

Home report

153 Chestnut Hill Drive, Winona Woods, Irondequoit, Monroe County, New York, United States, 14617



Total Area: 2190 sq. ft

Below Ground: 505 sq. ft, Floor 2: 982 sq. ft, Floor 3: 703 sq. ft

Excluded: Storage 122 sq. ft, Utility 135 sq. ft, Walls: 178 sq. ft

Property summary



3 Floors

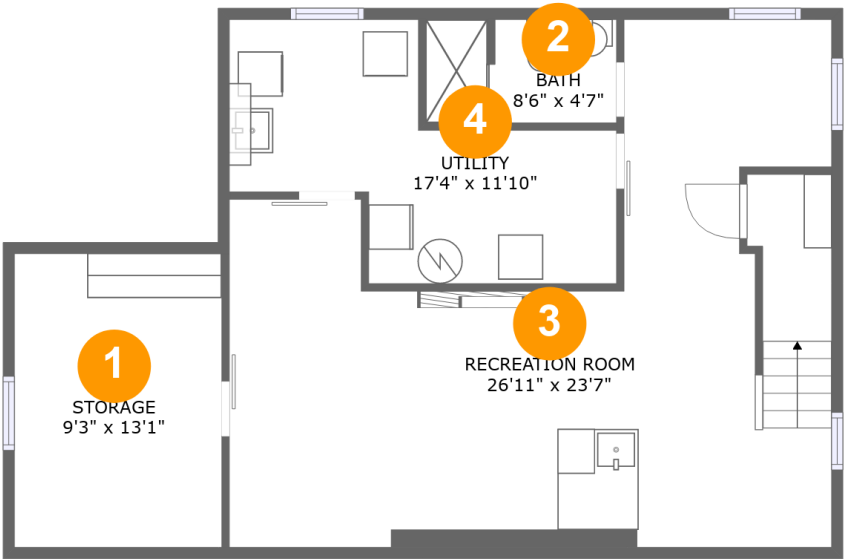


3 Bedrooms



2 Bathrooms

153 Chestnut Hill Drive, Winona Woods, Irondequoit, Monroe County, New York, United States, 14617



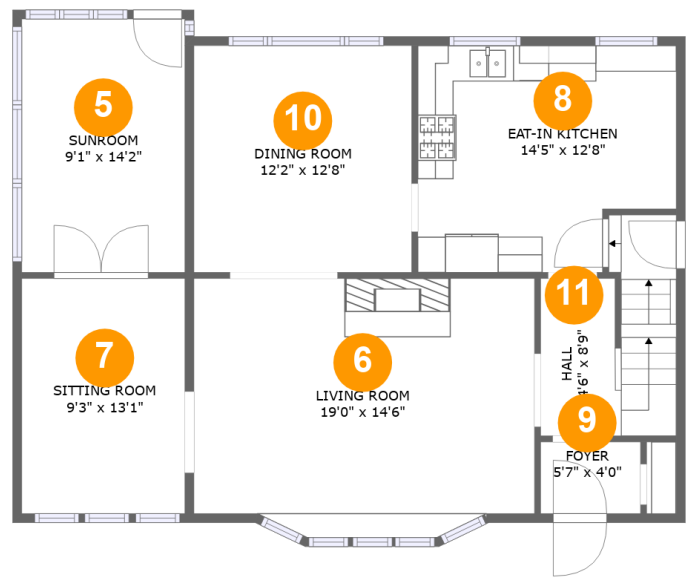
Room dimensions

Floor 1 Below ground Total:505sqft Excluded: 257sqft

#		Max Dimensions	sqft	Included
1	Storage	9'3" x 13'1"	122 sq. ft	No
2	Bath	8'6" x 4'7"	39 sq. ft	Yes
3	Recreation Room	26'11" x 23'7"	417 sq. ft	Yes
4	Utility	17'4" x 11'10"	135 sq. ft	No

Home report

153 Chestnut Hill Drive, Winona Woods, Irondequoit, Monroe County, New York, United States, 14617



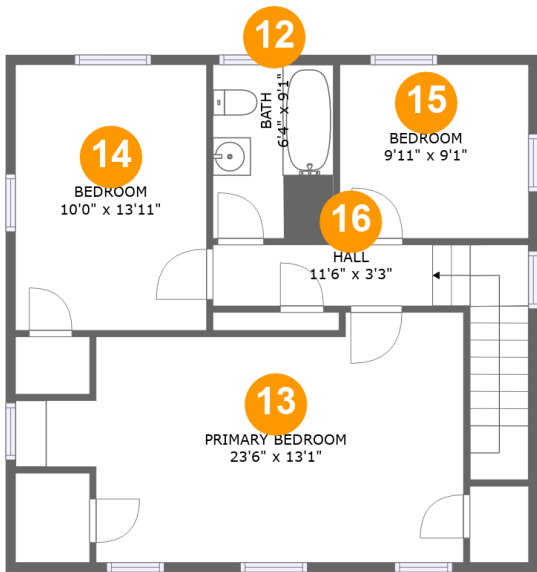
Room dimensions

Floor 2 Total:982sqft Excluded: 0sqft

#		Max Dimensions	sqft	Included
5	Sunroom	9'1" x 14'2"	129 sq. ft	Yes
6	Living Room	19'0" x 14'6"	263 sq. ft	Yes
7	Sitting Room	9'3" x 13'1"	122 sq. ft	Yes
8	Eat-in Kitchen	14'5" x 12'8"	168 sq. ft	Yes
9	Foyer	5'7" x 4'0"	22 sq. ft	Yes
10	Dining Room	12'2" x 12'8"	154 sq. ft	Yes
11	Hall	4'6" x 8'9"	78 sq. ft	Yes

Home report

153 Chestnut Hill Drive, Winona Woods, Irondequoit, Monroe County, New York, United States, 14617



Room dimensions

Floor 3 Total:703sqft Excluded: 0sqft

#		Max Dimensions	sqft	Included
12	Bath	6'4" x 9'1"	58 sq. ft	Yes
13	Primary Bedroom	23'6" x 13'1"	251 sq. ft	Yes
14	Bedroom	10'0" x 13'11"	140 sq. ft	Yes
15	Bedroom	9'11" x 9'1"	90 sq. ft	Yes
16	Hall	11'6" x 3'3"	81 sq. ft	Yes

153 Chestnut Hill Drive, Winona Woods, Irondequoit, Monroe County, New York, United States, 14617

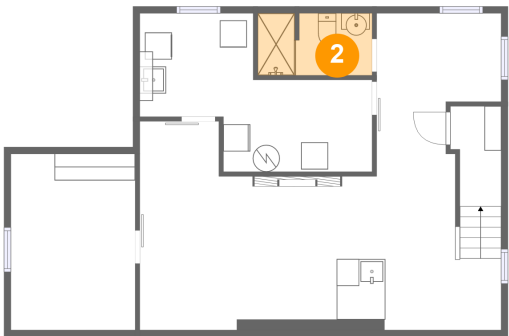
1 Floor 1 - Storage



Max Dimensions: 9'3" x 13'1"
Calculated Area: 122 sq. ft
Included: No

Heated: No
Finished: No
Enclosed: No
Contiguous: Yes
Permitted: Yes
Wet space: No
Addition: No
Conversion: No

2 Floor 1 - Bath

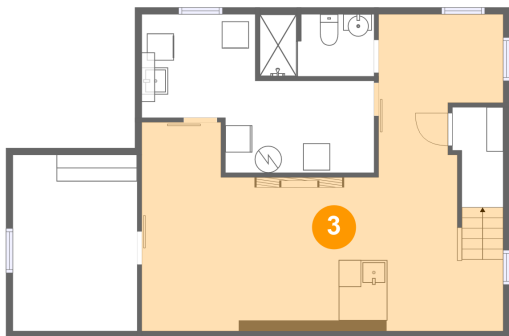


Max Dimensions: 8'6" x 4'7"
Calculated Area: 39 sq. ft
Included: Yes

Heated: Yes
Finished: Yes
Enclosed: Yes
Contiguous: Yes
Permitted: Yes
Wet space: Yes
Addition: No
Conversion: No

153 Chestnut Hill Drive, Winona Woods, Irondequoit, Monroe County, New York, United States, 14617

3 Floor 1 - Recreation Room



Max Dimensions: 26'11" x 23'7"
Calculated Area: 417 sq. ft
Included: Yes

Heated: Yes
Finished: Yes
Enclosed: Yes
Contiguous: Yes
Permitted: Yes
Wet space: No
Addition: No
Conversion: No

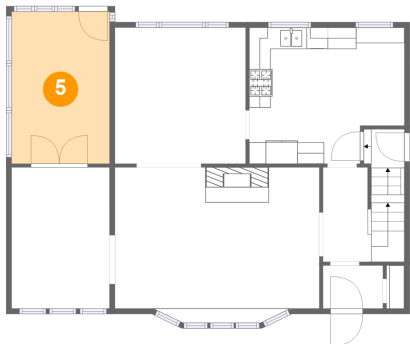
4 Floor 1 - Utility



Max Dimensions: 17'4" x 11'10"
Calculated Area: 135 sq. ft
Included: No

Heated: Yes
Finished: No
Enclosed: Yes
Contiguous: Yes
Permitted: Yes
Wet space: No
Addition: No
Conversion: No

5 Floor 2 - Sunroom

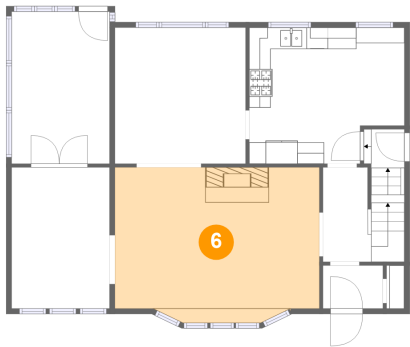


Max Dimensions: 9'1" x 14'2"
Calculated Area: 129 sq. ft
Included: Yes

Heated: Yes
Finished: Yes
Enclosed: Yes
Contiguous: Yes
Permitted: Yes
Wet space: No
Addition: No
Conversion: No

153 Chestnut Hill Drive, Winona Woods, Irondequoit, Monroe County, New York, United States, 14617

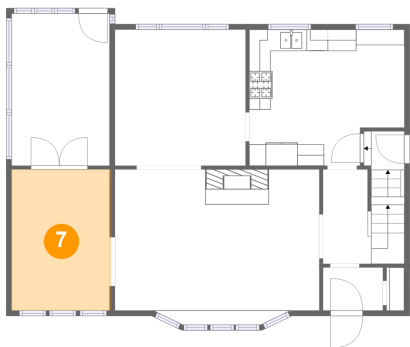
6 Floor 2 - Living Room



Max Dimensions: 19'0" x 14'6"
Calculated Area: 263 sq. ft
Included: Yes

Heated: Yes
Finished: Yes
Enclosed: Yes
Contiguous: Yes
Permitted: Yes
Wet space: No
Addition: No
Conversion: No

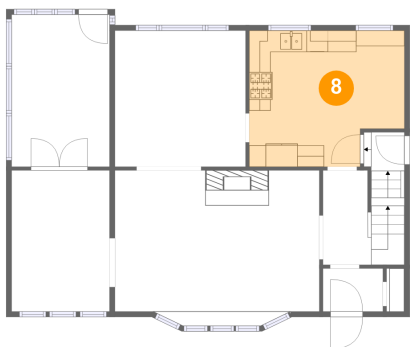
7 Floor 2 - Sitting Room



Max Dimensions: 9'3" x 13'1"
Calculated Area: 122 sq. ft
Included: Yes

Heated: Yes
Finished: Yes
Enclosed: Yes
Contiguous: Yes
Permitted: Yes
Wet space: No
Addition: No
Conversion: No

8 Floor 2 - Eat-in Kitchen



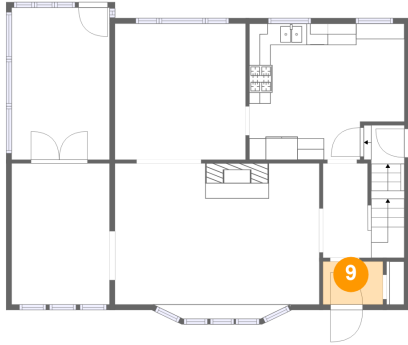
Max Dimensions: 14'5" x 12'8"
Calculated Area: 168 sq. ft
Included: Yes

Heated: Yes
Finished: Yes
Enclosed: Yes
Contiguous: Yes
Permitted: Yes
Wet space: No
Addition: No
Conversion: No

Home report

153 Chestnut Hill Drive, Winona Woods, Irondequoit, Monroe County, New York, United States, 14617

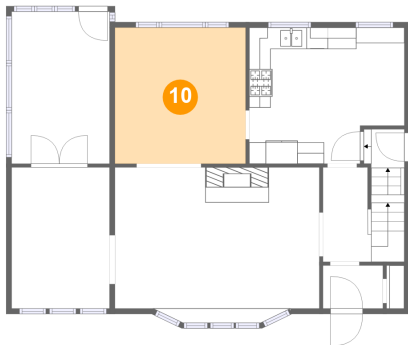
9 Floor 2 - Foyer



Max Dimensions: 5'7" x 4'0"
Calculated Area: 22 sq. ft
Included: Yes

Heated: Yes
Finished: Yes
Enclosed: Yes
Contiguous: Yes
Permitted: Yes
Wet space: No
Addition: No
Conversion: No

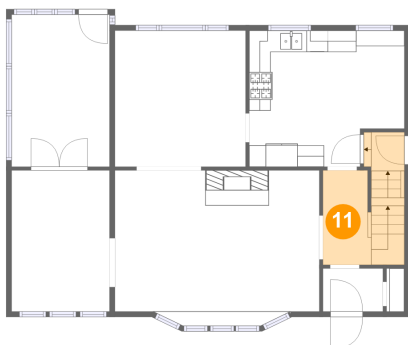
10 Floor 2 - Dining Room



Max Dimensions: 12'2" x 12'8"
Calculated Area: 154 sq. ft
Included: Yes

Heated: Yes
Finished: Yes
Enclosed: Yes
Contiguous: Yes
Permitted: Yes
Wet space: No
Addition: No
Conversion: No

11 Floor 2 - Hall

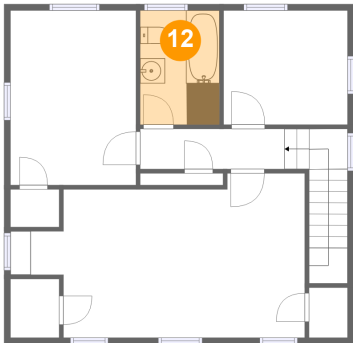


Max Dimensions: 4'6" x 8'9"
Calculated Area: 78 sq. ft
Included: Yes

Heated: Yes
Finished: Yes
Enclosed: Yes
Contiguous: Yes
Permitted: Yes
Wet space: No
Addition: No
Conversion: No

153 Chestnut Hill Drive, Winona Woods, Irondequoit, Monroe County, New York, United States, 14617

12 Floor 3 - Bath



Max Dimensions: 6'4" x 9'1"
Calculated Area: 58 sq. ft
Included: Yes

Heated: Yes
Finished: Yes
Enclosed: Yes
Contiguous: Yes
Permitted: Yes
Wet space: Yes
Addition: No
Conversion: No

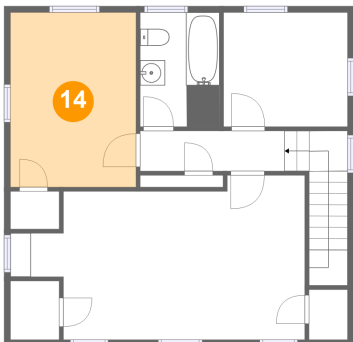
13 Floor 3 - Primary Bedroom



Max Dimensions: 23'6" x 13'1"
Calculated Area: 251 sq. ft
Included: Yes

Heated: Yes
Finished: Yes
Enclosed: Yes
Contiguous: Yes
Permitted: Yes
Wet space: No
Addition: No
Conversion: No

14 Floor 3 - Bedroom

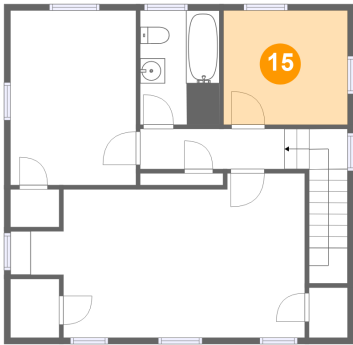


Max Dimensions: 10'0" x 13'11"
Calculated Area: 140 sq. ft
Included: Yes

Heated: Yes
Finished: Yes
Enclosed: Yes
Contiguous: Yes
Permitted: Yes
Wet space: No
Addition: No
Conversion: No

153 Chestnut Hill Drive, Winona Woods, Irondequoit, Monroe County, New York, United States, 14617

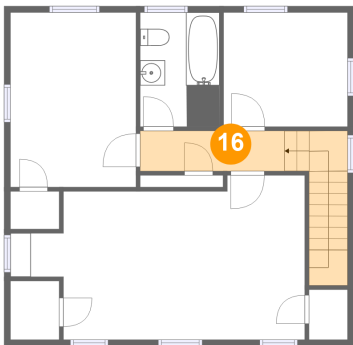
15 Floor 3 - Bedroom



Max Dimensions: 9'11" x 9'1"
Calculated Area: 90 sq. ft
Included: Yes

Heated: Yes
Finished: Yes
Enclosed: Yes
Contiguous: Yes
Permitted: Yes
Wet space: No
Addition: No
Conversion: No

16 Floor 3 - Hall



Max Dimensions: 11'6" x 3'3"
Calculated Area: 81 sq. ft
Included: Yes

Heated: Yes
Finished: Yes
Enclosed: Yes
Contiguous: Yes
Permitted: Yes
Wet space: No
Addition: No
Conversion: No