

Home report

2307 Lochview Street, Sterling, Pineville, Mecklenburg County,  
North Carolina, United States, 28134



**Total GLA: 3553 sq. ft**  
Floor 1: 1489 sq. ft, Floor 2: 1443 sq. ft, Floor 3: 621 sq. ft  
Excluded: Screened porch 278 sq. ft, Porch 212 sq. ft, Deck 44 sq. ft

Property summary

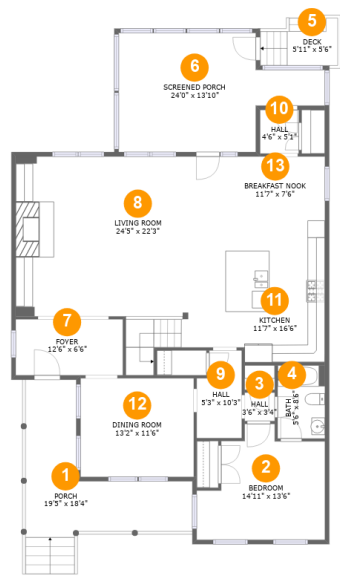
 **3** Floors

 **4** Bedrooms

 **5** Bathrooms

Home report

2307 Lochview Street, Sterling, Pineville, Mecklenburg County,  
North Carolina, United States, 28134



Room dimensions

Floor 1 Total:1489sqft    Excluded: 534sqft

#		Max Dimensions	sqft	Included
1	Porch	19'5" x 18'4"	212 sq. ft	No
2	Bedroom	14'11" x 13'6"	162 sq. ft	Yes
3	Hall	3'6" x 3'4"	12 sq. ft	Yes
4	Bath	5'6" x 8'6"	47 sq. ft	Yes
5	Deck	5'11" x 5'6"	44 sq. ft	No
6	Screened Porch	24'0" x 13'10"	255 sq. ft	No
7	Foyer	12'6" x 6'6"	81 sq. ft	Yes
8	Living Room	24'5" x 22'3"	507 sq. ft	Yes
9	Hall	5'3" x 10'3"	49 sq. ft	Yes
10	Hall	4'6" x 5'1"	23 sq. ft	Yes
11	Kitchen	11'7" x 16'6"	187 sq. ft	Yes

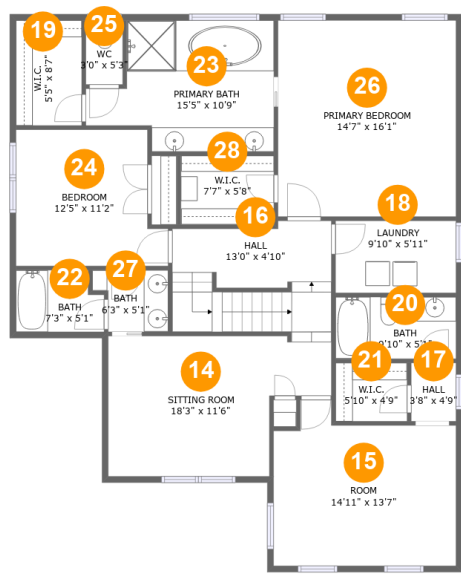
Home report

2307 Lochview Street, Sterling, Pineville, Mecklenburg County,  
North Carolina, United States, 28134

#		Max Dimensions	sqft	Included
12	Dining Room	13'2" x 11'6"	151 sq. ft	Yes
13	Breakfast Nook	11'7" x 7'6"	86 sq. ft	Yes

Home report

2307 Lochview Street, Sterling, Pineville, Mecklenburg County,  
North Carolina, United States, 28134



Room dimensions

Floor 2 Total:1443sqft   Excluded: 0sqft

#		Max Dimensions	sqft	Included
14	Sitting Room	18'3" x 11'6"	177 sq. ft	Yes
15	Room	14'11" x 13'7"	176 sq. ft	Yes
16	Hall	13'0" x 4'10"	113 sq. ft	Yes
17	Hall	3'8" x 4'9"	18 sq. ft	Yes
18	Laundry	9'10" x 5'11"	58 sq. ft	Yes
19	W.I.C.	5'5" x 8'7"	46 sq. ft	Yes
20	Bath	9'10" x 5'1"	50 sq. ft	Yes
21	W.I.C.	5'10" x 4'9"	28 sq. ft	Yes
22	Bath	7'3" x 5'1"	34 sq. ft	Yes
23	Primary Bath	15'5" x 10'9"	135 sq. ft	Yes
24	Bedroom	12'5" x 11'2"	125 sq. ft	Yes

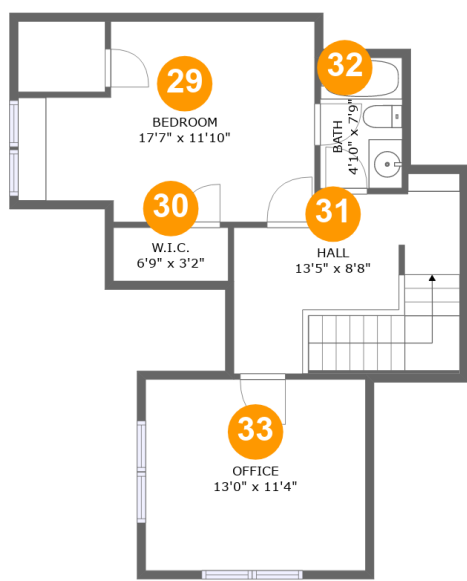
Home report

2307 Lochview Street, Sterling, Pineville, Mecklenburg County,  
North Carolina, United States, 28134

#		Max Dimensions	sqft	Included
25	WC	3'0" x 5'3"	16 sq. ft	Yes
26	Primary Bedroom	14'7" x 16'1"	234 sq. ft	Yes
27	Bath	6'3" x 5'1"	27 sq. ft	Yes
28	W.I.C.	7'7" x 5'8"	43 sq. ft	Yes

Home report

2307 Lochview Street, Sterling, Pineville, Mecklenburg County,  
North Carolina, United States, 28134



Room dimensions

Floor 3 Total:621sqft Excluded: 0sqft

#		Max Dimensions	sqft	Included
29	Bedroom	17'7" x 11'10"	176 sq. ft	Yes
30	W.I.C.	6'9" x 3'2"	21 sq. ft	Yes
31	Hall	13'5" x 8'8"	136 sq. ft	Yes
32	Bath	4'10" x 7'9"	38 sq. ft	Yes
33	Office	13'0" x 11'4"	147 sq. ft	Yes

1 Floor 1 - Porch



Max Dimensions: 19'5" x 18'4"  
Calculated Area: 212 sq. ft  
Included: No

Heated: No  
Finished: Yes  
Enclosed: No  
Contiguous: Yes  
Permitted: Yes  
Wet space: No  
Addition: No  
Conversion: No

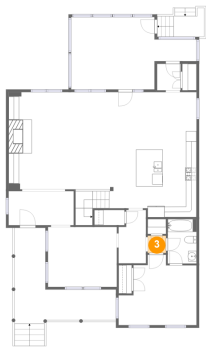
2 Floor 1 - Bedroom



Max Dimensions: 14'11" x 13'6"  
Calculated Area: 162 sq. ft  
Included: Yes

Heated: Yes  
Finished: Yes  
Enclosed: Yes  
Contiguous: Yes  
Permitted: Yes  
Wet space: No  
Addition: No  
Conversion: No

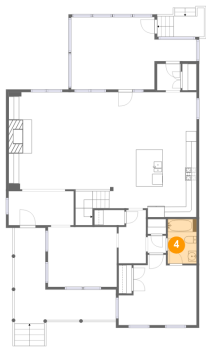
3 Floor 1 - Hall



Max Dimensions: 3'6" x 3'4"  
Calculated Area: 12 sq. ft  
Included: Yes

Heated: Yes  
Finished: Yes  
Enclosed: Yes  
Contiguous: Yes  
Permitted: Yes  
Wet space: No  
Addition: No  
Conversion: No

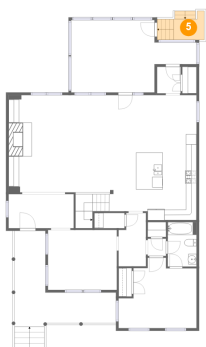
4 Floor 1 - Bath



Max Dimensions: 5'6" x 8'6"  
Calculated Area: 47 sq. ft  
Included: Yes

Heated: Yes  
Finished: Yes  
Enclosed: Yes  
Contiguous: Yes  
Permitted: Yes  
Wet space: Yes  
Addition: No  
Conversion: No

5 Floor 1 - Deck



Max Dimensions: 5'11" x 5'6"  
Calculated Area: 44 sq. ft  
Included: No

Heated: No  
Finished: Yes  
Enclosed: No  
Contiguous: Yes  
Permitted: Yes  
Wet space: No  
Addition: No  
Conversion: No



2307 Lochview Street, Sterling, Pineville, Mecklenburg County,  
North Carolina, United States, 28134

6 Floor 1 - Screened Porch



Max Dimensions: 24'0" x 13'10"  
Calculated Area: 255 sq. ft  
Included: No

Heated: No  
Finished: Yes  
Enclosed: No  
Contiguous: Yes  
Permitted: Yes  
Wet space: No  
Addition: No  
Conversion: No

7 Floor 1 - Foyer



Max Dimensions: 12'6" x 6'6"  
Calculated Area: 81 sq. ft  
Included: Yes

Heated: Yes  
Finished: Yes  
Enclosed: Yes  
Contiguous: Yes  
Permitted: Yes  
Wet space: No  
Addition: No  
Conversion: No

8 Floor 1 - Living Room



Max Dimensions: 24'5" x 22'3"  
Calculated Area: 507 sq. ft  
Included: Yes

Heated: Yes  
Finished: Yes  
Enclosed: Yes  
Contiguous: Yes  
Permitted: Yes  
Wet space: No  
Addition: No  
Conversion: No

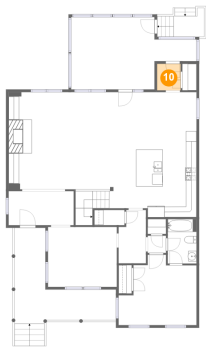
9 Floor 1 - Hall



Max Dimensions: 5'3" x 10'3"  
Calculated Area: 49 sq. ft  
Included: Yes

Heated: Yes  
Finished: Yes  
Enclosed: Yes  
Contiguous: Yes  
Permitted: Yes  
Wet space: No  
Addition: No  
Conversion: No

10 Floor 1 - Hall



Max Dimensions: 4'6" x 5'1"  
Calculated Area: 23 sq. ft  
Included: Yes

Heated: Yes  
Finished: Yes  
Enclosed: Yes  
Contiguous: Yes  
Permitted: Yes  
Wet space: No  
Addition: No  
Conversion: No

11 Floor 1 - Kitchen



Max Dimensions: 11'7" x 16'6"  
Calculated Area: 187 sq. ft  
Included: Yes

Heated: Yes  
Finished: Yes  
Enclosed: Yes  
Contiguous: Yes  
Permitted: Yes  
Wet space: No  
Addition: No  
Conversion: No

12 Floor 1 - Dining Room



Max Dimensions: 13'2" x 11'6"  
Calculated Area: 151 sq. ft  
Included: Yes

Heated: Yes  
Finished: Yes  
Enclosed: Yes  
Contiguous: Yes  
Permitted: Yes  
Wet space: No  
Addition: No  
Conversion: No

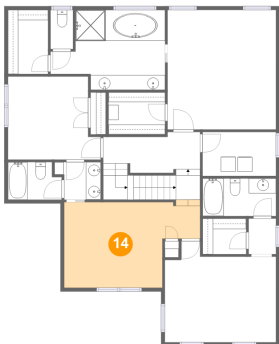
13 Floor 1 - Breakfast Nook



Max Dimensions: 11'7" x 7'6"  
Calculated Area: 86 sq. ft  
Included: Yes

Heated: Yes  
Finished: Yes  
Enclosed: Yes  
Contiguous: Yes  
Permitted: Yes  
Wet space: No  
Addition: No  
Conversion: No

14 Floor 2 - Sitting Room



Max Dimensions: 18'3" x 11'6"  
Calculated Area: 177 sq. ft  
Included: Yes

Heated: Yes  
Finished: Yes  
Enclosed: Yes  
Contiguous: Yes  
Permitted: Yes  
Wet space: No  
Addition: No  
Conversion: No

2307 Lochview Street, Sterling, Pineville, Mecklenburg County,  
North Carolina, United States, 28134

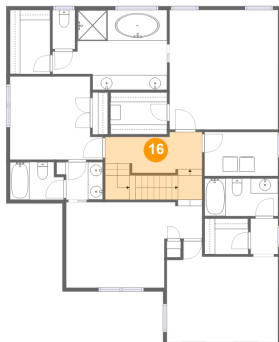
## 15 Floor 2 - Room



Max Dimensions: 14'11" x 13'7"  
Calculated Area: 176 sq. ft  
Included: Yes

Heated: Yes  
Finished: Yes  
Enclosed: Yes  
Contiguous: Yes  
Permitted: Yes  
Wet space: No  
Addition: No  
Conversion: No

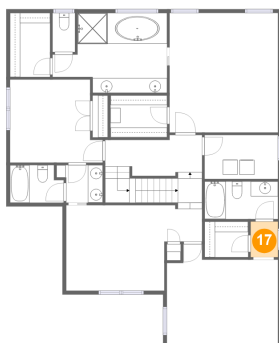
## 16 Floor 2 - Hall



Max Dimensions: 13'0" x 4'10"  
Calculated Area: 113 sq. ft  
Included: Yes

Heated: Yes  
Finished: Yes  
Enclosed: Yes  
Contiguous: Yes  
Permitted: Yes  
Wet space: No  
Addition: No  
Conversion: No

## 17 Floor 2 - Hall



Max Dimensions: 3'8" x 4'9"  
Calculated Area: 18 sq. ft  
Included: Yes

Heated: Yes  
Finished: Yes  
Enclosed: Yes  
Contiguous: Yes  
Permitted: Yes  
Wet space: No  
Addition: No  
Conversion: No

18 Floor 2 - Laundry



Max Dimensions: 9'10" x 5'11"  
Calculated Area: 58 sq. ft  
Included: Yes

Heated: Yes  
Finished: Yes  
Enclosed: Yes  
Contiguous: Yes  
Permitted: Yes  
Wet space: No  
Addition: No  
Conversion: No

19 Floor 2 - W.I.C.



Max Dimensions: 5'5" x 8'7"  
Calculated Area: 46 sq. ft  
Included: Yes

Heated: Yes  
Finished: Yes  
Enclosed: Yes  
Contiguous: Yes  
Permitted: Yes  
Wet space: No  
Addition: No  
Conversion: No

20 Floor 2 - Bath



Max Dimensions: 9'10" x 5'1"  
Calculated Area: 50 sq. ft  
Included: Yes

Heated: Yes  
Finished: Yes  
Enclosed: Yes  
Contiguous: Yes  
Permitted: Yes  
Wet space: Yes  
Addition: No  
Conversion: No

21 Floor 2 - W.I.C.



Max Dimensions: 5'10" x 4'9"  
Calculated Area: 28 sq. ft  
Included: Yes

Heated: Yes  
Finished: Yes  
Enclosed: Yes  
Contiguous: Yes  
Permitted: Yes  
Wet space: No  
Addition: No  
Conversion: No

22 Floor 2 - Bath



Max Dimensions: 7'3" x 5'1"  
Calculated Area: 34 sq. ft  
Included: Yes

Heated: Yes  
Finished: Yes  
Enclosed: Yes  
Contiguous: Yes  
Permitted: Yes  
Wet space: Yes  
Addition: No  
Conversion: No

23 Floor 2 - Primary Bath



Max Dimensions: 15'5" x 10'9"  
Calculated Area: 135 sq. ft  
Included: Yes

Heated: Yes  
Finished: Yes  
Enclosed: Yes  
Contiguous: Yes  
Permitted: Yes  
Wet space: Yes  
Addition: No  
Conversion: No

24 Floor 2 - Bedroom



Max Dimensions: 12'5" x 11'2"  
Calculated Area: 125 sq. ft  
Included: Yes

Heated: Yes  
Finished: Yes  
Enclosed: Yes  
Contiguous: Yes  
Permitted: Yes  
Wet space: No  
Addition: No  
Conversion: No

25 Floor 2 - WC



Max Dimensions: 3'0" x 5'3"  
Calculated Area: 16 sq. ft  
Included: Yes

Heated: Yes  
Finished: Yes  
Enclosed: Yes  
Contiguous: Yes  
Permitted: Yes  
Wet space: Yes  
Addition: No  
Conversion: No

26 Floor 2 - Primary Bedroom



Max Dimensions: 14'7" x 16'1"  
Calculated Area: 234 sq. ft  
Included: Yes

Heated: Yes  
Finished: Yes  
Enclosed: Yes  
Contiguous: Yes  
Permitted: Yes  
Wet space: No  
Addition: No  
Conversion: No

27 Floor 2 - Bath



Max Dimensions: 6'3" x 5'1"  
Calculated Area: 27 sq. ft  
Included: Yes

Heated: Yes  
Finished: Yes  
Enclosed: Yes  
Contiguous: Yes  
Permitted: Yes  
Wet space: Yes  
Addition: No  
Conversion: No

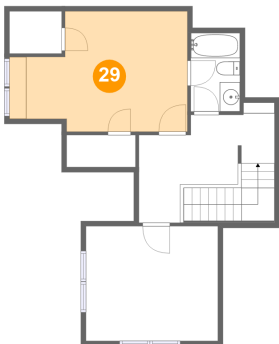
28 Floor 2 - W.I.C.



Max Dimensions: 7'7" x 5'8"  
Calculated Area: 43 sq. ft  
Included: Yes

Heated: Yes  
Finished: Yes  
Enclosed: Yes  
Contiguous: Yes  
Permitted: Yes  
Wet space: No  
Addition: No  
Conversion: No

29 Floor 3 - Bedroom

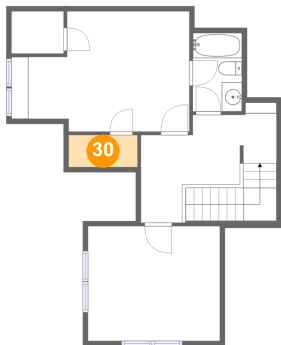


Max Dimensions: 17'7" x 11'10"  
Calculated Area: 176 sq. ft  
Included: Yes

Heated: Yes  
Finished: Yes  
Enclosed: Yes  
Contiguous: Yes  
Permitted: Yes  
Wet space: No  
Addition: No  
Conversion: No



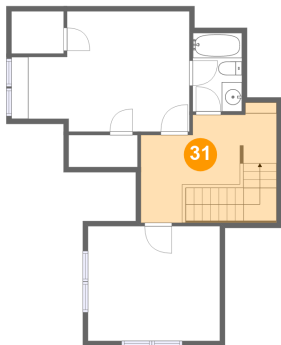
30 Floor 3 - W.I.C.



Max Dimensions: 6'9" x 3'2"  
Calculated Area: 21 sq. ft  
Included: Yes

Heated: Yes  
Finished: Yes  
Enclosed: Yes  
Contiguous: Yes  
Permitted: Yes  
Wet space: No  
Addition: No  
Conversion: No

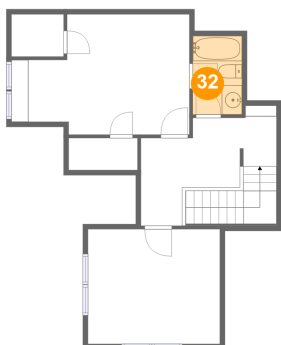
31 Floor 3 - Hall



Max Dimensions: 13'5" x 8'8"  
Calculated Area: 136 sq. ft  
Included: Yes

Heated: Yes  
Finished: Yes  
Enclosed: Yes  
Contiguous: Yes  
Permitted: Yes  
Wet space: No  
Addition: No  
Conversion: No

32 Floor 3 - Bath

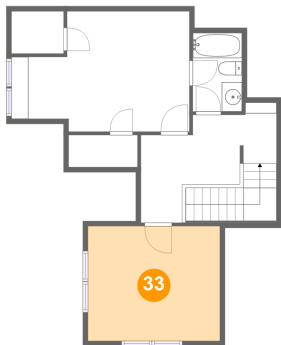


Max Dimensions: 4'10" x 7'9"  
Calculated Area: 38 sq. ft  
Included: Yes

Heated: Yes  
Finished: Yes  
Enclosed: Yes  
Contiguous: Yes  
Permitted: Yes  
Wet space: Yes  
Addition: No  
Conversion: No

2307 Lochview Street, Sterling, Pineville, Mecklenburg County,  
North Carolina, United States, 28134

**33** Floor 3 - Office



Max Dimensions: 13'0" x 11'4"  
Calculated Area: 147 sq. ft  
Included: Yes

Heated: Yes  
Finished: Yes  
Enclosed: Yes  
Contiguous: Yes  
Permitted: Yes  
Wet space: No  
Addition: No  
Conversion: No