



Home report


36 Dufferin Road, Lindenlea, New Edinburgh, Ottawa, Ontario, Canada, K1M 2A8





Property summary


 **1** Garages


 **3** Bedrooms

 **2** Bathrooms

 **2** Half baths

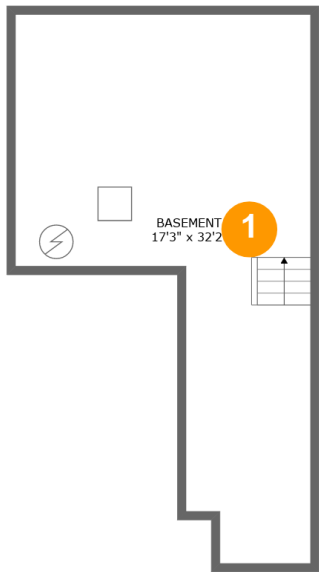
 **5** Floors

 **1,994** Gross living area sqft

 **2,988** Total sqft

Home report

36 Dufferin Road, Lindenlea, New Edinburgh, Ottawa, Ontario,
Canada, K1M 2A8



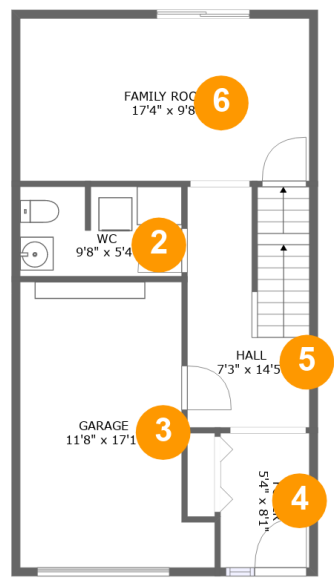
Room dimensions

Floor 1 Total sqft: 416 Living area: 0

#		Dimensions	sqft	Counted as living area
1	Basement	17'3" x 32'2"	377 sq. ft	No

Home report

36 Dufferin Road, Lindenlea, New Edinburgh, Ottawa, Ontario,
Canada, K1M 2A8



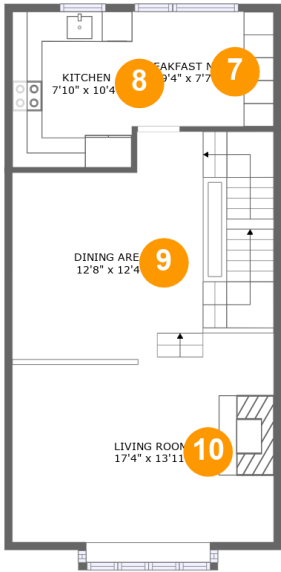
Room dimensions

Floor 2 Total sqft: 604 Living area: 423

#		Dimensions	sqft	Counted as living area
2	WC	9'8" x 5'4"	51 sq. ft	Yes
3	Garage	11'8" x 17'1"	171 sq. ft	No
4	Foyer	5'4" x 8'1"	43 sq. ft	Yes
5	Hall	7'3" x 14'5"	103 sq. ft	Yes
6	Family Room	17'4" x 9'8"	169 sq. ft	Yes

Home report

36 Dufferin Road, Lindenlea, New Edinburgh, Ottawa, Ontario, Canada, K1M 2A8



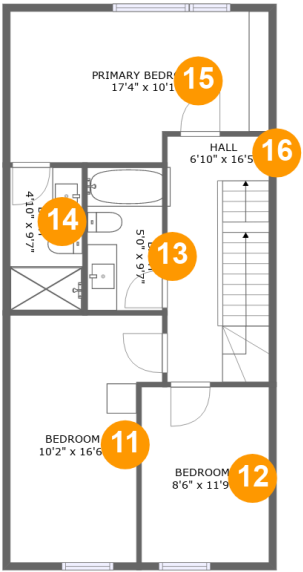
Room dimensions

Floor 3 Total sqft: 657 Living area: 657

#		Dimensions	sqft	Counted as living area
7	Breakfast Nook	9'4" x 7'7"	72 sq. ft	Yes
8	Kitchen	7'10" x 10'4"	82 sq. ft	Yes
9	Dining Area	12'8" x 12'4"	230 sq. ft	Yes
10	Living Room	17'4" x 13'11"	231 sq. ft	Yes

Home report

36 Dufferin Road, Lindenlea, New Edinburgh, Ottawa, Ontario, Canada, K1M 2A8



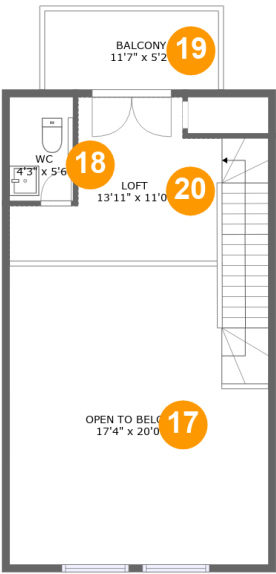
Room dimensions

Floor 4 Total sqft: 675 Living area: 675

#		Dimensions	sqft	Counted as living area
11	Bedroom	10'2" x 16'6"	148 sq. ft	Yes
12	Bedroom	8'6" x 11'9"	100 sq. ft	Yes
13	Bath	5'0" x 9'7"	48 sq. ft	Yes
14	Bath	4'10" x 9'7"	46 sq. ft	Yes
15	Primary Bedroom	17'4" x 10'1"	160 sq. ft	Yes
16	Hall	6'10" x 16'5"	112 sq. ft	Yes

Home report

36 Dufferin Road, Lindenlea, New Edinburgh, Ottawa, Ontario,
Canada, K1M 2A8



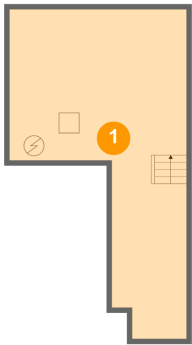
Room dimensions

Floor 5 Total sqft: 636 Living area: 239

#		Dimensions	sqft	Counted as living area
17	Open To Below	17'4" x 20'0"	319 sq. ft	No
18	WC	4'3" x 5'6"	29 sq. ft	Yes
19	Balcony	11'7" x 5'2"	61 sq. ft	No
20	Loft	13'11" x 11'0"	174 sq. ft	Yes

36 Dufferin Road, Lindenlea, New Edinburgh, Ottawa, Ontario,
Canada, K1M 2A8

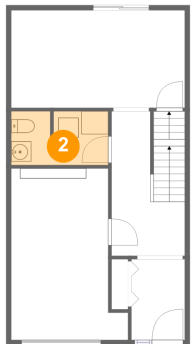
1 Floor 1 - Basement



Dimensions: 17'3" x 32'2"
Area: 377 sq. ft
Counted as living area: No

Heated: Yes
Finished: No
Enclosed: Yes
Contiguous: Yes
Permitted: Yes
Wet space: No
Addition: No
Conversion: No

2 Floor 2 - WC

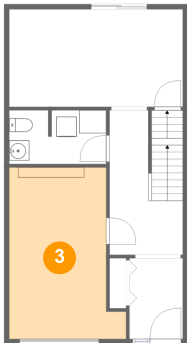


Dimensions: 9'8" x 5'4"
Area: 51 sq. ft
Counted as living area: Yes

Heated: Yes
Finished: Yes
Enclosed: Yes
Contiguous: Yes
Permitted: Yes
Wet space: Yes
Addition: No
Conversion: No

36 Dufferin Road, Lindenlea, New Edinburgh, Ottawa, Ontario,
Canada, K1M 2A8

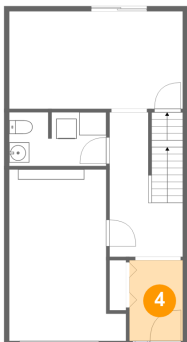
3 Floor 2 - Garage



Dimensions: 11'8" x 17'1"
Area: 171 sq. ft
Counted as living area: No

Heated: No
Finished: No
Enclosed: Yes
Contiguous: Yes
Permitted: Yes
Wet space: No
Addition: No
Conversion: No

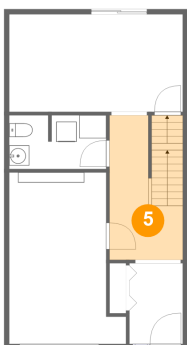
4 Floor 2 - Foyer



Dimensions: 5'4" x 8'1"
Area: 43 sq. ft
Counted as living area: Yes

Heated: Yes
Finished: Yes
Enclosed: Yes
Contiguous: Yes
Permitted: Yes
Wet space: No
Addition: No
Conversion: No

5 Floor 2 - Hall

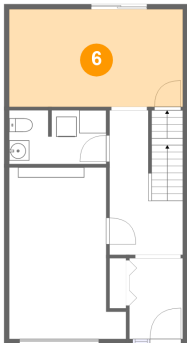


Dimensions: 7'3" x 14'5"
Area: 103 sq. ft
Counted as living area: Yes

Heated: Yes
Finished: Yes
Enclosed: Yes
Contiguous: Yes
Permitted: Yes
Wet space: No
Addition: No
Conversion: No

36 Dufferin Road, Lindenlea, New Edinburgh, Ottawa, Ontario,
Canada, K1M 2A8

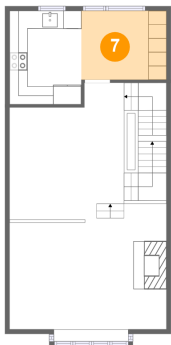
6 Floor 2 - Family Room



Dimensions: 17'4" x 9'8"
Area: 169 sq. ft
Counted as living area: Yes

Heated: Yes
Finished: Yes
Enclosed: Yes
Contiguous: Yes
Permitted: Yes
Wet space: No
Addition: No
Conversion: No

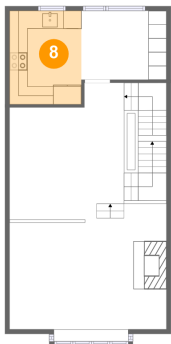
7 Floor 3 - Breakfast Nook



Dimensions: 9'4" x 7'7"
Area: 72 sq. ft
Counted as living area: Yes

Heated: Yes
Finished: Yes
Enclosed: Yes
Contiguous: Yes
Permitted: Yes
Wet space: No
Addition: No
Conversion: No

8 Floor 3 - Kitchen



Dimensions: 7'10" x 10'4"
Area: 82 sq. ft
Counted as living area: Yes

Heated: Yes
Finished: Yes
Enclosed: Yes
Contiguous: Yes
Permitted: Yes
Wet space: No
Addition: No
Conversion: No

36 Dufferin Road, Lindenlea, New Edinburgh, Ottawa, Ontario,
Canada, K1M 2A8

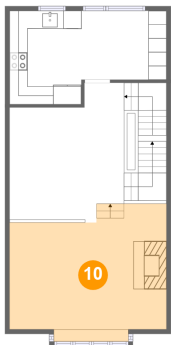
9 Floor 3 - Dining Area



Dimensions: 12'8" x 12'4"
Area: 230 sq. ft
Counted as living area: Yes

Heated: Yes
Finished: Yes
Enclosed: Yes
Contiguous: Yes
Permitted: Yes
Wet space: No
Addition: No
Conversion: No

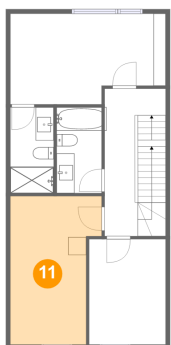
10 Floor 3 - Living Room



Dimensions: 17'4" x 13'11"
Area: 231 sq. ft
Counted as living area: Yes

Heated: Yes
Finished: Yes
Enclosed: Yes
Contiguous: Yes
Permitted: Yes
Wet space: No
Addition: No
Conversion: No

11 Floor 4 - Bedroom

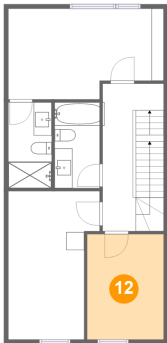


Dimensions: 10'2" x 16'6"
Area: 148 sq. ft
Counted as living area: Yes

Heated: Yes
Finished: Yes
Enclosed: Yes
Contiguous: Yes
Permitted: Yes
Wet space: No
Addition: No
Conversion: No

36 Dufferin Road, Lindenlea, New Edinburgh, Ottawa, Ontario,
Canada, K1M 2A8

12 Floor 4 - Bedroom



Dimensions: 8'6" x 11'9"
Area: 100 sq. ft
Counted as living area: Yes

Heated: Yes
Finished: Yes
Enclosed: Yes
Contiguous: Yes
Permitted: Yes
Wet space: No
Addition: No
Conversion: No

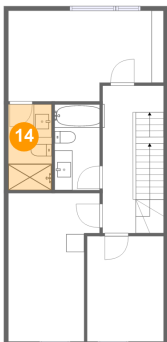
13 Floor 4 - Bath



Dimensions: 5'0" x 9'7"
Area: 48 sq. ft
Counted as living area: Yes

Heated: Yes
Finished: Yes
Enclosed: Yes
Contiguous: Yes
Permitted: Yes
Wet space: Yes
Addition: No
Conversion: No

14 Floor 4 - Bath

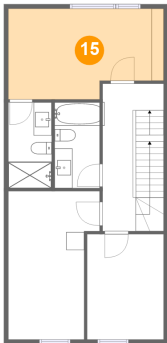


Dimensions: 4'10" x 9'7"
Area: 46 sq. ft
Counted as living area: Yes

Heated: Yes
Finished: Yes
Enclosed: Yes
Contiguous: Yes
Permitted: Yes
Wet space: Yes
Addition: No
Conversion: No

36 Dufferin Road, Lindenlea, New Edinburgh, Ottawa, Ontario,
Canada, K1M 2A8

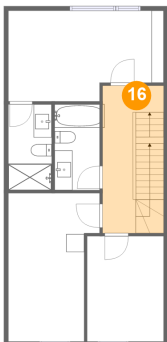
15 Floor 4 - Primary Bedroom



Dimensions: 17'4" x 10'1"
Area: 160 sq. ft
Counted as living area: Yes

Heated: Yes
Finished: Yes
Enclosed: Yes
Contiguous: Yes
Permitted: Yes
Wet space: No
Addition: No
Conversion: No

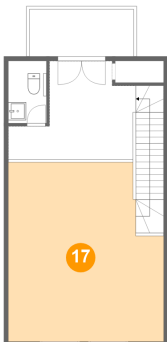
16 Floor 4 - Hall



Dimensions: 6'10" x 16'5"
Area: 112 sq. ft
Counted as living area: Yes

Heated: Yes
Finished: Yes
Enclosed: Yes
Contiguous: Yes
Permitted: Yes
Wet space: No
Addition: No
Conversion: No

17 Floor 5 - Open To Below

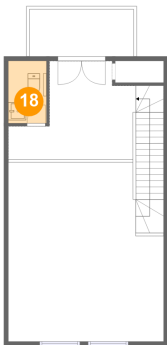


Dimensions: 17'4" x 20'0"
Area: 319 sq. ft
Counted as living area: No

Heated: No
Finished: No
Enclosed: No
Contiguous: Yes
Permitted: No
Wet space: No
Addition: No
Conversion: No

36 Dufferin Road, Lindenlea, New Edinburgh, Ottawa, Ontario,
Canada, K1M 2A8

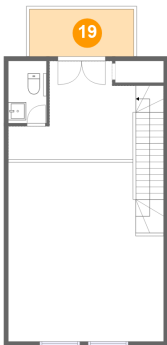
18 Floor 5 - WC



Dimensions: 4'3" x 5'6"
Area: 29 sq. ft
Counted as living area: Yes

Heated: Yes
Finished: Yes
Enclosed: Yes
Contiguous: Yes
Permitted: Yes
Wet space: Yes
Addition: No
Conversion: No

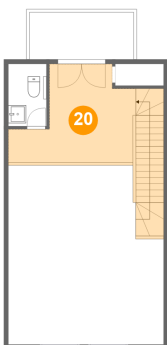
19 Floor 5 - Balcony



Dimensions: 11'7" x 5'2"
Area: 61 sq. ft
Counted as living area: No

Heated: No
Finished: Yes
Enclosed: No
Contiguous: Yes
Permitted: Yes
Wet space: No
Addition: No
Conversion: No

20 Floor 5 - Loft



Dimensions: 13'11" x 11'0"
Area: 174 sq. ft
Counted as living area: Yes

Heated: Yes
Finished: Yes
Enclosed: Yes
Contiguous: Yes
Permitted: Yes
Wet space: No
Addition: No
Conversion: No