


Home data report

2358 Upper Cow Creek Rd,Azalea,OR,US



Total Area: 1670 sq. ft
Floor 1: 0 sq. ft, Floor 2: 1670 sq. ft
Excluded: Garage 677 sq. ft, Porch 526 sq. ft, Walls: 144 sq. ft

Property summary

 **2** Floors

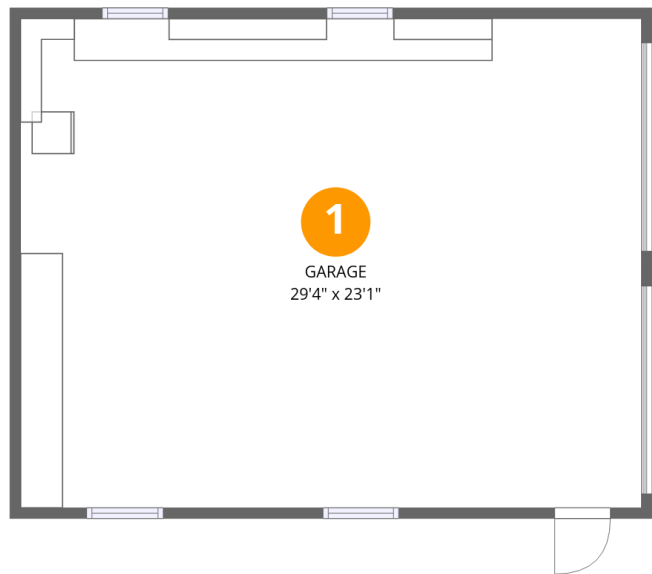
 **4** Bedrooms

 **2** Bathrooms

 **1** Garages

Home data report

2358 Upper Cow Creek Rd,Azalea,OR,US



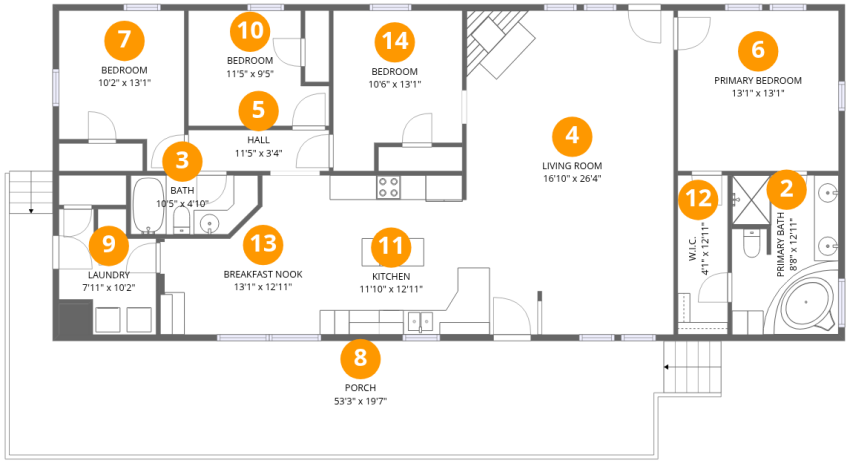
Room dimensions

Floor 1 Total:0sqft Excluded: 677sqft

#		Dimensions	sqft	Counted as living area
1	Garage	29'4" x 23'1"	677 sq. ft	No

Home data report

2358 Upper Cow Creek Rd,Azalea,OR,US



Room dimensions

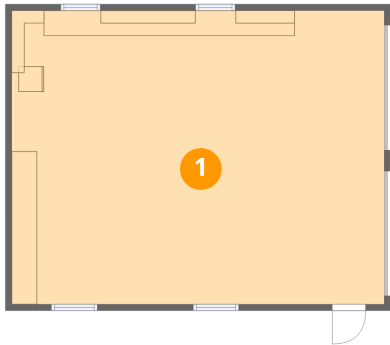
Floor 2 Total:1670sqft Excluded: 526sqft

#		Dimensions	sqft	Counted as living area
2	Primary Bath	8'8" x 12'11"	111 sq. ft	Yes
3	Bath	10'5" x 4'10"	47 sq. ft	Yes
4	Living Room	16'10" x 26'4"	444 sq. ft	Yes
5	Hall	11'5" x 3'4"	38 sq. ft	Yes
6	Primary Bedroom	13'1" x 13'1"	171 sq. ft	Yes
7	Bedroom	10'2" x 13'1"	115 sq. ft	Yes
8	Porch	53'3" x 19'7"	526 sq. ft	No
9	Laundry	7'11" x 10'2"	61 sq. ft	Yes
10	Bedroom	11'5" x 9'5"	93 sq. ft	Yes
11	Kitchen	11'10" x 12'11"	153 sq. ft	Yes
12	W.I.C.	4'1" x 12'11"	53 sq. ft	Yes

2358 Upper Cow Creek Rd,Azalea,OR,US

#		Dimensions	sqft	Counted as living area
13	Breakfast Nook	13'1" x 12'11"	130 sq. ft	Yes
14	Bedroom	10'6" x 13'1"	121 sq. ft	Yes

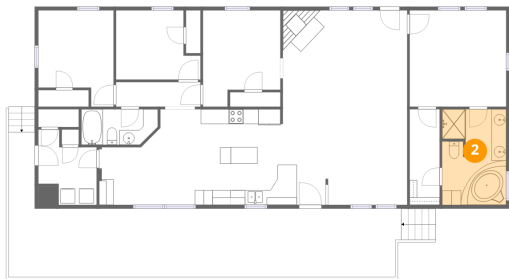
1 Floor 1 - Garage



Dimensions: 29'4" x 23'1"
Area: 677 sq. ft
Counted as living area: No

Heated: No
Finished: No
Enclosed: Yes
Contiguous: Yes
Permitted: Yes
Wet space: No
Addition: No
Conversion: No

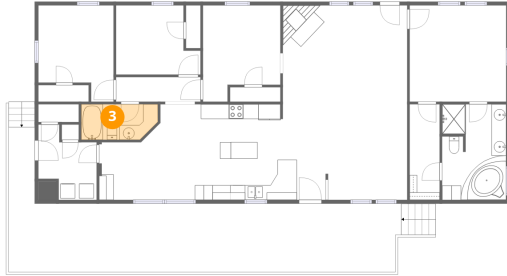
2 Floor 2 - Primary Bath



Dimensions: 8'8" x 12'11"
Area: 111 sq. ft
Counted as living area: Yes

Heated: Yes
Finished: Yes
Enclosed: Yes
Contiguous: Yes
Permitted: Yes
Wet space: Yes
Addition: No
Conversion: No

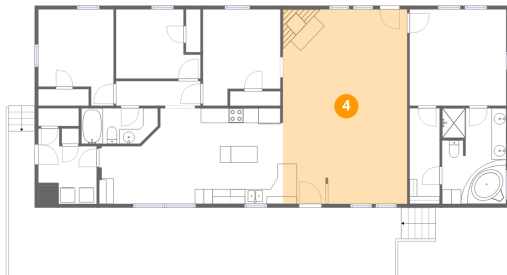
3 Floor 2 - Bath



Dimensions: 10'5" x 4'10"
Area: 47 sq. ft
Counted as living area: Yes

Heated: Yes
Finished: Yes
Enclosed: Yes
Contiguous: Yes
Permitted: Yes
Wet space: Yes
Addition: No
Conversion: No

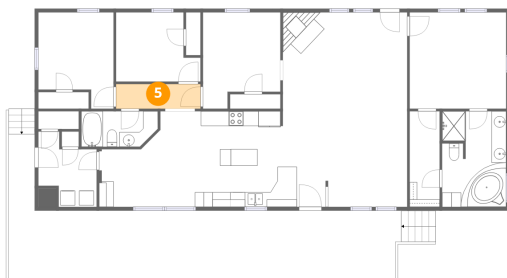
4 Floor 2 - Living Room



Dimensions: 16'10" x 26'4"
Area: 444 sq. ft
Counted as living area: Yes

Heated: Yes
Finished: Yes
Enclosed: Yes
Contiguous: Yes
Permitted: Yes
Wet space: No
Addition: No
Conversion: No

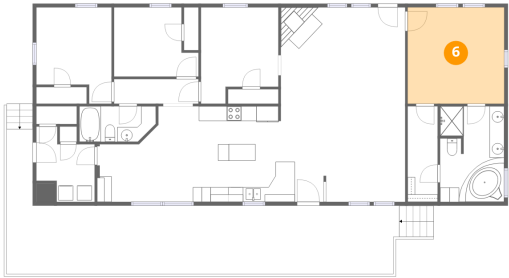
5 Floor 2 - Hall



Dimensions: 11'5" x 3'4"
Area: 38 sq. ft
Counted as living area: Yes

Heated: Yes
Finished: Yes
Enclosed: Yes
Contiguous: Yes
Permitted: Yes
Wet space: No
Addition: No
Conversion: No

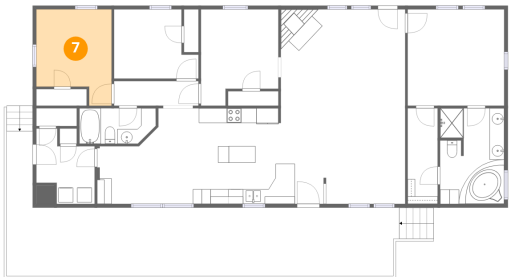
6 Floor 2 - Primary Bedroom



Dimensions: 13'1" x 13'1"
Area: 171 sq. ft
Counted as living area: Yes

Heated: Yes
Finished: Yes
Enclosed: Yes
Contiguous: Yes
Permitted: Yes
Wet space: No
Addition: No
Conversion: No

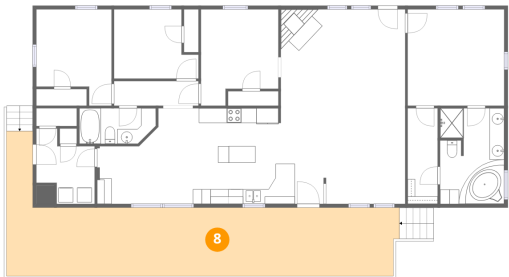
7 Floor 2 - Bedroom



Dimensions: 10'2" x 13'1"
Area: 115 sq. ft
Counted as living area: Yes

Heated: Yes
Finished: Yes
Enclosed: Yes
Contiguous: Yes
Permitted: Yes
Wet space: No
Addition: No
Conversion: No

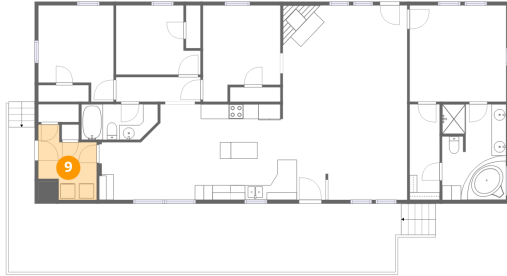
8 Floor 2 - Porch



Dimensions: 53'3" x 19'7"
Area: 526 sq. ft
Counted as living area: No

Heated: No
Finished: No
Enclosed: No
Contiguous: Yes
Permitted: Yes
Wet space: No
Addition: No
Conversion: No

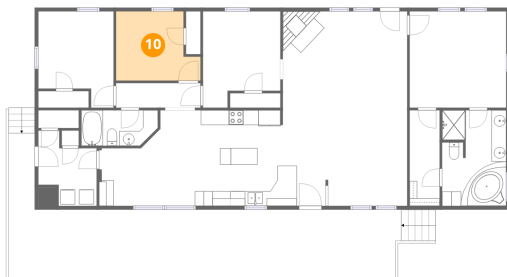
9 Floor 2 - Laundry



Dimensions: 7'11" x 10'2"
Area: 61 sq. ft
Counted as living area: Yes

Heated: Yes
Finished: Yes
Enclosed: Yes
Contiguous: Yes
Permitted: Yes
Wet space: No
Addition: No
Conversion: No

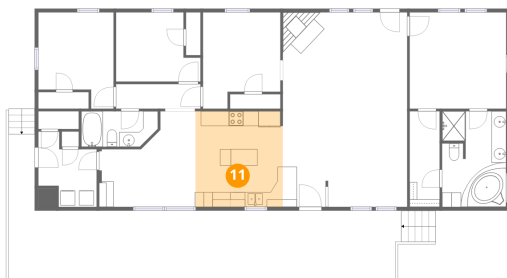
10 Floor 2 - Bedroom



Dimensions: 11'5" x 9'5"
Area: 93 sq. ft
Counted as living area: Yes

Heated: Yes
Finished: Yes
Enclosed: Yes
Contiguous: Yes
Permitted: Yes
Wet space: No
Addition: No
Conversion: No

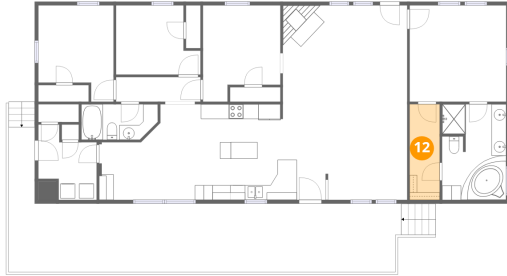
11 Floor 2 - Kitchen



Dimensions: 11'10" x 12'11"
Area: 153 sq. ft
Counted as living area: Yes

Heated: Yes
Finished: Yes
Enclosed: Yes
Contiguous: Yes
Permitted: Yes
Wet space: No
Addition: No
Conversion: No

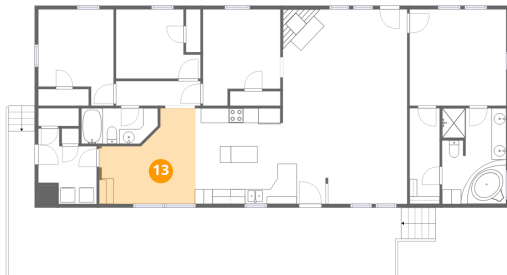
12 Floor 2 - W.I.C.



Dimensions: 4'1" x 12'11"
Area: 53 sq. ft
Counted as living area: Yes

Heated: Yes
Finished: Yes
Enclosed: Yes
Contiguous: Yes
Permitted: Yes
Wet space: No
Addition: No
Conversion: No

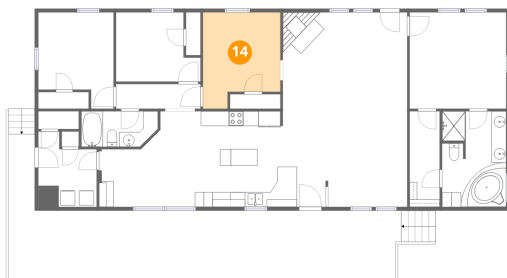
13 Floor 2 - Breakfast Nook



Dimensions: 13'1" x 12'11"
Area: 130 sq. ft
Counted as living area: Yes

Heated: Yes
Finished: Yes
Enclosed: Yes
Contiguous: Yes
Permitted: Yes
Wet space: No
Addition: No
Conversion: No

14 Floor 2 - Bedroom



Dimensions: 10'6" x 13'1"
Area: 121 sq. ft
Counted as living area: Yes

Heated: Yes
Finished: Yes
Enclosed: Yes
Contiguous: Yes
Permitted: Yes
Wet space: No
Addition: No
Conversion: No