

Home report

1681 Long Bow Lane, Clearwater, Pinellas County, Florida,
United States, 33764



Total Area: 3689 sq. ft

Floor 1: 2402 sq. ft, Floor 2: 1287 sq. ft

Excluded: Garage 486 sq. ft, Storage 84 sq. ft, Outdoor Porch Screen 513 sq. ft, Outdoor
Patio 1029 sq. ft, Room Electrical 72 sq. ft

Property summary

 **2** Floors

 **5** Bedrooms

 **3** Bathrooms

Home report

**1681 Long Bow Lane, Clearwater, Pinellas County, Florida,
United States, 33764**



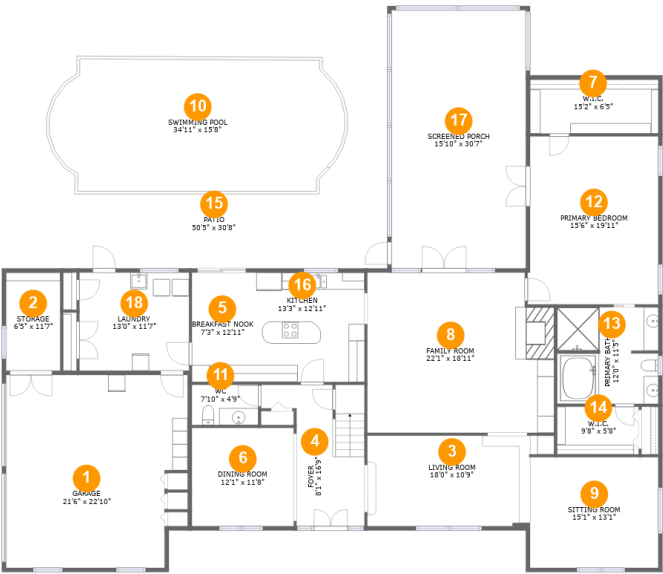
1
Half baths



1
Garages

Home report

1681 Long Bow Lane, Clearwater, Pinellas County, Florida,
United States, 33764



Room dimensions

Floor 1 Total:2402sqft Excluded: 2112sqft

#		Max Dimensions	sqft	Included
1	Garage	21'6" x 22'10"	459 sq. ft	No
2	Storage	6'5" x 11'7"	74 sq. ft	No
3	Living Room	18'0" x 10'9"	213 sq. ft	Yes
4	Foyer	8'1" x 16'9"	133 sq. ft	Yes
5	Breakfast Nook	7'3" x 12'11"	93 sq. ft	Yes
6	Dining Room	12'1" x 11'8"	140 sq. ft	Yes
7	W.I.C.	15'2" x 6'5"	97 sq. ft	Yes
8	Family Room	22'1" x 18'11"	405 sq. ft	Yes
9	Sitting Room	15'1" x 13'1"	198 sq. ft	Yes
10	Swimming Pool	34'11" x 15'8"	498 sq. ft	No
11	WC	7'10" x 4'9"	37 sq. ft	Yes

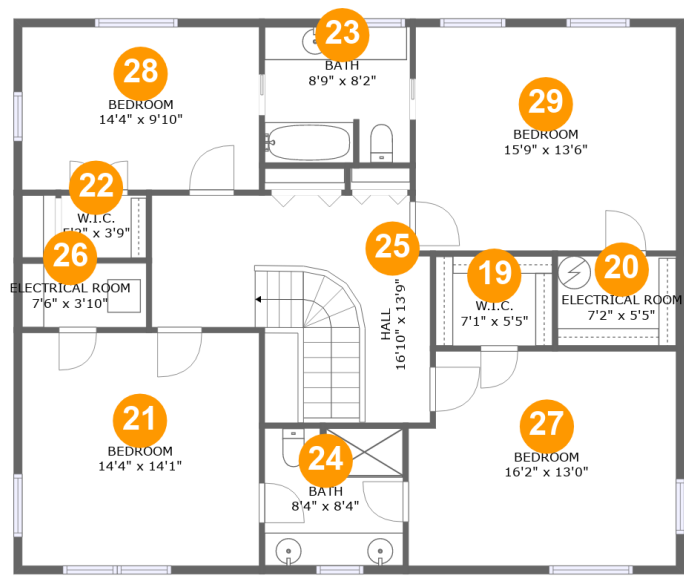
Home report

**1681 Long Bow Lane, Clearwater, Pinellas County, Florida,
United States, 33764**

#		Max Dimensions	sqft	Included
12	Primary Bedroom	15'6" x 19'11"	303 sq. ft	Yes
13	Primary Bath	12'0" x 11'5"	135 sq. ft	Yes
14	W.I.C.	9'8" x 5'8"	55 sq. ft	Yes
15	Patio	50'5" x 30'8"	1527 sq. ft	No
16	Kitchen	13'3" x 12'11"	171 sq. ft	Yes
17	Screened Porch	15'10" x 30'7"	486 sq. ft	No
18	Laundry	13'0" x 11'7"	151 sq. ft	Yes

Home report

1681 Long Bow Lane, Clearwater, Pinellas County, Florida,
United States, 33764



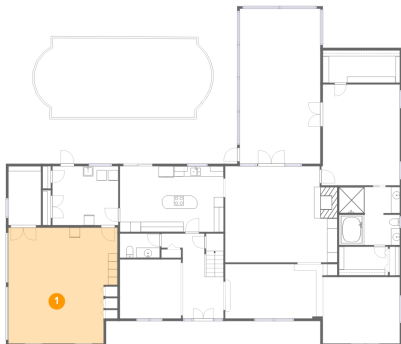
Room dimensions

Floor 2 Total:1287sqft Excluded: 72sqft

#		Max Dimensions	sqft	Included
19	W.I.C.	7'1" x 5'5"	38 sq. ft	Yes
20	Electrical Room	7'2" x 5'5"	39 sq. ft	No
21	Bedroom	14'4" x 14'1"	202 sq. ft	Yes
22	W.I.C.	5'2" x 3'9"	19 sq. ft	Yes
23	Bath	8'9" x 8'2"	71 sq. ft	Yes
24	Bath	8'4" x 8'4"	68 sq. ft	Yes
25	Hall	16'10" x 13'9"	187 sq. ft	Yes
26	Electrical Room	7'6" x 3'10"	29 sq. ft	No
27	Bedroom	16'2" x 13'0"	202 sq. ft	Yes
28	Bedroom	14'4" x 9'10"	141 sq. ft	Yes
29	Bedroom	15'9" x 13'6"	213 sq. ft	Yes

1681 Long Bow Lane, Clearwater, Pinellas County, Florida,
United States, 33764

1 Floor 1 - Garage



Max Dimensions: 21'6" x 22'10"
Calculated Area: 459 sq. ft
Included: No

Heated: No
Finished: No
Enclosed: Yes
Contiguous: Yes
Permitted: Yes
Wet space: No
Addition: No
Conversion: No

2 Floor 1 - Storage



Max Dimensions: 6'5" x 11'7"
Calculated Area: 74 sq. ft
Included: No

Heated: No
Finished: No
Enclosed: No
Contiguous: Yes
Permitted: Yes
Wet space: No
Addition: No
Conversion: No

1681 Long Bow Lane, Clearwater, Pinellas County, Florida,
United States, 33764

3 Floor 1 - Living Room



Max Dimensions: 18'0" x 10'9"
Calculated Area: 213 sq. ft
Included: Yes

Heated: Yes
Finished: Yes
Enclosed: Yes
Contiguous: Yes
Permitted: Yes
Wet space: No
Addition: No
Conversion: No

4 Floor 1 - Foyer



Max Dimensions: 8'1" x 16'9"
Calculated Area: 133 sq. ft
Included: Yes

Heated: Yes
Finished: Yes
Enclosed: Yes
Contiguous: Yes
Permitted: Yes
Wet space: No
Addition: No
Conversion: No

5 Floor 1 - Breakfast Nook



Max Dimensions: 7'3" x 12'11"
Calculated Area: 93 sq. ft
Included: Yes

Heated: Yes
Finished: Yes
Enclosed: Yes
Contiguous: Yes
Permitted: Yes
Wet space: No
Addition: No
Conversion: No

1681 Long Bow Lane, Clearwater, Pinellas County, Florida,
United States, 33764

6 Floor 1 - Dining Room



Max Dimensions: 12'1" x 11'8"
Calculated Area: 140 sq. ft
Included: Yes

Heated: Yes
Finished: Yes
Enclosed: Yes
Contiguous: Yes
Permitted: Yes
Wet space: No
Addition: No
Conversion: No

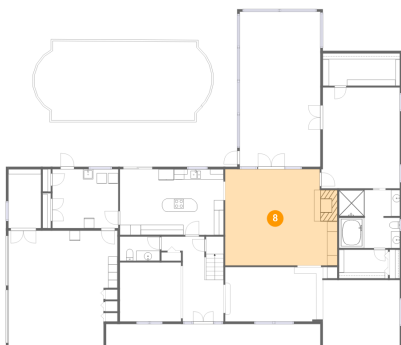
7 Floor 1 - W.I.C.



Max Dimensions: 15'2" x 6'5"
Calculated Area: 97 sq. ft
Included: Yes

Heated: Yes
Finished: Yes
Enclosed: Yes
Contiguous: Yes
Permitted: Yes
Wet space: No
Addition: No
Conversion: No

8 Floor 1 - Family Room



Max Dimensions: 22'1" x 18'11"
Calculated Area: 405 sq. ft
Included: Yes

Heated: Yes
Finished: Yes
Enclosed: Yes
Contiguous: Yes
Permitted: Yes
Wet space: No
Addition: No
Conversion: No

1681 Long Bow Lane, Clearwater, Pinellas County, Florida,
United States, 33764

9 Floor 1 - Sitting Room



Max Dimensions: 15'1" x 13'1"
Calculated Area: 198 sq. ft
Included: Yes

Heated: Yes
Finished: Yes
Enclosed: Yes
Contiguous: Yes
Permitted: Yes
Wet space: No
Addition: No
Conversion: No

10 Floor 1 - Swimming Pool



Max Dimensions: 34'11" x 15'8"
Calculated Area: 498 sq. ft
Included: No

Heated: No
Finished: No
Enclosed: No
Contiguous: Yes
Permitted: No
Wet space: No
Addition: No
Conversion: No

11 Floor 1 - WC



Max Dimensions: 7'10" x 4'9"
Calculated Area: 37 sq. ft
Included: Yes

Heated: Yes
Finished: Yes
Enclosed: Yes
Contiguous: Yes
Permitted: Yes
Wet space: Yes
Addition: No
Conversion: No

1681 Long Bow Lane, Clearwater, Pinellas County, Florida,
United States, 33764

12 Floor 1 - Primary Bedroom



Max Dimensions: 15'6" x 19'11"
Calculated Area: 303 sq. ft
Included: Yes

Heated: Yes
Finished: Yes
Enclosed: Yes
Contiguous: Yes
Permitted: Yes
Wet space: No
Addition: No
Conversion: No

13 Floor 1 - Primary Bath



Max Dimensions: 12'0" x 11'5"
Calculated Area: 135 sq. ft
Included: Yes

Heated: Yes
Finished: Yes
Enclosed: Yes
Contiguous: Yes
Permitted: Yes
Wet space: Yes
Addition: No
Conversion: No

14 Floor 1 - W.I.C.

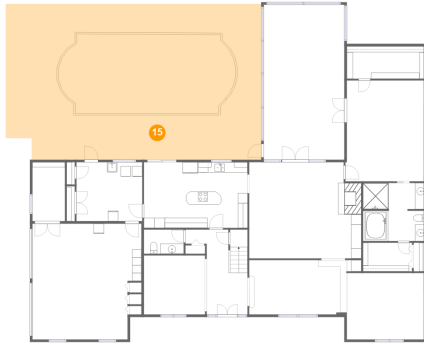


Max Dimensions: 9'8" x 5'8"
Calculated Area: 55 sq. ft
Included: Yes

Heated: Yes
Finished: Yes
Enclosed: Yes
Contiguous: Yes
Permitted: Yes
Wet space: No
Addition: No
Conversion: No

1681 Long Bow Lane, Clearwater, Pinellas County, Florida,
United States, 33764

15 Floor 1 - Patio



Max Dimensions: 50'5" x 30'8"
Calculated Area: 1527 sq. ft
Included: No

Heated: No
Finished: Yes
Enclosed: No
Contiguous: Yes
Permitted: Yes
Wet space: No
Addition: No
Conversion: No

16 Floor 1 - Kitchen



Max Dimensions: 13'3" x 12'11"
Calculated Area: 171 sq. ft
Included: Yes

Heated: Yes
Finished: Yes
Enclosed: Yes
Contiguous: Yes
Permitted: Yes
Wet space: No
Addition: No
Conversion: No

17 Floor 1 - Screened Porch



Max Dimensions: 15'10" x 30'7"
Calculated Area: 486 sq. ft
Included: No

Heated: No
Finished: Yes
Enclosed: No
Contiguous: Yes
Permitted: Yes
Wet space: No
Addition: No
Conversion: No

Home report

1681 Long Bow Lane, Clearwater, Pinellas County, Florida,
United States, 33764

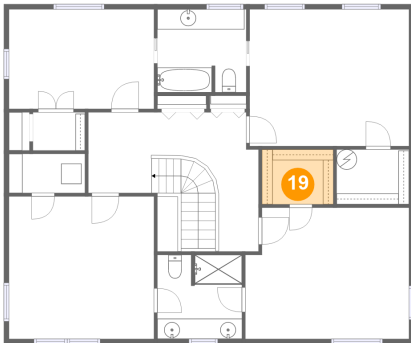
18 Floor 1 - Laundry



Max Dimensions: 13'0" x 11'7"
Calculated Area: 151 sq. ft
Included: Yes

Heated: Yes
Finished: Yes
Enclosed: Yes
Contiguous: Yes
Permitted: Yes
Wet space: No
Addition: No
Conversion: No

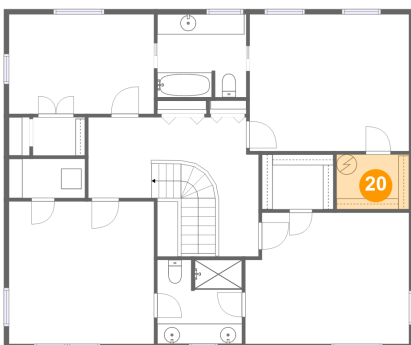
19 Floor 2 - W.I.C.



Max Dimensions: 7'1" x 5'5"
Calculated Area: 38 sq. ft
Included: Yes

Heated: Yes
Finished: Yes
Enclosed: Yes
Contiguous: Yes
Permitted: Yes
Wet space: No
Addition: No
Conversion: No

20 Floor 2 - Electrical Room

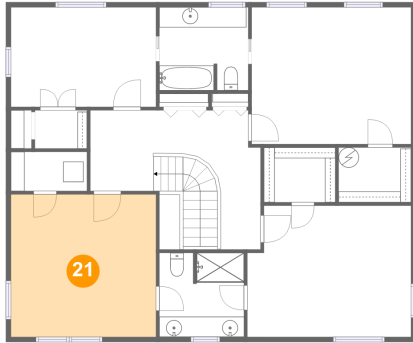


Max Dimensions: 7'2" x 5'5"
Calculated Area: 39 sq. ft
Included: No

Heated: No
Finished: No
Enclosed: Yes
Contiguous: Yes
Permitted: Yes
Wet space: No
Addition: No
Conversion: No

1681 Long Bow Lane, Clearwater, Pinellas County, Florida,
United States, 33764

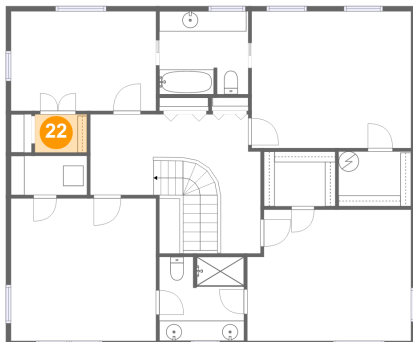
21 Floor 2 - Bedroom



Max Dimensions: 14'4" x 14'1"
Calculated Area: 202 sq. ft
Included: Yes

Heated: Yes
Finished: Yes
Enclosed: Yes
Contiguous: Yes
Permitted: Yes
Wet space: No
Addition: No
Conversion: No

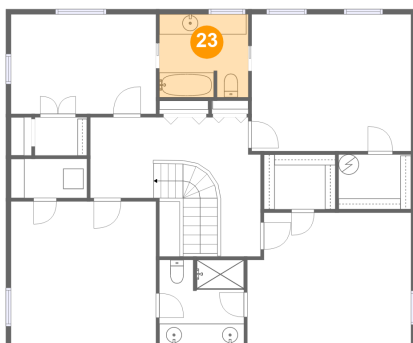
22 Floor 2 - W.I.C.



Max Dimensions: 5'2" x 3'9"
Calculated Area: 19 sq. ft
Included: Yes

Heated: Yes
Finished: Yes
Enclosed: Yes
Contiguous: Yes
Permitted: Yes
Wet space: No
Addition: No
Conversion: No

23 Floor 2 - Bath



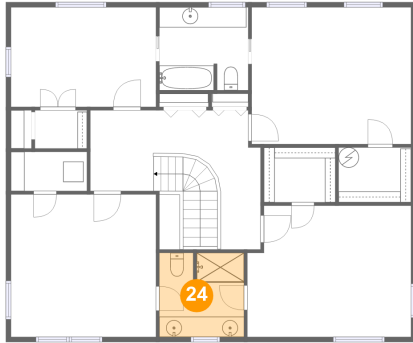
Max Dimensions: 8'9" x 8'2"
Calculated Area: 71 sq. ft
Included: Yes

Heated: Yes
Finished: Yes
Enclosed: Yes
Contiguous: Yes
Permitted: Yes
Wet space: Yes
Addition: No
Conversion: No

Home report

1681 Long Bow Lane, Clearwater, Pinellas County, Florida,
United States, 33764

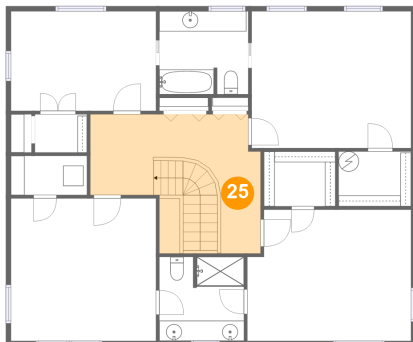
24 Floor 2 - Bath



Max Dimensions: 8'4" x 8'4"
Calculated Area: 68 sq. ft
Included: Yes

Heated: Yes
Finished: Yes
Enclosed: Yes
Contiguous: Yes
Permitted: Yes
Wet space: Yes
Addition: No
Conversion: No

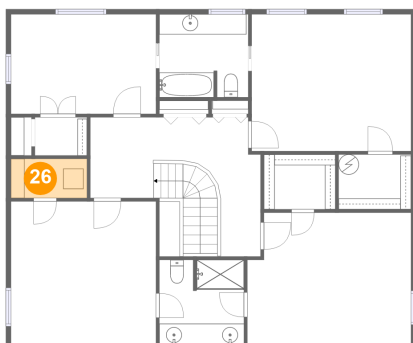
25 Floor 2 - Hall



Max Dimensions: 16'10" x
13'9"
Calculated Area: 187 sq. ft
Included: Yes

Heated: Yes
Finished: Yes
Enclosed: Yes
Contiguous:
Yes
Permitted: Yes
Wet space: No
Addition: No
Conversion: No

26 Floor 2 - Electrical Room

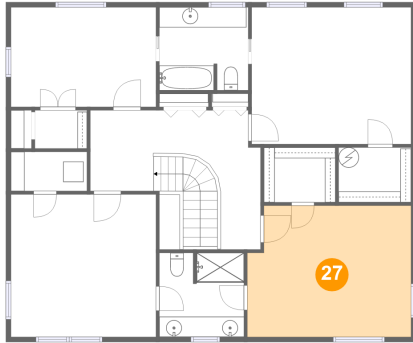


Max Dimensions: 7'6" x
3'10"
Calculated Area: 29 sq. ft
Included: No

Heated: No
Finished: No
Enclosed: Yes
Contiguous:
Yes
Permitted: Yes
Wet space: No
Addition: No
Conversion: No

1681 Long Bow Lane, Clearwater, Pinellas County, Florida,
United States, 33764

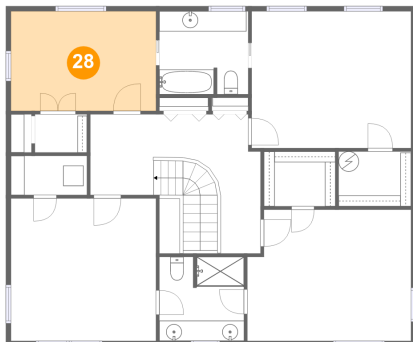
27 Floor 2 - Bedroom



Max Dimensions: 16'2" x 13'0"
Calculated Area: 202 sq. ft
Included: Yes

Heated: Yes
Finished: Yes
Enclosed: Yes
Contiguous: Yes
Permitted: Yes
Wet space: No
Addition: No
Conversion: No

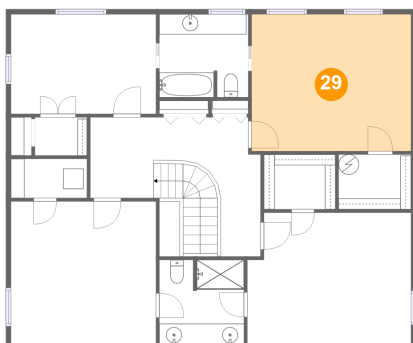
28 Floor 2 - Bedroom



Max Dimensions: 14'4" x 9'10"
Calculated Area: 141 sq. ft
Included: Yes

Heated: Yes
Finished: Yes
Enclosed: Yes
Contiguous: Yes
Permitted: Yes
Wet space: No
Addition: No
Conversion: No

29 Floor 2 - Bedroom



Max Dimensions: 15'9" x 13'6"
Calculated Area: 213 sq. ft
Included: Yes

Heated: Yes
Finished: Yes
Enclosed: Yes
Contiguous: Yes
Permitted: Yes
Wet space: No
Addition: No
Conversion: No