

Home data report

468 Vz County Road 2804, Mabank, TX, US



Total Area: 2202 sq. ft

1st Floor: 2202 sq. ft

Excluded: Walls: 115 sq. ft

Property summary

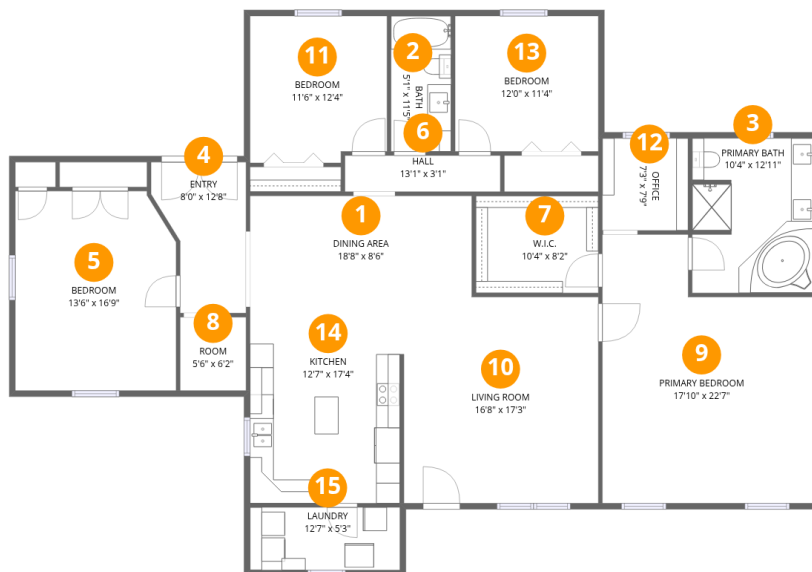
 **1** Floors

 **4** Bedrooms

 **2** Bathrooms

Home data report

468 Vz County Road 2804, Mabank, TX, US



Room dimensions

Floor 1

Total:2202sqft Excluded: 0sqft

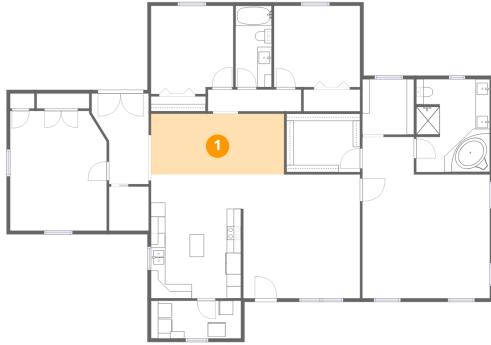
#		Dimensions	sqft	Counted as living area
1	Dining Area	18'8" x 8'6"	158 sq. ft	Yes
2	Bath	5'1" x 11'5"	57 sq. ft	Yes
3	Primary Bath	10'4" x 12'11"	131 sq. ft	Yes
4	Entry	8'0" x 12'8"	82 sq. ft	Yes
5	Bedroom	13'6" x 16'9"	221 sq. ft	Yes
6	Hall	13'1" x 3'1"	40 sq. ft	Yes
7	W.I.C.	10'4" x 8'2"	84 sq. ft	Yes
8	Room	5'6" x 6'2"	34 sq. ft	Yes
9	Primary Bedroom	17'10" x 22'7"	347 sq. ft	Yes
10	Living Room	16'8" x 17'3"	285 sq. ft	Yes
11	Bedroom	11'6" x 12'4"	138 sq. ft	Yes

Home data report

468 Vz County Road 2804,Mabank,TX,US

#		Dimensions	sqft	Counted as living area
12	Office	7'3" x 7'9"	56 sq. ft	Yes
13	Bedroom	12'0" x 11'4"	137 sq. ft	Yes
14	Kitchen	12'7" x 17'4"	218 sq. ft	Yes
15	Laundry	12'7" x 5'3"	66 sq. ft	Yes

1 Floor 1 - Dining Area



Dimensions: 18'8" x 8'6"
Area: 158 sq. ft
Counted as living area: Yes

Heated: Yes
Finished: Yes
Enclosed: Yes
Contiguous: Yes
Permitted: Yes
Wet space: No
Addition: No
Conversion: No

2 Floor 1 - Bath



Dimensions: 5'1" x 11'5"
Area: 57 sq. ft
Counted as living area: Yes

Heated: Yes
Finished: Yes
Enclosed: Yes
Contiguous: Yes
Permitted: Yes
Wet space: Yes
Addition: No
Conversion: No

3 Floor 1 - Primary Bath



Dimensions: 10'4" x 12'11"
Area: 131 sq. ft
Counted as living area: Yes

Heated: Yes
Finished: Yes
Enclosed: Yes
Contiguous: Yes
Permitted: Yes
Wet space: Yes
Addition: No
Conversion: No

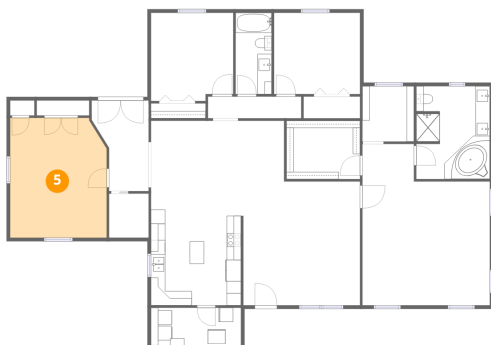
4 Floor 1 - Entry



Dimensions: 8'0" x 12'8"
Area: 82 sq. ft
Counted as living area: Yes

Heated: Yes
Finished: Yes
Enclosed: Yes
Contiguous: Yes
Permitted: Yes
Wet space: No
Addition: No
Conversion: No

5 Floor 1 - Bedroom



Dimensions: 13'6" x 16'9"
Area: 221 sq. ft
Counted as living area: Yes

Heated: Yes
Finished: Yes
Enclosed: Yes
Contiguous: Yes
Permitted: Yes
Wet space: No
Addition: No
Conversion: No

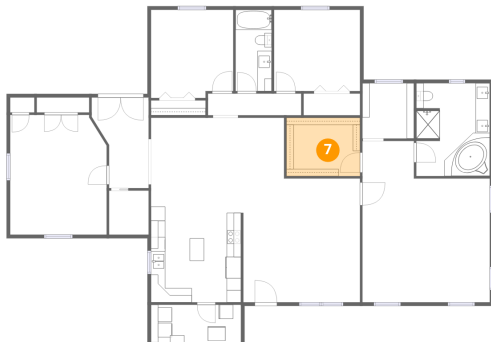
6 Floor 1 - Hall



Dimensions: 13'1" x 3'1"
Area: 40 sq. ft
Counted as living area: Yes

Heated: Yes
Finished: Yes
Enclosed: Yes
Contiguous: Yes
Permitted: Yes
Wet space: No
Addition: No
Conversion: No

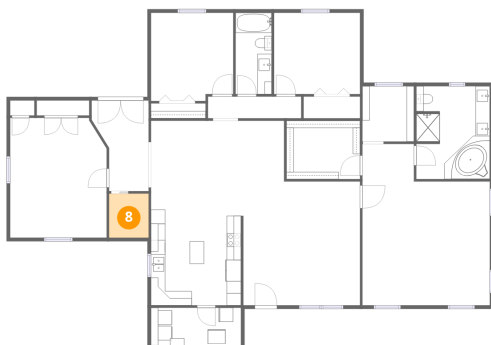
7 Floor 1 - W.I.C.



Dimensions: 10'4" x 8'2"
Area: 84 sq. ft
Counted as living area: Yes

Heated: Yes
Finished: Yes
Enclosed: Yes
Contiguous: Yes
Permitted: Yes
Wet space: No
Addition: No
Conversion: No

8 Floor 1 - Room



Dimensions: 5'6" x 6'2"
Area: 34 sq. ft
Counted as living area: Yes

Heated: Yes
Finished: Yes
Enclosed: Yes
Contiguous: Yes
Permitted: Yes
Wet space: No
Addition: No
Conversion: No

9 Floor 1 - Primary Bedroom



Dimensions: 17'10" x 22'7"
Area: 347 sq. ft
Counted as living area: Yes

Heated: Yes
Finished: Yes
Enclosed: Yes
Contiguous: Yes
Permitted: Yes
Wet space: No
Addition: No
Conversion: No

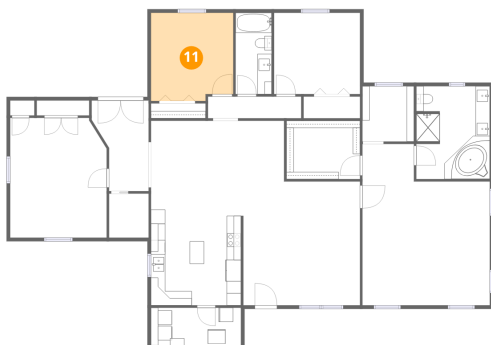
10 Floor 1 - Living Room



Dimensions: 16'8" x 17'3"
Area: 285 sq. ft
Counted as living area: Yes

Heated: Yes
Finished: Yes
Enclosed: Yes
Contiguous: Yes
Permitted: Yes
Wet space: No
Addition: No
Conversion: No

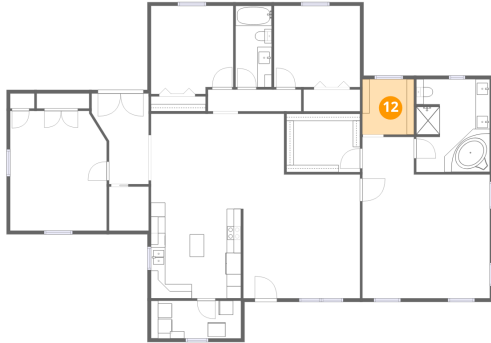
11 Floor 1 - Bedroom



Dimensions: 11'6" x 12'4"
Area: 138 sq. ft
Counted as living area: Yes

Heated: Yes
Finished: Yes
Enclosed: Yes
Contiguous: Yes
Permitted: Yes
Wet space: No
Addition: No
Conversion: No

12 Floor 1 - Office



Dimensions: 7'3" x 7'9"
Area: 56 sq. ft
Counted as living area: Yes

Heated: Yes
Finished: Yes
Enclosed: Yes
Contiguous: Yes
Permitted: Yes
Wet space: No
Addition: No
Conversion: No

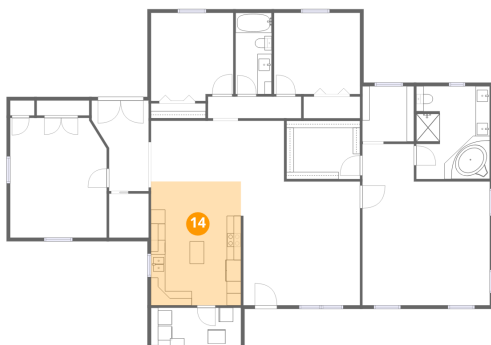
13 Floor 1 - Bedroom



Dimensions: 12'0" x 11'4"
Area: 137 sq. ft
Counted as living area: Yes

Heated: Yes
Finished: Yes
Enclosed: Yes
Contiguous: Yes
Permitted: Yes
Wet space: No
Addition: No
Conversion: No

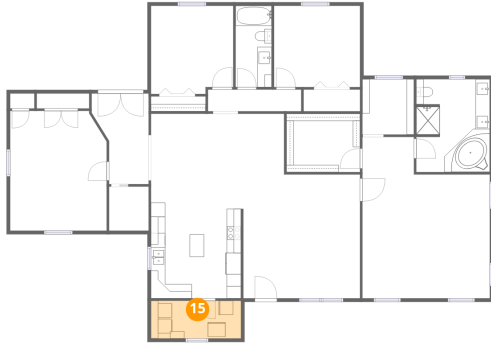
14 Floor 1 - Kitchen



Dimensions: 12'7" x 17'4"
Area: 218 sq. ft
Counted as living area: Yes

Heated: Yes
Finished: Yes
Enclosed: Yes
Contiguous: Yes
Permitted: Yes
Wet space: No
Addition: No
Conversion: No

15 Floor 1 - Laundry



Dimensions: 12'7" x 5'3"
Area: 66 sq. ft
Counted as living area: Yes

Heated: Yes
Finished: Yes
Enclosed: Yes
Contiguous: Yes
Permitted: Yes
Wet space: No
Addition: No
Conversion: No