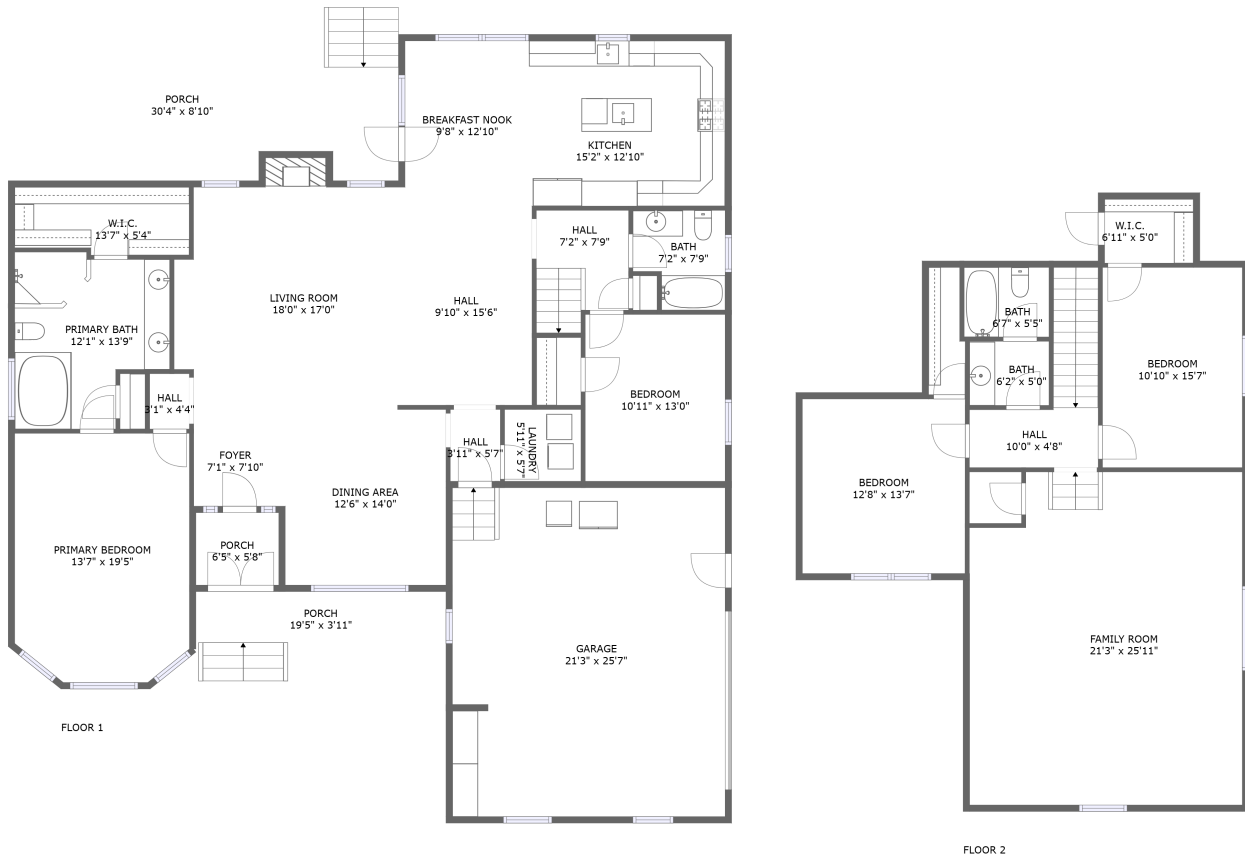



2026 Prestwick Drive, Scotland Acres, Murfreesboro, Rutherford County, Tennessee, United States, 37130



Property summary


 **1** Garages

 **4** Bedrooms

 **3** Bathrooms

 **0** Half baths

 **2** Floors

 **2,985** Gross living area sqft

 **4,156** Total sqft

2026 Prestwick Drive, Scotland Acres, Murfreesboro, Rutherford County, Tennessee, United States, 37130



Room dimensions

Floor 1

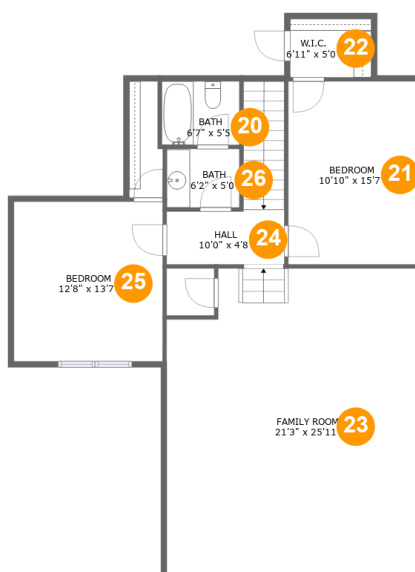
Total sqft: 2939 Living area: 1981

#		Dimensions	sqft	Counted as living area
1	Hall	3'1" x 4'4"	13 sq. ft	Yes
2	W.I.C.	13'7" x 5'4"	69 sq. ft	Yes
3	Hall	7'2" x 7'9"	62 sq. ft	Yes
4	Garage	21'3" x 25'7"	542 sq. ft	No
5	Hall	9'10" x 15'6"	153 sq. ft	Yes
6	Porch	30'4" x 8'10"	256 sq. ft	No
7	Dining Area	12'6" x 14'0"	174 sq. ft	Yes
8	Bedroom	10'11" x 13'0"	141 sq. ft	Yes
9	Breakfast Nook	9'8" x 12'10"	124 sq. ft	Yes
10	Bath	7'2" x 7'9"	49 sq. ft	Yes
11	Foyer	7'1" x 7'10"	56 sq. ft	Yes

**2026 Prestwick Drive, Scotland Acres, Murfreesboro,
Rutherford County, Tennessee, United States, 37130**

#		Dimensions	sqft	Counted as living area
12	Living Room	18'0" x 17'0"	303 sq. ft	Yes
13	Primary Bedroom	13'7" x 19'5"	254 sq. ft	Yes
14	Kitchen	15'2" x 12'10"	196 sq. ft	Yes
15	Laundry	5'11" x 5'7"	33 sq. ft	Yes
16	Porch	6'5" x 5'8"	36 sq. ft	No
17	Hall	3'11" x 5'7"	22 sq. ft	Yes
18	Porch	19'5" x 3'11"	77 sq. ft	No
19	Primary Bath	12'1" x 13'9"	143 sq. ft	Yes

2026 Prestwick Drive, Scotland Acres, Murfreesboro, Rutherford County, Tennessee, United States, 37130



Room dimensions

Floor 2

Total sqft: 1217 Living area: 1004

#		Dimensions	sqft	Counted as living area
20	Bath	6'7" x 5'5"	36 sq. ft	Yes
21	Bedroom	10'10" x 15'7"	169 sq. ft	Yes
22	W.I.C.	6'11" x 5'0"	24 sq. ft	Yes
23	Family Room	21'3" x 25'11"	386 sq. ft	Yes
24	Hall	10'0" x 4'8"	84 sq. ft	Yes
25	Bedroom	12'8" x 13'7"	172 sq. ft	Yes
26	Bath	6'2" x 5'0"	31 sq. ft	Yes

2026 Prestwick Drive, Scotland Acres, Murfreesboro, Rutherford County, Tennessee, United States, 37130

1 Floor 1 - Hall



Dimensions: 3'1" x 4'4"
Area: 13 sq. ft
Counted as living area: Yes

Heated: Yes
Finished: Yes
Enclosed: Yes
Contiguous: Yes
Permitted: Yes
Wet space: No
Addition: No
Conversion: No

2 Floor 1 - W.I.C.



Dimensions: 13'7" x 5'4"
Area: 69 sq. ft
Counted as living area: Yes

Heated: Yes
Finished: Yes
Enclosed: Yes
Contiguous: Yes
Permitted: Yes
Wet space: No
Addition: No
Conversion: No

2026 Prestwick Drive, Scotland Acres, Murfreesboro, Rutherford County, Tennessee, United States, 37130

3 Floor 1 - Hall



Dimensions: 7'2" x 7'9"
Area: 62 sq. ft
Counted as living area: Yes

Heated: Yes
Finished: Yes
Enclosed: Yes
Contiguous: Yes
Permitted: Yes
Wet space: No
Addition: No
Conversion: No

4 Floor 1 - Garage



Dimensions: 21'3" x 25'7"
Area: 542 sq. ft
Counted as living area: No

Heated: No
Finished: No
Enclosed: Yes
Contiguous: Yes
Permitted: Yes
Wet space: No
Addition: No
Conversion: No

5 Floor 1 - Hall



Dimensions: 9'10" x 15'6"
Area: 153 sq. ft
Counted as living area: Yes

Heated: Yes
Finished: Yes
Enclosed: Yes
Contiguous: Yes
Permitted: Yes
Wet space: No
Addition: No
Conversion: No

2026 Prestwick Drive, Scotland Acres, Murfreesboro, Rutherford County, Tennessee, United States, 37130

6 Floor 1 - Porch



Dimensions: 30'4" x 8'10"
Area: 256 sq. ft
Counted as living area: No

Heated: No
Finished: Yes
Enclosed: No
Contiguous: Yes
Permitted: Yes
Wet space: No
Addition: No
Conversion: No

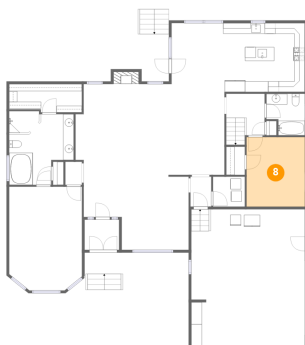
7 Floor 1 - Dining Area



Dimensions: 12'6" x 14'0"
Area: 174 sq. ft
Counted as living area: Yes

Heated: Yes
Finished: Yes
Enclosed: Yes
Contiguous: Yes
Permitted: Yes
Wet space: No
Addition: No
Conversion: No

8 Floor 1 - Bedroom



Dimensions: 10'11" x 13'0"
Area: 141 sq. ft
Counted as living area: Yes

Heated: Yes
Finished: Yes
Enclosed: Yes
Contiguous: Yes
Permitted: Yes
Wet space: No
Addition: No
Conversion: No

2026 Prestwick Drive, Scotland Acres, Murfreesboro, Rutherford County, Tennessee, United States, 37130

9 Floor 1 - Breakfast Nook



Dimensions: 9'8" x 12'10"
Area: 124 sq. ft
Counted as living area: Yes

Heated: Yes
Finished: Yes
Enclosed: Yes
Contiguous: Yes
Permitted: Yes
Wet space: No
Addition: No
Conversion: No

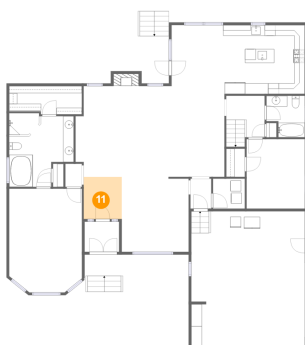
10 Floor 1 - Bath



Dimensions: 7'2" x 7'9"
Area: 49 sq. ft
Counted as living area: Yes

Heated: Yes
Finished: Yes
Enclosed: Yes
Contiguous: Yes
Permitted: Yes
Wet space: Yes
Addition: No
Conversion: No

11 Floor 1 - Foyer

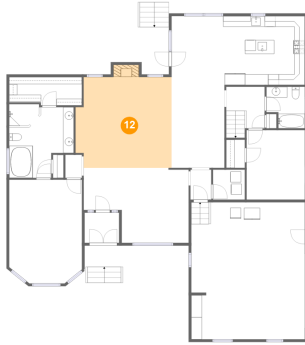


Dimensions: 7'1" x 7'10"
Area: 56 sq. ft
Counted as living area: Yes

Heated: Yes
Finished: Yes
Enclosed: Yes
Contiguous: Yes
Permitted: Yes
Wet space: No
Addition: No
Conversion: No

2026 Prestwick Drive, Scotland Acres, Murfreesboro, Rutherford County, Tennessee, United States, 37130

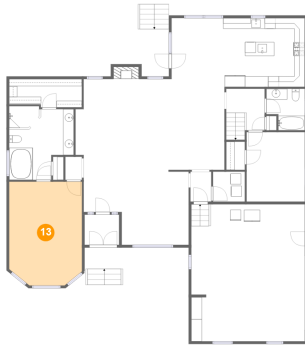
12 Floor 1 - Living Room



Dimensions: 18'0" x 17'0"
Area: 303 sq. ft
Counted as living area: Yes

Heated: Yes
Finished: Yes
Enclosed: Yes
Contiguous: Yes
Permitted: Yes
Wet space: No
Addition: No
Conversion: No

13 Floor 1 - Primary Bedroom



Dimensions: 13'7" x 19'5"
Area: 254 sq. ft
Counted as living area: Yes

Heated: Yes
Finished: Yes
Enclosed: Yes
Contiguous: Yes
Permitted: Yes
Wet space: No
Addition: No
Conversion: No

14 Floor 1 - Kitchen



Dimensions: 15'2" x 12'10"
Area: 196 sq. ft
Counted as living area: Yes

Heated: Yes
Finished: Yes
Enclosed: Yes
Contiguous: Yes
Permitted: Yes
Wet space: No
Addition: No
Conversion: No

2026 Prestwick Drive, Scotland Acres, Murfreesboro, Rutherford County, Tennessee, United States, 37130

15 Floor 1 - Laundry



Dimensions: 5'11" x 5'7"
Area: 33 sq. ft
Counted as living area: Yes

Heated: Yes
Finished: Yes
Enclosed: Yes
Contiguous: Yes
Permitted: Yes
Wet space: No
Addition: No
Conversion: No

16 Floor 1 - Porch



Dimensions: 6'5" x 5'8"
Area: 36 sq. ft
Counted as living area: No

Heated: No
Finished: Yes
Enclosed: No
Contiguous: Yes
Permitted: Yes
Wet space: No
Addition: No
Conversion: No

17 Floor 1 - Hall



Dimensions: 3'11" x 5'7"
Area: 22 sq. ft
Counted as living area: Yes

Heated: Yes
Finished: Yes
Enclosed: Yes
Contiguous: Yes
Permitted: Yes
Wet space: No
Addition: No
Conversion: No

2026 Prestwick Drive, Scotland Acres, Murfreesboro, Rutherford County, Tennessee, United States, 37130

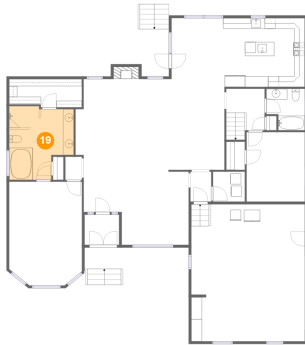
18 Floor 1 - Porch



Dimensions: 19'5" x 3'11"
Area: 77 sq. ft
Counted as living area: No

Heated: No
Finished: Yes
Enclosed: No
Contiguous: Yes
Permitted: Yes
Wet space: No
Addition: No
Conversion: No

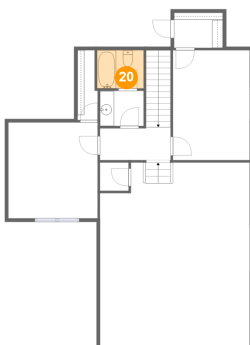
19 Floor 1 - Primary Bath



Dimensions: 12'1" x 13'9"
Area: 143 sq. ft
Counted as living area: Yes

Heated: Yes
Finished: Yes
Enclosed: Yes
Contiguous: Yes
Permitted: Yes
Wet space: Yes
Addition: No
Conversion: No

20 Floor 2 - Bath

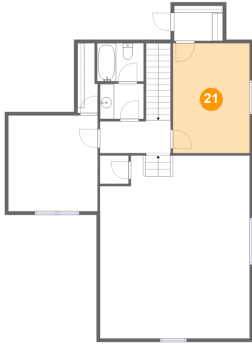


Dimensions: 6'7" x 5'5"
Area: 36 sq. ft
Counted as living area: Yes

Heated: Yes
Finished: Yes
Enclosed: Yes
Contiguous: Yes
Permitted: Yes
Wet space: Yes
Addition: No
Conversion: No

**2026 Prestwick Drive, Scotland Acres, Murfreesboro,
Rutherford County, Tennessee, United States, 37130**

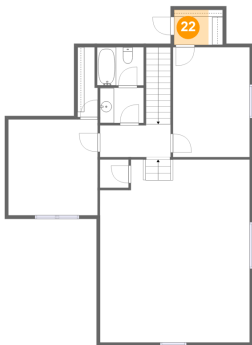
21 Floor 2 - Bedroom



Dimensions: 10'10" x 15'7"
Area: 169 sq. ft
Counted as living area: Yes

Heated: Yes
Finished: Yes
Enclosed: Yes
Contiguous: Yes
Permitted: Yes
Wet space: No
Addition: No
Conversion: No

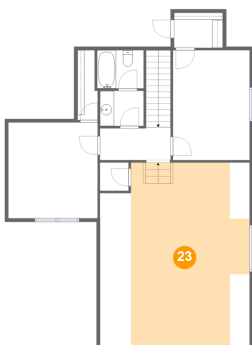
22 Floor 2 - W.I.C.



Dimensions: 6'11" x 5'0"
Area: 24 sq. ft
Counted as living area: Yes

Heated: Yes
Finished: Yes
Enclosed: Yes
Contiguous: Yes
Permitted: Yes
Wet space: No
Addition: No
Conversion: No

23 Floor 2 - Family Room

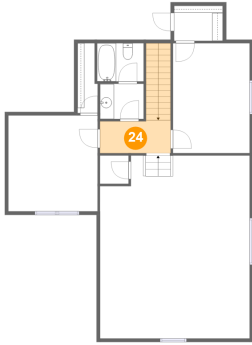


Dimensions: 21'3" x 25'11"
Area: 386 sq. ft
Counted as living area: Yes

Heated: Yes
Finished: Yes
Enclosed: Yes
Contiguous: Yes
Permitted: Yes
Wet space: No
Addition: No
Conversion: No

2026 Prestwick Drive, Scotland Acres, Murfreesboro, Rutherford County, Tennessee, United States, 37130

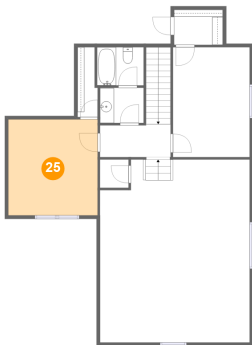
24 Floor 2 - Hall



Dimensions: 10'0" x 4'8"
Area: 84 sq. ft
Counted as living area: Yes

Heated: Yes
Finished: Yes
Enclosed: Yes
Contiguous: Yes
Permitted: Yes
Wet space: No
Addition: No
Conversion: No

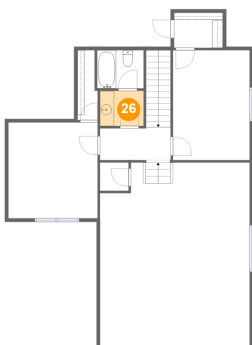
25 Floor 2 - Bedroom



Dimensions: 12'8" x 13'7"
Area: 172 sq. ft
Counted as living area: Yes

Heated: Yes
Finished: Yes
Enclosed: Yes
Contiguous: Yes
Permitted: Yes
Wet space: No
Addition: No
Conversion: No

26 Floor 2 - Bath



Dimensions: 6'2" x 5'0"
Area: 31 sq. ft
Counted as living area: Yes

Heated: Yes
Finished: Yes
Enclosed: Yes
Contiguous: Yes
Permitted: Yes
Wet space: Yes
Addition: No
Conversion: No