

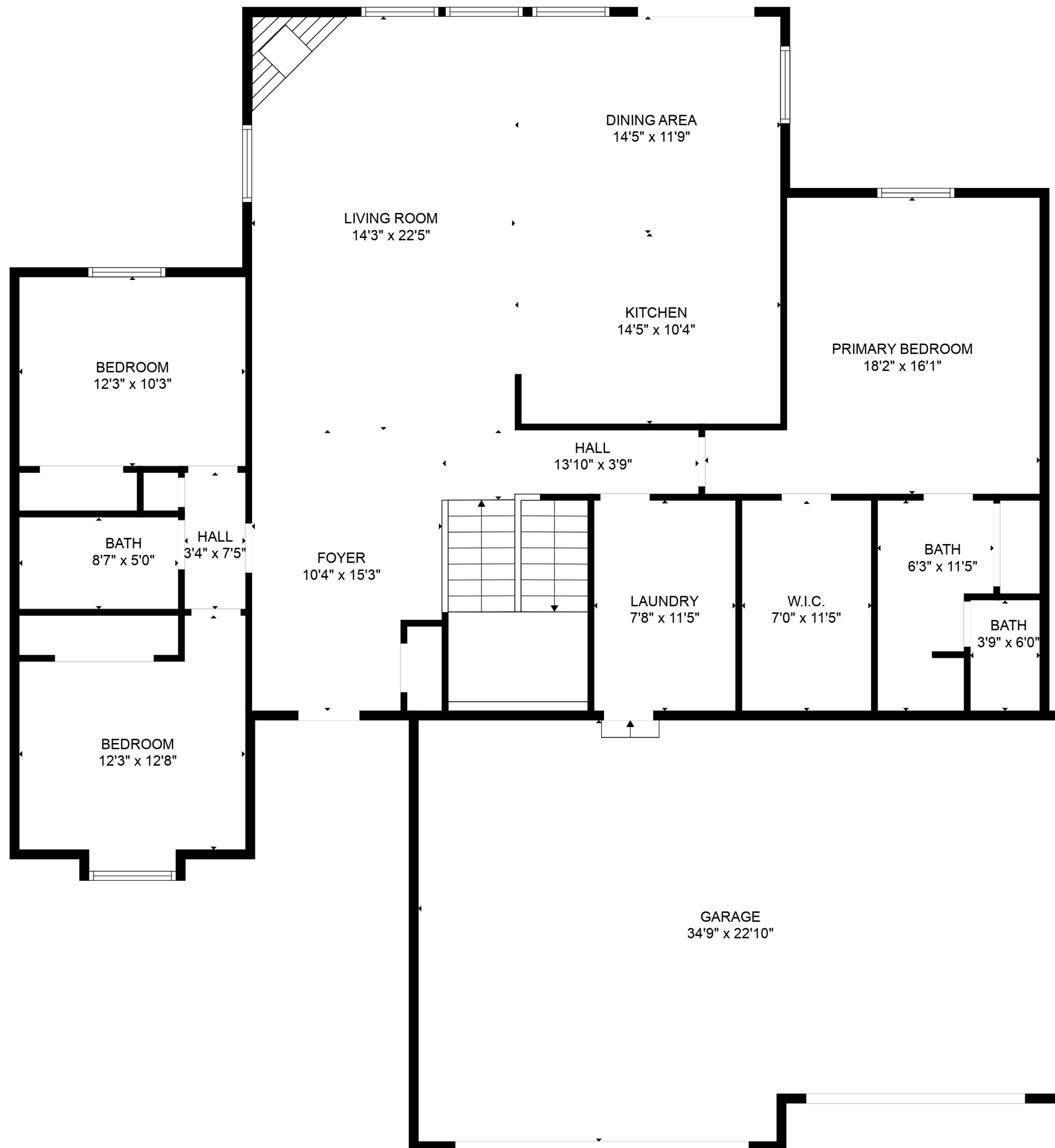
BASEMENT  
38'8" x 23'5"

BASEMENT  
22'11" x 30'0"

HALL  
3'7" x 4'2"

ELECTRICAL ROOM  
23'8" x 12'10"

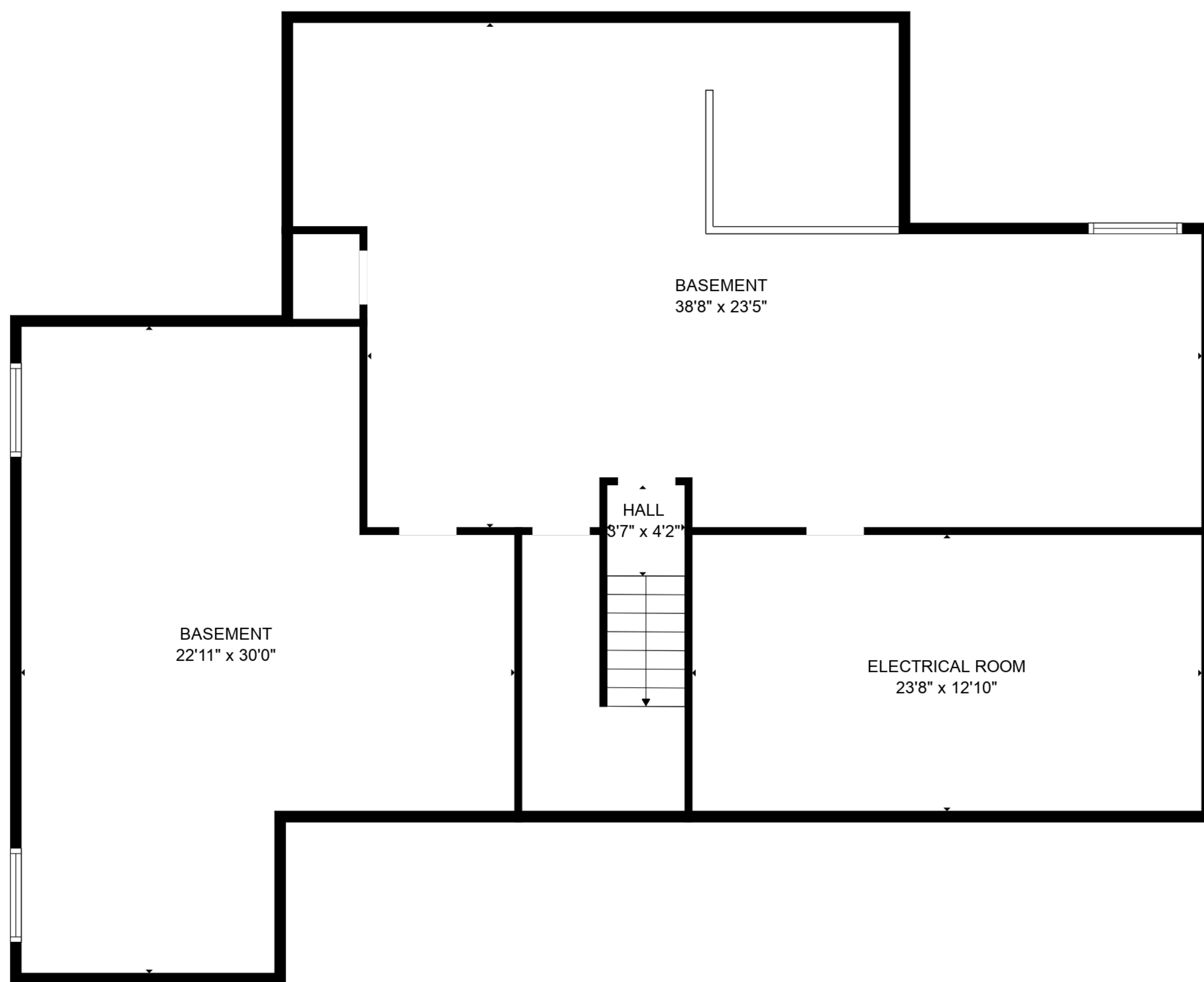
**TOTAL: 1978 sq. ft**  
BELOW GROUND: 119 sq. ft, FLOOR 2: 1859 sq. ft  
EXCLUDED AREAS: BASEMENT: 1345 sq. ft, ELECTRICAL ROOM: 304 sq. ft, UNDEFINED: 12 sq. ft,  
GARAGE: 755 sq. ft, BAY WINDOW: 7 sq. ft



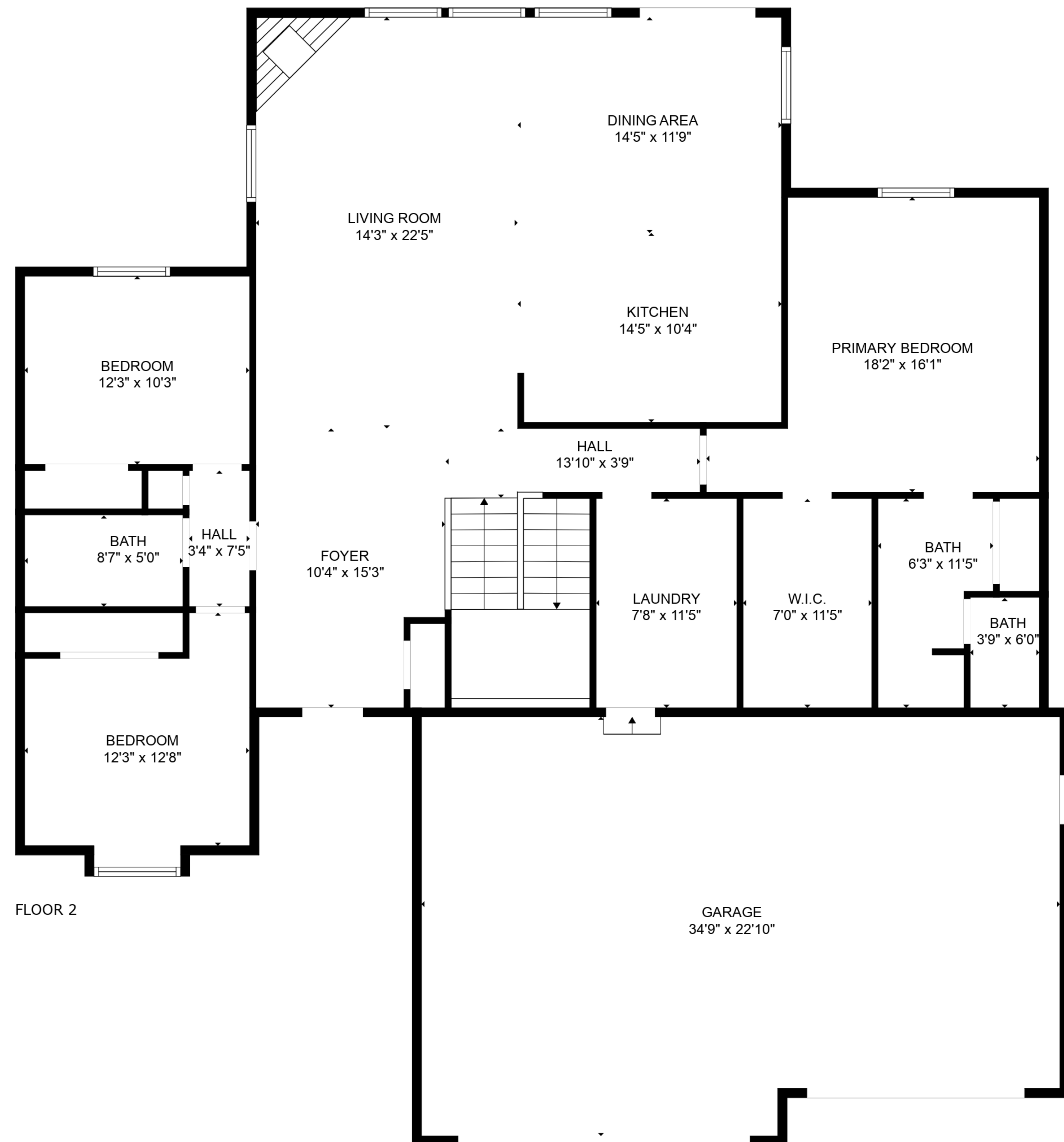
**TOTAL: 1978 sq. ft**

BELOW GROUND: 119 sq. ft, FLOOR 2: 1859 sq. ft

EXCLUDED AREAS: BASEMENT: 1345 sq. ft, ELECTRICAL ROOM: 304 sq. ft, UNDEFINED: 12 sq. ft,  
GARAGE: 755 sq. ft, BAY WINDOW: 7 sq. ft



FLOOR 1



FLOOR 2

**TOTAL: 1978 sq. ft**  
 BELOW GROUND: 119 sq. ft, FLOOR 2: 1859 sq. ft  
 EXCLUDED AREAS: BASEMENT: 1345 sq. ft, ELECTRICAL ROOM: 304 sq. ft, UNDEFINED: 12 sq. ft,  
 GARAGE: 755 sq. ft, BAY WINDOW: 7 sq. ft