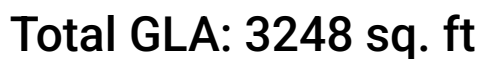


**5692 Hunt Camp Road, Southern Pines, Cave Spring, Roanoke,
Roanoke County, Virginia, United States, 24018**



Excluded: Garage 1030 sq. ft, Porch 106 sq. ft, Covered patio 670 sq. ft, Patio 1514 sq. ft

Property summary



Home report

**5692 Hunt Camp Road, Southern Pines, Cave Spring, Roanoke,
Roanoke County, Virginia, United States, 24018**



1

Half baths



2

Garages

Home report

5692 Hunt Camp Road, Southern Pines, Cave Spring, Roanoke,
Roanoke County, Virginia, United States, 24018



Room dimensions

Floor 1 Total:3248sqft Excluded: 3320sqft

#		Max Dimensions	sqft	Included
1	Swimming Pool	15'7" x 36'11"	577 sq. ft	No
2	Covered Patio	41'4" x 17'1"	670 sq. ft	No
3	Dining Room	13'10" x 11'7"	161 sq. ft	Yes
4	Kitchen	14'11" x 21'6"	302 sq. ft	Yes
5	W.I.C.	4'6" x 5'6"	25 sq. ft	Yes
6	Bath	6'0" x 9'1"	55 sq. ft	Yes
7	Yard	19'11" x 31'1"	121 sq. ft	No
8	Bedroom	12'6" x 12'10"	160 sq. ft	Yes
9	Yard	3'0" x 8'8"	25 sq. ft	No
10	Family Room	22'7" x 21'6"	485 sq. ft	Yes
11	Living Room	14'4" x 10'4"	148 sq. ft	Yes

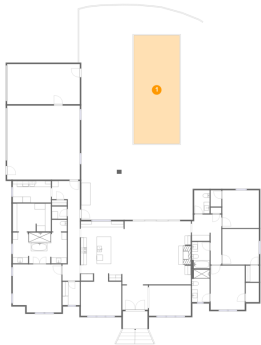
Home report

**5692 Hunt Camp Road, Southern Pines, Cave Spring, Roanoke,
Roanoke County, Virginia, United States, 24018**

#		Max Dimensions	sqft	Included
12	W.I.C.	3'8" x 5'7"	20 sq. ft	Yes
13	Hall	10'1" x 17'1"	117 sq. ft	Yes
14	W.I.C.	13'0" x 9'6"	123 sq. ft	Yes
15	Primary Bath	18'5" x 14'10"	215 sq. ft	Yes
16	Bedroom	11'8" x 15'1"	175 sq. ft	Yes
17	Pantry	5'11" x 8'0"	47 sq. ft	Yes
18	Yard	3'0" x 7'7"	23 sq. ft	No
19	Bath	6'1" x 11'2"	67 sq. ft	Yes
20	WC	5'3" x 7'11"	42 sq. ft	Yes
21	Laundry	13'0" x 7'4"	96 sq. ft	Yes
22	Bedroom	16'7" x 16'4"	260 sq. ft	Yes
23	W.I.C.	4'6" x 6'7"	30 sq. ft	Yes
24	Hall	9'6" x 34'0"	183 sq. ft	Yes
25	Foyer	8'9" x 8'8"	74 sq. ft	Yes
26	Bedroom	12'6" x 12'2"	151 sq. ft	Yes
27	Garage	24'10" x 25'2"	625 sq. ft	No
28	Patio	42'1" x 52'8"	2090 sq. ft	No
29	Porch	8'5" x 6'0"	106 sq. ft	No
30	Yard	6'11" x 3'3"	23 sq. ft	No
31	Garage	24'10" x 13'8"	339 sq. ft	No

5692 Hunt Camp Road, Southern Pines, Cave Spring, Roanoke,
Roanoke County, Virginia, United States, 24018

1 Floor 1 - Swimming Pool



Max Dimensions: 15'7" x 36'11"
Calculated Area: 577 sq. ft
Included: No

Heated: No
Finished: No
Enclosed: No
Contiguous: Yes
Permitted: No
Wet space: No
Addition: No
Conversion: No

2 Floor 1 - Covered Patio



Max Dimensions: 41'4" x 17'1"
Calculated Area: 670 sq. ft
Included: No

Heated: No
Finished: Yes
Enclosed: No
Contiguous: Yes
Permitted: Yes
Wet space: No
Addition: No
Conversion: No

3 Floor 1 - Dining Room



Max Dimensions: 13'10" x 11'7"
Calculated Area: 161 sq. ft
Included: Yes

Heated: Yes
Finished: Yes
Enclosed: Yes
Contiguous: Yes
Permitted: Yes
Wet space: No
Addition: No
Conversion: No

4 Floor 1 - Kitchen



Max Dimensions: 14'11" x 21'6"
Calculated Area: 302 sq. ft
Included: Yes

Heated: Yes
Finished: Yes
Enclosed: Yes
Contiguous: Yes
Permitted: Yes
Wet space: No
Addition: No
Conversion: No

5 Floor 1 - W.I.C.



Max Dimensions: 4'6" x 5'6"
Calculated Area: 25 sq. ft
Included: Yes

Heated: Yes
Finished: Yes
Enclosed: Yes
Contiguous: Yes
Permitted: Yes
Wet space: No
Addition: No
Conversion: No

5692 Hunt Camp Road, Southern Pines, Cave Spring, Roanoke,
Roanoke County, Virginia, United States, 24018

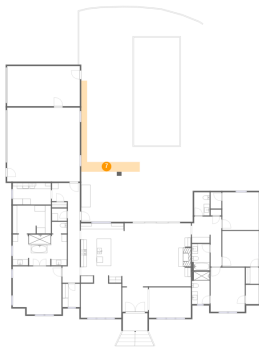
6 Floor 1 - Bath



Max Dimensions: 6'0" x 9'1"
Calculated Area: 55 sq. ft
Included: Yes

Heated: Yes
Finished: Yes
Enclosed: Yes
Contiguous: Yes
Permitted: Yes
Wet space: Yes
Addition: No
Conversion: No

7 Floor 1 - Yard



Max Dimensions: 19'11" x
31'1"
Calculated Area: 121 sq. ft
Included: No

Heated: No
Finished: No
Enclosed: No
Contiguous:
Yes
Permitted: No
Wet space: No
Addition: No
Conversion: No

8 Floor 1 - Bedroom



Max Dimensions: 12'6" x
12'10"
Calculated Area: 160 sq. ft
Included: Yes

Heated: Yes
Finished: Yes
Enclosed: Yes
Contiguous:
Yes
Permitted: Yes
Wet space: No
Addition: No
Conversion: No

5692 Hunt Camp Road, Southern Pines, Cave Spring, Roanoke,
Roanoke County, Virginia, United States, 24018

9 Floor 1 - Yard



Max Dimensions: 3'0" x 8'8"
Calculated Area: 25 sq. ft
Included: No

Heated: No
Finished: No
Enclosed: No
Contiguous: Yes
Permitted: No
Wet space: No
Addition: No
Conversion: No

10 Floor 1 - Family Room



Max Dimensions: 22'7" x 21'6"
Calculated Area: 485 sq. ft
Included: Yes

Heated: Yes
Finished: Yes
Enclosed: Yes
Contiguous: Yes
Permitted: Yes
Wet space: No
Addition: No
Conversion: No

11 Floor 1 - Living Room



Max Dimensions: 14'4" x 10'4"
Calculated Area: 148 sq. ft
Included: Yes

Heated: Yes
Finished: Yes
Enclosed: Yes
Contiguous: Yes
Permitted: Yes
Wet space: No
Addition: No
Conversion: No

5692 Hunt Camp Road, Southern Pines, Cave Spring, Roanoke,
Roanoke County, Virginia, United States, 24018

12 Floor 1 - W.I.C.



Max Dimensions: 3'8" x 5'7"
Calculated Area: 20 sq. ft
Included: Yes

Heated: Yes
Finished: Yes
Enclosed: Yes
Contiguous: Yes
Permitted: Yes
Wet space: No
Addition: No
Conversion: No

13 Floor 1 - Hall



Max Dimensions: 10'1" x 17'1"
Calculated Area: 117 sq. ft
Included: Yes

Heated: Yes
Finished: Yes
Enclosed: Yes
Contiguous: Yes
Permitted: Yes
Wet space: No
Addition: No
Conversion: No

14 Floor 1 - W.I.C.



Max Dimensions: 13'0" x 9'6"
Calculated Area: 123 sq. ft
Included: Yes

Heated: Yes
Finished: Yes
Enclosed: Yes
Contiguous: Yes
Permitted: Yes
Wet space: No
Addition: No
Conversion: No

15 Floor 1 - Primary Bath



Max Dimensions: 18'5" x 14'10"
Calculated Area: 215 sq. ft
Included: Yes

Heated: Yes
Finished: Yes
Enclosed: Yes
Contiguous: Yes
Permitted: Yes
Wet space: Yes
Addition: No
Conversion: No

16 Floor 1 - Bedroom



Max Dimensions: 11'8" x 15'1"
Calculated Area: 175 sq. ft
Included: Yes

Heated: Yes
Finished: Yes
Enclosed: Yes
Contiguous: Yes
Permitted: Yes
Wet space: No
Addition: No
Conversion: No

17 Floor 1 - Pantry



Max Dimensions: 5'11" x 8'0"
Calculated Area: 47 sq. ft
Included: Yes

Heated: Yes
Finished: Yes
Enclosed: Yes
Contiguous: Yes
Permitted: Yes
Wet space: No
Addition: No
Conversion: No

18 Floor 1 - Yard



Max Dimensions: 3'0" x 7'7"
Calculated Area: 23 sq. ft
Included: No

Heated: No
Finished: No
Enclosed: No
Contiguous: Yes
Permitted: No
Wet space: No
Addition: No
Conversion: No

19 Floor 1 - Bath



Max Dimensions: 6'1" x 11'2"
Calculated Area: 67 sq. ft
Included: Yes

Heated: Yes
Finished: Yes
Enclosed: Yes
Contiguous: Yes
Permitted: Yes
Wet space: Yes
Addition: No
Conversion: No

20 Floor 1 - WC



Max Dimensions: 5'3" x 7'11"
Calculated Area: 42 sq. ft
Included: Yes

Heated: Yes
Finished: Yes
Enclosed: Yes
Contiguous: Yes
Permitted: Yes
Wet space: Yes
Addition: No
Conversion: No

5692 Hunt Camp Road, Southern Pines, Cave Spring, Roanoke,
Roanoke County, Virginia, United States, 24018

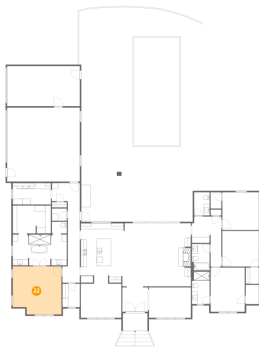
21 Floor 1 - Laundry



Max Dimensions: 13'0" x 7'4"
Calculated Area: 96 sq. ft
Included: Yes

Heated: Yes
Finished: Yes
Enclosed: Yes
Contiguous: Yes
Permitted: Yes
Wet space: No
Addition: No
Conversion: No

22 Floor 1 - Bedroom



Max Dimensions: 16'7" x 16'4"
Calculated Area: 260 sq. ft
Included: Yes

Heated: Yes
Finished: Yes
Enclosed: Yes
Contiguous: Yes
Permitted: Yes
Wet space: No
Addition: No
Conversion: No

23 Floor 1 - W.I.C.



Max Dimensions: 4'6" x 6'7"
Calculated Area: 30 sq. ft
Included: Yes

Heated: Yes
Finished: Yes
Enclosed: Yes
Contiguous: Yes
Permitted: Yes
Wet space: No
Addition: No
Conversion: No

24 Floor 1 - Hall



Max Dimensions: 9'6" x 34'0"
Calculated Area: 183 sq. ft
Included: Yes

Heated: Yes
Finished: Yes
Enclosed: Yes
Contiguous: Yes
Permitted: Yes
Wet space: No
Addition: No
Conversion: No

25 Floor 1 - Foyer



Max Dimensions: 8'9" x 8'8"
Calculated Area: 74 sq. ft
Included: Yes

Heated: Yes
Finished: Yes
Enclosed: Yes
Contiguous: Yes
Permitted: Yes
Wet space: No
Addition: No
Conversion: No

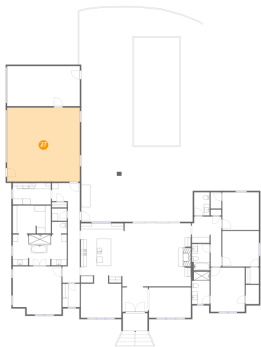
26 Floor 1 - Bedroom



Max Dimensions: 12'6" x 12'2"
Calculated Area: 151 sq. ft
Included: Yes

Heated: Yes
Finished: Yes
Enclosed: Yes
Contiguous: Yes
Permitted: Yes
Wet space: No
Addition: No
Conversion: No

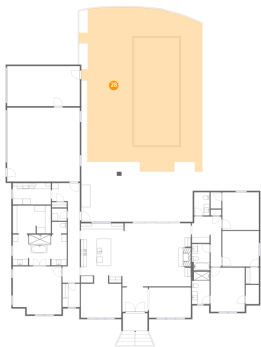
27 Floor 1 - Garage



Max Dimensions: 24'10" x 25'2"
Calculated Area: 625 sq. ft
Included: No

Heated: No
Finished: No
Enclosed: Yes
Contiguous: Yes
Permitted: Yes
Wet space: No
Addition: No
Conversion: No

28 Floor 1 - Patio



Max Dimensions: 42'1" x 52'8"
Calculated Area: 2090 sq. ft
Included: No

Heated: No
Finished: Yes
Enclosed: No
Contiguous: Yes
Permitted: Yes
Wet space: No
Addition: No
Conversion: No

29 Floor 1 - Porch



Max Dimensions: 8'5" x 6'0"
Calculated Area: 106 sq. ft
Included: No

Heated: No
Finished: Yes
Enclosed: No
Contiguous: Yes
Permitted: Yes
Wet space: No
Addition: No
Conversion: No

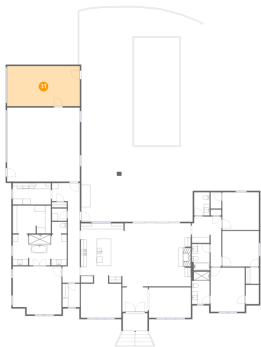
30 Floor 1 - Yard



Max Dimensions: 6'11" x 3'3"
Calculated Area: 23 sq. ft
Included: No

Heated: No
Finished: No
Enclosed: No
Contiguous: Yes
Permitted: No
Wet space: No
Addition: No
Conversion: No

31 Floor 1 - Garage



Max Dimensions: 24'10" x 13'8"
Calculated Area: 339 sq. ft
Included: No

Heated: No
Finished: No
Enclosed: Yes
Contiguous: Yes
Permitted: Yes
Wet space: No
Addition: No
Conversion: No