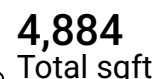
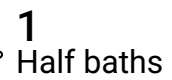
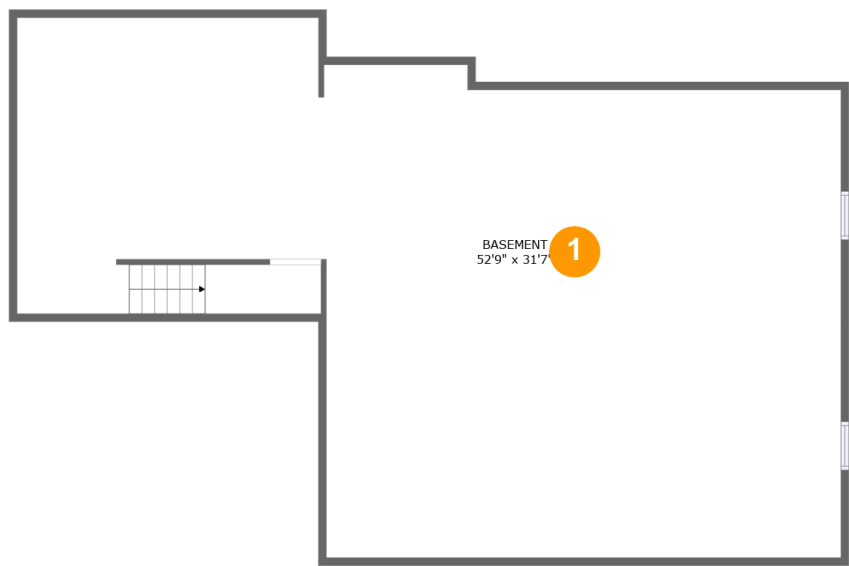


109 Knoll Drive, Upper Providence Township, Collegeville,
Montgomery County, Pennsylvania, United States, 19426



Home report

109 Knoll Drive, Upper Providence Township, Collegeville,
Montgomery County, Pennsylvania, United States, 19426



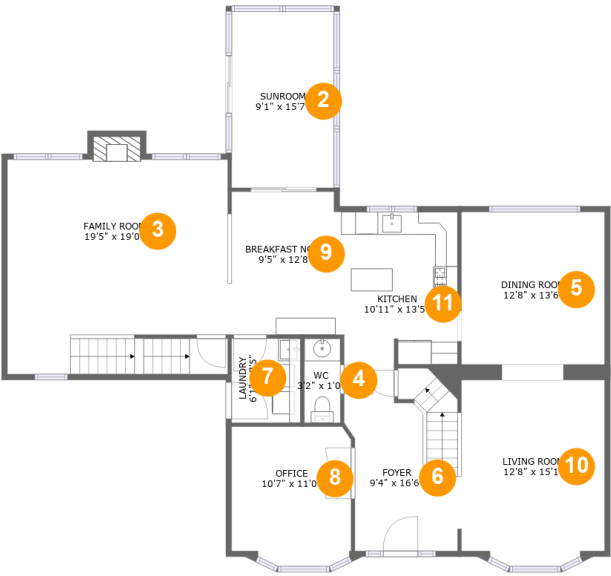
Room dimensions

Floor 1 Total sqft: 1465 Living area: 0

#		Max Dimensions	sqft	Included
1	Basement	52'9" x 31'7"	1370 sq. ft	No

Home report

109 Knoll Drive, Upper Providence Township, Collegeville,
Montgomery County, Pennsylvania, United States, 19426



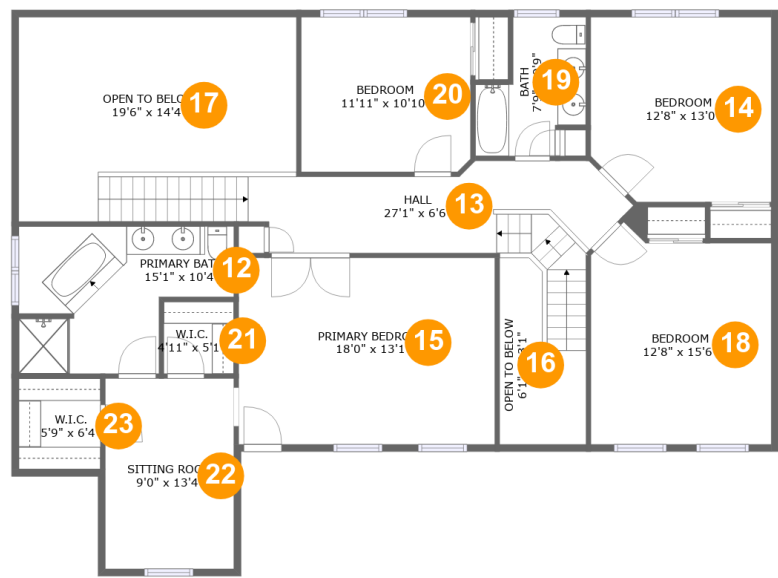
Room dimensions

Floor 2Total sqft: 1656 Living area: 1625

#		Max Dimensions	sqft	Included
2	Sunroom	9'1" x 15'7"	141 sq. ft	Yes
3	Family Room	19'5" x 19'0"	375 sq. ft	Yes
4	WC	3'2" x 1'0"	24 sq. ft	Yes
5	Dining Room	12'8" x 13'6"	171 sq. ft	Yes
6	Foyer	9'4" x 16'6"	155 sq. ft	Yes
7	Laundry	6'1" x 7'5"	45 sq. ft	Yes
8	Office	10'7" x 11'0"	116 sq. ft	Yes
9	Breakfast Nook	9'5" x 12'8"	118 sq. ft	Yes
10	Living Room	12'8" x 15'1"	191 sq. ft	Yes
11	Kitchen	10'11" x 13'5"	144 sq. ft	Yes

Home report

109 Knoll Drive, Upper Providence Township, Collegeville,
Montgomery County, Pennsylvania, United States, 19426



Room dimensions

Floor 3 Total sqft: 1763 Living area: 1453

#		Max Dimensions	sqft	Included
12	Primary Bath	15'1" x 10'4"	126 sq. ft	Yes
13	Hall	27'1" x 6'6"	204 sq. ft	Yes
14	Bedroom	12'8" x 13'0"	159 sq. ft	Yes
15	Primary Bedroom	18'0" x 13'1"	235 sq. ft	Yes
16	Open To Below	6'1" x 13'1"	59 sq. ft	No
17	Open To Below	19'6" x 14'4"	231 sq. ft	No
18	Bedroom	12'8" x 15'6"	180 sq. ft	Yes
19	Bath	7'9" x 9'9"	58 sq. ft	Yes
20	Bedroom	11'11" x 10'10"	128 sq. ft	Yes
21	W.I.C.	4'11" x 5'1"	25 sq. ft	Yes
22	Sitting Room	9'0" x 13'4"	120 sq. ft	Yes

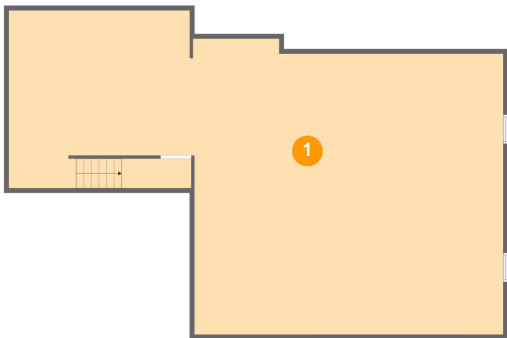
Home report

109 Knoll Drive, Upper Providence Township, Collegeville,
Montgomery County, Pennsylvania, United States, 19426

#		Max Dimensions	sqft	Included
23	W.I.C.	5'9" x 6'4"	37 sq. ft	Yes

109 Knoll Drive, Upper Providence Township, Collegeville,
Montgomery County, Pennsylvania, United States, 19426

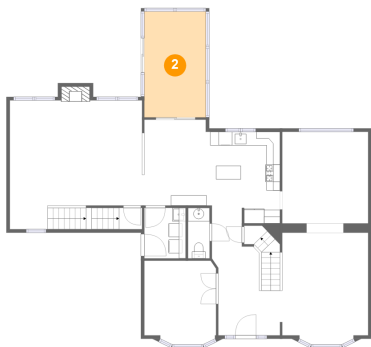
1 Floor 1 - Basement



Max Dimensions: 52'9" x 31'7"
Calculated Area: 1370 sq. ft
Included: No

Heated: No
Finished: No
Enclosed: Yes
Contiguous: Yes
Permitted: Yes
Wet space: No
Addition: No
Conversion: No

2 Floor 2 - Sunroom



Max Dimensions: 9'1" x 15'7"
Calculated Area: 141 sq. ft
Included: Yes

Heated: Yes
Finished: Yes
Enclosed: Yes
Contiguous: Yes
Permitted: Yes
Wet space: No
Addition: No
Conversion: No

109 Knoll Drive, Upper Providence Township, Collegeville,
Montgomery County, Pennsylvania, United States, 19426

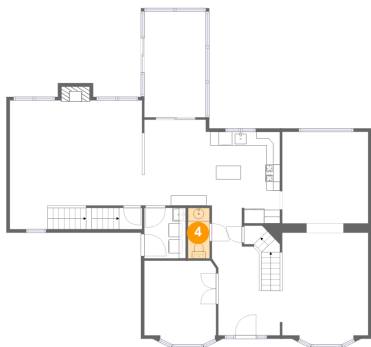
3 Floor 2 - Family Room



Max Dimensions: 19'5" x 19'0"
Calculated Area: 375 sq. ft
Included: Yes

Heated: Yes
Finished: Yes
Enclosed: Yes
Contiguous: Yes
Permitted: Yes
Wet space: No
Addition: No
Conversion: No

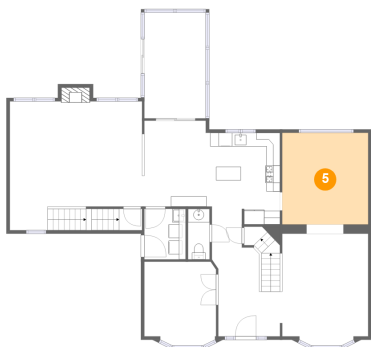
4 Floor 2 - WC



Max Dimensions: 3'2" x 1'0"
Calculated Area: 24 sq. ft
Included: Yes

Heated: Yes
Finished: Yes
Enclosed: Yes
Contiguous: Yes
Permitted: Yes
Wet space: Yes
Addition: No
Conversion: No

5 Floor 2 - Dining Room



Max Dimensions: 12'8" x 13'6"
Calculated Area: 171 sq. ft
Included: Yes

Heated: Yes
Finished: Yes
Enclosed: Yes
Contiguous: Yes
Permitted: Yes
Wet space: No
Addition: No
Conversion: No

109 Knoll Drive, Upper Providence Township, Collegeville,
Montgomery County, Pennsylvania, United States, 19426

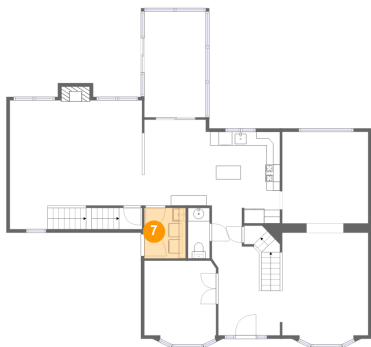
6 Floor 2 - Foyer



Max Dimensions: 9'4" x 16'6"
Calculated Area: 155 sq. ft
Included: Yes

Heated: Yes
Finished: Yes
Enclosed: Yes
Contiguous: Yes
Permitted: Yes
Wet space: No
Addition: No
Conversion: No

7 Floor 2 - Laundry



Max Dimensions: 6'1" x 7'5"
Calculated Area: 45 sq. ft
Included: Yes

Heated: Yes
Finished: Yes
Enclosed: Yes
Contiguous: Yes
Permitted: Yes
Wet space: No
Addition: No
Conversion: No

8 Floor 2 - Office



Max Dimensions: 10'7" x 11'0"
Calculated Area: 116 sq. ft
Included: Yes

Heated: Yes
Finished: Yes
Enclosed: Yes
Contiguous: Yes
Permitted: Yes
Wet space: No
Addition: No
Conversion: No

9 Floor 2 - Breakfast Nook



Max Dimensions: 9'5" x 12'8"
Calculated Area: 118 sq. ft
Included: Yes

Heated: Yes
Finished: Yes
Enclosed: Yes
Contiguous: Yes
Permitted: Yes
Wet space: No
Addition: No
Conversion: No

10 Floor 2 - Living Room



Max Dimensions: 12'8" x 15'1"
Calculated Area: 191 sq. ft
Included: Yes

Heated: Yes
Finished: Yes
Enclosed: Yes
Contiguous: Yes
Permitted: Yes
Wet space: No
Addition: No
Conversion: No

11 Floor 2 - Kitchen



Max Dimensions: 10'11" x 13'5"
Calculated Area: 144 sq. ft
Included: Yes

Heated: Yes
Finished: Yes
Enclosed: Yes
Contiguous: Yes
Permitted: Yes
Wet space: No
Addition: No
Conversion: No

109 Knoll Drive, Upper Providence Township, Collegeville,
Montgomery County, Pennsylvania, United States, 19426

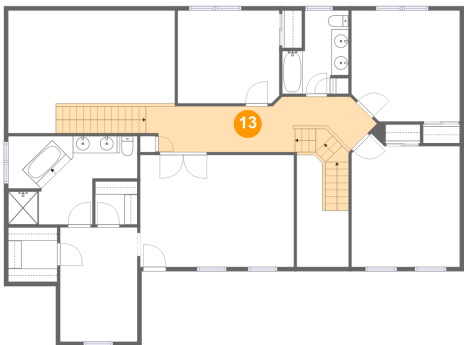
12 Floor 3 - Primary Bath



Max Dimensions: 15'1" x 10'4"
Calculated Area: 126 sq. ft
Included: Yes

Heated: Yes
Finished: Yes
Enclosed: Yes
Contiguous: Yes
Permitted: Yes
Wet space: Yes
Addition: No
Conversion: No

13 Floor 3 - Hall



Max Dimensions: 27'1" x 6'6"
Calculated Area: 204 sq. ft
Included: Yes

Heated: Yes
Finished: Yes
Enclosed: Yes
Contiguous: Yes
Permitted: Yes
Wet space: No
Addition: No
Conversion: No

14 Floor 3 - Bedroom



Max Dimensions: 12'8" x 13'0"
Calculated Area: 159 sq. ft
Included: Yes

Heated: Yes
Finished: Yes
Enclosed: Yes
Contiguous: Yes
Permitted: Yes
Wet space: No
Addition: No
Conversion: No

109 Knoll Drive, Upper Providence Township, Collegeville,
Montgomery County, Pennsylvania, United States, 19426

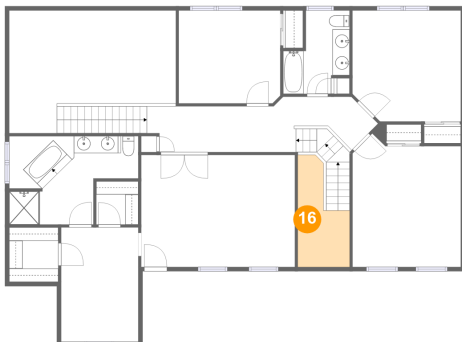
15 Floor 3 - Primary Bedroom



Max Dimensions: 18'0" x 13'1"
Calculated Area: 235 sq. ft
Included: Yes

Heated: Yes
Finished: Yes
Enclosed: Yes
Contiguous: Yes
Permitted: Yes
Wet space: No
Addition: No
Conversion: No

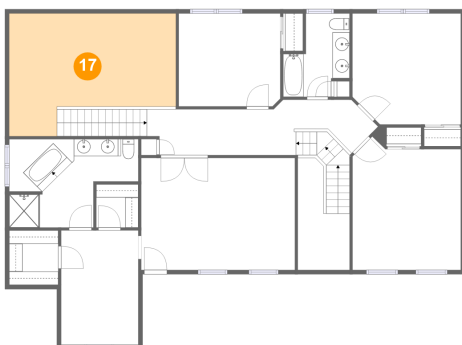
16 Floor 3 - Open To Below



Max Dimensions: 6'1" x 13'1"
Calculated Area: 59 sq. ft
Included: No

Heated: No
Finished: No
Enclosed: No
Contiguous: Yes
Permitted: No
Wet space: No
Addition: No
Conversion: No

17 Floor 3 - Open To Below

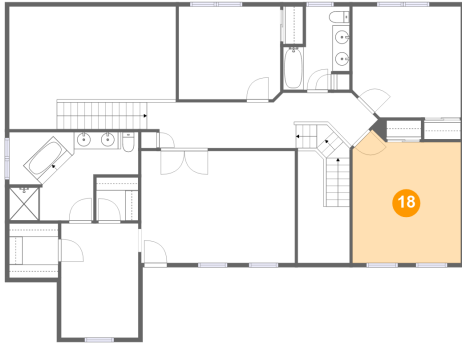


Max Dimensions: 19'6" x 14'4"
Calculated Area: 231 sq. ft
Included: No

Heated: No
Finished: No
Enclosed: No
Contiguous: Yes
Permitted: No
Wet space: No
Addition: No
Conversion: No

109 Knoll Drive, Upper Providence Township, Collegeville,
Montgomery County, Pennsylvania, United States, 19426

18 Floor 3 - Bedroom



Max Dimensions: 12'8" x 15'6"
Calculated Area: 180 sq. ft
Included: Yes

Heated: Yes
Finished: Yes
Enclosed: Yes
Contiguous: Yes
Permitted: Yes
Wet space: No
Addition: No
Conversion: No

19 Floor 3 - Bath



Max Dimensions: 7'9" x 9'9"
Calculated Area: 58 sq. ft
Included: Yes

Heated: Yes
Finished: Yes
Enclosed: Yes
Contiguous: Yes
Permitted: Yes
Wet space: Yes
Addition: No
Conversion: No

20 Floor 3 - Bedroom

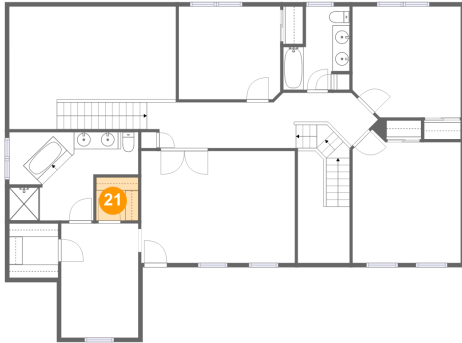


Max Dimensions: 11'11" x 10'10"
Calculated Area: 128 sq. ft
Included: Yes

Heated: Yes
Finished: Yes
Enclosed: Yes
Contiguous: Yes
Permitted: Yes
Wet space: No
Addition: No
Conversion: No

109 Knoll Drive, Upper Providence Township, Collegeville,
Montgomery County, Pennsylvania, United States, 19426

21 Floor 3 - W.I.C.



Max Dimensions: 4'11" x 5'1"
Calculated Area: 25 sq. ft
Included: Yes

Heated: Yes
Finished: Yes
Enclosed: Yes
Contiguous: Yes
Permitted: Yes
Wet space: No
Addition: No
Conversion: No

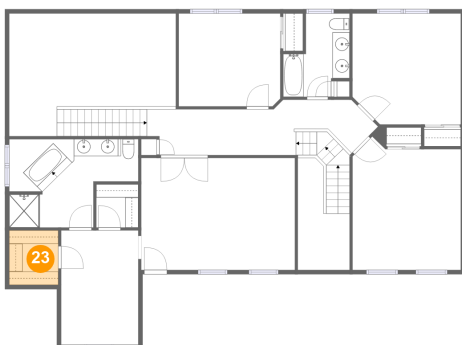
22 Floor 3 - Sitting Room



Max Dimensions: 9'0" x 13'4"
Calculated Area: 120 sq. ft
Included: Yes

Heated: Yes
Finished: Yes
Enclosed: Yes
Contiguous: Yes
Permitted: Yes
Wet space: No
Addition: No
Conversion: No

23 Floor 3 - W.I.C.



Max Dimensions: 5'9" x 6'4"
Calculated Area: 37 sq. ft
Included: Yes

Heated: Yes
Finished: Yes
Enclosed: Yes
Contiguous: Yes
Permitted: Yes
Wet space: No
Addition: No
Conversion: No