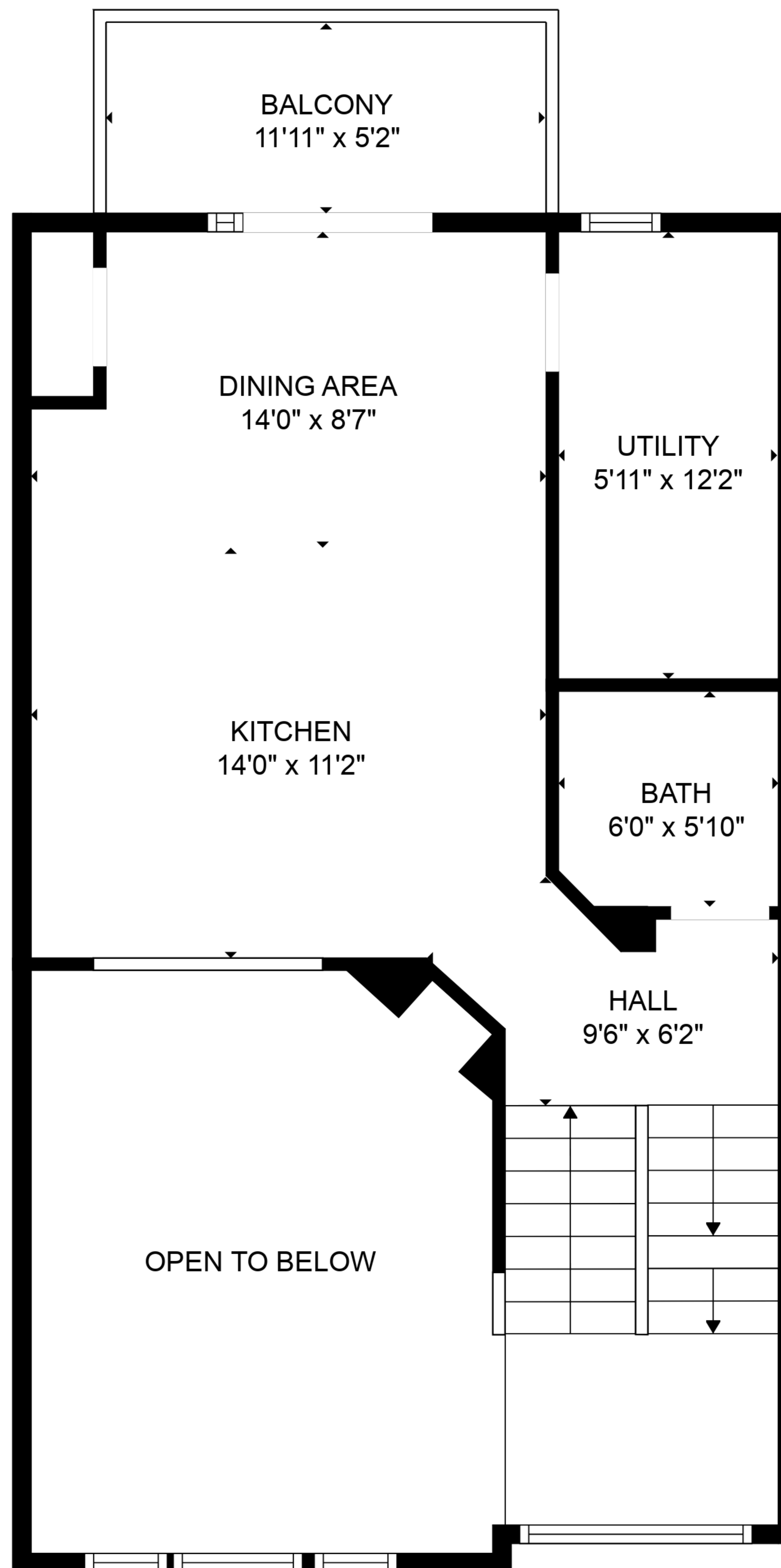
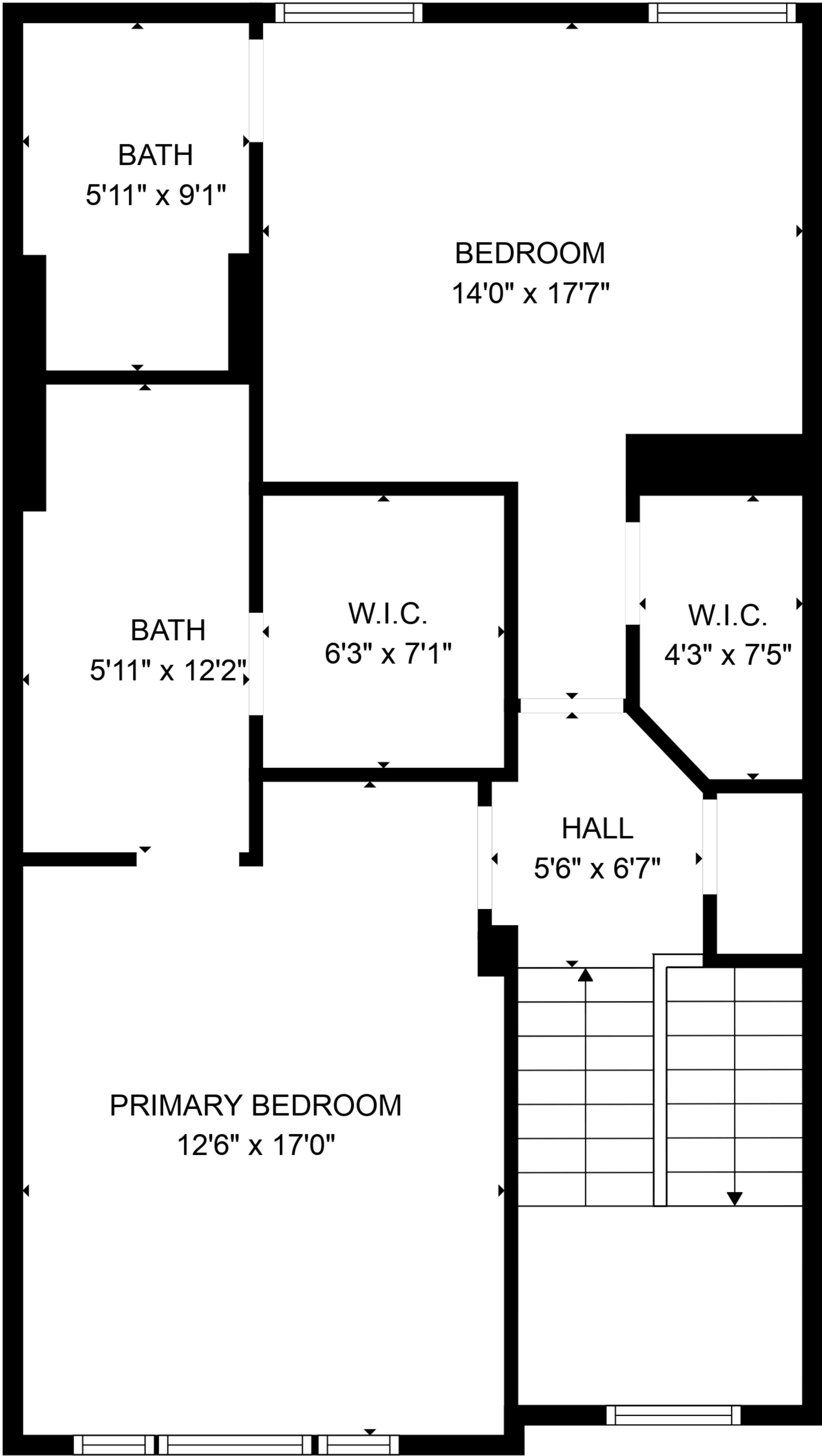


LIVING ROOM
12'6" x 15'10"

FOYER
7'9" x 5'2"



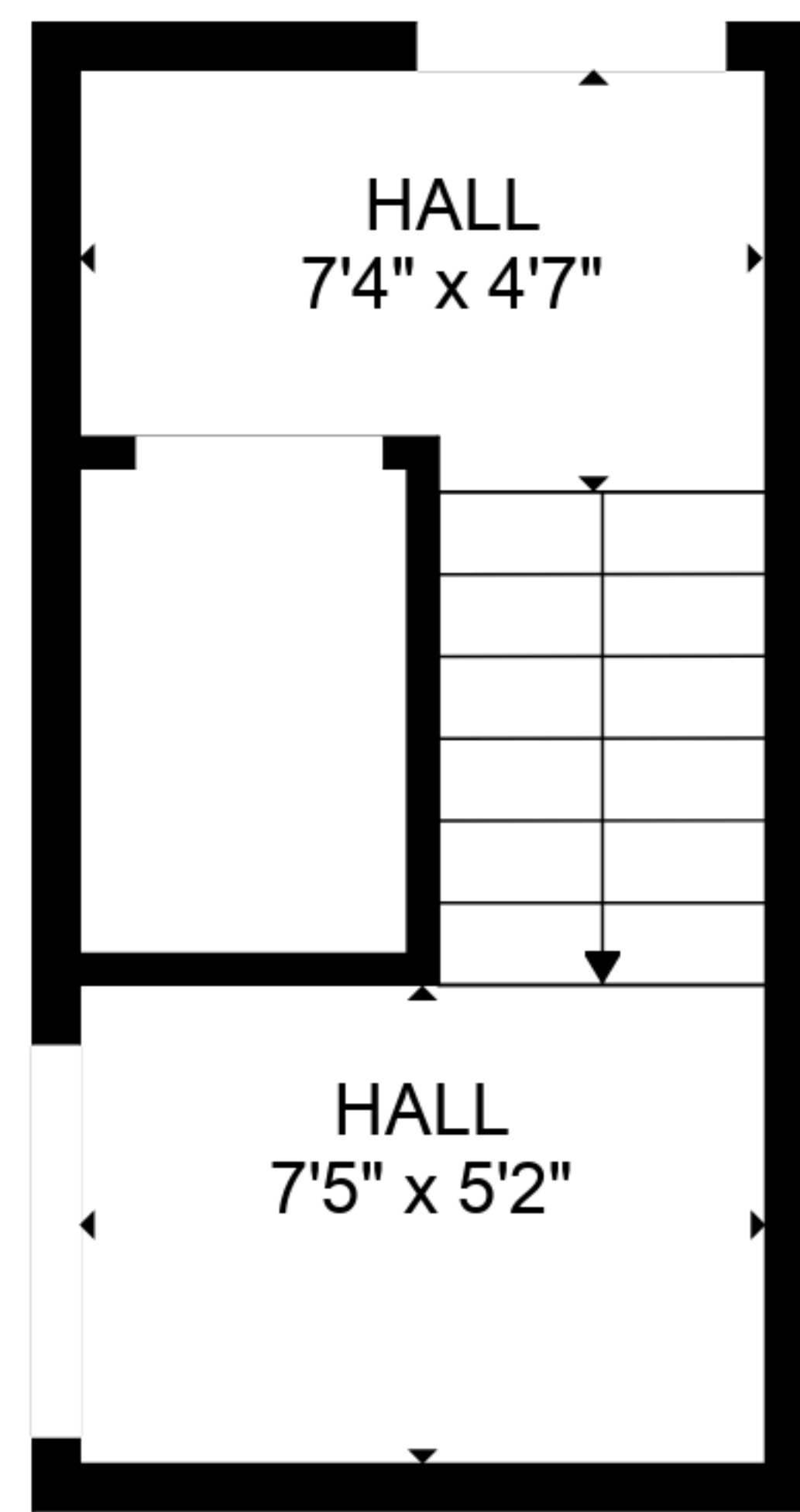


TOTAL: 1651 sq. ft

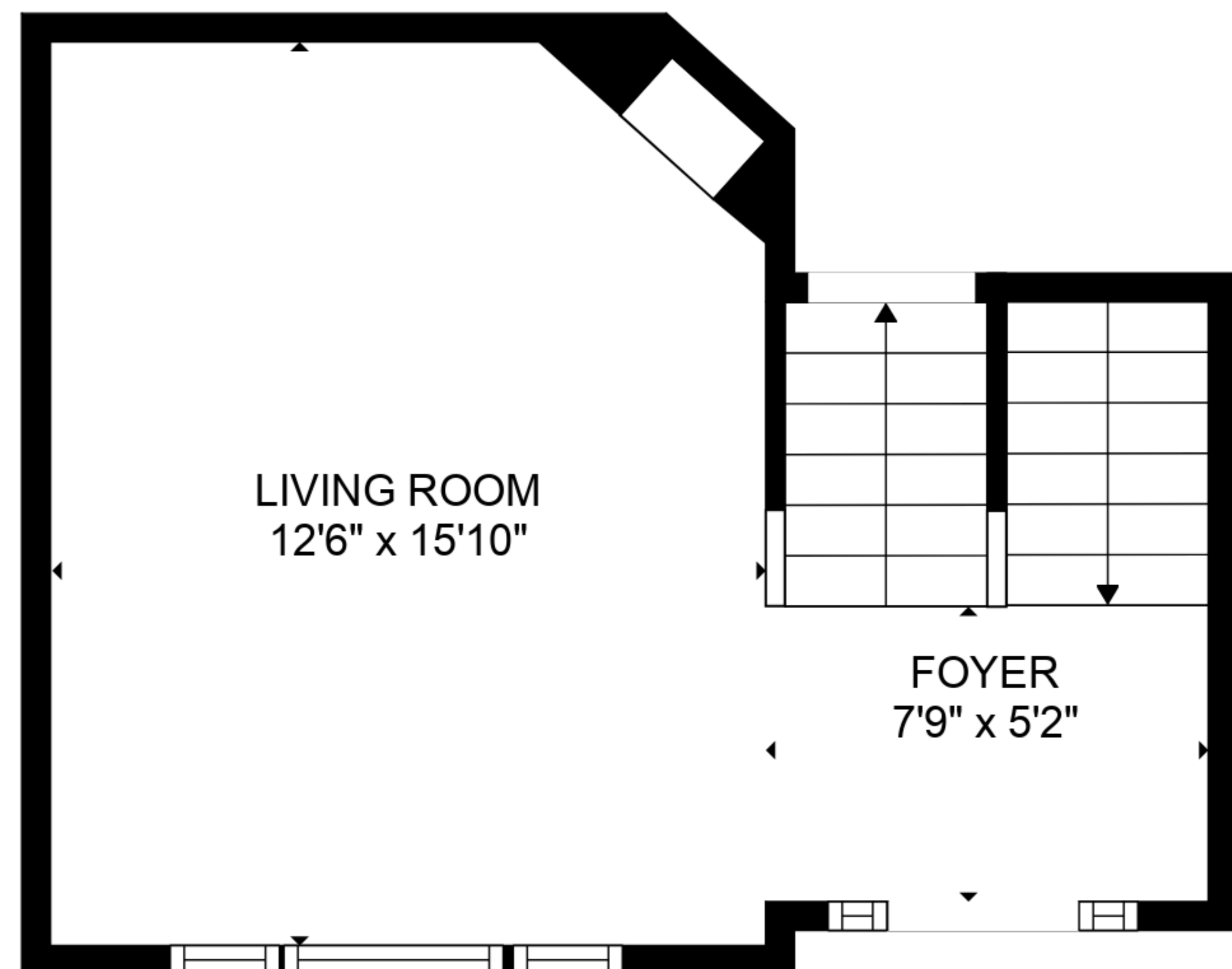
BELOW GROUND: 111 sq. ft, FLOOR 2: 278 sq. ft, FLOOR 3: 523 sq. ft, FLOOR 4: 739 sq. ft
 EXCLUDED AREAS: BALCONY: 62 sq. ft, OPEN TO BELOW: 198 sq. ft

SIZES AND DIMENSIONS ARE APPROXIMATE, ACTUAL MAY VARY.

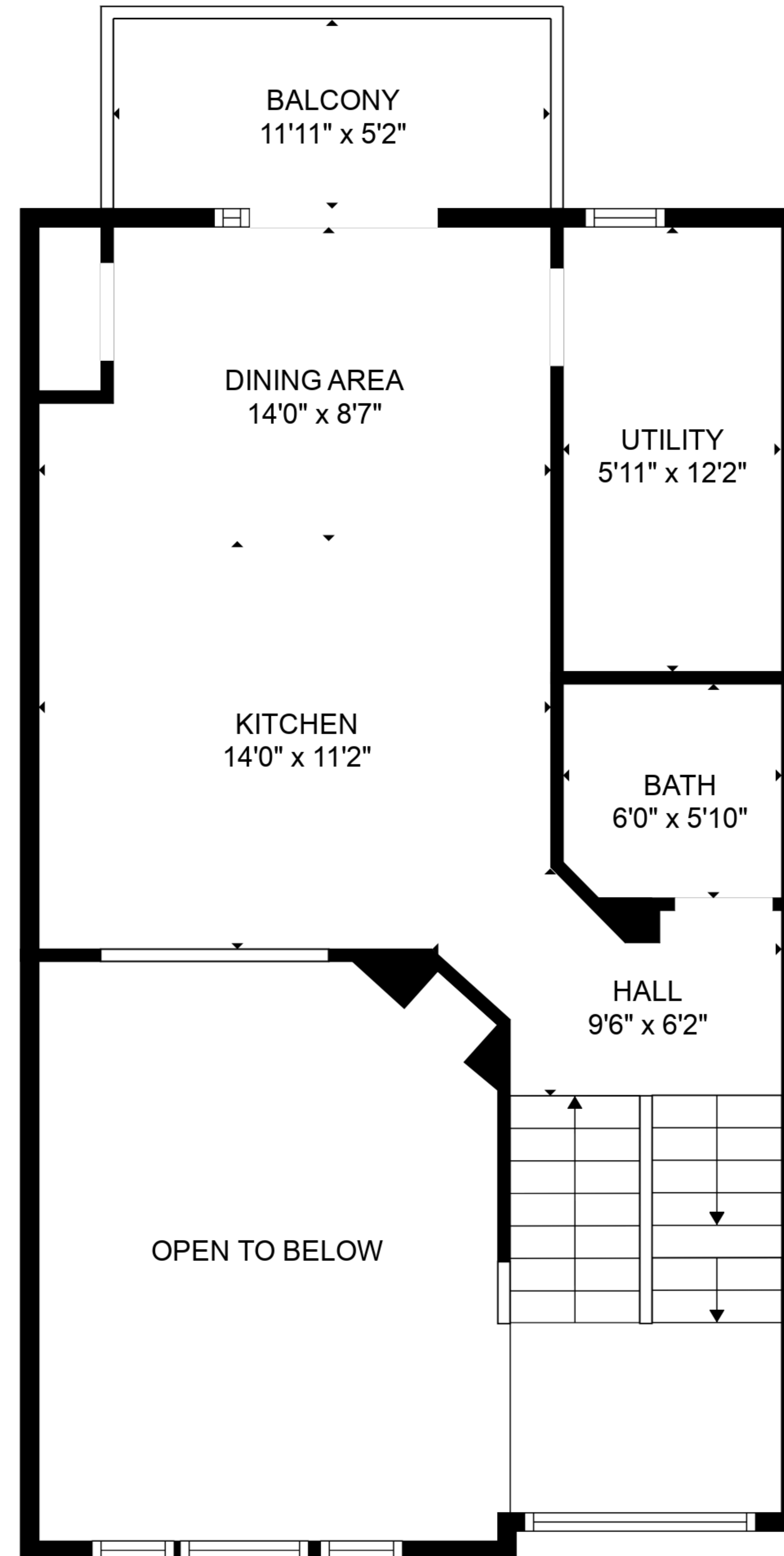




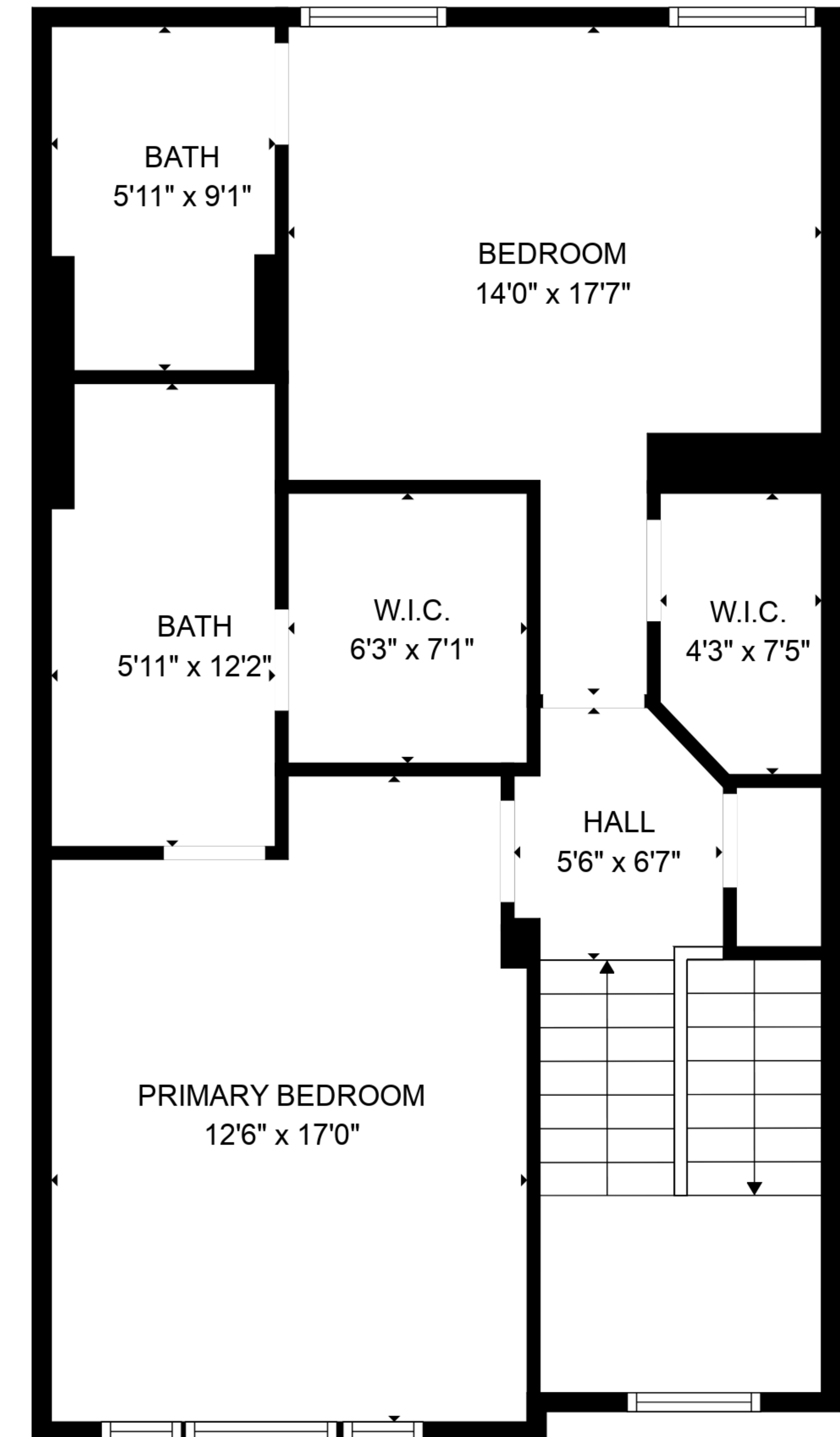
FLOOR 1



FLOOR 2



FLOOR 3



FLOOR 4