

Home report

1047 SE Main St,Roseburg,OR,US



**Total Area: 5217 sq. ft**

Below Ground: 2001 sq. ft, Floor 2: 1594 sq. ft, Floor 3: 1622 sq. ft

Excluded: Deck 361 sq. ft, Walls: 271 sq. ft

Property summary

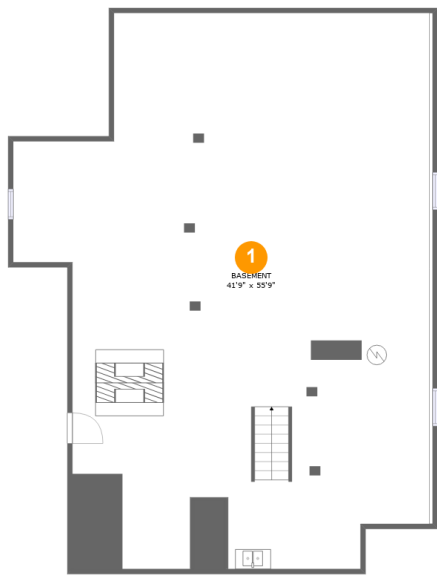
 **3** Floors

 **5** Bedrooms

 **1** Bathrooms

Home report

1047 SE Main St,Roseburg,OR,US



Room dimensions

Floor 1 Below ground Total:2001sqft Excluded: 0sqft

#		Max Dimensions	sqft	Included
1	Basement	41'9" x 55'9"	1973 sq. ft	Yes

Home report

1047 SE Main St,Roseburg,OR,US



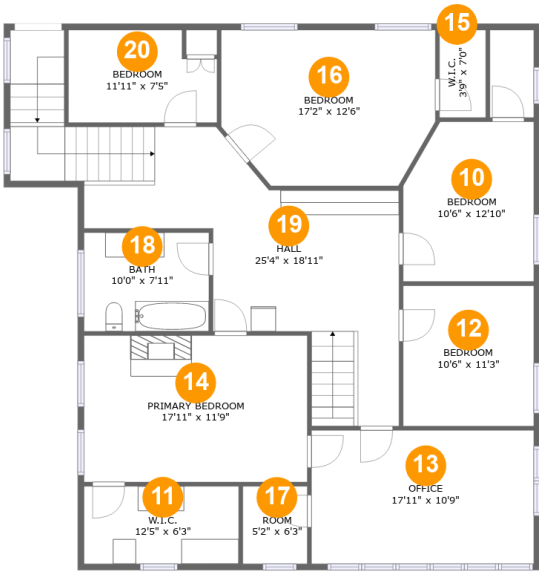
Room dimensions

Floor 2 Total:1594sqft    Excluded: 361sqft

#		Max Dimensions	sqft	Included
2	Hall	4'1" x 13'5"	54 sq. ft	Yes
3	Entry	17'11" x 12'6"	228 sq. ft	Yes
4	Living Room	19'2" x 21'7"	413 sq. ft	Yes
5	Family Room	17'11" x 16'3"	292 sq. ft	Yes
6	Sitting Room	12'3" x 13'5"	165 sq. ft	Yes
7	Foyer	7'5" x 8'5"	62 sq. ft	Yes
8	Deck	33'2" x 12'0"	361 sq. ft	No
9	Kitchen	19'2" x 21'0"	284 sq. ft	Yes

Home report

1047 SE Main St,Roseburg,OR,US

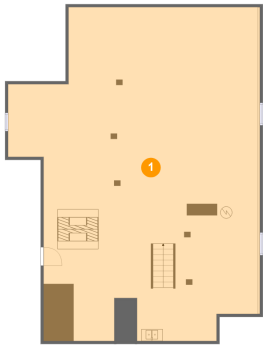


Room dimensions

Floor 3 Total:1622sqft Excluded: 0sqft

#		Max Dimensions	sqft	Included
10	Bedroom	10'6" x 12'10"	127 sq. ft	Yes
11	W.I.C.	12'5" x 6'3"	77 sq. ft	Yes
12	Bedroom	10'6" x 11'3"	118 sq. ft	Yes
13	Office	17'11" x 10'9"	192 sq. ft	Yes
14	Primary Bedroom	17'11" x 11'9"	211 sq. ft	Yes
15	W.I.C.	3'9" x 7'0"	26 sq. ft	Yes
16	Bedroom	17'2" x 12'6"	198 sq. ft	Yes
17	Room	5'2" x 6'3"	32 sq. ft	Yes
18	Bath	10'0" x 7'11"	80 sq. ft	Yes
19	Hall	25'4" x 18'11"	380 sq. ft	Yes
20	Bedroom	11'11" x 7'5"	82 sq. ft	Yes

1 Floor 1 - Basement



Max Dimensions: 41'9" x 55'9"  
Calculated Area: 1973 sq. ft  
Included: No

Heated: Yes  
Finished: Yes  
Enclosed: Yes  
Contiguous: No  
Permitted: Yes  
Wet space: No  
Addition: No  
Conversion: No

2 Floor 2 - Hall



Max Dimensions: 4'1" x 13'5"  
Calculated Area: 54 sq. ft  
Included: Yes

Heated: Yes  
Finished: Yes  
Enclosed: Yes  
Contiguous: Yes  
Permitted: Yes  
Wet space: No  
Addition: No  
Conversion: No

3 Floor 2 - Entry



Max Dimensions: 17'11" x 12'6"  
Calculated Area: 228 sq. ft  
Included: Yes

Heated: Yes  
Finished: Yes  
Enclosed: Yes  
Contiguous: Yes  
Permitted: Yes  
Wet space: No  
Addition: No  
Conversion: No

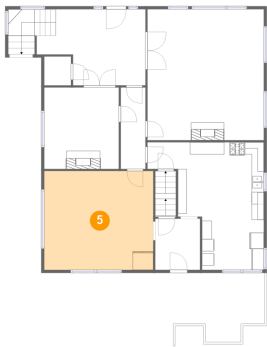
4 Floor 2 - Living Room



Max Dimensions: 19'2" x 21'7"  
Calculated Area: 413 sq. ft  
Included: Yes

Heated: Yes  
Finished: Yes  
Enclosed: Yes  
Contiguous: Yes  
Permitted: Yes  
Wet space: No  
Addition: No  
Conversion: No

5 Floor 2 - Family Room



Max Dimensions: 17'11" x 16'3"  
Calculated Area: 292 sq. ft  
Included: Yes

Heated: Yes  
Finished: Yes  
Enclosed: Yes  
Contiguous: Yes  
Permitted: Yes  
Wet space: No  
Addition: No  
Conversion: No

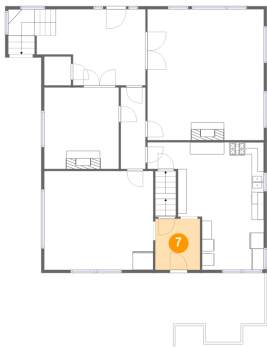
6 Floor 2 - Sitting Room



Max Dimensions: 12'3" x 13'5"  
Calculated Area: 165 sq. ft  
Included: Yes

Heated: Yes  
Finished: Yes  
Enclosed: Yes  
Contiguous: Yes  
Permitted: Yes  
Wet space: No  
Addition: No  
Conversion: No

7 Floor 2 - Foyer



Max Dimensions: 7'5" x 8'5"  
Calculated Area: 62 sq. ft  
Included: Yes

Heated: Yes  
Finished: Yes  
Enclosed: Yes  
Contiguous: Yes  
Permitted: Yes  
Wet space: No  
Addition: No  
Conversion: No

8 Floor 2 - Deck



Max Dimensions: 33'2" x 12'0"  
Calculated Area: 361 sq. ft  
Included: No

Heated: No  
Finished: Yes  
Enclosed: No  
Contiguous: Yes  
Permitted: Yes  
Wet space: No  
Addition: No  
Conversion: No

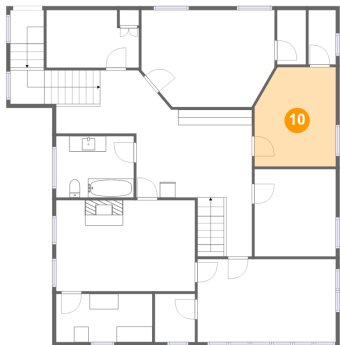
9 Floor 2 - Kitchen



Max Dimensions: 19'2" x 21'0"  
Calculated Area: 284 sq. ft  
Included: Yes

Heated: Yes  
Finished: Yes  
Enclosed: Yes  
Contiguous: Yes  
Permitted: Yes  
Wet space: No  
Addition: No  
Conversion: No

10 Floor 3 - Bedroom



Max Dimensions: 10'6" x 12'10"  
Calculated Area: 127 sq. ft  
Included: Yes

Heated: Yes  
Finished: Yes  
Enclosed: Yes  
Contiguous: Yes  
Permitted: Yes  
Wet space: No  
Addition: No  
Conversion: No

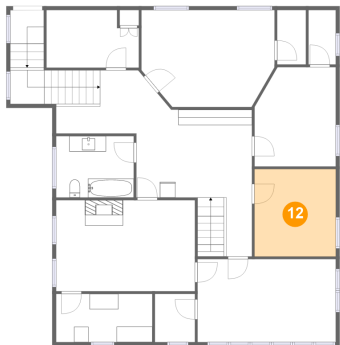
11 Floor 3 - W.I.C.



Max Dimensions: 12'5" x 6'3"  
Calculated Area: 77 sq. ft  
Included: Yes

Heated: Yes  
Finished: Yes  
Enclosed: Yes  
Contiguous: Yes  
Permitted: Yes  
Wet space: No  
Addition: No  
Conversion: No

12 Floor 3 - Bedroom



Max Dimensions: 10'6" x 11'3"  
Calculated Area: 118 sq. ft  
Included: Yes

Heated: Yes  
Finished: Yes  
Enclosed: Yes  
Contiguous: Yes  
Permitted: Yes  
Wet space: No  
Addition: No  
Conversion: No

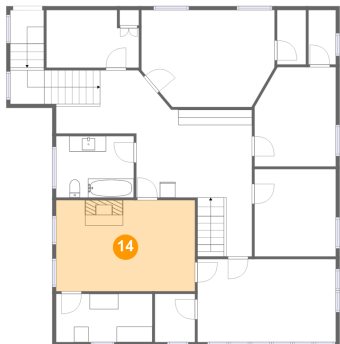
13 Floor 3 - Office



Max Dimensions: 17'11" x 10'9"  
Calculated Area: 192 sq. ft  
Included: Yes

Heated: Yes  
Finished: Yes  
Enclosed: Yes  
Contiguous: Yes  
Permitted: Yes  
Wet space: No  
Addition: No  
Conversion: No

14 Floor 3 - Primary Bedroom



Max Dimensions: 17'11" x 11'9"  
Calculated Area: 211 sq. ft  
Included: Yes

Heated: Yes  
Finished: Yes  
Enclosed: Yes  
Contiguous: Yes  
Permitted: Yes  
Wet space: No  
Addition: No  
Conversion: No

### 15 Floor 3 - W.I.C.



Max Dimensions: 3'9" x 7'0"  
Calculated Area: 26 sq. ft  
Included: Yes

Heated: Yes  
Finished: Yes  
Enclosed: Yes  
Contiguous: Yes  
Permitted: Yes  
Wet space: No  
Addition: No  
Conversion: No

### 16 Floor 3 - Bedroom



Max Dimensions: 17'2" x 12'6"  
Calculated Area: 198 sq. ft  
Included: Yes

Heated: Yes  
Finished: Yes  
Enclosed: Yes  
Contiguous: Yes  
Permitted: Yes  
Wet space: No  
Addition: No  
Conversion: No

### 17 Floor 3 - Room



Max Dimensions: 5'2" x 6'3"  
Calculated Area: 32 sq. ft  
Included: Yes

Heated: Yes  
Finished: Yes  
Enclosed: Yes  
Contiguous: Yes  
Permitted: Yes  
Wet space: No  
Addition: No  
Conversion: No

18 Floor 3 - Bath



Max Dimensions: 10'0" x 7'11"  
Calculated Area: 80 sq. ft  
Included: Yes

Heated: Yes  
Finished: Yes  
Enclosed: Yes  
Contiguous: Yes  
Permitted: Yes  
Wet space: Yes  
Addition: No  
Conversion: No

19 Floor 3 - Hall



Max Dimensions: 25'4" x 18'11"  
Calculated Area: 380 sq. ft  
Included: Yes

Heated: Yes  
Finished: Yes  
Enclosed: Yes  
Contiguous: Yes  
Permitted: Yes  
Wet space: No  
Addition: No  
Conversion: No

20 Floor 3 - Bedroom



Max Dimensions: 11'11" x 7'5"  
Calculated Area: 82 sq. ft  
Included: Yes

Heated: Yes  
Finished: Yes  
Enclosed: Yes  
Contiguous: Yes  
Permitted: Yes  
Wet space: No  
Addition: No  
Conversion: No