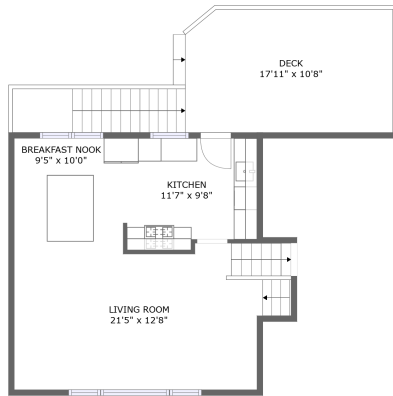
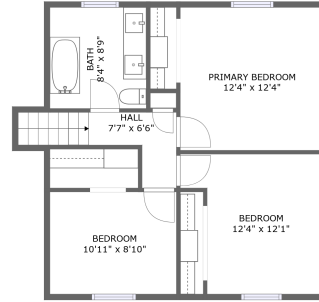


Home report

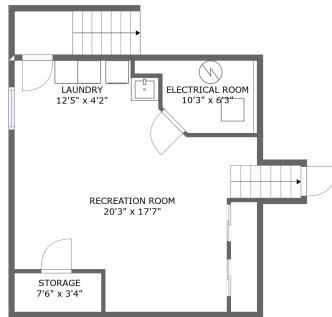
900 Hillside Street, Palatine, Cook County, Illinois,
United States, 60067



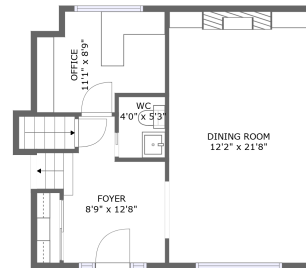
MAIN LEVEL



SECOND LEVEL



BASEMENT



FIRST LEVEL

Property summary

1 Garages

3 Bedrooms

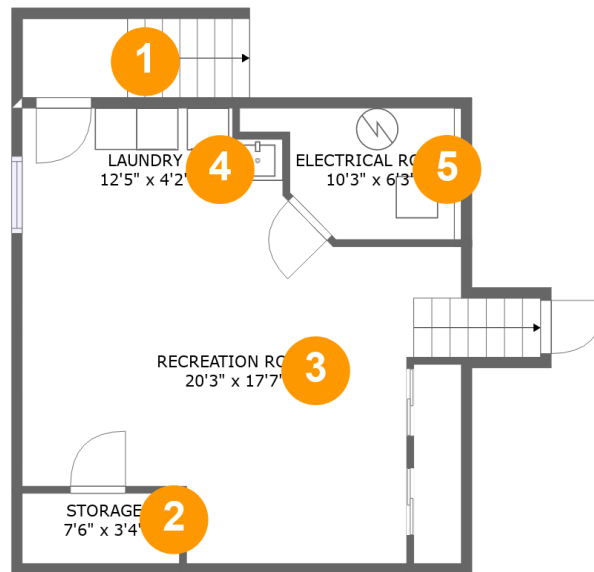
1 Bathrooms

1 Half baths

4 Floors

2,151 Gross living area sqft

2,520 Total sqft

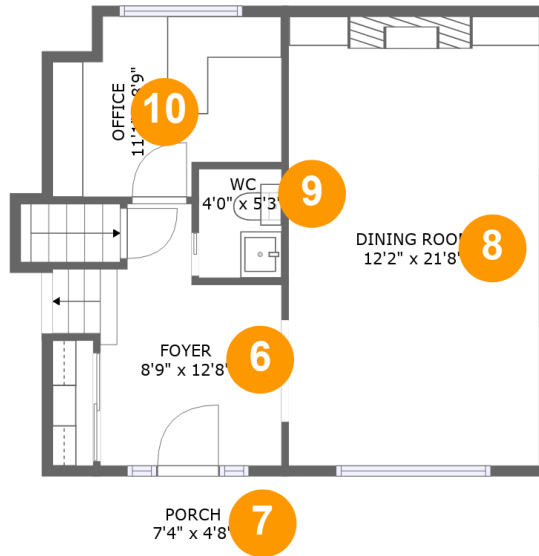


Room dimensions

Floor 1

Total sqft: 515 Living area: 424

#		Dimensions	sqft	Counted as living area
1	Outdoor	5'0" x 3'9"	19 sq. ft	No
2	Storage	7'6" x 3'4"	25 sq. ft	No
3	Recreation Room	20'3" x 17'7"	306 sq. ft	Yes
4	Laundry	12'5" x 4'2"	48 sq. ft	Yes
5	Electrical Room	10'3" x 6'3"	52 sq. ft	No

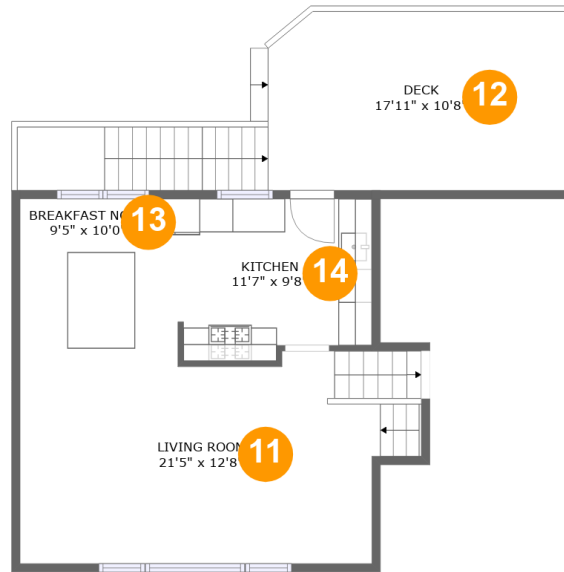


Room dimensions

Floor 2

Total sqft: 592 Living area: 558

#		Dimensions	sqft	Counted as living area
6	Foyer	8'9" x 12'8"	97 sq. ft	Yes
7	Porch	7'4" x 4'8"	34 sq. ft	No
8	Dining Room	12'2" x 21'8"	263 sq. ft	Yes
9	WC	4'0" x 5'3"	21 sq. ft	Yes
10	Office	11'1" x 8'9"	84 sq. ft	Yes

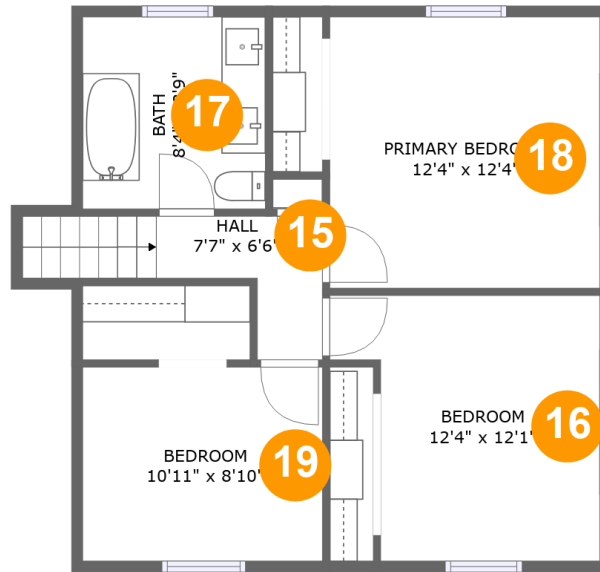


Room dimensions

Floor 3

Total sqft: 770 Living area: 526

#		Dimensions	sqft	Counted as living area
11	Living Room	21'5" x 12'8"	269 sq. ft	Yes
12	Deck	17'11" x 10'8"	244 sq. ft	No
13	Breakfast Nook	9'5" x 10'0"	94 sq. ft	Yes
14	Kitchen	11'7" x 9'8"	105 sq. ft	Yes



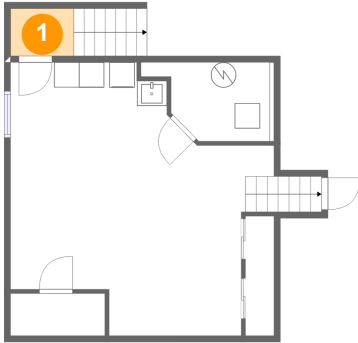
Room dimensions

Floor 4

Total sqft: 643 Living area: 643

#		Dimensions	sqft	Counted as living area
15	Hall	7'7" x 6'6"	50 sq. ft	Yes
16	Bedroom	12'4" x 12'1"	127 sq. ft	Yes
17	Bath	8'4" x 8'9"	73 sq. ft	Yes
18	Primary Bedroom	12'4" x 12'4"	152 sq. ft	Yes
19	Bedroom	10'11" x 8'10"	96 sq. ft	Yes

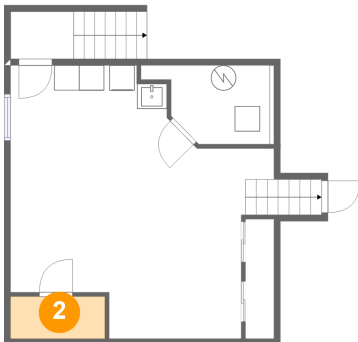
1 Floor 1 - Outdoor



Dimensions: 5'0" x 3'9"
Area: 19 sq. ft
Counted as living area: No

Heated: No
Finished: No
Enclosed: No
Contiguous: Yes
Permitted: No
Wet space: No
Addition: No
Conversion: No

2 Floor 1 - Storage



Dimensions: 7'6" x 3'4"
Area: 25 sq. ft
Counted as living area: No

Heated: No
Finished: No
Enclosed: No
Contiguous: Yes
Permitted: Yes
Wet space: No
Addition: No
Conversion: No

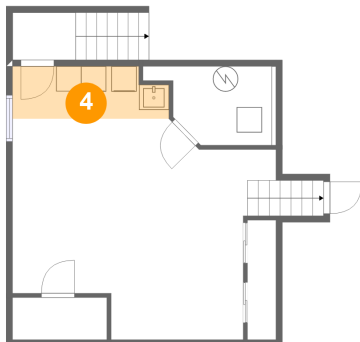
3 Floor 1 - Recreation Room



Dimensions: 20'3" x 17'7"
Area: 306 sq. ft
Counted as living area: Yes

Heated: Yes
Finished: Yes
Enclosed: Yes
Contiguous: Yes
Permitted: Yes
Wet space: No
Addition: No
Conversion: No

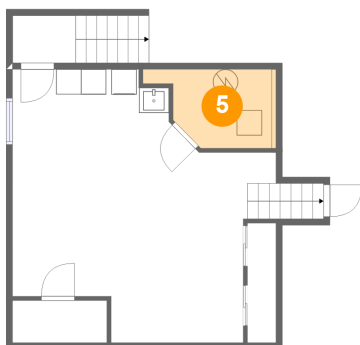
4 Floor 1 - Laundry



Dimensions: 12'5" x 4'2"
Area: 48 sq. ft
Counted as living area: Yes

Heated: Yes
Finished: Yes
Enclosed: Yes
Contiguous: Yes
Permitted: Yes
Wet space: No
Addition: No
Conversion: No

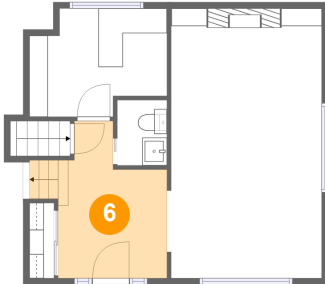
5 Floor 1 - Electrical Room



Dimensions: 10'3" x 6'3"
Area: 52 sq. ft
Counted as living area: No

Heated: No
Finished: No
Enclosed: Yes
Contiguous: Yes
Permitted: Yes
Wet space: No
Addition: No
Conversion: No

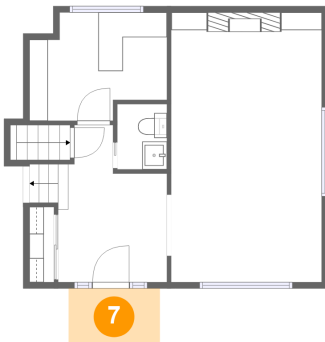
6 Floor 2 - Foyer



Dimensions: 8'9" x 12'8"
Area: 97 sq. ft
Counted as living area: Yes

Heated: Yes
Finished: Yes
Enclosed: Yes
Contiguous: Yes
Permitted: Yes
Wet space: No
Addition: No
Conversion: No

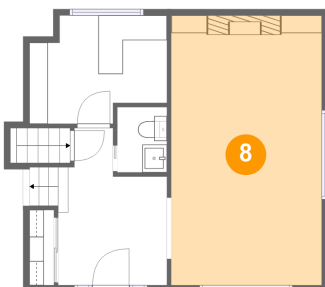
7 Floor 2 - Porch



Dimensions: 7'4" x 4'8"
Area: 34 sq. ft
Counted as living area: No

Heated: No
Finished: Yes
Enclosed: No
Contiguous: Yes
Permitted: Yes
Wet space: No
Addition: No
Conversion: No

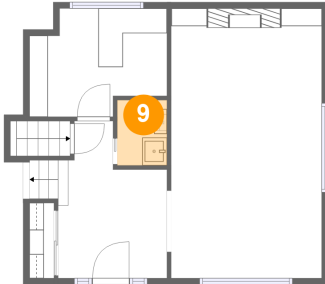
8 Floor 2 - Dining Room



Dimensions: 12'2" x 21'8"
Area: 263 sq. ft
Counted as living area: Yes

Heated: Yes
Finished: Yes
Enclosed: Yes
Contiguous: Yes
Permitted: Yes
Wet space: No
Addition: No
Conversion: No

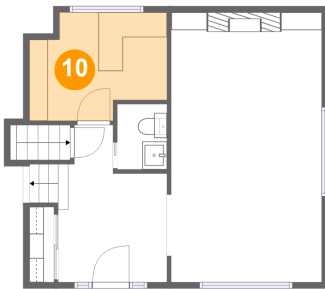
9 Floor 2 - WC



Dimensions: 4'0" x 5'3"
Area: 21 sq. ft
Counted as living area: Yes

Heated: Yes
Finished: Yes
Enclosed: Yes
Contiguous: Yes
Permitted: Yes
Wet space: Yes
Addition: No
Conversion: No

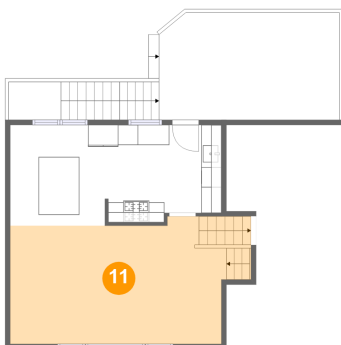
10 Floor 2 - Office



Dimensions: 11'1" x 8'9"
Area: 84 sq. ft
Counted as living area: Yes

Heated: Yes
Finished: Yes
Enclosed: Yes
Contiguous: Yes
Permitted: Yes
Wet space: No
Addition: No
Conversion: No

11 Floor 3 - Living Room



Dimensions: 21'5" x 12'8"
Area: 269 sq. ft
Counted as living area: Yes

Heated: Yes
Finished: Yes
Enclosed: Yes
Contiguous: Yes
Permitted: Yes
Wet space: No
Addition: No
Conversion: No

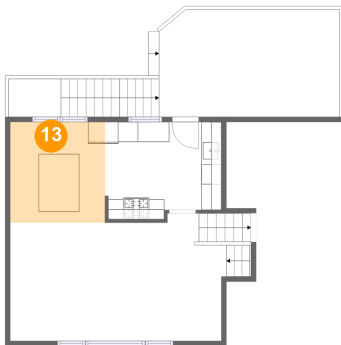
12 Floor 3 - Deck



Dimensions: 17'11" x 10'8"
Area: 244 sq. ft
Counted as living area: No

Heated: No
Finished: Yes
Enclosed: No
Contiguous: Yes
Permitted: Yes
Wet space: No
Addition: No
Conversion: No

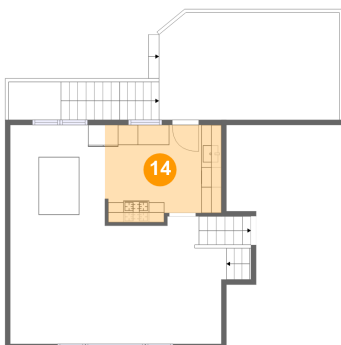
13 Floor 3 - Breakfast Nook



Dimensions: 9'5" x 10'0"
Area: 94 sq. ft
Counted as living area: Yes

Heated: Yes
Finished: Yes
Enclosed: Yes
Contiguous: Yes
Permitted: Yes
Wet space: No
Addition: No
Conversion: No

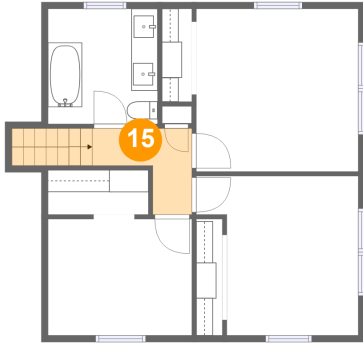
14 Floor 3 - Kitchen



Dimensions: 11'7" x 9'8"
Area: 105 sq. ft
Counted as living area: Yes

Heated: Yes
Finished: Yes
Enclosed: Yes
Contiguous: Yes
Permitted: Yes
Wet space: No
Addition: No
Conversion: No

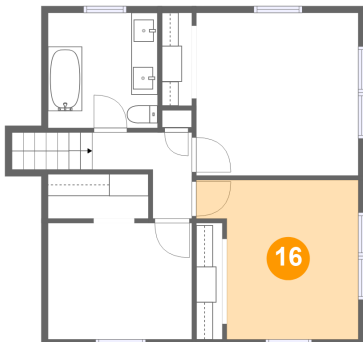
15 Floor 4 - Hall



Dimensions: 7'7" x 6'6"
Area: 50 sq. ft
Counted as living area: Yes

Heated: Yes
Finished: Yes
Enclosed: Yes
Contiguous: Yes
Permitted: Yes
Wet space: No
Addition: No
Conversion: No

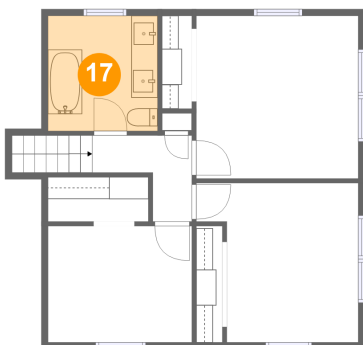
16 Floor 4 - Bedroom



Dimensions: 12'4" x 12'1"
Area: 127 sq. ft
Counted as living area: Yes

Heated: Yes
Finished: Yes
Enclosed: Yes
Contiguous: Yes
Permitted: Yes
Wet space: No
Addition: No
Conversion: No

17 Floor 4 - Bath



Dimensions: 8'4" x 8'9"
Area: 73 sq. ft
Counted as living area: Yes

Heated: Yes
Finished: Yes
Enclosed: Yes
Contiguous: Yes
Permitted: Yes
Wet space: Yes
Addition: No
Conversion: No

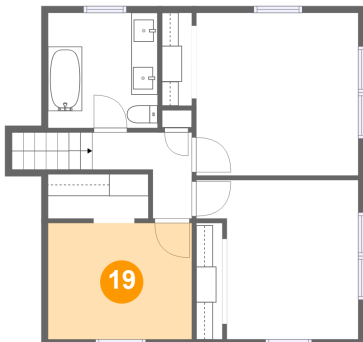
18 Floor 4 - Primary Bedroom



Dimensions: 12'4" x 12'4"
Area: 152 sq. ft
Counted as living area: Yes

Heated: Yes
Finished: Yes
Enclosed: Yes
Contiguous: Yes
Permitted: Yes
Wet space: No
Addition: No
Conversion: No

19 Floor 4 - Bedroom



Dimensions: 10'11" x 8'10"
Area: 96 sq. ft
Counted as living area: Yes

Heated: Yes
Finished: Yes
Enclosed: Yes
Contiguous: Yes
Permitted: Yes
Wet space: No
Addition: No
Conversion: No