



Fredericksburg Area Ranch Home on 1.3 Acres

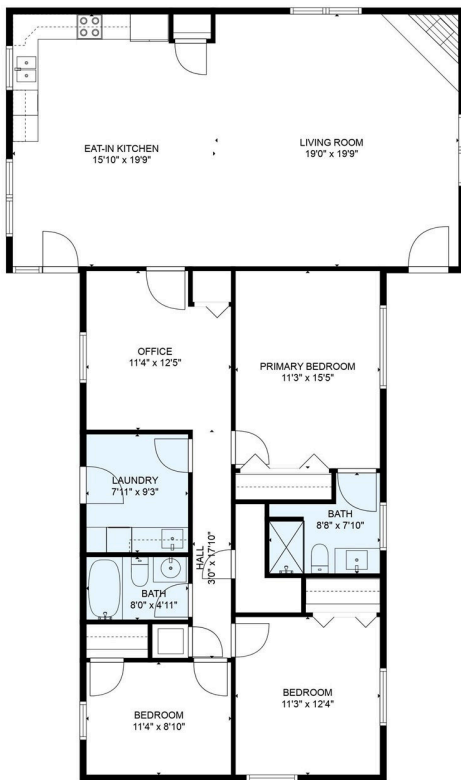
PUBLIC AUCTION

WED. SEPT. 24TH 2025 AT 6:30 PM

Located: 243 Dove Rd, Fredericksburg, PA 17026



Fredericksburg Area Ranch Home on 1.3 Acres, Featuring an Eat-In Kitchen open to the Living Room with a Cathedral Ceiling and Gas Fireplace. 3 Bedrooms and 2 Full Baths, Office, Laundry, 1716 SF Living Area, Propane Hot Air Heat, 30x32 Insulated 2 Car Garage w/elec. 10x18 Shed. Well, On-Site Septic, Tulpehocken Area Schools. Bethel Twp. **Note:** A very nice & quiet country property with one floor living. If your are looking to downsize or start a family, don't overlook this property. All on 1.3 Acres and a desirable Oversized 2 Car Garage. **Terms:** 10% Down Day Of Sale Balance Within 45 Days



TOTAL: 1596 sq. ft
FLOOR 1: 1596 sq. ft
WALLS: 96 sq. ft

MEASUREMENTS ARE DEEMED RELIABLE BUT ARE NOT GUARANTEED.



heiseyauctions.com



Terms: 10% Down Day Of Sale Balance Within 45 Days
Sale For: Wendall & Anna Beth Oberholtzer
Auctioneers: L&H AUCTIONS INC. PA-AU002453
Les Longenecker 484-256-1323 Joel Heisey 717-383-5606