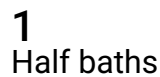
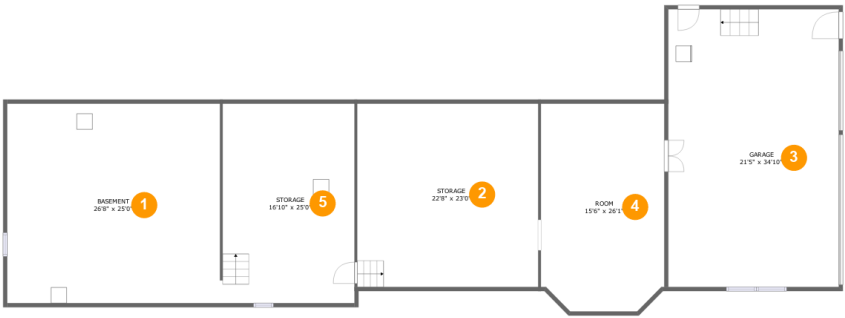


6 Tanglewood Lane, Holmdel, Monmouth County, New Jersey,
United States, 07733



6 Tanglewood Lane, Holmdel, Monmouth County, New Jersey,
United States, 07733



Room dimensions

Floor 1 Total sqft: 2917 Living area: 0

#		Dimensions	sqft	Counted as living area
1	Basement	26'8" x 25'0"	667 sq. ft	No
2	Storage	22'8" x 23'0"	522 sq. ft	No
3	Garage	21'5" x 34'10"	744 sq. ft	No
4	Room	15'6" x 26'1"	391 sq. ft	No
5	Storage	16'10" x 25'0"	415 sq. ft	No

6 Tanglewood Lane, Holmdel, Monmouth County, New Jersey,
United States, 07733



Total sqft: 4581 Living area: 3747

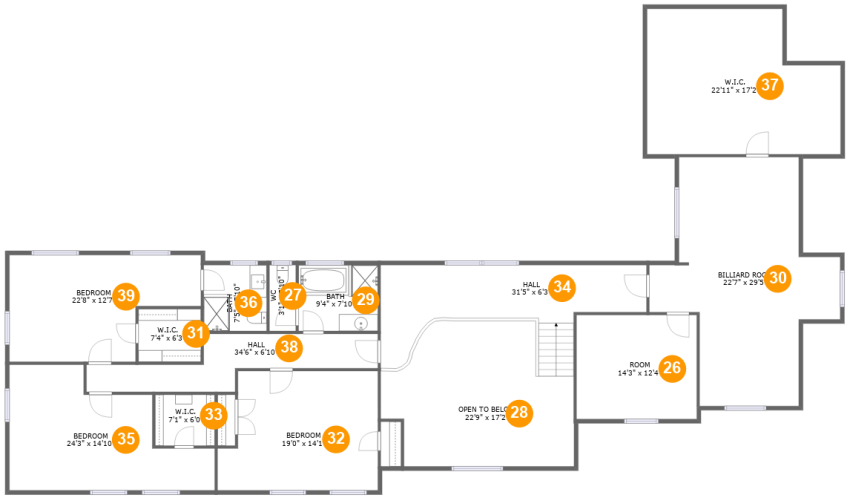
Scan captured on Wed, 23 Apr 2025 17:33:53 GMT

Home report

**6 Tanglewood Lane, Holmdel, Monmouth County, New Jersey,
United States, 07733**

#		Dimensions	sqft	Counted as living area
17	WC	3'0" x 5'1"	15 sq. ft	Yes
18	W.I.C.	12'7" x 11'4"	132 sq. ft	Yes
19	Hall	16'8" x 19'10"	299 sq. ft	Yes
20	Bath	7'1" x 10'1"	72 sq. ft	Yes
21	Primary Bedroom	18'7" x 19'0"	278 sq. ft	Yes
22	Hall	15'11" x 4'8"	76 sq. ft	Yes
23	WC	6'0" x 5'9"	34 sq. ft	Yes
24	Breakfast Nook	11'8" x 10'3"	113 sq. ft	Yes
25	Hall	11'9" x 4'11"	46 sq. ft	Yes

6 Tanglewood Lane, Holmdel, Monmouth County, New Jersey,
United States, 07733



Room dimensions

Floor 3 Total sqft: 2938 Living area: 2496

#		Dimensions	sqft	Counted as living area
26	Room	14'3" x 12'4"	175 sq. ft	Yes
27	WC	3'1" x 7'10"	24 sq. ft	Yes
28	Open To Below	22'9" x 17'2"	322 sq. ft	No
29	Bath	9'4" x 7'10"	73 sq. ft	Yes
30	Billiard Room	22'7" x 29'5"	445 sq. ft	Yes
31	W.I.C.	7'4" x 6'3"	46 sq. ft	Yes
32	Bedroom	19'0" x 14'1"	245 sq. ft	Yes
33	W.I.C.	7'1" x 6'0"	42 sq. ft	Yes
34	Hall	31'5" x 6'3"	253 sq. ft	Yes
35	Bedroom	24'3" x 14'10"	259 sq. ft	Yes
36	Bath	7'5" x 7'10"	58 sq. ft	Yes

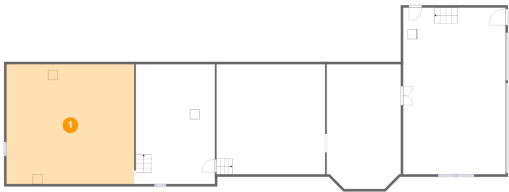
Home report

6 Tanglewood Lane, Holmdel, Monmouth County, New Jersey,
United States, 07733

#		Dimensions	sqft	Counted as living area
37	W.I.C.	22'11" x 17'2"	261 sq. ft	Yes
38	Hall	34'6" x 6'10"	139 sq. ft	Yes
39	Bedroom	22'8" x 12'7"	235 sq. ft	Yes

6 Tanglewood Lane, Holmdel, Monmouth County, New Jersey,
United States, 07733

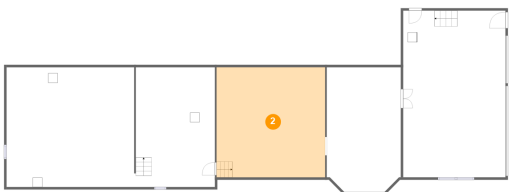
1 Floor 1 - Basement



Dimensions: 26'8" x 25'0"
Area: 667 sq. ft
Counted as living area: No

Heated: Yes
Finished: Yes
Enclosed: Yes
Contiguous: No
Permitted: Yes
Wet space: No
Addition: No
Conversion: No

2 Floor 1 - Storage

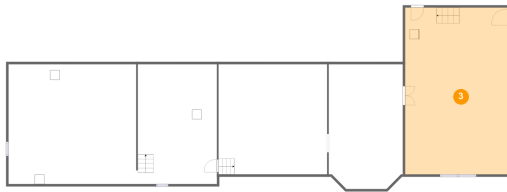


Dimensions: 22'8" x 23'0"
Area: 522 sq. ft
Counted as living area: No

Heated: No
Finished: No
Enclosed: No
Contiguous: Yes
Permitted: Yes
Wet space: No
Addition: No
Conversion: No

6 Tanglewood Lane, Holmdel, Monmouth County, New Jersey,
United States, 07733

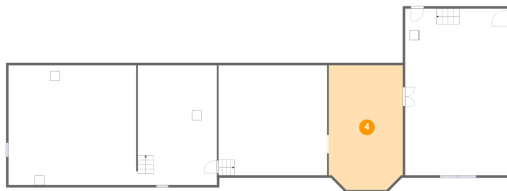
3 Floor 1 - Garage



Dimensions: 21'5" x 34'10"
Area: 744 sq. ft
Counted as living area: No

Heated: No
Finished: No
Enclosed: Yes
Contiguous: Yes
Permitted: Yes
Wet space: No
Addition: No
Conversion: No

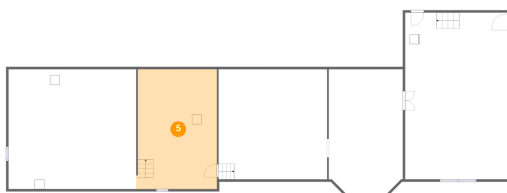
4 Floor 1 - Room



Dimensions: 15'6" x 26'1"
Area: 391 sq. ft
Counted as living area: No

Heated: Yes
Finished: Yes
Enclosed: Yes
Contiguous: No
Permitted: Yes
Wet space: No
Addition: No
Conversion: No

5 Floor 1 - Storage

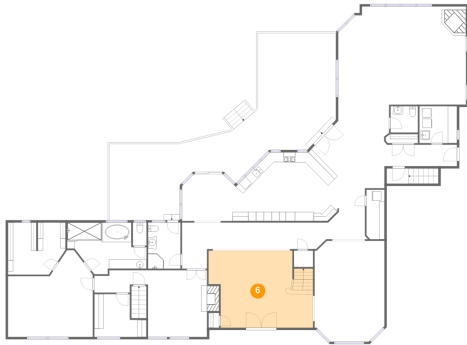


Dimensions: 16'10" x 25'0"
Area: 415 sq. ft
Counted as living area: No

Heated: No
Finished: No
Enclosed: No
Contiguous: Yes
Permitted: Yes
Wet space: No
Addition: No
Conversion: No

6 Tanglewood Lane, Holmdel, Monmouth County, New Jersey,
United States, 07733

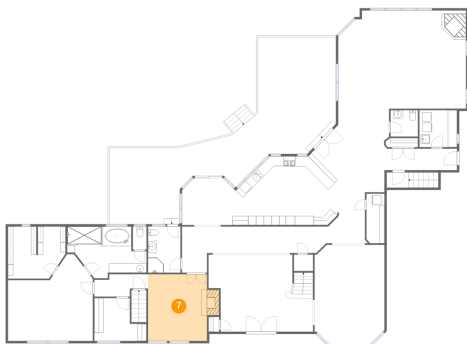
6 Floor 2 - Foyer



Dimensions: 20'3" x 16'10"
Area: 342 sq. ft
Counted as living area: Yes

Heated: Yes
Finished: Yes
Enclosed: Yes
Contiguous: Yes
Permitted: Yes
Wet space: No
Addition: No
Conversion: No

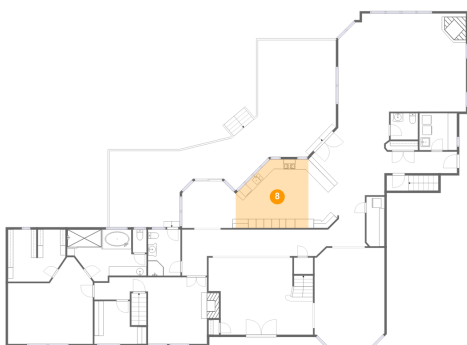
7 Floor 2 - Sitting Room



Dimensions: 12'11" x 14'7"
Area: 203 sq. ft
Counted as living area: Yes

Heated: Yes
Finished: Yes
Enclosed: Yes
Contiguous: Yes
Permitted: Yes
Wet space: No
Addition: No
Conversion: No

8 Floor 2 - Kitchen

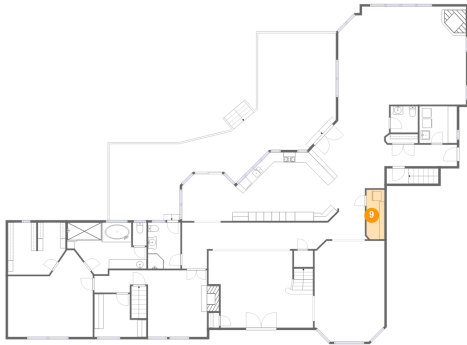


Dimensions: 15'11" x 15'0"
Area: 211 sq. ft
Counted as living area: Yes

Heated: Yes
Finished: Yes
Enclosed: Yes
Contiguous: Yes
Permitted: Yes
Wet space: No
Addition: No
Conversion: No

6 Tanglewood Lane, Holmdel, Monmouth County, New Jersey,
United States, 07733

9 Floor 2 - Pantry



Dimensions: 3'11" x 10'10"
Area: 42 sq. ft
Counted as living area: Yes

Heated: Yes
Finished: Yes
Enclosed: Yes
Contiguous: Yes
Permitted: Yes
Wet space: No
Addition: No
Conversion: No

10 Floor 2 - Primary Bath



Dimensions: 17'5" x 11'4"
Area: 147 sq. ft
Counted as living area: Yes

Heated: Yes
Finished: Yes
Enclosed: Yes
Contiguous: Yes
Permitted: Yes
Wet space: Yes
Addition: No
Conversion: No

11 Floor 2 - Laundry

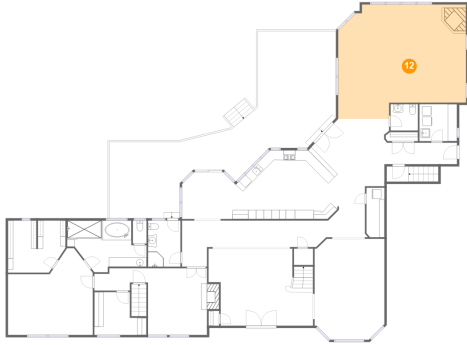


Dimensions: 8'3" x 8'1"
Area: 66 sq. ft
Counted as living area: Yes

Heated: Yes
Finished: Yes
Enclosed: Yes
Contiguous: Yes
Permitted: Yes
Wet space: No
Addition: No
Conversion: No

6 Tanglewood Lane, Holmdel, Monmouth County, New Jersey,
United States, 07733

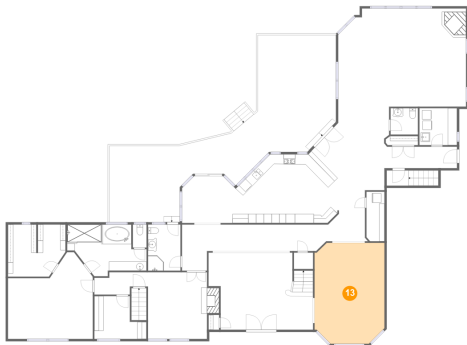
12 Floor 2 - Living Room



Dimensions: 28'0" x 25'0"
Area: 623 sq. ft
Counted as living area: Yes

Heated: Yes
Finished: Yes
Enclosed: Yes
Contiguous: Yes
Permitted: Yes
Wet space: No
Addition: No
Conversion: No

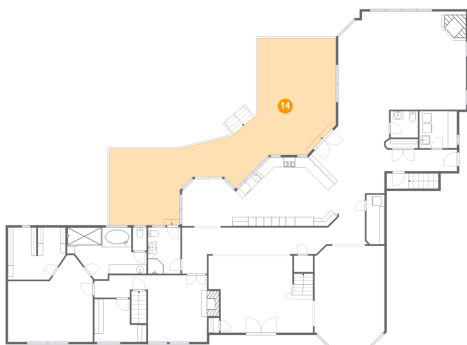
13 Floor 2 - Dining Room



Dimensions: 15'3" x 22'1"
Area: 322 sq. ft
Counted as living area: Yes

Heated: Yes
Finished: Yes
Enclosed: Yes
Contiguous: Yes
Permitted: Yes
Wet space: No
Addition: No
Conversion: No

14 Floor 2 - Patio



Dimensions: 17'1" x 25'6"
Area: 834 sq. ft
Counted as living area: No

Heated: No
Finished: Yes
Enclosed: No
Contiguous: Yes
Permitted: Yes
Wet space: No
Addition: No
Conversion: No

6 Tanglewood Lane, Holmdel, Monmouth County, New Jersey,
United States, 07733

15 Floor 2 - Hall



Dimensions: 40'1" x 10'1"
Area: 252 sq. ft
Counted as living area: Yes

Heated: Yes
Finished: Yes
Enclosed: Yes
Contiguous: Yes
Permitted: Yes
Wet space: No
Addition: No
Conversion: No

16 Floor 2 - Office



Dimensions: 11'5" x 9'4"
Area: 86 sq. ft
Counted as living area: Yes

Heated: Yes
Finished: Yes
Enclosed: Yes
Contiguous: Yes
Permitted: Yes
Wet space: No
Addition: No
Conversion: No

17 Floor 2 - WC

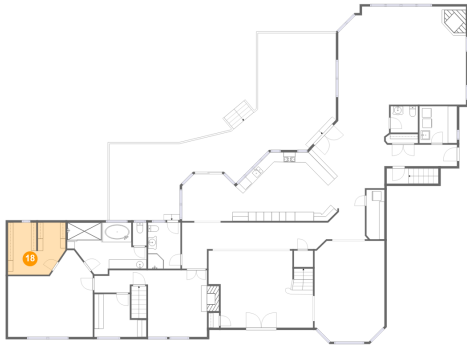


Dimensions: 3'0" x 5'1"
Area: 15 sq. ft
Counted as living area: Yes

Heated: Yes
Finished: Yes
Enclosed: Yes
Contiguous: Yes
Permitted: Yes
Wet space: Yes
Addition: No
Conversion: No

6 Tanglewood Lane, Holmdel, Monmouth County, New Jersey,
United States, 07733

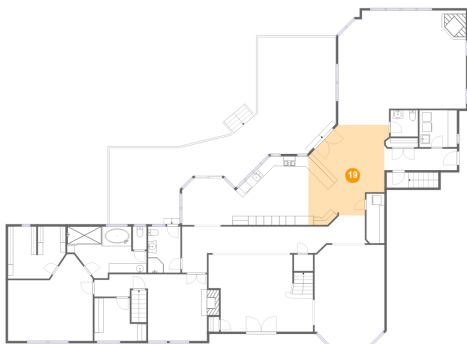
18 Floor 2 - W.I.C.



Dimensions: 12'7" x 11'4"
Area: 132 sq. ft
Counted as living area: Yes

Heated: Yes
Finished: Yes
Enclosed: Yes
Contiguous: Yes
Permitted: Yes
Wet space: No
Addition: No
Conversion: No

19 Floor 2 - Hall



Dimensions: 16'8" x 19'10"
Area: 299 sq. ft
Counted as living area: Yes

Heated: Yes
Finished: Yes
Enclosed: Yes
Contiguous: Yes
Permitted: Yes
Wet space: No
Addition: No
Conversion: No

20 Floor 2 - Bath

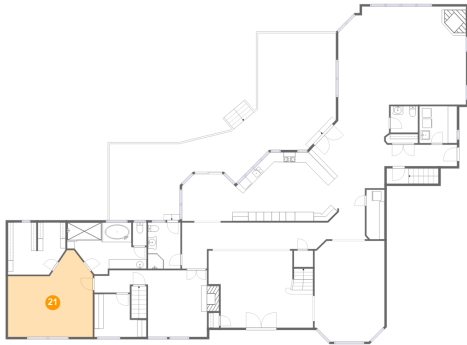


Dimensions: 7'1" x 10'1"
Area: 72 sq. ft
Counted as living area: Yes

Heated: Yes
Finished: Yes
Enclosed: Yes
Contiguous: Yes
Permitted: Yes
Wet space: Yes
Addition: No
Conversion: No

6 Tanglewood Lane, Holmdel, Monmouth County, New Jersey,
United States, 07733

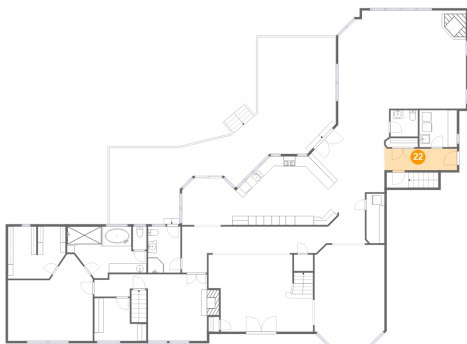
21 Floor 2 - Primary Bedroom



Dimensions: 18'7" x 19'0"
Area: 278 sq. ft
Counted as living area: Yes

Heated: Yes
Finished: Yes
Enclosed: Yes
Contiguous: Yes
Permitted: Yes
Wet space: No
Addition: No
Conversion: No

22 Floor 2 - Hall



Dimensions: 15'11" x 4'8"
Area: 76 sq. ft
Counted as living area: Yes

Heated: Yes
Finished: Yes
Enclosed: Yes
Contiguous: Yes
Permitted: Yes
Wet space: No
Addition: No
Conversion: No

23 Floor 2 - WC

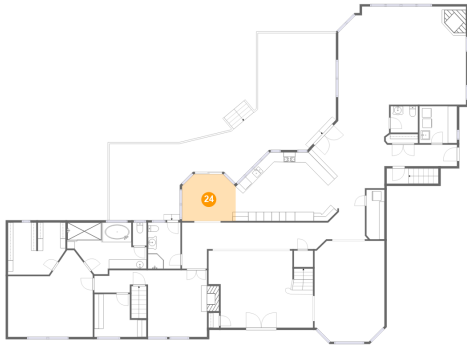


Dimensions: 6'0" x 5'9"
Area: 34 sq. ft
Counted as living area: Yes

Heated: Yes
Finished: Yes
Enclosed: Yes
Contiguous: Yes
Permitted: Yes
Wet space: Yes
Addition: No
Conversion: No

6 Tanglewood Lane, Holmdel, Monmouth County, New Jersey,
United States, 07733

24 Floor 2 - Breakfast Nook



Dimensions: 11'8" x 10'3"
Area: 113 sq. ft
Counted as living area: Yes

Heated: Yes
Finished: Yes
Enclosed: Yes
Contiguous: Yes
Permitted: Yes
Wet space: No
Addition: No
Conversion: No

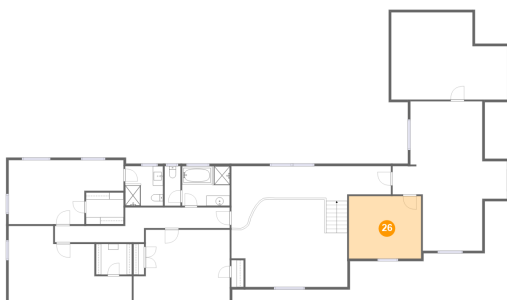
25 Floor 2 - Hall



Dimensions: 11'9" x 4'11"
Area: 46 sq. ft
Counted as living area: Yes

Heated: Yes
Finished: Yes
Enclosed: Yes
Contiguous: Yes
Permitted: Yes
Wet space: No
Addition: No
Conversion: No

26 Floor 3 - Room

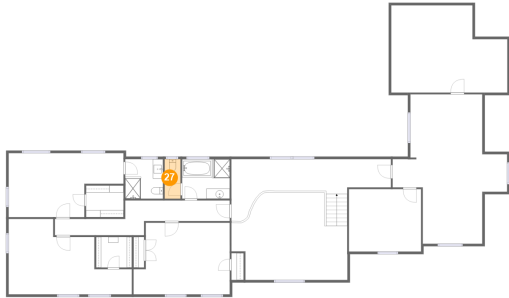


Dimensions: 14'3" x 12'4"
Area: 175 sq. ft
Counted as living area: Yes

Heated: Yes
Finished: Yes
Enclosed: Yes
Contiguous: Yes
Permitted: Yes
Wet space: No
Addition: No
Conversion: No

6 Tanglewood Lane, Holmdel, Monmouth County, New Jersey,
United States, 07733

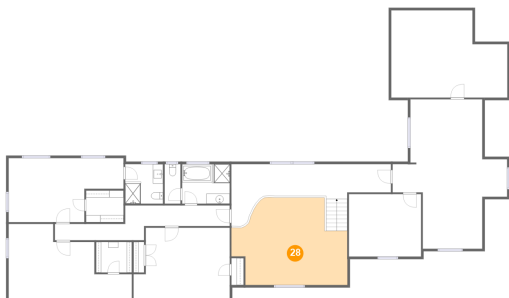
27 Floor 3 - WC



Dimensions: 3'1" x 7'10"
Area: 24 sq. ft
Counted as living area: Yes

Heated: Yes
Finished: Yes
Enclosed: Yes
Contiguous: Yes
Permitted: Yes
Wet space: No
Addition: No
Conversion: No

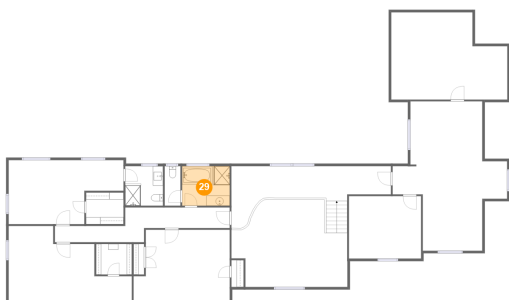
28 Floor 3 - Open To Below



Dimensions: 22'9" x 17'2"
Area: 322 sq. ft
Counted as living area: No

Heated: No
Finished: No
Enclosed: No
Contiguous: Yes
Permitted: No
Wet space: No
Addition: No
Conversion: No

29 Floor 3 - Bath

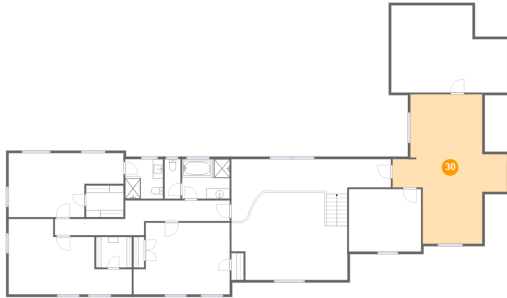


Dimensions: 9'4" x 7'10"
Area: 73 sq. ft
Counted as living area: Yes

Heated: Yes
Finished: Yes
Enclosed: Yes
Contiguous: Yes
Permitted: Yes
Wet space: Yes
Addition: No
Conversion: No

6 Tanglewood Lane, Holmdel, Monmouth County, New Jersey,
United States, 07733

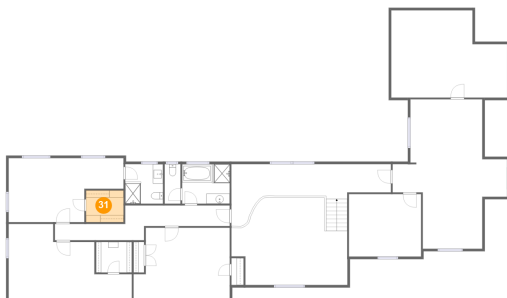
30 Floor 3 - Billiard Room



Dimensions: 22'7" x 29'5"
Area: 445 sq. ft
Counted as living area: Yes

Heated: Yes
Finished: Yes
Enclosed: Yes
Contiguous: Yes
Permitted: Yes
Wet space: No
Addition: No
Conversion: No

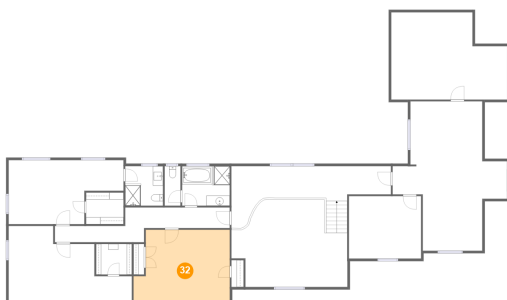
31 Floor 3 - W.I.C.



Dimensions: 7'4" x 6'3"
Area: 46 sq. ft
Counted as living area: Yes

Heated: Yes
Finished: Yes
Enclosed: Yes
Contiguous: Yes
Permitted: Yes
Wet space: No
Addition: No
Conversion: No

32 Floor 3 - Bedroom



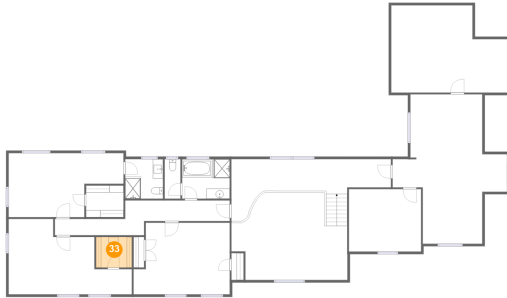
Dimensions: 19'0" x 14'1"
Area: 245 sq. ft
Counted as living area: Yes

Heated: Yes
Finished: Yes
Enclosed: Yes
Contiguous: Yes
Permitted: Yes
Wet space: No
Addition: No
Conversion: No

Home report

6 Tanglewood Lane, Holmdel, Monmouth County, New Jersey,
United States, 07733

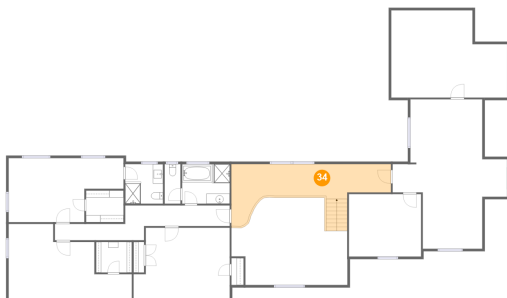
33 Floor 3 - W.I.C.



Dimensions: 7'1" x 6'0"
Area: 42 sq. ft
Counted as living area: Yes

Heated: Yes
Finished: Yes
Enclosed: Yes
Contiguous: Yes
Permitted: Yes
Wet space: No
Addition: No
Conversion: No

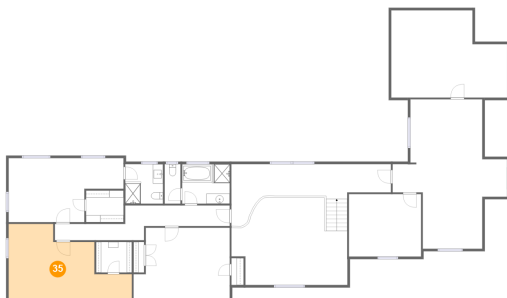
34 Floor 3 - Hall



Dimensions: 31'5" x 6'3"
Area: 253 sq. ft
Counted as living area: Yes

Heated: Yes
Finished: Yes
Enclosed: Yes
Contiguous: Yes
Permitted: Yes
Wet space: No
Addition: No
Conversion: No

35 Floor 3 - Bedroom

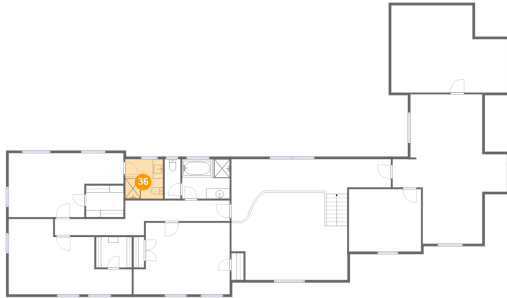


Dimensions: 24'3" x 14'10"
Area: 259 sq. ft
Counted as living area: Yes

Heated: Yes
Finished: Yes
Enclosed: Yes
Contiguous: Yes
Permitted: Yes
Wet space: No
Addition: No
Conversion: No

6 Tanglewood Lane, Holmdel, Monmouth County, New Jersey,
United States, 07733

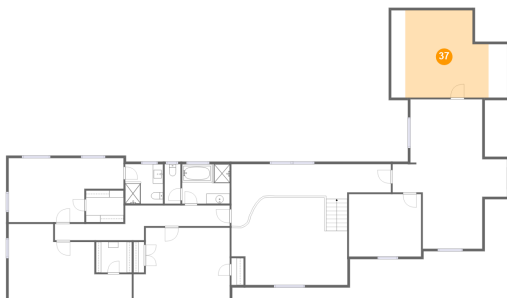
36 Floor 3 - Bath



Dimensions: 7'5" x 7'10"
Area: 58 sq. ft
Counted as living area: Yes

Heated: Yes
Finished: Yes
Enclosed: Yes
Contiguous: Yes
Permitted: Yes
Wet space: Yes
Addition: No
Conversion: No

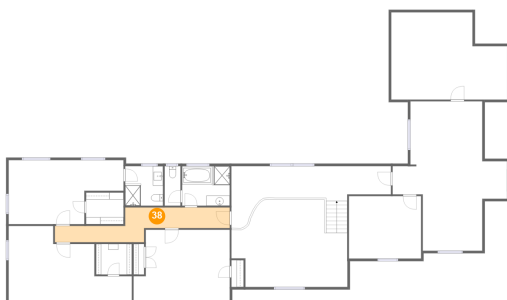
37 Floor 3 - W.I.C.



Dimensions: 22'11" x 17'2"
Area: 261 sq. ft
Counted as living area: Yes

Heated: Yes
Finished: Yes
Enclosed: Yes
Contiguous: Yes
Permitted: Yes
Wet space: No
Addition: No
Conversion: No

38 Floor 3 - Hall

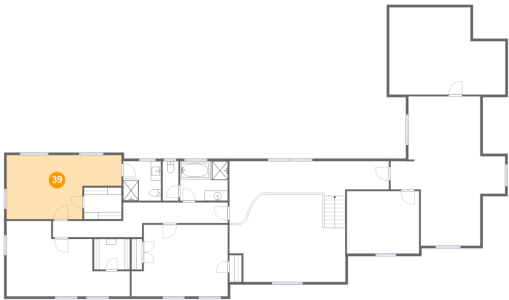


Dimensions: 34'6" x 6'10"
Area: 139 sq. ft
Counted as living area: Yes

Heated: Yes
Finished: Yes
Enclosed: Yes
Contiguous: Yes
Permitted: Yes
Wet space: No
Addition: No
Conversion: No

6 Tanglewood Lane, Holmdel, Monmouth County, New Jersey,
United States, 07733

39 Floor 3 - Bedroom



Dimensions: 22'8" x 12'7"
Area: 235 sq. ft
Counted as living area: Yes

Heated: Yes
Finished: Yes
Enclosed: Yes
Contiguous: Yes
Permitted: Yes
Wet space: No
Addition: No
Conversion: No