

# 17 Palm Ter, Belleair, Pinellas County, Florida, United States, 33756

Gross Living Area: 3274 sq. ft



Space	Area (sq. ft)	Calculation
FLOOR 1 (Living area)	1736	Coordinate Polygon Area Algorithm using inches $-((296.4 + 300.1) * (161 - 164.5) + (300.1 + 302.4) * (164.5 - 164.5) + (302.4 + 302.4) * (164.5 - 317.2) + (302.4 + 353.7) * (317.2 - 317.2) + (353.7 + 353.7) * (317.2 - 333.9) + (353.7 + 404.7) * (333.9 - 333.9) + (404.7 + 404.7) * (333.9 - 311.6) + (404.7 + 591.2) * (311.6 - 311.6) + (591.2 + 591.2) * (311.6 - 753.8) + (591.2 + 368.5) * (753.8 - 753.8) + (368.5 + 368.5) * (753.8 - 794.3) + (368.5 + 205.4) * (794.3 - 794.3) + (205.4 + 205.4) * (794.3 - 611.7) + (205.4 + 73.3) * (611.7 - 611.7) + (73.3 + 73.3) * (611.7 - 161) + (73.3 + 296.4) * (161 - 161)) * 0.5 * 0.00694$

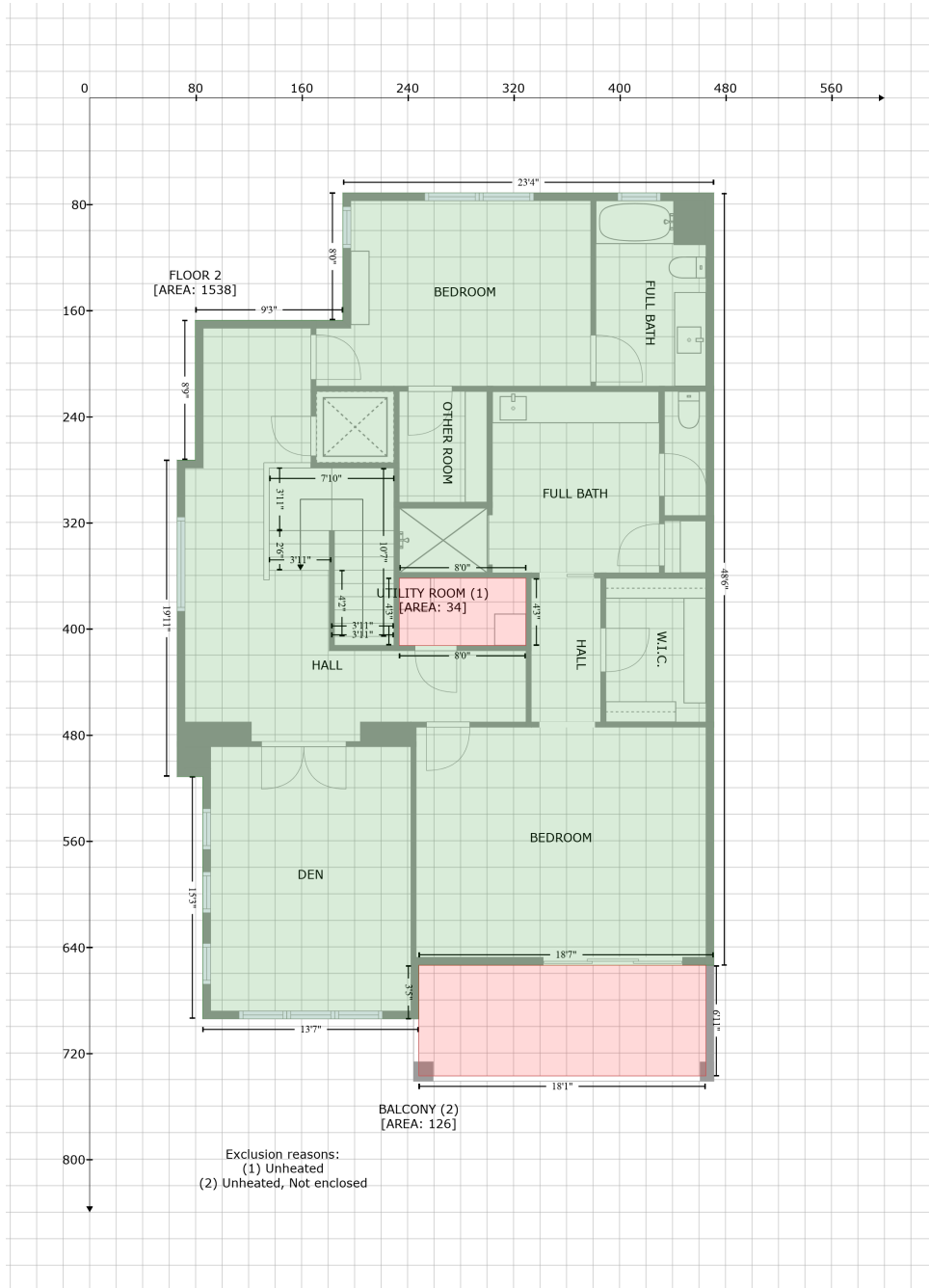
# 17 Palm Ter, Belleair, Pinellas County, Florida, United States, 33756

Gross Living Area: 3274 sq. ft

Space	Area (sq. ft)	Calculation <small>Coordinate Polygon Area Algorithm using inches</small>
PATIO (Non-living area)	114	$-\left((205.4 + 205.4) * (611.7 - 735.5) + (205.4 + 73.3) * (735.5 - 735.5) + (73.3 + 73.3) * (735.5 - 611.7) + (73.3 + 205.4) * (611.7 - 611.7)\right) * 0.5 * 0.00694$
PORCH (Non-living area)	136	$-\left((585.2 + 585.2) * (753.8 - 842.8) + (585.2 + 362.8) * (842.8 - 842.7) + (362.8 + 362.8) * (842.7 - 794.3) + (362.8 + 368.5) * (794.3 - 794.3) + (368.5 + 368.5) * (794.3 - 753.8) + (368.5 + 585.2) * (753.8 - 753.8)\right) * 0.5 * 0.00694$
GARAGE (Non-living area)	512	$-\left((591.2 + 591.2) * (63.5 - 311.6) + (591.2 + 404.7) * (311.6 - 311.6) + (404.7 + 404.7) * (311.6 - 333.9) + (404.7 + 353.7) * (333.9 - 333.9) + (353.7 + 353.7) * (333.9 - 317.2) + (353.7 + 302.4) * (317.2 - 317.2) + (302.4 + 302.4) * (317.2 - 164.5) + (302.4 + 300.1) * (164.5 - 164.5) + (300.1 + 296.4) * (164.5 - 161) + (296.4 + 296.4) * (161 - 63.5) + (296.4 + 591.2) * (63.5 - 63.5)\right) * 0.5 * 0.00694$

# 17 Palm Ter, Belleair, Pinellas County, Florida, United States, 33756

Gross Living Area: 3274 sq. ft



Space	Area (sq. ft)	Calculation
FLOOR 2 (Living area)	1538	Coordinate Polygon Area Algorithm using inches $-((471.2 + 471.2) * (71.5 - 653.8) + (471.2 + 248.5) * (653.8 - 653.8) + (248.5 + 248.5) * (653.8 - 694.3) + (248.5 + 85.4) * (694.3 - 694.3) + (85.4 + 85.4) * (694.3 - 511.7) + (85.4 + 66) * (511.7 - 511.7) + (66 + 66) * (511.7 - 273) + (66 + 79.7) * (273 - 273) + (79.7 + 79.7) * (273 - 167.7) + (79.7 + 191.2) * (167.7 - 167.7) + (191.2 + 191.2) * (167.7 - 71.5) + (191.2 + 471.2) * (71.5 - 71.5) * 0.5 * 0.00694 - ((329.4 + 233.7) * (362 - 362) + (233.7 + 233.7) * (362 - 412.8) + (233.7 + 329.4) * (412.8 - 412.8) + (329.4 + 329.4) * (412.8 - 362)) * 0.5 * 0.00694$

# 17 Palm Ter, Belleair, Pinellas County, Florida, United States, 33756

Gross Living Area: 3274 sq. ft

Space	Area (sq. ft)	Calculation <small>Coordinate Polygon Area Algorithm using inches</small>
UTILITY ROOM (Non-living area)	34	$-((329.4 + 329.4) * (362 - 412.8) + (329.4 + 233.7) * (412.8 - 412.8) + (233.7 + 233.7) * (412.8 - 362) + (233.7 + 329.4) * (362 - 362)) * 0.5 * 0.00694$
BALCONY (Non-living area)	126	$-((465.2 + 465.2) * (653.8 - 737.3) + (465.2 + 248.5) * (737.3 - 737.3) + (248.5 + 248.5) * (737.3 - 653.8) + (248.5 + 465.2) * (653.8 - 653.8)) * 0.5 * 0.00694$