

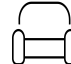
1325 Nellie St, Sturgis, SD, US




Property summary

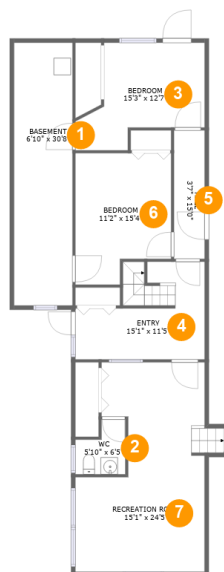
 **0** Garages  **5** Bedrooms  **1** Bathrooms  **1** Half baths

 **3** Floors

 **2,867** Gross living area sqft

 **3,099** Total sqft

1325 Nellie St, Sturgis, SD, US

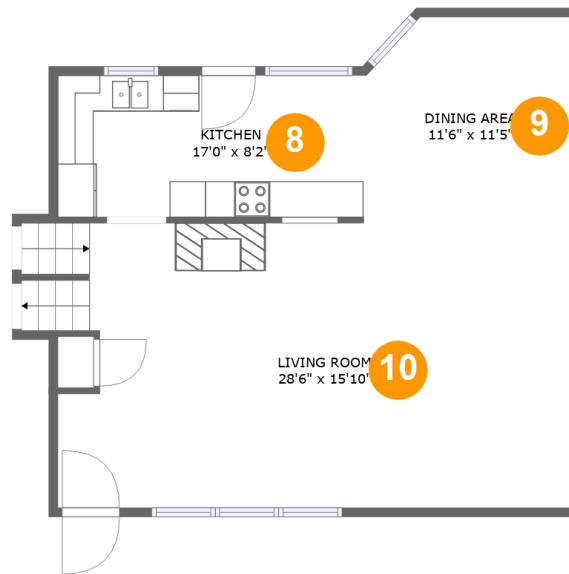


Room dimensions

Floor 1

Total sqft: 1245 Living area: 1013

#		Dimensions	sqft	Counted as living area
1	Basement	6'10" x 30'8"	136 sq. ft	No
2	WC	5'10" x 6'5"	30 sq. ft	Yes
3	Bedroom	15'3" x 12'7"	138 sq. ft	Yes
4	Entry	15'1" x 11'5"	139 sq. ft	Yes
5	Hall	3'7" x 15'0"	54 sq. ft	Yes
6	Bedroom	11'2" x 15'4"	154 sq. ft	Yes
7	Recreation Room	15'1" x 24'5"	312 sq. ft	Yes

1325 Nellie St, Sturgis, SD, US**Room dimensions**

Floor 2

Total sqft: 787 Living area: 787

#		Dimensions	sqft	Counted as living area
8	Kitchen	17'0" x 8'2"	135 sq. ft	Yes
9	Dining Area	11'6" x 11'5"	127 sq. ft	Yes
10	Living Room	28'6" x 15'10"	454 sq. ft	Yes

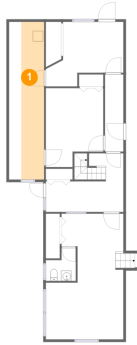
1325 Nellie St, Sturgis, SD, US**Room dimensions**

Floor 3

Total sqft: 1067 Living area: 1067

#		Dimensions	sqft	Counted as living area
11	Bath	7'9" x 7'6"	58 sq. ft	Yes
12	Primary Bedroom	15'1" x 19'6"	294 sq. ft	Yes
13	Bedroom	11'3" x 11'7"	118 sq. ft	Yes
14	Hall	3'4" x 11'4"	70 sq. ft	Yes
15	Bedroom	12'7" x 14'0"	170 sq. ft	Yes
16	Hall	7'0" x 20'11"	90 sq. ft	Yes

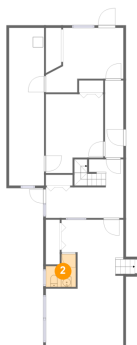
1 Floor 1 - Basement



Dimensions: 6'10" x 30'8"
Area: 136 sq. ft
Counted as living area: No

Heated: Yes
Finished: No
Enclosed: Yes
Contiguous: Yes
Permitted: Yes
Wet space: No
Addition: No
Conversion: No

2 Floor 1 - WC

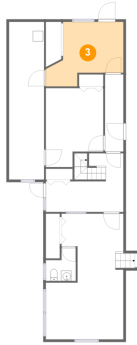


Dimensions: 5'10" x 6'5"
Area: 30 sq. ft
Counted as living area: Yes

Heated: Yes
Finished: Yes
Enclosed: Yes
Contiguous: Yes
Permitted: Yes
Wet space: Yes
Addition: No
Conversion: No

1325 Nellie St, Sturgis, SD, US

3 Floor 1 - Bedroom



Dimensions: 15'3" x 12'7"
Area: 138 sq. ft
Counted as living area: Yes

Heated: Yes
Finished: Yes
Enclosed: Yes
Contiguous: Yes
Permitted: Yes
Wet space: No
Addition: No
Conversion: No

4 Floor 1 - Entry



Dimensions: 15'1" x 11'5"
Area: 139 sq. ft
Counted as living area: Yes

Heated: Yes
Finished: Yes
Enclosed: Yes
Contiguous: Yes
Permitted: Yes
Wet space: No
Addition: No
Conversion: No

5 Floor 1 - Hall



Dimensions: 3'7" x 15'0"
Area: 54 sq. ft
Counted as living area: Yes

Heated: Yes
Finished: Yes
Enclosed: Yes
Contiguous: Yes
Permitted: Yes
Wet space: No
Addition: No
Conversion: No

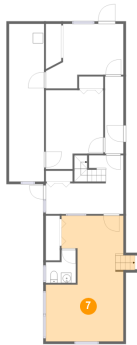
6 Floor 1 - Bedroom



Dimensions: 11'2" x 15'4"
Area: 154 sq. ft
Counted as living area: Yes

Heated: Yes
Finished: Yes
Enclosed: Yes
Contiguous: Yes
Permitted: Yes
Wet space: No
Addition: No
Conversion: No

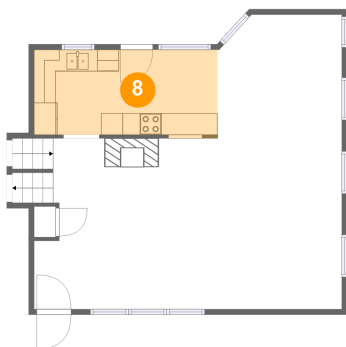
7 Floor 1 - Recreation Room



Dimensions: 15'1" x 24'5"
Area: 312 sq. ft
Counted as living area: Yes

Heated: Yes
Finished: Yes
Enclosed: Yes
Contiguous: Yes
Permitted: Yes
Wet space: No
Addition: No
Conversion: No

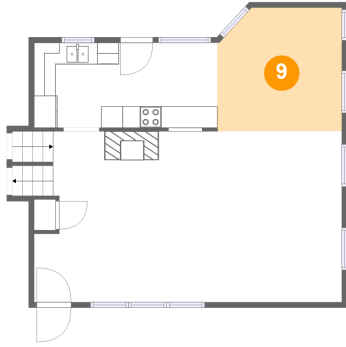
8 Floor 2 - Kitchen



Dimensions: 17'0" x 8'2"
Area: 135 sq. ft
Counted as living area: Yes

Heated: Yes
Finished: Yes
Enclosed: Yes
Contiguous: Yes
Permitted: Yes
Wet space: No
Addition: No
Conversion: No

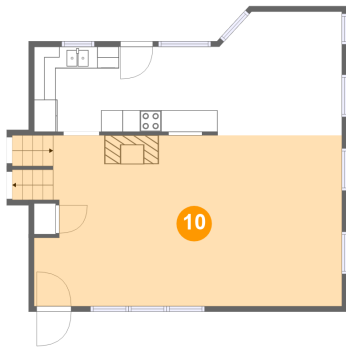
9 Floor 2 - Dining Area



Dimensions: 11'6" x 11'5"
Area: 127 sq. ft
Counted as living area: Yes

Heated: Yes
Finished: Yes
Enclosed: Yes
Contiguous: Yes
Permitted: Yes
Wet space: No
Addition: No
Conversion: No

10 Floor 2 - Living Room



Dimensions: 28'6" x 15'10"
Area: 454 sq. ft
Counted as living area: Yes

Heated: Yes
Finished: Yes
Enclosed: Yes
Contiguous: Yes
Permitted: Yes
Wet space: No
Addition: No
Conversion: No

11 Floor 3 - Bath



Dimensions: 7'9" x 7'6"
Area: 58 sq. ft
Counted as living area: Yes

Heated: Yes
Finished: Yes
Enclosed: Yes
Contiguous: Yes
Permitted: Yes
Wet space: Yes
Addition: No
Conversion: No

12 Floor 3 - Primary Bedroom



Dimensions: 15'1" x 19'6"
Area: 294 sq. ft
Counted as living area: Yes

Heated: Yes
Finished: Yes
Enclosed: Yes
Contiguous: Yes
Permitted: Yes
Wet space: No
Addition: No
Conversion: No

13 Floor 3 - Bedroom



Dimensions: 11'3" x 11'7"
Area: 118 sq. ft
Counted as living area: Yes

Heated: Yes
Finished: Yes
Enclosed: Yes
Contiguous: Yes
Permitted: Yes
Wet space: No
Addition: No
Conversion: No

14 Floor 3 - Hall



Dimensions: 3'4" x 11'4"
Area: 70 sq. ft
Counted as living area: Yes

Heated: Yes
Finished: Yes
Enclosed: Yes
Contiguous: Yes
Permitted: Yes
Wet space: No
Addition: No
Conversion: No

15 Floor 3 - Bedroom



Dimensions: 12'7" x 14'0"
Area: 170 sq. ft
Counted as living area: Yes

Heated: Yes
Finished: Yes
Enclosed: Yes
Contiguous: Yes
Permitted: Yes
Wet space: No
Addition: No
Conversion: No

16 Floor 3 - Hall



Dimensions: 7'0" x 20'11"
Area: 90 sq. ft
Counted as living area: Yes

Heated: Yes
Finished: Yes
Enclosed: Yes
Contiguous: Yes
Permitted: Yes
Wet space: No
Addition: No
Conversion: No