

Home data report

968 Grand Cerritos Ave, Las Vegas, NV, US



**Total Area: 1854 sq. ft**  
1st Floor: 1028 sq. ft, 2nd Floor: 826 sq. ft  
Excluded: Porch 79 sq. ft, Patio 278 sq. ft, Open to below 4 sq. ft, Walls: 151 sq. ft

Property summary

 **2** Floors

 **3** Bedrooms

 **2** Bathrooms

Home data report

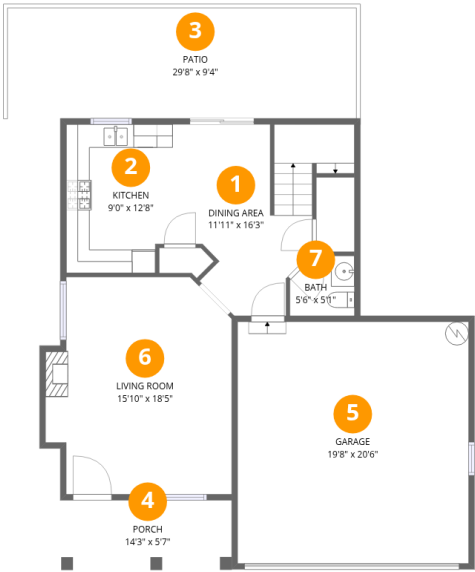
968 Grand Cerritos Ave,Las Vegas,NV,US

 **1**  
Half baths

 **1**  
Garages

Home data report

968 Grand Cerritos Ave,Las Vegas,NV,US



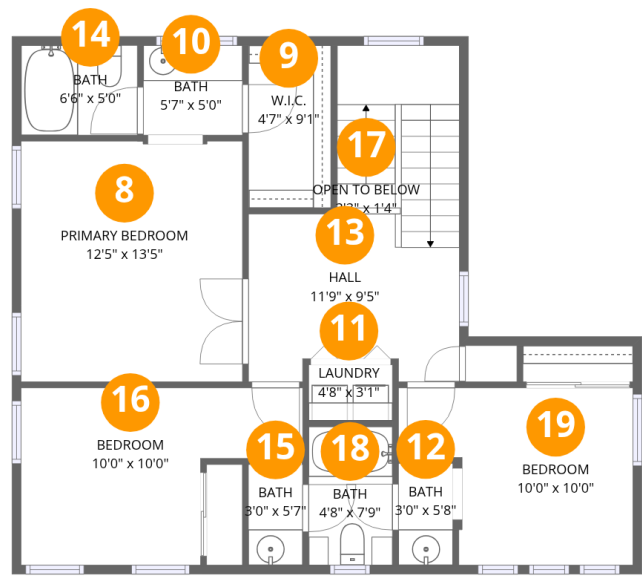
Room dimensions

Floor 1 Total:1028sqft Excluded: 357sqft

#		Dimensions	sqft	Counted as living area
1	Dining Area	11'11" x 16'3"	175 sq. ft	Yes
2	Kitchen	9'0" x 12'8"	111 sq. ft	Yes
3	Patio	29'8" x 9'4"	278 sq. ft	No
4	Porch	14'3" x 5'7"	79 sq. ft	No
5	Garage	19'8" x 20'6"	403 sq. ft	Yes
6	Living Room	15'10" x 18'5"	267 sq. ft	Yes
7	Bath	5'6" x 5'1"	26 sq. ft	Yes

Home data report

968 Grand Cerritos Ave,Las Vegas,NV,US



Room dimensions

Floor 2 Total:826sqft   Excluded: 4sqft

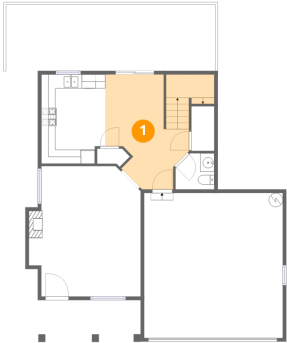
#		Dimensions	sqft	Counted as living area
8	Primary Bedroom	12'5" x 13'5"	166 sq. ft	Yes
9	W.I.C.	4'7" x 9'1"	42 sq. ft	Yes
10	Bath	5'7" x 5'0"	28 sq. ft	Yes
11	Laundry	4'8" x 3'1"	15 sq. ft	Yes
12	Bath	3'0" x 5'8"	17 sq. ft	Yes
13	Hall	11'9" x 9'5"	164 sq. ft	Yes
14	Bath	6'6" x 5'0"	33 sq. ft	Yes
15	Bath	3'0" x 5'7"	17 sq. ft	Yes
16	Bedroom	10'0" x 10'0"	122 sq. ft	Yes
17	Open To Below	3'3" x 1'4"	4 sq. ft	No
18	Bath	4'8" x 7'9"	36 sq. ft	Yes

Home data report

968 Grand Cerritos Ave,Las Vegas,NV,US

#		Dimensions	sqft	Counted as living area
19	Bedroom	10'0" x 10'0"	109 sq. ft	Yes

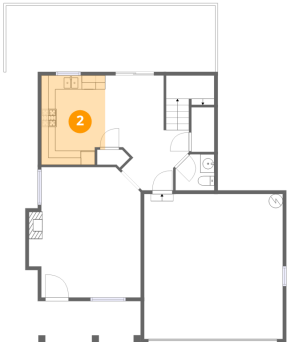
1 Floor 1 - Dining Area



Dimensions: 11'11" x 16'3"  
Area: 175 sq. ft  
Counted as living area: Yes

Heated: Yes  
Finished: Yes  
Enclosed: Yes  
Contiguous: Yes  
Permitted: Yes  
Wet space: No  
Addition: No  
Conversion: No

2 Floor 1 - Kitchen



Dimensions: 9'0" x 12'8"  
Area: 111 sq. ft  
Counted as living area: Yes

Heated: Yes  
Finished: Yes  
Enclosed: Yes  
Contiguous: Yes  
Permitted: Yes  
Wet space: No  
Addition: No  
Conversion: No

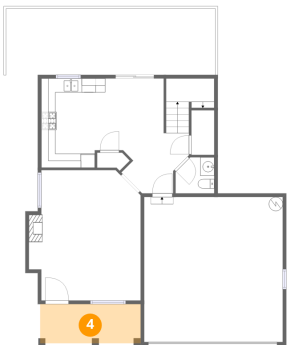
3 Floor 1 - Patio



Dimensions: 29'8" x 9'4"  
Area: 278 sq. ft  
Counted as living area: No

Heated: No  
Finished: No  
Enclosed: No  
Contiguous: Yes  
Permitted: Yes  
Wet space: No  
Addition: No  
Conversion: No

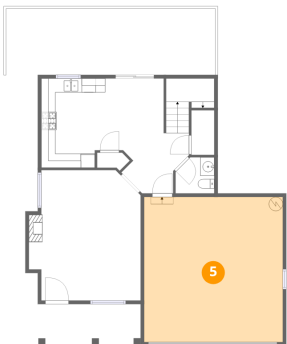
4 Floor 1 - Porch



Dimensions: 14'3" x 5'7"  
Area: 79 sq. ft  
Counted as living area: No

Heated: No  
Finished: No  
Enclosed: No  
Contiguous: Yes  
Permitted: Yes  
Wet space: No  
Addition: No  
Conversion: No

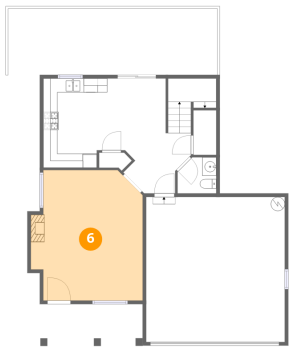
5 Floor 1 - Garage



Dimensions: 19'8" x 20'6"  
Area: 403 sq. ft  
Counted as living area: No

Heated: No  
Finished: Yes  
Enclosed: Yes  
Contiguous: Yes  
Permitted: Yes  
Wet space: No  
Addition: No  
Conversion: No

6 Floor 1 - Living Room



Dimensions: 15'10" x 18'5"  
Area: 267 sq. ft  
Counted as living area: Yes

Heated: Yes  
Finished: Yes  
Enclosed: Yes  
Contiguous: Yes  
Permitted: Yes  
Wet space: No  
Addition: No  
Conversion: No

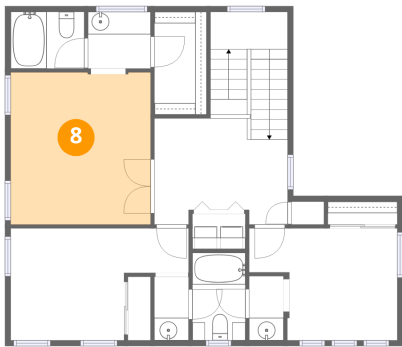
7 Floor 1 - Bath



Dimensions: 5'6" x 5'1"  
Area: 26 sq. ft  
Counted as living area: Yes

Heated: Yes  
Finished: Yes  
Enclosed: Yes  
Contiguous: Yes  
Permitted: Yes  
Wet space: Yes  
Addition: No  
Conversion: No

8 Floor 2 - Primary Bedroom



Dimensions: 12'5" x 13'5"  
Area: 166 sq. ft  
Counted as living area: Yes

Heated: Yes  
Finished: Yes  
Enclosed: Yes  
Contiguous: Yes  
Permitted: Yes  
Wet space: No  
Addition: No  
Conversion: No

## 9 Floor 2 - W.I.C.



Dimensions: 4'7" x 9'1"  
Area: 42 sq. ft  
Counted as living area: Yes

Heated: Yes  
Finished: Yes  
Enclosed: Yes  
Contiguous: Yes  
Permitted: Yes  
Wet space: No  
Addition: No  
Conversion: No

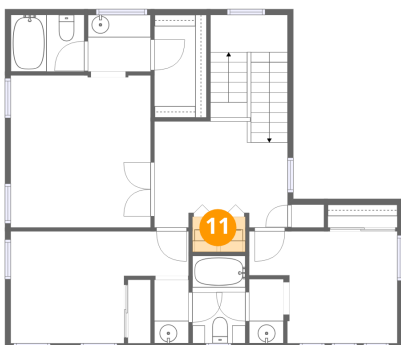
## 10 Floor 2 - Bath



Dimensions: 5'7" x 5'0"  
Area: 28 sq. ft  
Counted as living area: Yes

Heated: Yes  
Finished: Yes  
Enclosed: Yes  
Contiguous: Yes  
Permitted: Yes  
Wet space: Yes  
Addition: No  
Conversion: No

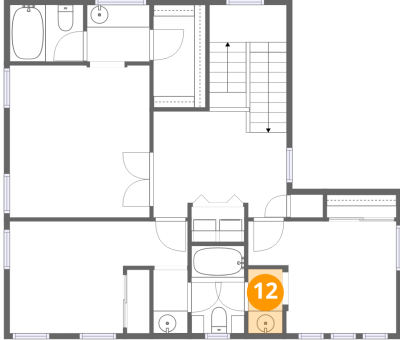
## 11 Floor 2 - Laundry



Dimensions: 4'8" x 3'1"  
Area: 15 sq. ft  
Counted as living area: Yes

Heated: Yes  
Finished: Yes  
Enclosed: Yes  
Contiguous: Yes  
Permitted: Yes  
Wet space: No  
Addition: No  
Conversion: No

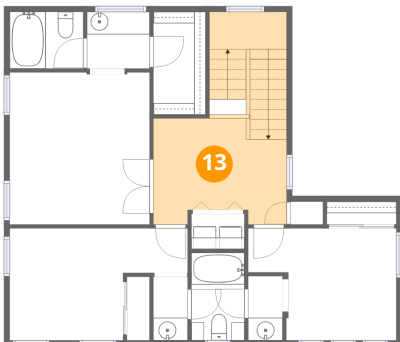
## 12 Floor 2 - Bath



Dimensions: 3'0" x 5'8"  
Area: 17 sq. ft  
Counted as living area: Yes

Heated: Yes  
Finished: Yes  
Enclosed: Yes  
Contiguous: Yes  
Permitted: Yes  
Wet space: Yes  
Addition: No  
Conversion: No

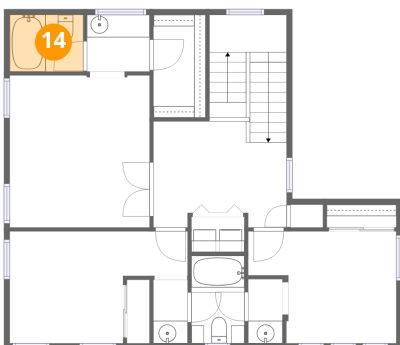
## 13 Floor 2 - Hall



Dimensions: 11'9" x 9'5"  
Area: 164 sq. ft  
Counted as living area: Yes

Heated: Yes  
Finished: Yes  
Enclosed: Yes  
Contiguous: Yes  
Permitted: Yes  
Wet space: No  
Addition: No  
Conversion: No

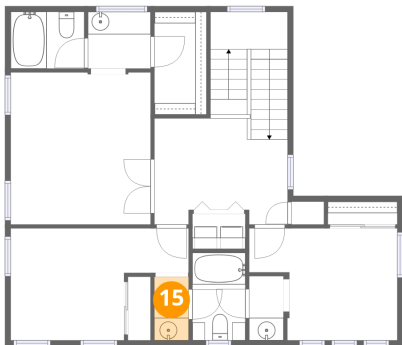
## 14 Floor 2 - Bath



Dimensions: 6'6" x 5'0"  
Area: 33 sq. ft  
Counted as living area: Yes

Heated: Yes  
Finished: Yes  
Enclosed: Yes  
Contiguous: Yes  
Permitted: Yes  
Wet space: Yes  
Addition: No  
Conversion: No

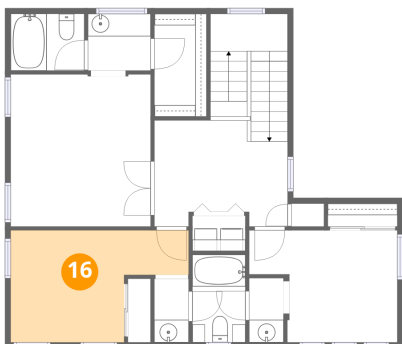
15 Floor 2 - Bath



Dimensions: 3'0" x 5'7"  
Area: 17 sq. ft  
Counted as living area: Yes

Heated: Yes  
Finished: Yes  
Enclosed: Yes  
Contiguous: Yes  
Permitted: Yes  
Wet space: Yes  
Addition: Yes  
Conversion: Yes

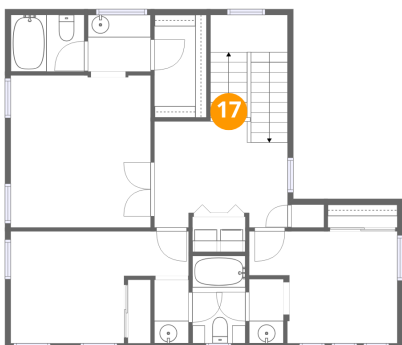
16 Floor 2 - Bedroom



Dimensions: 10'0" x 10'0"  
Area: 122 sq. ft  
Counted as living area: Yes

Heated: Yes  
Finished: Yes  
Enclosed: Yes  
Contiguous: Yes  
Permitted: Yes  
Wet space: No  
Addition: No  
Conversion: No

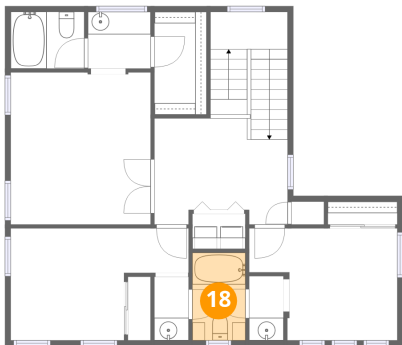
17 Floor 2 - Open To Below



Dimensions: 3'3" x 1'4"  
Area: 4 sq. ft  
Counted as living area: No

Heated: No  
Finished: No  
Enclosed: No  
Contiguous: Yes  
Permitted: No  
Wet space: No  
Addition: No  
Conversion: No

18 Floor 2 - Bath



Dimensions: 4'8" x 7'9"  
Area: 36 sq. ft  
Counted as living area: Yes

Heated: Yes  
Finished: Yes  
Enclosed: Yes  
Contiguous: Yes  
Permitted: Yes  
Wet space: Yes  
Addition: No  
Conversion: No

19 Floor 2 - Bedroom



Dimensions: 10'0" x 10'0"  
Area: 109 sq. ft  
Counted as living area: Yes

Heated: Yes  
Finished: Yes  
Enclosed: Yes  
Contiguous: Yes  
Permitted: Yes  
Wet space: No  
Addition: No  
Conversion: No