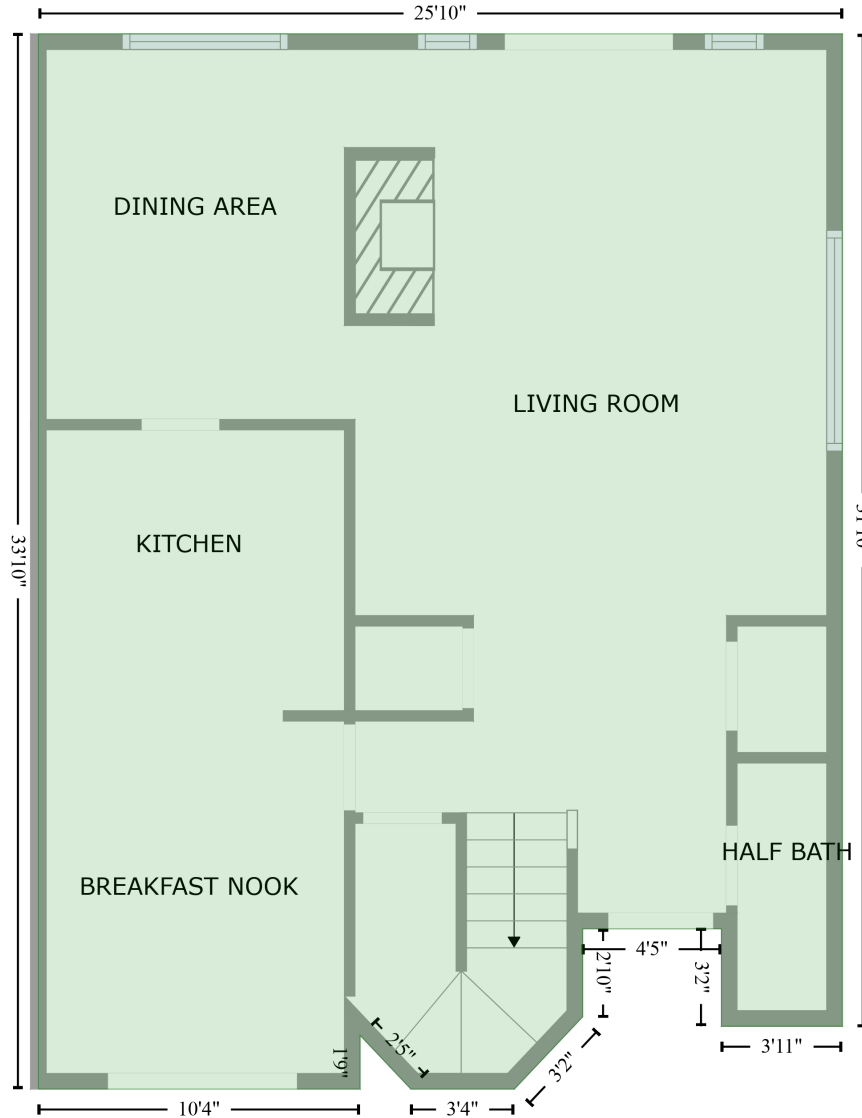


7840 Creekside Dr, Pleasanton, CA, US

Gross Living Area: 1556 sq. ft

FLOOR 1
[AREA: 840]

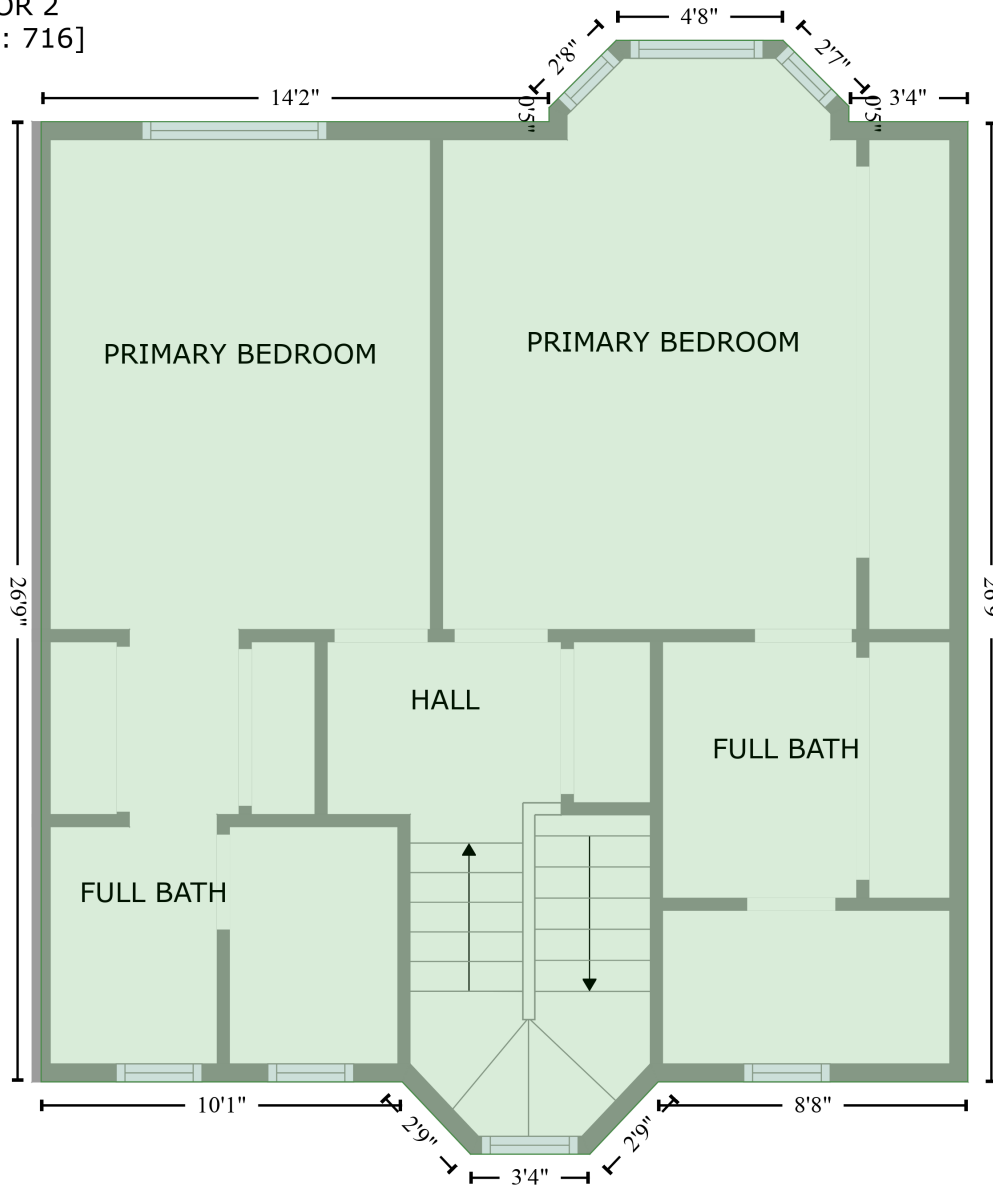


Space	Area (sq. ft)	Calculation <small>Coordinate Polygon Area Algorithm using inches</small>
FLOOR 1 (Living area)	840	$ \begin{aligned} & -((26.1 + 335.9) * (-87.5 - -87.5) + (335.9 + 335.9) * (-87.5 - 294.8) + (335.9 + 289.3) * (294.8 - \\ & 294.8) + (289.3 + 289.3) * (294.8 - 257.2) + (289.3 + 235.9) * (257.2 - 257.2) + (235.9 + 235.9) * \\ & (257.2 - 291.1) + (235.9 + 209.6) * (291.1 - 319) + (209.6 + 169.7) * (319 - 319) + (169.7 + 150.1) \\ & * (319 - 298.2) + (150.1 + 150.1) * (298.2 - 319) + (150.1 + 26.1) * (319 - 319) + (26.1 + 26.1) * \\ & (319 - -87.5)) * 0.5 * 0.00694 \end{aligned} $

7840 Creekside Dr, Pleasanton, CA, US

Gross Living Area: 1556 sq. ft

FLOOR 2
[AREA: 716]



Space	Area (sq. ft)	Calculation <small>Coordinate Polygon Area Algorithm using inches</small>
FLOOR 2 (Living area)	716	$ \begin{aligned} & -((279.6 + 301.6) * (71.2 - 93.2) + (301.6 + 301.6) * (93.2 - 98.3) + (301.6 + 341.4) * (98.3 - 98.3) \\ & + (341.4 + 341.4) * (98.3 - 419.2) + (341.4 + 237.9) * (419.2 - 419.2) + (237.9 + 215) * (419.2 - \\ & 443.4) + (215 + 175.2) * (443.4 - 443.4) + (175.2 + 152.3) * (443.4 - 419.2) + (152.3 + 31.6) * \\ & (419.2 - 419.2) + (31.6 + 31.6) * (419.2 - 98.3) + (31.6 + 201.4) * (98.3 - 98.3) + (201.4 + 201.4) * \\ & (98.3 - 93.6) + (201.4 + 223.9) * (93.6 - 71.2) + (223.9 + 279.6) * (71.2 - 71.2)) * 0.5 * 0.00694 \end{aligned} $