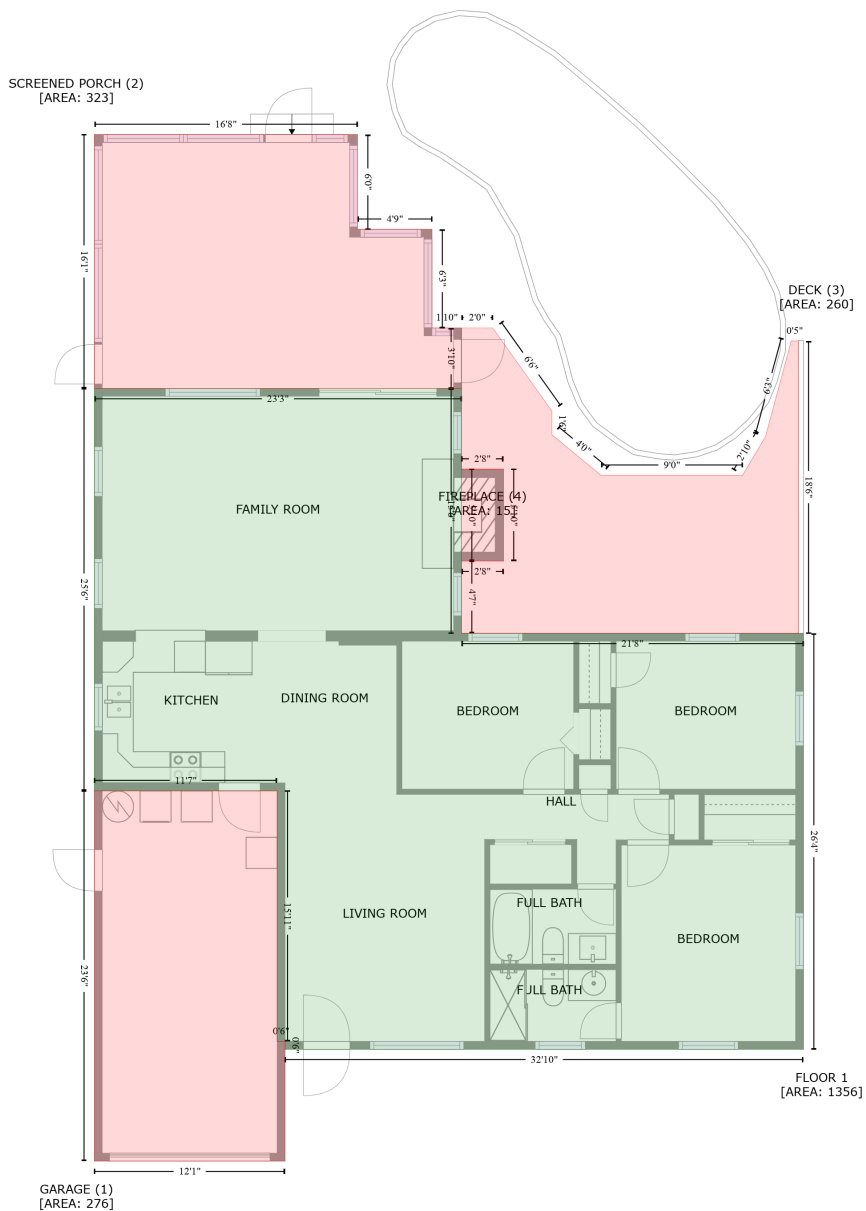


2806 Saint Croix Drive, Forest Wood Estates, Clearwater, Pinellas County, Florida, United States, 33759

Gross Living Area: 1356 sq. ft



Space	Area (sq. ft)	Calculation <small>Coordinate Polygon Area Algorithm using inches</small>
FLOOR 1 (Living area)	1356	$-((501.1 + 501.1) * (194.5 - 380.8) + (501.1 + 761.4) * (380.8 - 380.8) + (761.4 + 761.4) * (380.8 - 697.1) + (761.4 + 366.9) * (697.1 - 697.1) + (366.9 + 366.9) * (697.1 - 691.1) + (366.9 + 360.9) * (691.1 - 691.1) + (360.9 + 360.9) * (691.1 - 500.5) + (360.9 + 221.8) * (500.5 - 500.5) + (221.8 + 221.8) * (500.5 - 194.5) + (221.8 + 501.1) * (194.5 - 194.5)) * 0.5 * 0.00694$
GARAGE (Non-living area)	276	$-((360.9 + 360.9) * (500.5 - 691.1) + (360.9 + 366.9) * (691.1 - 691.1) + (366.9 + 366.9) * (691.1 - 782.1) + (366.9 + 221.8) * (782.1 - 782.1) + (221.8 + 221.8) * (782.1 - 500.5) + (221.8 + 360.9) * (500.5 - 691.1)) * 0.5 * 0.00694$

2806 Saint Croix Drive, Forest Wood Estates, Clearwater, Pinellas County, Florida, United States, 33759

Gross Living Area: 1356 sq. ft

Space	Area (sq. ft)	Calculation <small>Coordinate Polygon Area Algorithm using inches</small>
SCREENED PORCH (Non-living area)	323	$(500.5 - 500.5) * 0.5 * 0.00694$ $-((422 + 422) * (1.5 - 73.6) + (422 + 478.7) * (73.6 - 73.6) + (478.7 + 478.7) * (73.6 - 148.6) + (478.7 + 501.1) * (148.6 - 148.6) + (501.1 + 501.1) * (148.6 - 194.5) + (501.1 + 221.8) * (194.5 - 194.5) + (221.8 + 221.8) * (194.5 - 1.5) + (221.8 + 422) * (1.5 - 1.5)) * 0.5 * 0.00694$
DECK (Non-living area)	260	$-(524.9 + 569.9) * (148.6 - 211.8) + (569.9 + 569.9) * (211.8 - 229.8) + (569.9 + 607.3) * (229.8 - 260.6) + (607.3 + 714.9) * (260.6 - 260.6) + (714.9 + 732.4) * (260.6 - 231.3) + (732.4 + 752) * (231.3 - 158.5) + (752 + 757.4) * (158.5 - 158.5) + (757.4 + 757.4) * (158.5 - 380.8) + (757.4 + 501.1) * (380.8 - 380.8) + (501.1 + 501.1) * (380.8 - 325.8) + (501.1 + 533) * (325.8 - 325.8) + (533 + 533) * (325.8 - 256) + (533 + 501.1) * (256 - 256) + (501.1 + 501.1) * (256 - 148.6) + (501.1 + 524.9) * (148.6 - 148.6)) * 0.5 * 0.00694$
FIREPLACE (Non-living area)	15	$-((533 + 533) * (256 - 325.8) + (533 + 501.1) * (325.8 - 325.8) + (501.1 + 501.1) * (325.8 - 256) + (501.1 + 533) * (256 - 256)) * 0.5 * 0.00694$