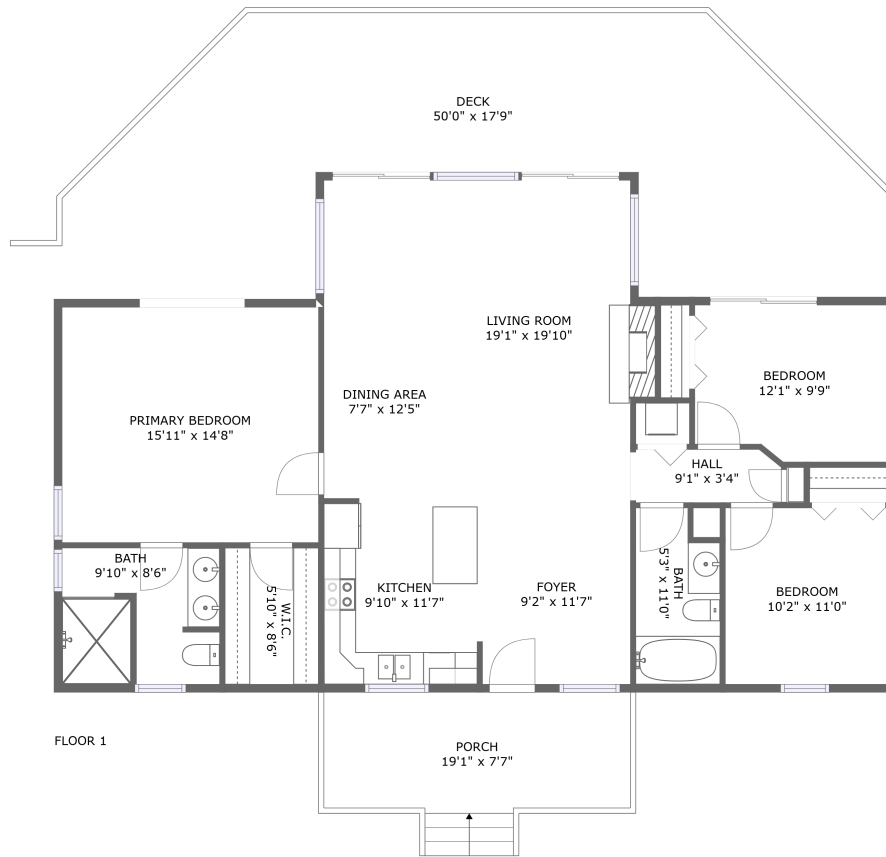
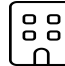
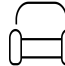



170 Stoney Creek Drive, Nebo, McDowell County, North Carolina, United States, 28761

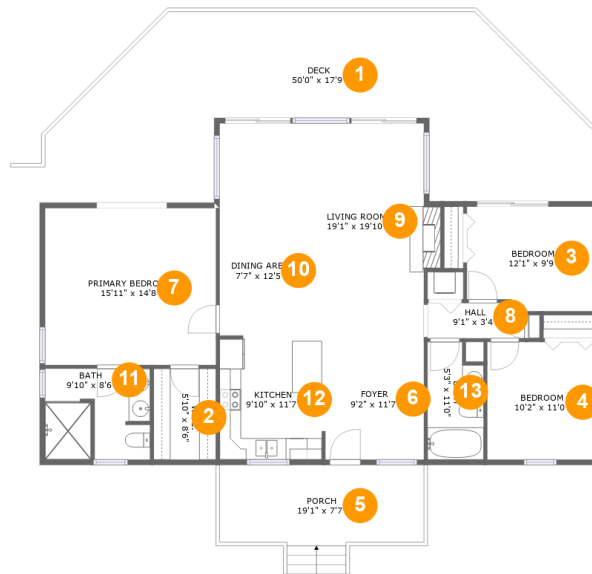


Property Summary

 **0** garages  **3** bedrooms  **2** bathrooms  **0** half baths

 **1** floors  **1,446** Gross Living Area sqft  **2,212** total sqft

170 Stoney Creek Drive, Nebo, McDowell County, North Carolina, United States, 28761



Room Dimensions

Floor 1

Total sqft: 2212

Living area: 1446

#	Room name	Dimensions	Area (sqft)	Counted as Living Area
1	Deck	50'0" x 17'9"	626 sq. ft	No
2	W.i.c.	5'10" x 8'6"	49 sq. ft	Yes
3	Bedroom	12'1" x 9'9"	113 sq. ft	Yes
4	Bedroom	10'2" x 11'0"	112 sq. ft	Yes
5	Porch	19'1" x 7'7"	140 sq. ft	No
6	Foyer	9'2" x 11'7"	107 sq. ft	Yes
7	Primary Bedroom	15'11" x 14'8"	234 sq. ft	Yes
8	Hall	9'1" x 3'4"	29 sq. ft	Yes
9	Living Room	19'1" x 19'10"	294 sq. ft	Yes
10	Dining Area	7'7" x 12'5"	94 sq. ft	Yes
11	Bath	9'10" x 8'6"	80 sq. ft	Yes

Scan captured on Thu, 19 Sep 2024 19:32:42 GMT

Information is calculated by CubiCasa technology; deemed highly reliable but not guaranteed.

**170 Stoney Creek Drive, Nebo, McDowell County,
North Carolina, United States, 28761**

#	Room name	Dimensions	Area (sqft)	Counted as Living Area
12	Kitchen	9'10" x 11'7"	113 sq. ft	Yes
13	Bath	5'3" x 11'0"	53 sq. ft	Yes

170 Stoney Creek Drive, Nebo, McDowell County, North Carolina, United States, 28761

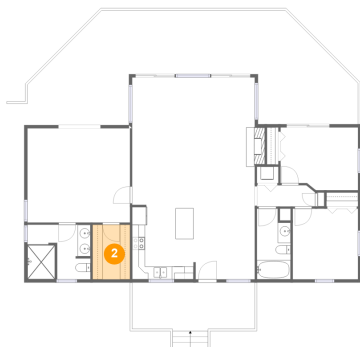
1 Floor 1 - Deck



Dimensions: 50'0" x 17'9"
Area: 626 sq. ft
Counted as Living Area: No

Heated: No
Finished: Yes
Enclosed: No
Contiguous: Yes
Permitted: Yes
Wet Space: No
Addition: No
Conversion: No

2 Floor 1 - W.i.c.



Dimensions: 5'10" x 8'6"
Area: 49 sq. ft
Counted as Living Area:
Yes

Heated: Yes
Finished: Yes
Enclosed: Yes
Contiguous:
Yes
Permitted: Yes
Wet Space: No
Addition: No
Conversion: No

170 Stoney Creek Drive, Nebo, McDowell County, North Carolina, United States, 28761

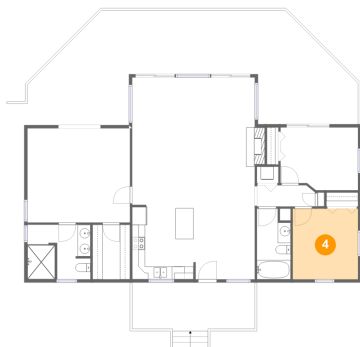
3 Floor 1 - Bedroom



Dimensions: 12'1" x 9'9"
Area: 113 sq. ft
Counted as Living Area:
Yes

Heated: Yes
Finished: Yes
Enclosed: Yes
Contiguous:
Yes
Permitted: Yes
Wet Space: No
Addition: No
Conversion: No

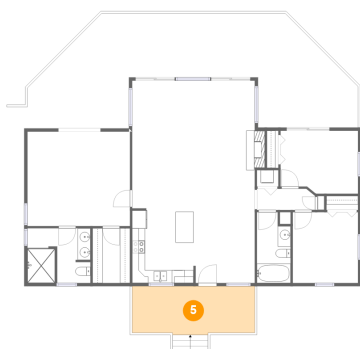
4 Floor 1 - Bedroom



Dimensions: 10'2" x 11'0"
Area: 112 sq. ft
Counted as Living Area:
Yes

Heated: Yes
Finished: Yes
Enclosed: Yes
Contiguous:
Yes
Permitted: Yes
Wet Space: No
Addition: No
Conversion: No

5 Floor 1 - Porch

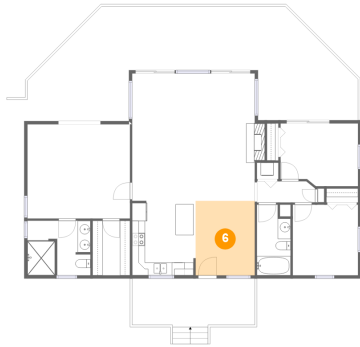


Dimensions: 19'1" x 7'7"
Area: 140 sq. ft
Counted as Living Area: No

Heated: No
Finished: Yes
Enclosed: No
Contiguous: Yes
Permitted: Yes
Wet Space: No
Addition: No
Conversion: No

170 Stoney Creek Drive, Nebo, McDowell County, North Carolina, United States, 28761

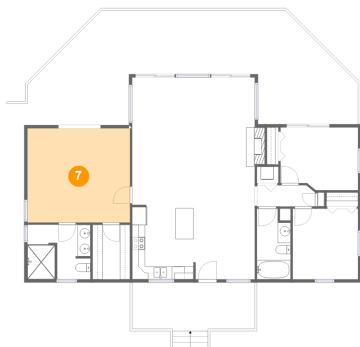
6 Floor 1 - Foyer



Dimensions: 9'2" x 11'7"
Area: 107 sq. ft
Counted as Living Area:
Yes

Heated: Yes
Finished: Yes
Enclosed: Yes
Contiguous:
Yes
Permitted: Yes
Wet Space: No
Addition: No
Conversion: No

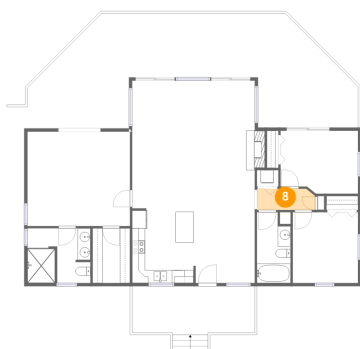
7 Floor 1 - Primary Bedroom



Dimensions: 15'11" x 14'8"
Area: 234 sq. ft
Counted as Living Area:
Yes

Heated: Yes
Finished: Yes
Enclosed: Yes
Contiguous:
Yes
Permitted: Yes
Wet Space: No
Addition: No
Conversion: No

8 Floor 1 - Hall

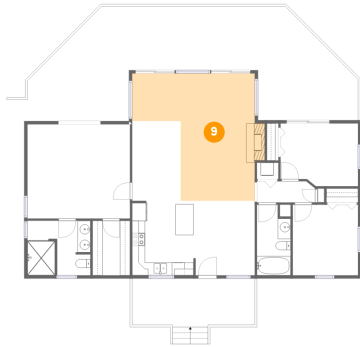


Dimensions: 9'1" x 3'4"
Area: 29 sq. ft
Counted as Living Area:
Yes

Heated: Yes
Finished: Yes
Enclosed: Yes
Contiguous:
Yes
Permitted: Yes
Wet Space: No
Addition: No
Conversion: No

170 Stoney Creek Drive, Nebo, McDowell County, North Carolina, United States, 28761

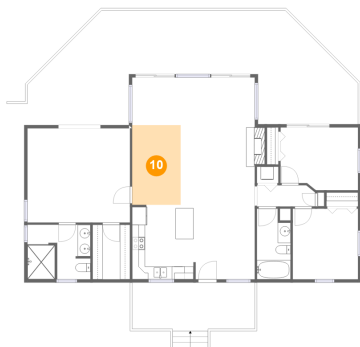
9 Floor 1 - Living Room



Dimensions: 19'1" x 19'10"
Area: 294 sq. ft
Counted as Living Area:
Yes

Heated: Yes
Finished: Yes
Enclosed: Yes
Contiguous:
Yes
Permitted: Yes
Wet Space: No
Addition: No
Conversion: No

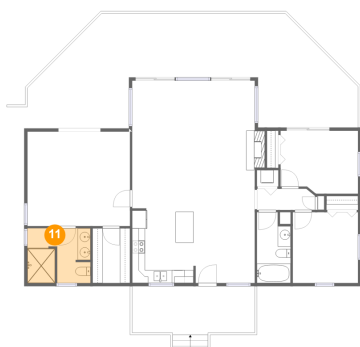
10 Floor 1 - Dining Area



Dimensions: 7'7" x 12'5"
Area: 94 sq. ft
Counted as Living Area:
Yes

Heated: Yes
Finished: Yes
Enclosed: Yes
Contiguous:
Yes
Permitted: Yes
Wet Space: No
Addition: No
Conversion: No

11 Floor 1 - Bath



Dimensions: 9'10" x 8'6"
Area: 80 sq. ft
Counted as Living Area:
Yes

Heated: Yes
Finished: Yes
Enclosed: Yes
Contiguous:
Yes
Permitted: Yes
Wet Space: Yes
Addition: No
Conversion: No

**170 Stoney Creek Drive, Nebo, McDowell County,
North Carolina, United States, 28761**

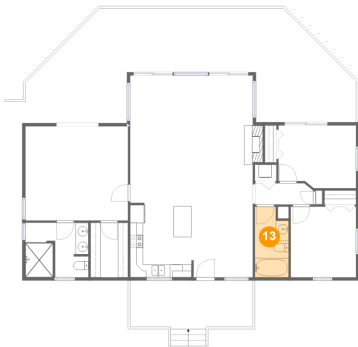
12 Floor 1 - Kitchen



Dimensions: 9'10" x 11'7"
Area: 113 sq. ft
Counted as Living Area:
Yes

Heated: Yes
Finished: Yes
Enclosed: Yes
Contiguous:
Yes
Permitted: Yes
Wet Space: No
Addition: No
Conversion: No

13 Floor 1 - Bath



Dimensions: 5'3" x 11'0"
Area: 53 sq. ft
Counted as Living Area:
Yes

Heated: Yes
Finished: Yes
Enclosed: Yes
Contiguous:
Yes
Permitted: Yes
Wet Space: Yes
Addition: No
Conversion: No