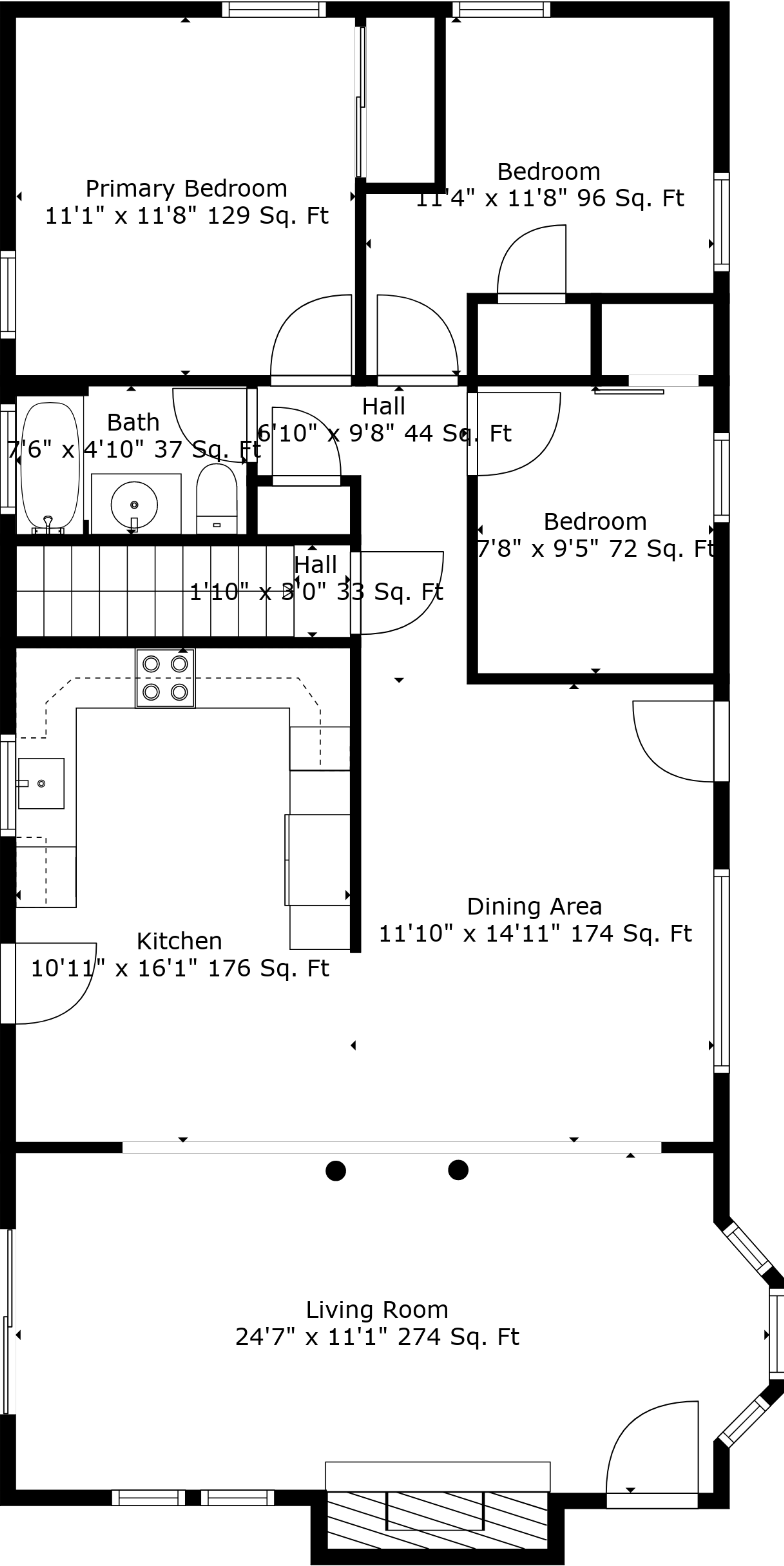


Basement
22'9" x 36'8" 835 Sq. Ft

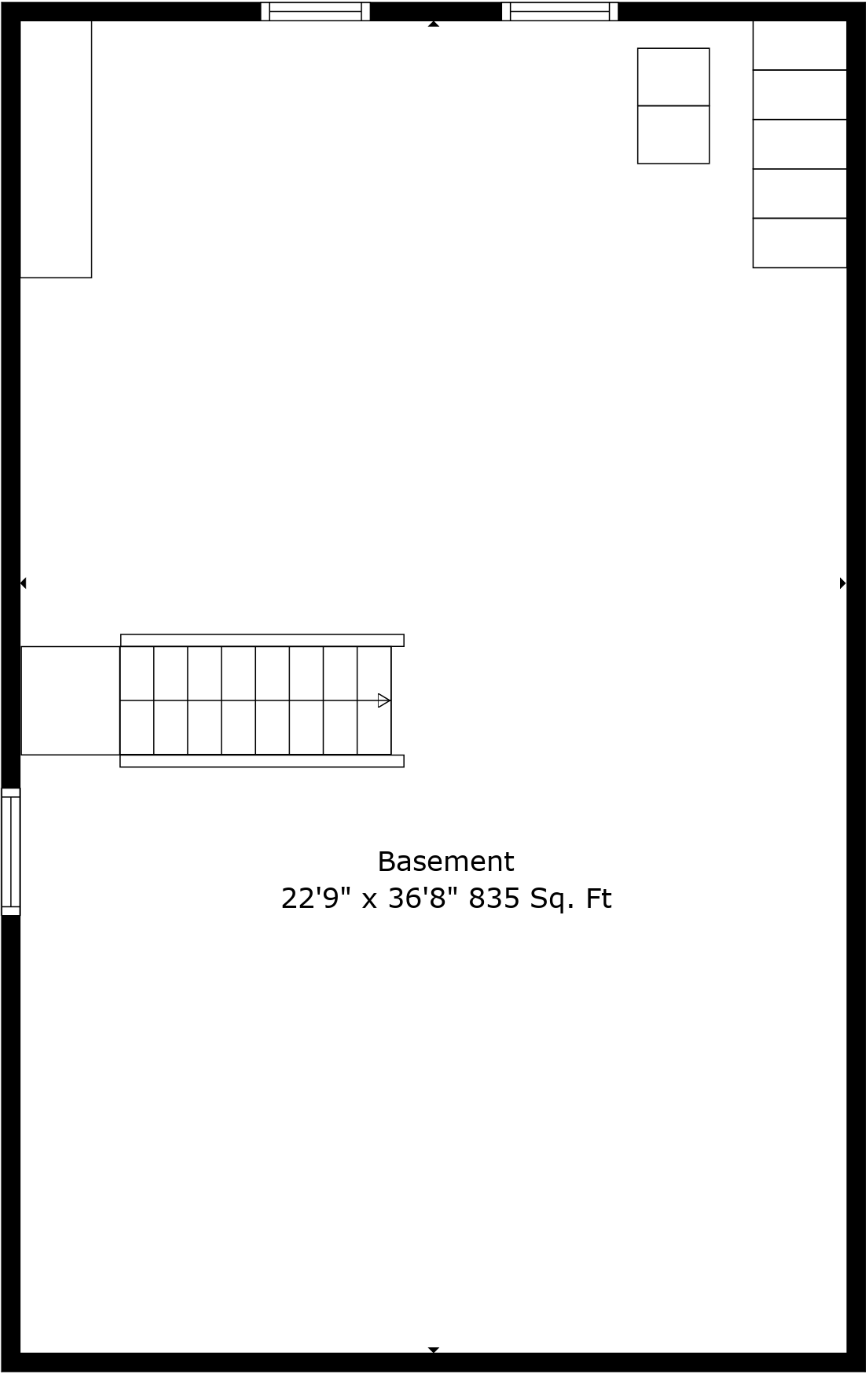
TOTAL: 1107 sq. ft
BELOW GROUND: 0 sq. ft, FLOOR 2: 1107 sq. ft
EXCLUDED AREAS: BASEMENT: 835 sq. ft, FIREPLACE: 15 sq. ft

Measurements Are Deemed Highly Reliable But Not Guaranteed.

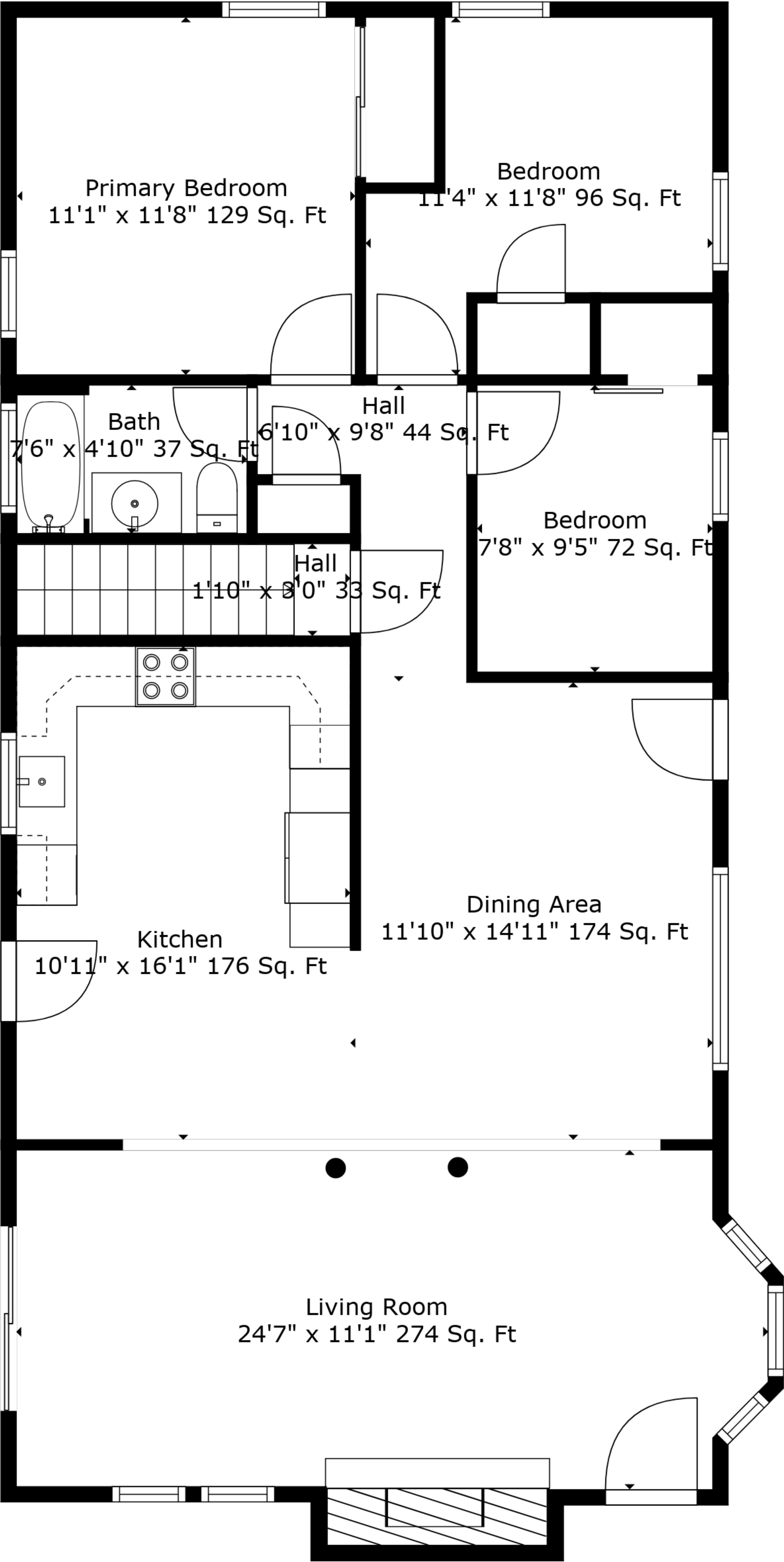


TOTAL: 1107 sq. ft
BELOW GROUND: 0 sq. ft, FLOOR 2: 1107 sq. ft
EXCLUDED AREAS: BASEMENT: 835 sq. ft, FIREPLACE: 15 sq. ft

Measurements Are Deemed Highly Reliable But Not Guaranteed.



Floor 1



Floor 2

TOTAL: 1107 sq. ft
BELOW GROUND: 0 sq. ft, FLOOR 2: 1107 sq. ft
EXCLUDED AREAS: BASEMENT: 835 sq. ft, FIREPLACE: 15 sq. ft

Measurements Are Deemed Highly Reliable But Not Guaranteed.