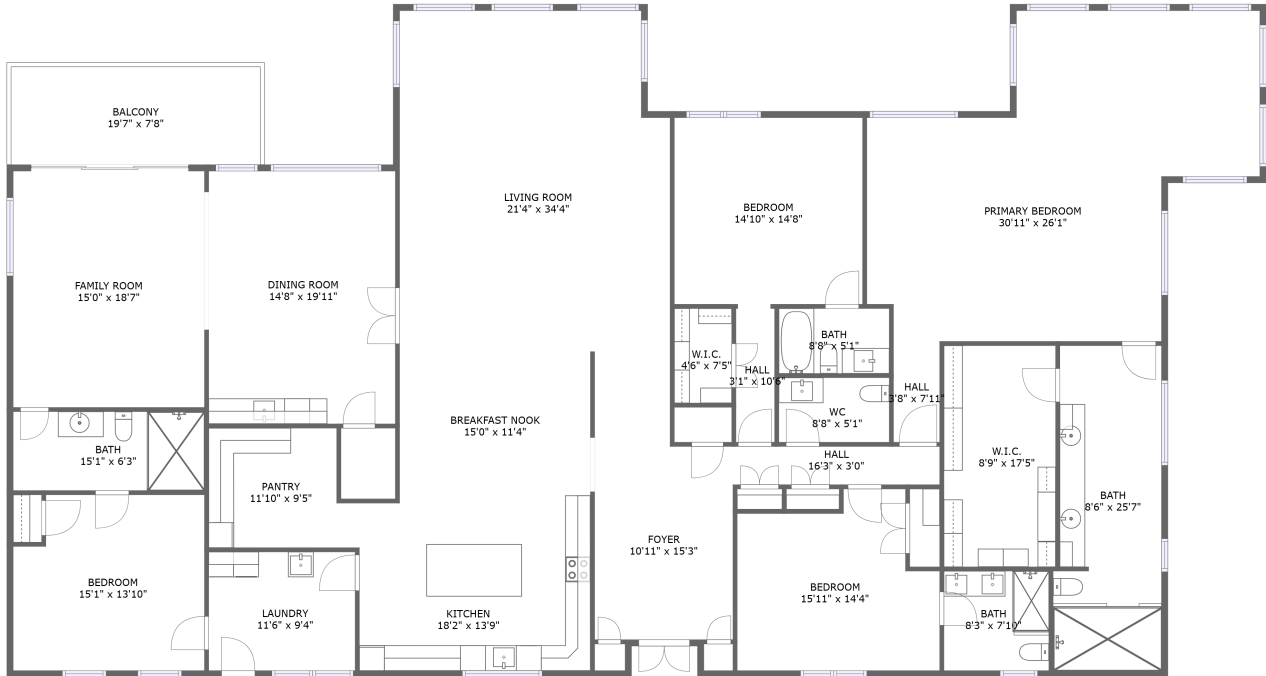


# 4950 Gulf Boulevard, Downtown St. Pete Beach, St. Pete Beach, Pinellas County, Florida, United

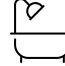



FLOOR 1

## Property Summary

 **0** garages

 **4** bedrooms

 **4** bathrooms

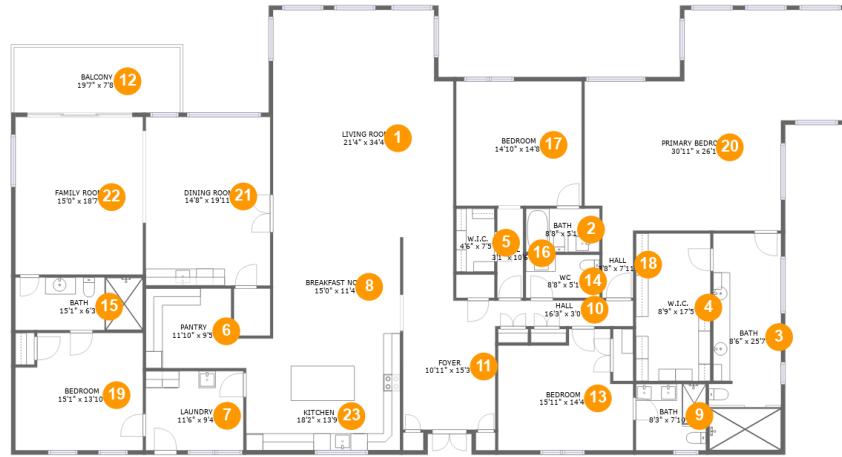
 **1** half baths

 **1** floors

 **4,152** Gross Living Area sqft

 **4,303** total sqft

# 4950 Gulf Boulevard, Downtown St. Pete Beach, St. Pete Beach, Pinellas County, Florida, United



## Room Dimensions

Floor 1

Total sqft: 4303

Living area: 4152

#	Room name	Dimensions	Area (sqft)	Counted as Living Area
1	Living Room	21'4" x 34'4"	597 sq. ft	Yes
2	Bath	8'8" x 5'1"	44 sq. ft	Yes
3	Bath	8'6" x 25'7"	208 sq. ft	Yes
4	W.i.c.	8'9" x 17'5"	153 sq. ft	Yes
5	W.i.c.	4'6" x 7'5"	34 sq. ft	Yes
6	Pantry	11'10" x 9'5"	101 sq. ft	Yes
7	Laundry	11'6" x 9'4"	108 sq. ft	Yes
8	Breakfast Nook	15'0" x 11'4"	170 sq. ft	Yes
9	Bath	8'3" x 7'10"	65 sq. ft	Yes
10	Hall	16'3" x 3'0"	49 sq. ft	Yes
11	Foyer	10'11" x 15'3"	166 sq. ft	Yes

Scan captured on Wed, 28 Aug 2024 17:59:31 GMT

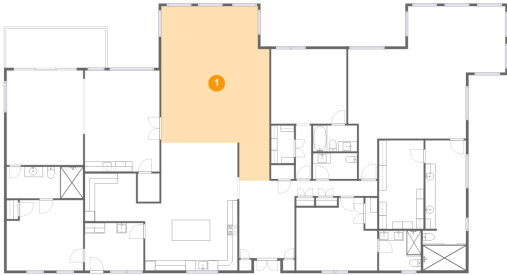
Information is calculated by CubiCasa technology; deemed highly reliable but not guaranteed.

**4950 Gulf Boulevard, Downtown St. Pete Beach,  
St. Pete Beach, Pinellas County, Florida, United**

#	Room name	Dimensions	Area (sqft)	Counted as Living Area
12	Balcony	19'7" x 7'8"	151 sq. ft	No
13	Bedroom	15'11" x 14'4"	194 sq. ft	Yes
14	Wc	8'8" x 5'1"	44 sq. ft	Yes
15	Bath	15'1" x 6'3"	94 sq. ft	Yes
16	Hall	3'1" x 10'6"	32 sq. ft	Yes
17	Bedroom	14'10" x 14'8"	218 sq. ft	Yes
18	Hall	3'8" x 7'11"	29 sq. ft	Yes
19	Bedroom	15'1" x 13'10"	198 sq. ft	Yes
20	Primary Bedroom	30'11" x 26'1"	600 sq. ft	Yes
21	Dining Room	14'8" x 19'11"	293 sq. ft	Yes
22	Family Room	15'0" x 18'7"	280 sq. ft	Yes
23	Kitchen	18'2" x 13'9"	249 sq. ft	Yes

# 4950 Gulf Boulevard, Downtown St. Pete Beach, St. Pete Beach, Pinellas County, Florida, United

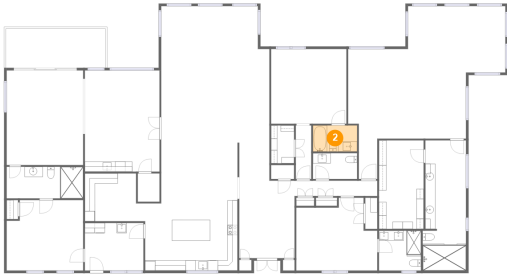
## 1 Floor 1 - Living Room



**Dimensions:** 21'4" x 34'4"  
**Area:** 597 sq. ft  
**Counted as Living Area:**  
Yes

**Heated:** Yes  
**Finished:** Yes  
**Enclosed:** Yes  
**Contiguous:**  
Yes  
**Permitted:** Yes  
**Wet Space:** No  
**Addition:** No  
**Conversion:** No

## 2 Floor 1 - Bath



**Dimensions:** 8'8" x 5'1"  
**Area:** 44 sq. ft  
**Counted as Living Area:**  
Yes

**Heated:** Yes  
**Finished:** Yes  
**Enclosed:** Yes  
**Contiguous:**  
Yes  
**Permitted:** Yes  
**Wet Space:** Yes  
**Addition:** No  
**Conversion:** No

# 4950 Gulf Boulevard, Downtown St. Pete Beach, St. Pete Beach, Pinellas County, Florida, United

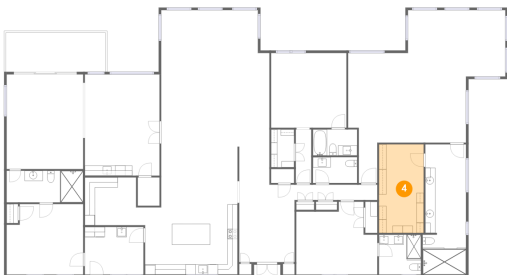
## 3 Floor 1 - Bath



Dimensions: 8'6" x 25'7"  
Area: 208 sq. ft  
Counted as Living Area:  
Yes

Heated: Yes  
Finished: Yes  
Enclosed: Yes  
Contiguous:  
Yes  
Permitted: Yes  
Wet Space: Yes  
Addition: No  
Conversion: No

## 4 Floor 1 - W.i.c.



Dimensions: 8'9" x 17'5"  
Area: 153 sq. ft  
Counted as Living Area:  
Yes

Heated: Yes  
Finished: Yes  
Enclosed: Yes  
Contiguous:  
Yes  
Permitted: Yes  
Wet Space: No  
Addition: No  
Conversion: No

## 5 Floor 1 - W.i.c.



Dimensions: 4'6" x 7'5"  
Area: 34 sq. ft  
Counted as Living Area:  
Yes

Heated: Yes  
Finished: Yes  
Enclosed: Yes  
Contiguous:  
Yes  
Permitted: Yes  
Wet Space: No  
Addition: No  
Conversion: No

# 4950 Gulf Boulevard, Downtown St. Pete Beach, St. Pete Beach, Pinellas County, Florida, United

## 6 Floor 1 - Pantry



Dimensions: 11'10" x 9'5"  
Area: 101 sq. ft  
Counted as Living Area:  
Yes

Heated: Yes  
Finished: Yes  
Enclosed: Yes  
Contiguous:  
Yes  
Permitted: Yes  
Wet Space: No  
Addition: No  
Conversion: No

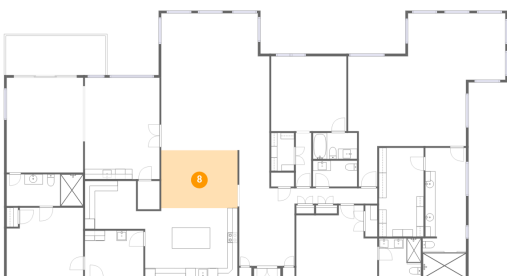
## 7 Floor 1 - Laundry



Dimensions: 11'6" x 9'4"  
Area: 108 sq. ft  
Counted as Living Area:  
Yes

Heated: Yes  
Finished: Yes  
Enclosed: Yes  
Contiguous:  
Yes  
Permitted: Yes  
Wet Space: No  
Addition: No  
Conversion: No

## 8 Floor 1 - Breakfast Nook



Dimensions: 15'0" x 11'4"  
Area: 170 sq. ft  
Counted as Living Area:  
Yes

Heated: Yes  
Finished: Yes  
Enclosed: Yes  
Contiguous:  
Yes  
Permitted: Yes  
Wet Space: No  
Addition: No  
Conversion: No

# 4950 Gulf Boulevard, Downtown St. Pete Beach, St. Pete Beach, Pinellas County, Florida, United

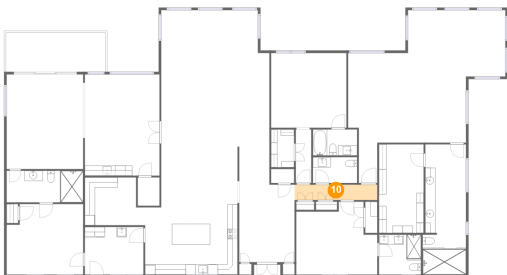
## 9 Floor 1 - Bath



Dimensions: 8'3" x 7'10"  
Area: 65 sq. ft  
Counted as Living Area:  
Yes

Heated: Yes  
Finished: Yes  
Enclosed: Yes  
Contiguous:  
Yes  
Permitted: Yes  
Wet Space: Yes  
Addition: No  
Conversion: No

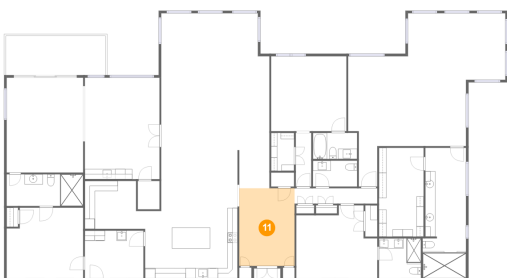
## 10 Floor 1 - Hall



Dimensions: 16'3" x 3'0"  
Area: 49 sq. ft  
Counted as Living Area:  
Yes

Heated: Yes  
Finished: Yes  
Enclosed: Yes  
Contiguous:  
Yes  
Permitted: Yes  
Wet Space: No  
Addition: No  
Conversion: No

## 11 Floor 1 - Foyer



Dimensions: 10'11" x 15'3"  
Area: 166 sq. ft  
Counted as Living Area:  
Yes

Heated: Yes  
Finished: Yes  
Enclosed: Yes  
Contiguous:  
Yes  
Permitted: Yes  
Wet Space: No  
Addition: No  
Conversion: No

# 4950 Gulf Boulevard, Downtown St. Pete Beach, St. Pete Beach, Pinellas County, Florida, United

## 12 Floor 1 - Balcony



Dimensions: 19'7" x 7'8"  
Area: 151 sq. ft  
Counted as Living Area: No

Heated: No  
Finished: Yes  
Enclosed: No  
Contiguous: Yes  
Permitted: Yes  
Wet Space: No  
Addition: No  
Conversion: No

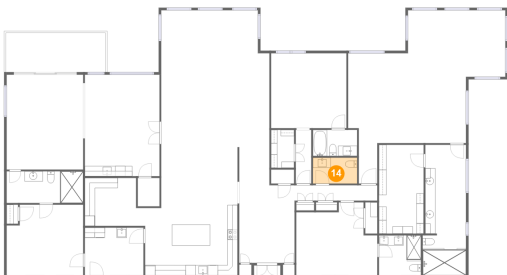
## 13 Floor 1 - Bedroom



Dimensions: 15'11" x 14'4"  
Area: 194 sq. ft  
Counted as Living Area:  
Yes

Heated: Yes  
Finished: Yes  
Enclosed: Yes  
Contiguous:  
Yes  
Permitted: Yes  
Wet Space: No  
Addition: No  
Conversion: No

## 14 Floor 1 - Wc



Dimensions: 8'8" x 5'1"  
Area: 44 sq. ft  
Counted as Living Area:  
Yes

Heated: Yes  
Finished: Yes  
Enclosed: Yes  
Contiguous:  
Yes  
Permitted: Yes  
Wet Space: Yes  
Addition: No  
Conversion: No



# 4950 Gulf Boulevard, Downtown St. Pete Beach, St. Pete Beach, Pinellas County, Florida, United

## 15 Floor 1 - Bath



Dimensions: 15'1" x 6'3"  
Area: 94 sq. ft  
Counted as Living Area:  
Yes

Heated: Yes  
Finished: Yes  
Enclosed: Yes  
Contiguous:  
Yes  
Permitted: Yes  
Wet Space: Yes  
Addition: No  
Conversion: No

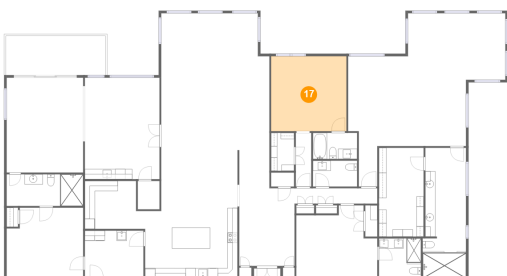
## 16 Floor 1 - Hall



Dimensions: 3'1" x 10'6"  
Area: 32 sq. ft  
Counted as Living Area:  
Yes

Heated: Yes  
Finished: Yes  
Enclosed: Yes  
Contiguous:  
Yes  
Permitted: Yes  
Wet Space: No  
Addition: No  
Conversion: No

## 17 Floor 1 - Bedroom



Dimensions: 14'10" x 14'8"  
Area: 218 sq. ft  
Counted as Living Area:  
Yes

Heated: Yes  
Finished: Yes  
Enclosed: Yes  
Contiguous:  
Yes  
Permitted: Yes  
Wet Space: No  
Addition: No  
Conversion: No

# 4950 Gulf Boulevard, Downtown St. Pete Beach, St. Pete Beach, Pinellas County, Florida, United

## 18 Floor 1 - Hall



Dimensions: 3'8" x 7'11"  
Area: 29 sq. ft  
Counted as Living Area:  
Yes

Heated: Yes  
Finished: Yes  
Enclosed: Yes  
Contiguous:  
Yes  
Permitted: Yes  
Wet Space: No  
Addition: No  
Conversion: No

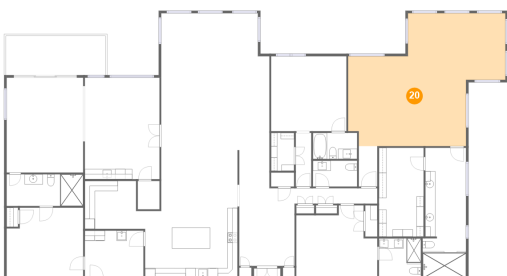
## 19 Floor 1 - Bedroom



Dimensions: 15'1" x 13'10"  
Area: 198 sq. ft  
Counted as Living Area:  
Yes

Heated: Yes  
Finished: Yes  
Enclosed: Yes  
Contiguous:  
Yes  
Permitted: Yes  
Wet Space: No  
Addition: No  
Conversion: No

## 20 Floor 1 - Primary Bedroom



Dimensions: 30'11" x 26'1"  
Area: 600 sq. ft  
Counted as Living Area:  
Yes

Heated: Yes  
Finished: Yes  
Enclosed: Yes  
Contiguous:  
Yes  
Permitted: Yes  
Wet Space: No  
Addition: No  
Conversion: No

# 4950 Gulf Boulevard, Downtown St. Pete Beach, St. Pete Beach, Pinellas County, Florida, United

## 21 Floor 1 - Dining Room



Dimensions: 14'8" x 19'11"  
Area: 293 sq. ft  
Counted as Living Area:  
Yes

Heated: Yes  
Finished: Yes  
Enclosed: Yes  
Contiguous:  
Yes  
Permitted: Yes  
Wet Space: No  
Addition: No  
Conversion: No

## 22 Floor 1 - Family Room



Dimensions: 15'0" x 18'7"  
Area: 280 sq. ft  
Counted as Living Area:  
Yes

Heated: Yes  
Finished: Yes  
Enclosed: Yes  
Contiguous:  
Yes  
Permitted: Yes  
Wet Space: No  
Addition: No  
Conversion: No

## 23 Floor 1 - Kitchen



Dimensions: 18'2" x 13'9"  
Area: 249 sq. ft  
Counted as Living Area:  
Yes

Heated: Yes  
Finished: Yes  
Enclosed: Yes  
Contiguous:  
Yes  
Permitted: Yes  
Wet Space: No  
Addition: No  
Conversion: No