


3017 Carey Ave, Cheyenne, WY, US



Property summary


 **0** Garages

 **4** Bedrooms

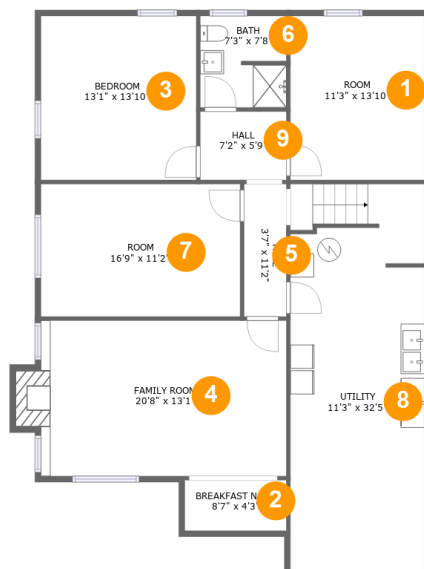
 **2** Bathrooms

 **0** Half baths

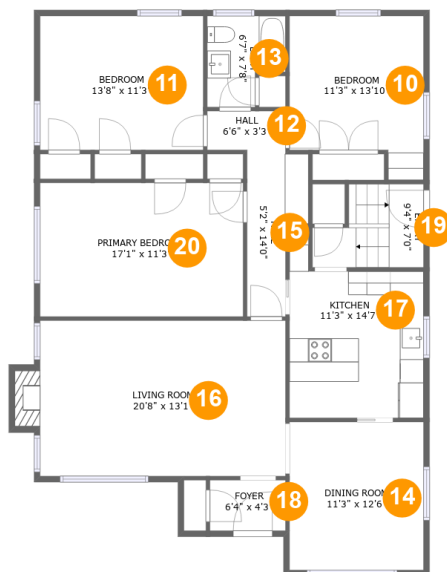
 **2** Floors

 **2,529** Gross living area sqft

 **2,943** Total sqft

3017 Carey Ave, Cheyenne, WY, US**Room dimensions****Floor 1****Total sqft: 1471 Living area: 1069**

#		Dimensions	sqft	Counted as living area
1	Room	11'3" x 13'10"	156 sq. ft	Yes
2	Nook	8'7" x 4'3"	36 sq. ft	Yes
3	Bedroom	13'1" x 13'10"	181 sq. ft	Yes
4	Living Room	20'8" x 13'1"	281 sq. ft	Yes
5	Hall	3'7" x 11'2"	40 sq. ft	Yes
6	Bath	7'3" x 7'8"	55 sq. ft	Yes
7	Room	16'9" x 11'2"	187 sq. ft	Yes
8	Utility	11'3" x 32'5"	363 sq. ft	No
9	Hall	7'2" x 5'9"	42 sq. ft	Yes

3017 Carey Ave, Cheyenne, WY, US**Room dimensions**

Floor 2

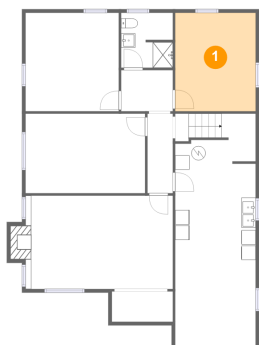
Total sqft: 1472 Living area: 1460

#		Dimensions	sqft	Counted as living area
10	Bedroom	11'3" x 13'10"	135 sq. ft	Yes
11	Bedroom	13'8" x 11'3"	155 sq. ft	Yes
12	Hall	6'6" x 3'3"	22 sq. ft	Yes
13	Bath	6'7" x 7'8"	43 sq. ft	Yes
14	Dining Room	11'3" x 12'6"	141 sq. ft	Yes
15	Hall	5'2" x 14'0"	57 sq. ft	Yes
16	Living Room	20'8" x 13'1"	280 sq. ft	Yes
17	Kitchen	11'3" x 14'7"	145 sq. ft	Yes
18	Entry	6'4" x 4'3"	27 sq. ft	Yes
19	Entry	9'4" x 7'0"	54 sq. ft	Yes
20	Bedroom	17'1" x 11'3"	192 sq. ft	Yes

Scan captured on Fri, 08 Nov 2024 13:59:58 GMT

Information is calculated by Cubicasa technology deemed highly reliable but not guaranteed.

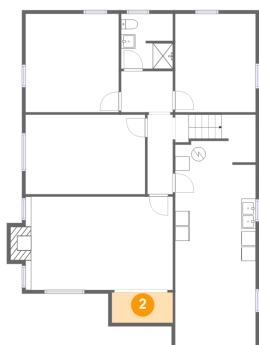
1 Floor 1 - Room



Dimensions: 11'3" x 13'10"
Area: 156 sq. ft
Counted as living area: Yes

Heated: Yes
Finished: Yes
Enclosed: Yes
Contiguous: Yes
Permitted: Yes
Wet space: No
Addition: No
Conversion: No

2 Floor 1 - Nook

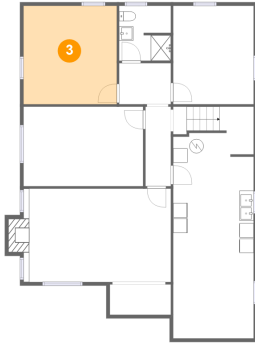


Dimensions: 8'7" x 4'3"
Area: 36 sq. ft
Counted as living area: Yes

Heated: Yes
Finished: Yes
Enclosed: Yes
Contiguous: Yes
Permitted: Yes
Wet space: No
Addition: No
Conversion: No

3017 Carey Ave, Cheyenne, WY, US

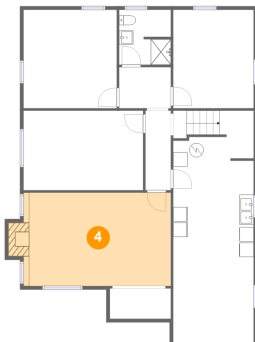
3 Floor 1 - Bedroom



Dimensions: 13'1" x 13'10"
Area: 181 sq. ft
Counted as living area: Yes

Heated: Yes
Finished: Yes
Enclosed: Yes
Contiguous: Yes
Permitted: Yes
Wet space: No
Addition: No
Conversion: No

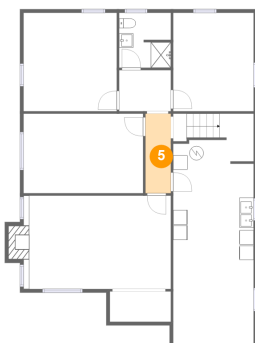
4 Floor 1 - Living Room



Dimensions: 20'8" x 13'1"
Area: 281 sq. ft
Counted as living area: Yes

Heated: Yes
Finished: Yes
Enclosed: Yes
Contiguous: Yes
Permitted: Yes
Wet space: No
Addition: No
Conversion: No

5 Floor 1 - Hall

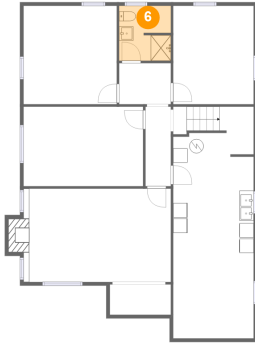


Dimensions: 3'7" x 11'2"
Area: 40 sq. ft
Counted as living area: Yes

Heated: Yes
Finished: Yes
Enclosed: Yes
Contiguous: Yes
Permitted: Yes
Wet space: No
Addition: No
Conversion: No

3017 Carey Ave, Cheyenne, WY, US

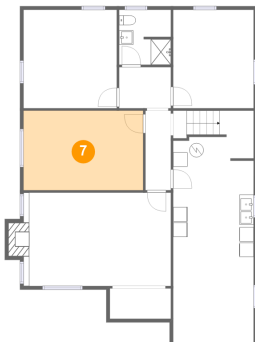
6 Floor 1 - Bath



Dimensions: 7'3" x 7'8"
Area: 55 sq. ft
Counted as living area: Yes

Heated: Yes
Finished: Yes
Enclosed: Yes
Contiguous: Yes
Permitted: Yes
Wet space: Yes
Addition: No
Conversion: No

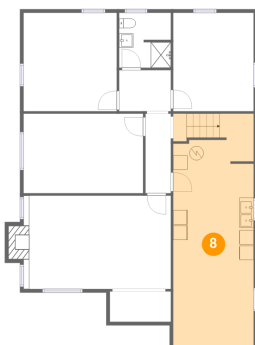
7 Floor 1 - Room



Dimensions: 16'9" x 11'2"
Area: 187 sq. ft
Counted as living area: Yes

Heated: Yes
Finished: Yes
Enclosed: Yes
Contiguous: Yes
Permitted: Yes
Wet space: No
Addition: No
Conversion: No

8 Floor 1 - Utility

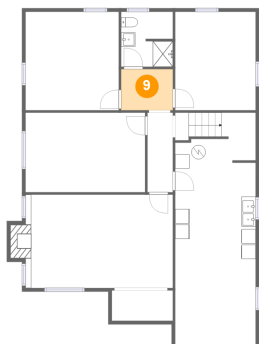


Dimensions: 11'3" x 32'5"
Area: 363 sq. ft
Counted as living area: No

Heated: Yes
Finished: No
Enclosed: Yes
Contiguous: Yes
Permitted: Yes
Wet space: No
Addition: No
Conversion: No

3017 Carey Ave, Cheyenne, WY, US

9 Floor 1 - Hall



Dimensions: 7'2" x 5'9"
Area: 42 sq. ft
Counted as living area: Yes

Heated: Yes
Finished: Yes
Enclosed: Yes
Contiguous: Yes
Permitted: Yes
Wet space: No
Addition: No
Conversion: No

10 Floor 2 - Bedroom



Dimensions: 11'3" x 13'10"
Area: 135 sq. ft
Counted as living area: Yes

Heated: Yes
Finished: Yes
Enclosed: Yes
Contiguous: Yes
Permitted: Yes
Wet space: No
Addition: No
Conversion: No

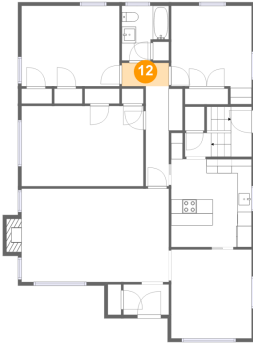
11 Floor 2 - Bedroom



Dimensions: 13'8" x 11'3"
Area: 155 sq. ft
Counted as living area: Yes

Heated: Yes
Finished: Yes
Enclosed: Yes
Contiguous: Yes
Permitted: Yes
Wet space: No
Addition: No
Conversion: No

12 Floor 2 - Hall



Dimensions: 6'6" x 3'3"
Area: 22 sq. ft
Counted as living area: Yes

Heated: Yes
Finished: Yes
Enclosed: Yes
Contiguous: Yes
Permitted: Yes
Wet space: No
Addition: No
Conversion: No

13 Floor 2 - Bath



Dimensions: 6'7" x 7'8"
Area: 43 sq. ft
Counted as living area: Yes

Heated: Yes
Finished: Yes
Enclosed: Yes
Contiguous: Yes
Permitted: Yes
Wet space: Yes
Addition: No
Conversion: No

14 Floor 2 - Dining Room



Dimensions: 11'3" x 12'6"
Area: 141 sq. ft
Counted as living area: Yes

Heated: Yes
Finished: Yes
Enclosed: Yes
Contiguous: Yes
Permitted: Yes
Wet space: No
Addition: No
Conversion: No

15 Floor 2 - Hall



Dimensions: 5'2" x 14'0"
Area: 57 sq. ft
Counted as living area: Yes

Heated: Yes
Finished: Yes
Enclosed: Yes
Contiguous: Yes
Permitted: Yes
Wet space: No
Addition: No
Conversion: No

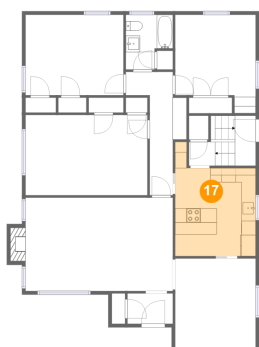
16 Floor 2 - Living Room



Dimensions: 20'8" x 13'1"
Area: 280 sq. ft
Counted as living area: Yes

Heated: Yes
Finished: Yes
Enclosed: Yes
Contiguous: Yes
Permitted: Yes
Wet space: No
Addition: No
Conversion: No

17 Floor 2 - Kitchen



Dimensions: 11'3" x 14'7"
Area: 145 sq. ft
Counted as living area: Yes

Heated: Yes
Finished: Yes
Enclosed: Yes
Contiguous: Yes
Permitted: Yes
Wet space: No
Addition: No
Conversion: No

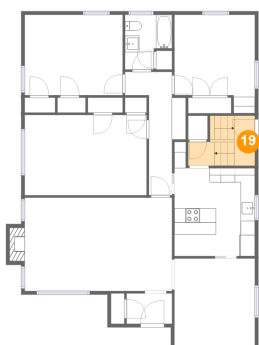
18 Floor 2 - Entry



Dimensions: 6'4" x 4'3"
Area: 27 sq. ft
Counted as living area: Yes

Heated: Yes
Finished: Yes
Enclosed: Yes
Contiguous: Yes
Permitted: Yes
Wet space: No
Addition: No
Conversion: No

19 Floor 2 - Entry



Dimensions: 9'4" x 7'0"
Area: 54 sq. ft
Counted as living area: Yes

Heated: Yes
Finished: Yes
Enclosed: Yes
Contiguous: Yes
Permitted: Yes
Wet space: No
Addition: No
Conversion: No

20 Floor 2 - Bedroom



Dimensions: 17'1" x 11'3"
Area: 192 sq. ft
Counted as living area: Yes

Heated: Yes
Finished: Yes
Enclosed: Yes
Contiguous: Yes
Permitted: Yes
Wet space: No
Addition: No
Conversion: No