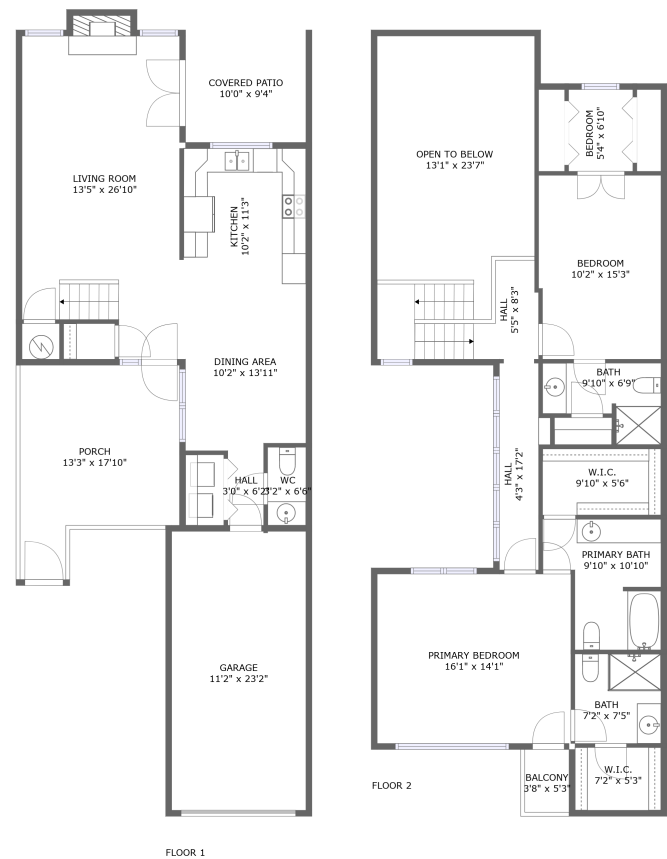





3110 Pin Oak Court, Brookhaven, Farmers Branch,
Dallas County, Texas, United States, 75234





Property summary


 **1** Garages


 **3** Bedrooms

 **3** Bathrooms

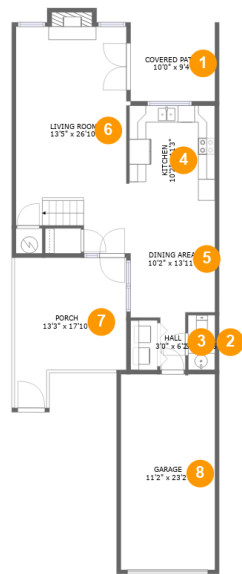
 **1** Half baths

 **2** Floors

 **1,565** Gross living area sqft

 **2,644** Total sqft

3110 Pin Oak Court, Brookhaven, Farmers Branch,
Dallas County, Texas, United States, 75234



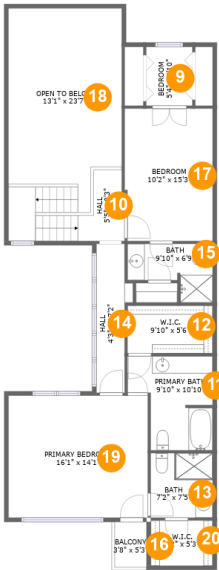
Room dimensions

Floor 1

Total sqft: 1327 Living area: 744

#		Dimensions	sqft	Counted as living area
1	Outdoor	10'0" x 9'4"	93 sq. ft	No
2	Bath	3'2" x 6'6"	21 sq. ft	Yes
3	Hall	3'0" x 6'2"	18 sq. ft	Yes
4	Kitchen	10'2" x 11'3"	114 sq. ft	Yes
5	Dining Room	10'2" x 13'11"	138 sq. ft	Yes
6	Living Room	13'5" x 26'10"	336 sq. ft	Yes
7	Outdoor	13'3" x 17'10"	193 sq. ft	No
8	Garage	11'2" x 23'2"	259 sq. ft	No

3110 Pin Oak Court, Brookhaven, Farmers Branch,
Dallas County, Texas, United States, 75234



Room dimensions

Floor 2 Total sqft: 1317 Living area: 821

#		Dimensions	sqft	Counted as living area
9	Bedroom	5'4" x 6'10"	36 sq. ft	No
10	Hall	5'5" x 8'3"	90 sq. ft	Yes
11	Bath	9'10" x 10'10"	88 sq. ft	No
12	Cl	9'10" x 5'6"	54 sq. ft	No
13	Bath	7'2" x 7'5"	53 sq. ft	Yes
14	Hall	4'3" x 17'2"	58 sq. ft	Yes
15	Bath	9'10" x 6'9"	51 sq. ft	Yes
16	Outdoor	3'8" x 5'3"	19 sq. ft	No
17	Bedroom	10'2" x 15'3"	154 sq. ft	Yes
18	Open To Below	13'1" x 23'7"	263 sq. ft	No
19	Bedroom	16'1" x 14'1"	227 sq. ft	Yes

**3110 Pin Oak Court, Brookhaven, Farmers Branch,
Dallas County, Texas, United States, 75234**

#		Dimensions	sqft	Counted as living area
20	Cl	7'2" x 5'3"	37 sq. ft	Yes

3110 Pin Oak Court, Brookhaven, Farmers Branch,
Dallas County, Texas, United States, 75234

1 Floor 1 - Outdoor



Dimensions: 10'0" x 9'4"
Area: 93 sq. ft
Counted as living area: No

Heated: No
Finished: Yes
Enclosed: No
Contiguous: Yes
Permitted: Yes
Wet space: No
Addition: No
Conversion: No

2 Floor 1 - Bath



Dimensions: 3'2" x 6'6"
Area: 21 sq. ft
Counted as living area: Yes

Heated: Yes
Finished: Yes
Enclosed: Yes
Contiguous: Yes
Permitted: Yes
Wet space: Yes
Addition: No
Conversion: No

**3110 Pin Oak Court, Brookhaven, Farmers Branch,
Dallas County, Texas, United States, 75234**

3 Floor 1 - Hall



Dimensions: 3'0" x 6'2"
Area: 18 sq. ft
Counted as living area: Yes

Heated: Yes
Finished: Yes
Enclosed: Yes
Contiguous: Yes
Permitted: Yes
Wet space: No
Addition: No
Conversion: No

4 Floor 1 - Kitchen



Dimensions: 10'2" x 11'3"
Area: 114 sq. ft
Counted as living area: Yes

Heated: Yes
Finished: Yes
Enclosed: Yes
Contiguous: Yes
Permitted: Yes
Wet space: No
Addition: No
Conversion: No

5 Floor 1 - Dining Room



Dimensions: 10'2" x 13'11"
Area: 138 sq. ft
Counted as living area: Yes

Heated: Yes
Finished: Yes
Enclosed: Yes
Contiguous: Yes
Permitted: Yes
Wet space: No
Addition: No
Conversion: No

**3110 Pin Oak Court, Brookhaven, Farmers Branch,
Dallas County, Texas, United States, 75234**

6 Floor 1 - Living Room



Dimensions: 13'5" x 26'10"
Area: 336 sq. ft
Counted as living area: Yes

Heated: Yes
Finished: Yes
Enclosed: Yes
Contiguous: Yes
Permitted: Yes
Wet space: No
Addition: No
Conversion: No

7 Floor 1 - Outdoor



Dimensions: 13'3" x 17'10"
Area: 193 sq. ft
Counted as living area: No

Heated: No
Finished: Yes
Enclosed: No
Contiguous: Yes
Permitted: Yes
Wet space: No
Addition: No
Conversion: No

8 Floor 1 - Garage



Dimensions: 11'2" x 23'2"
Area: 259 sq. ft
Counted as living area: No

Heated: No
Finished: No
Enclosed: Yes
Contiguous: Yes
Permitted: Yes
Wet space: No
Addition: No
Conversion: No

**3110 Pin Oak Court, Brookhaven, Farmers Branch,
Dallas County, Texas, United States, 75234**

9 Floor 2 - Bedroom



Dimensions: 5'4" x 6'10"
Area: 36 sq. ft
Counted as living area: No

Heated: Yes
Finished: Yes
Enclosed: Yes
Contiguous: Yes
Permitted: Yes
Wet space: No
Addition: No
Conversion: No

10 Floor 2 - Hall



Dimensions: 5'5" x 8'3"
Area: 90 sq. ft
Counted as living area: Yes

Heated: Yes
Finished: Yes
Enclosed: Yes
Contiguous: Yes
Permitted: Yes
Wet space: No
Addition: No
Conversion: No

11 Floor 2 - Bath



Dimensions: 9'10" x 10'10"
Area: 88 sq. ft
Counted as living area: No

Heated: Yes
Finished: Yes
Enclosed: Yes
Contiguous: Yes
Permitted: Yes
Wet space: Yes
Addition: No
Conversion: No

3110 Pin Oak Court, Brookhaven, Farmers Branch,
Dallas County, Texas, United States, 75234

12 Floor 2 - Cl



Dimensions: 9'10" x 5'6"
Area: 54 sq. ft
Counted as living area: No

Heated: Yes
Finished: Yes
Enclosed: Yes
Contiguous: Yes
Permitted: Yes
Wet space: No
Addition: No
Conversion: No

13 Floor 2 - Bath



Dimensions: 7'2" x 7'5"
Area: 53 sq. ft
Counted as living area: Yes

Heated: Yes
Finished: Yes
Enclosed: Yes
Contiguous: Yes
Permitted: Yes
Wet space: Yes
Addition: No
Conversion: No

14 Floor 2 - Hall



Dimensions: 4'3" x 17'2"
Area: 58 sq. ft
Counted as living area: Yes

Heated: Yes
Finished: Yes
Enclosed: Yes
Contiguous: Yes
Permitted: Yes
Wet space: No
Addition: No
Conversion: No

**3110 Pin Oak Court, Brookhaven, Farmers Branch,
Dallas County, Texas, United States, 75234**

15 Floor 2 - Bath



Dimensions: 9'10" x 6'9"
Area: 51 sq. ft
Counted as living area: Yes

Heated: Yes
Finished: Yes
Enclosed: Yes
Contiguous: Yes
Permitted: Yes
Wet space: Yes
Addition: No
Conversion: No

16 Floor 2 - Outdoor



Dimensions: 3'8" x 5'3"
Area: 19 sq. ft
Counted as living area: No

Heated: No
Finished: Yes
Enclosed: No
Contiguous: Yes
Permitted: Yes
Wet space: No
Addition: No
Conversion: No

17 Floor 2 - Bedroom



Dimensions: 10'2" x 15'3"
Area: 154 sq. ft
Counted as living area: Yes

Heated: Yes
Finished: Yes
Enclosed: Yes
Contiguous: Yes
Permitted: Yes
Wet space: No
Addition: No
Conversion: No

**3110 Pin Oak Court, Brookhaven, Farmers Branch,
Dallas County, Texas, United States, 75234**

18 Floor 2 - Open To Below



Dimensions: 13'1" x 23'7"
Area: 263 sq. ft
Counted as living area: No

Heated: No
Finished: No
Enclosed: No
Contiguous: Yes
Permitted: No
Wet space: No
Addition: No
Conversion: No

19 Floor 2 - Bedroom



Dimensions: 16'1" x 14'1"
Area: 227 sq. ft
Counted as living area: Yes

Heated: Yes
Finished: Yes
Enclosed: Yes
Contiguous: Yes
Permitted: Yes
Wet space: No
Addition: No
Conversion: No

20 Floor 2 - Cl



Dimensions: 7'2" x 5'3"
Area: 37 sq. ft
Counted as living area: Yes

Heated: Yes
Finished: Yes
Enclosed: Yes
Contiguous: Yes
Permitted: Yes
Wet space: No
Addition: No
Conversion: No