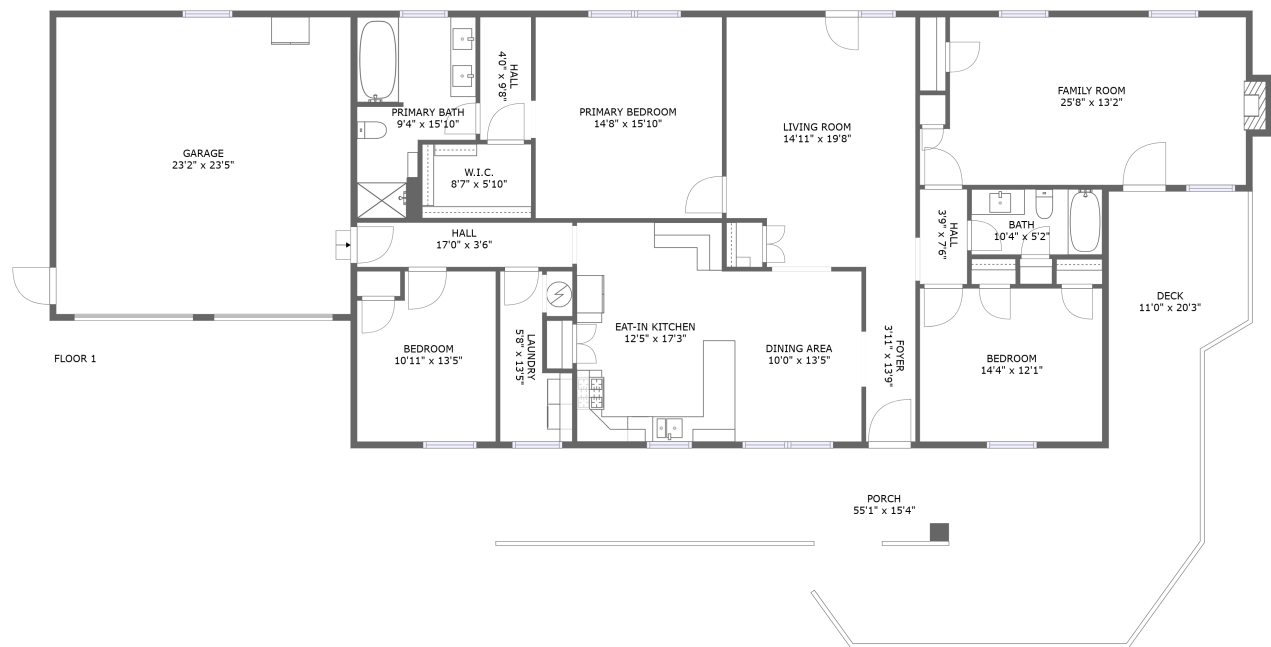


Home report

228 Artesian Lane, New Castle, Craig County, Virginia, United States, 24127



Total Area: 2113 sq. ft

Floor 1: 2113 sq. ft

Excluded: Garage 542 sq. ft, Porch 619 sq. ft, Deck 188 sq. ft, Fireplace 8 sq. ft, Walls: 138 sq. ft

Property summary

1 Floors

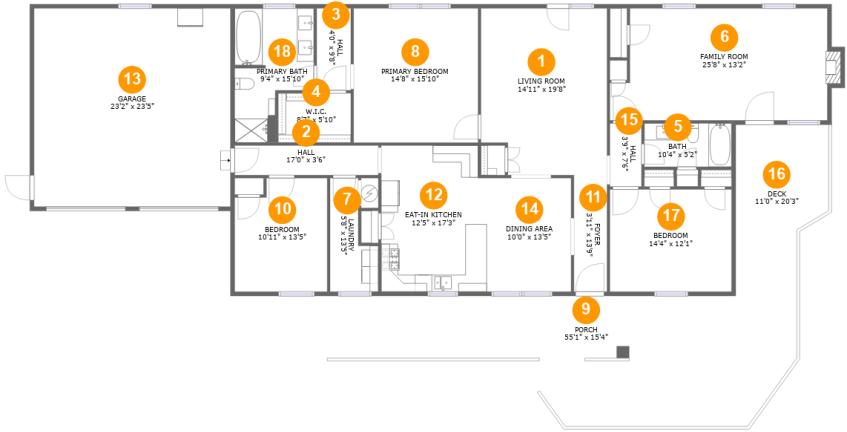
3 Bedrooms

2 Bathrooms

1 Garages

Home report

228 Artesian Lane, New Castle, Craig County, Virginia, United States, 24127



Room dimensions

Floor 1

Total:2113sqft

Excluded: 1357sqft

#		Max Dimensions	sqft	Included
1	Living Room	14'11" x 19'8"	281 sq. ft	Yes
2	Hall	17'0" x 3'6"	59 sq. ft	Yes
3	Hall	4'0" x 9'8"	39 sq. ft	Yes
4	W.I.C.	8'7" x 5'10"	50 sq. ft	Yes
5	Bath	10'4" x 5'2"	53 sq. ft	Yes
6	Family Room	25'8" x 13'2"	325 sq. ft	Yes
7	Laundry	5'8" x 13'5"	58 sq. ft	Yes
8	Primary Bedroom	14'8" x 15'10"	233 sq. ft	Yes
9	Porch	55'1" x 15'4"	619 sq. ft	No
10	Bedroom	10'11" x 13'5"	138 sq. ft	Yes
11	Foyer	3'11" x 13'9"	54 sq. ft	Yes

Home report

228 Artesian Lane, New Castle, Craig County, Virginia, United States, 24127

#		Max Dimensions	sqft	Included
12	Eat-in Kitchen	12'5" x 17'3"	211 sq. ft	Yes
13	Garage	23'2" x 23'5"	542 sq. ft	No
14	Dining Area	10'0" x 13'5"	134 sq. ft	Yes
15	Hall	3'9" x 7'6"	28 sq. ft	Yes
16	Deck	11'0" x 20'3"	188 sq. ft	No
17	Bedroom	14'4" x 12'1"	173 sq. ft	Yes
18	Primary Bath	9'4" x 15'10"	119 sq. ft	Yes

228 Artesian Lane, New Castle, Craig County, Virginia, United States, 24127

1 Floor 1 - Living Room



Max Dimensions: 14'11" x 19'8"
Calculated Area: 281 sq. ft
Included: Yes

Heated: Yes
Finished: Yes
Enclosed: Yes
Contiguous: Yes
Permitted: Yes
Wet space: No
Addition: No
Conversion: No

2 Floor 1 - Hall



Max Dimensions: 17'0" x 3'6"
Calculated Area: 59 sq. ft
Included: Yes

Heated: Yes
Finished: Yes
Enclosed: Yes
Contiguous: Yes
Permitted: Yes
Wet space: No
Addition: No
Conversion: No

228 Artesian Lane, New Castle, Craig County, Virginia, United States, 24127

3 Floor 1 - Hall



Max Dimensions: 4'0" x 9'8"
Calculated Area: 39 sq. ft
Included: Yes

Heated: Yes
Finished: Yes
Enclosed: Yes
Contiguous: Yes
Permitted: Yes
Wet space: No
Addition: No
Conversion: No

4 Floor 1 - W.I.C.



Max Dimensions: 8'7" x 5'10"
Calculated Area: 50 sq. ft
Included: Yes

Heated: Yes
Finished: Yes
Enclosed: Yes
Contiguous: Yes
Permitted: Yes
Wet space: No
Addition: No
Conversion: No

5 Floor 1 - Bath



Max Dimensions: 10'4" x 5'2"
Calculated Area: 53 sq. ft
Included: Yes

Heated: Yes
Finished: Yes
Enclosed: Yes
Contiguous: Yes
Permitted: Yes
Wet space: Yes
Addition: No
Conversion: No

228 Artesian Lane, New Castle, Craig County, Virginia, United States, 24127

6 Floor 1 - Family Room



Max Dimensions: 25'8" x 13'2"
Calculated Area: 325 sq. ft
Included: Yes

Heated: Yes
Finished: Yes
Enclosed: Yes
Contiguous: Yes
Permitted: Yes
Wet space: No
Addition: No
Conversion: No

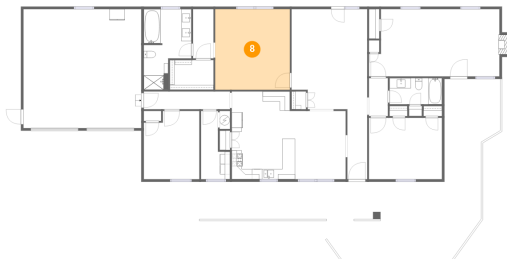
7 Floor 1 - Laundry



Max Dimensions: 5'8" x 13'5"
Calculated Area: 58 sq. ft
Included: Yes

Heated: Yes
Finished: Yes
Enclosed: Yes
Contiguous: Yes
Permitted: Yes
Wet space: No
Addition: No
Conversion: No

8 Floor 1 - Primary Bedroom

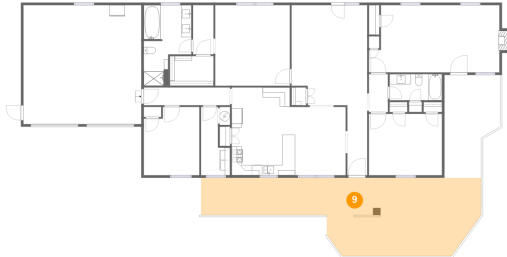


Max Dimensions: 14'8" x 15'10"
Calculated Area: 233 sq. ft
Included: Yes

Heated: Yes
Finished: Yes
Enclosed: Yes
Contiguous: Yes
Permitted: Yes
Wet space: No
Addition: No
Conversion: No

228 Artesian Lane, New Castle, Craig County, Virginia, United States, 24127

9 Floor 1 - Porch



Max Dimensions: 55'1" x 15'4"
Calculated Area: 619 sq. ft
Included: No

Heated: No
Finished: Yes
Enclosed: No
Contiguous: Yes
Permitted: Yes
Wet space: No
Addition: No
Conversion: No

10 Floor 1 - Bedroom



Max Dimensions: 10'11" x 13'5"
Calculated Area: 138 sq. ft
Included: Yes

Heated: Yes
Finished: Yes
Enclosed: Yes
Contiguous: Yes
Permitted: Yes
Wet space: No
Addition: No
Conversion: No

11 Floor 1 - Foyer



Max Dimensions: 3'11" x 13'9"
Calculated Area: 54 sq. ft
Included: Yes

Heated: Yes
Finished: Yes
Enclosed: Yes
Contiguous: Yes
Permitted: Yes
Wet space: No
Addition: No
Conversion: No

228 Artesian Lane, New Castle, Craig County, Virginia, United States, 24127

12 Floor 1 - Eat-in Kitchen



Max Dimensions: 12'5" x 17'3"
Calculated Area: 211 sq. ft
Included: Yes

Heated: Yes
Finished: Yes
Enclosed: Yes
Contiguous: Yes
Permitted: Yes
Wet space: No
Addition: No
Conversion: No

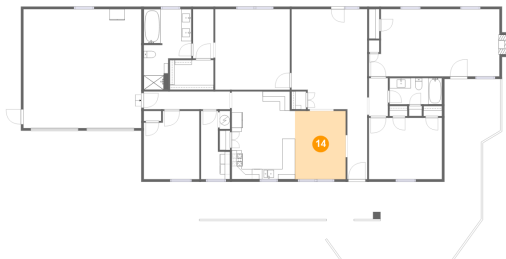
13 Floor 1 - Garage



Max Dimensions: 23'2" x 23'5"
Calculated Area: 542 sq. ft
Included: No

Heated: No
Finished: No
Enclosed: Yes
Contiguous: Yes
Permitted: Yes
Wet space: No
Addition: No
Conversion: No

14 Floor 1 - Dining Area



Max Dimensions: 10'0" x 13'5"
Calculated Area: 134 sq. ft
Included: Yes

Heated: Yes
Finished: Yes
Enclosed: Yes
Contiguous: Yes
Permitted: Yes
Wet space: No
Addition: No
Conversion: No

228 Artesian Lane, New Castle, Craig County, Virginia, United States, 24127

15 Floor 1 - Hall



Max Dimensions: 3'9" x 7'6"
Calculated Area: 28 sq. ft
Included: Yes

Heated: Yes
Finished: Yes
Enclosed: Yes
Contiguous: Yes
Permitted: Yes
Wet space: No
Addition: No
Conversion: No

16 Floor 1 - Deck



Max Dimensions: 11'0" x 20'3"
Calculated Area: 188 sq. ft
Included: No

Heated: No
Finished: Yes
Enclosed: No
Contiguous: Yes
Permitted: Yes
Wet space: No
Addition: No
Conversion: No

17 Floor 1 - Bedroom



Max Dimensions: 14'4" x 12'1"
Calculated Area: 173 sq. ft
Included: Yes

Heated: Yes
Finished: Yes
Enclosed: Yes
Contiguous: Yes
Permitted: Yes
Wet space: No
Addition: No
Conversion: No

228 Artesian Lane, New Castle, Craig County, Virginia, United States, 24127

18 Floor 1 - Primary Bath



Max Dimensions: 9'4" x 15'10"
Calculated Area: 119 sq. ft
Included: Yes

Heated: Yes
Finished: Yes
Enclosed: Yes
Contiguous: Yes
Permitted: Yes
Wet space: Yes
Addition: No
Conversion: No