


Home report

1725 67th Ave,Greeley,CO,United States




Property summary




0

Garages




3

Bedrooms



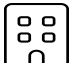
2

Bathrooms




1

Half baths




3

Floors



1,687

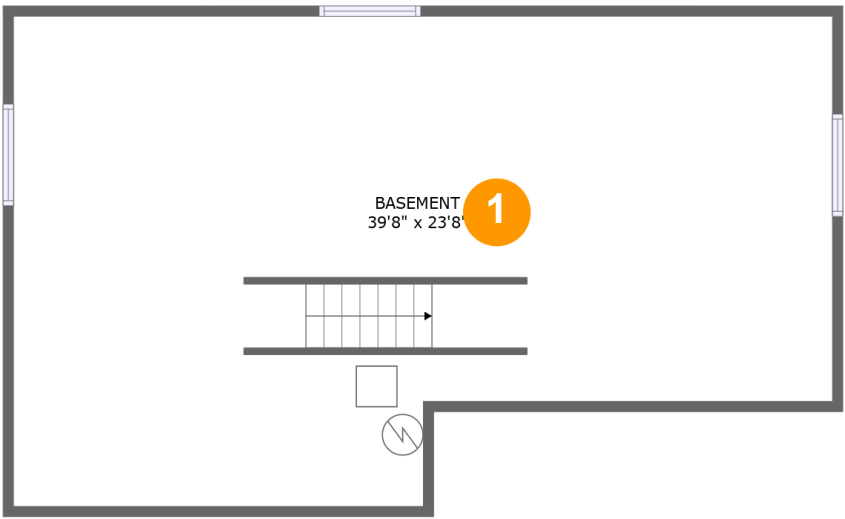
Gross living area sqft



3,415

Total sqft

1725 67th Ave,Greeley,CO,United States

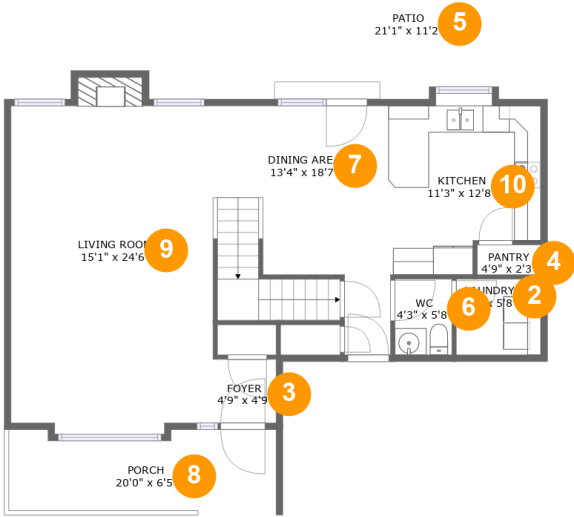


Room dimensions

Floor 1 Total sqft: 904 Living area: 0

#		Dimensions	sqft	Counted as living area
1	Basement	39'8" x 23'8"	840 sq. ft	No

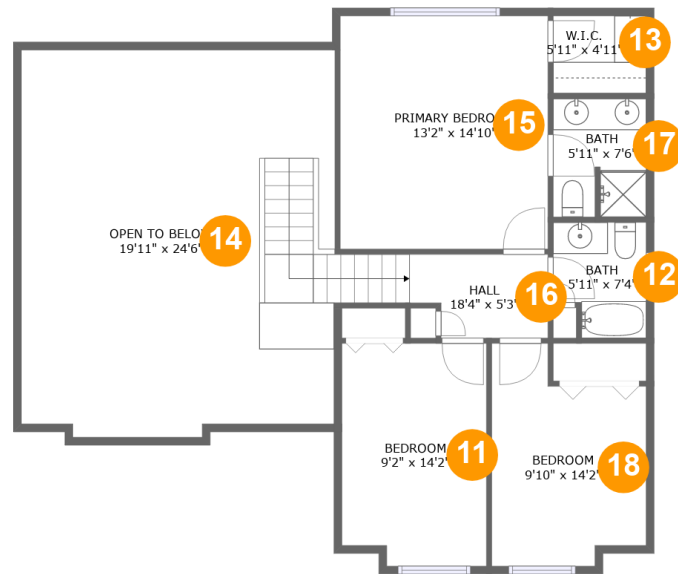
1725 67th Ave,Greeley,CO,United States



Room dimensions

Floor 2 Total sqft: 1279 Living area: 915

#		Dimensions	sqft	Counted as living area
2	Laundry	6'4" x 5'8"	36 sq. ft	Yes
3	Foyer	4'9" x 4'9"	22 sq. ft	Yes
4	Pantry	4'9" x 2'3"	11 sq. ft	Yes
5	Patio	21'1" x 11'2"	237 sq. ft	No
6	WC	4'3" x 5'8"	24 sq. ft	Yes
7	Dining Area	13'4" x 18'7"	216 sq. ft	Yes
8	Porch	20'0" x 6'5"	115 sq. ft	No
9	Living Room	15'1" x 24'6"	376 sq. ft	Yes
10	Kitchen	11'3" x 12'8"	129 sq. ft	Yes

1725 67th Ave, Greeley, CO, United States

Room dimensions

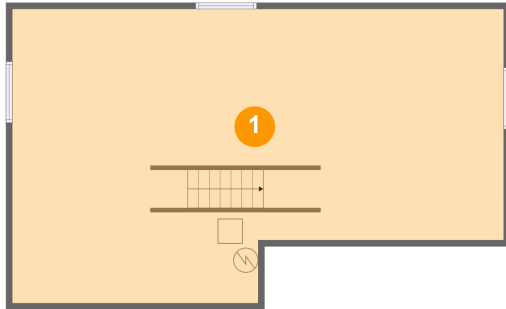
Floor 3

Total sqft: 1232 Living area: 772

#		Dimensions	sqft	Counted as living area
11	Bedroom	9'2" x 14'2"	126 sq. ft	Yes
12	Bath	5'11" x 7'4"	39 sq. ft	Yes
13	W.I.C.	5'11" x 4'11"	29 sq. ft	Yes
14	Open To Below	19'11" x 24'6"	427 sq. ft	No
15	Primary Bedroom	13'2" x 14'10"	195 sq. ft	Yes
16	Hall	18'4" x 5'3"	109 sq. ft	Yes
17	Bath	5'11" x 7'6"	43 sq. ft	Yes
18	Bedroom	9'10" x 14'2"	117 sq. ft	Yes

1725 67th Ave,Greeley,CO,United States

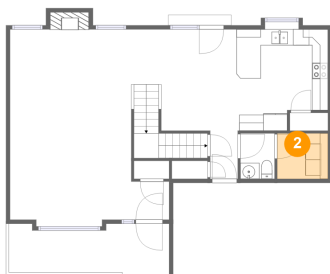
1 Floor 1 - Basement



Dimensions: 39'8" x 23'8"
Area: 840 sq. ft
Counted as living area: No

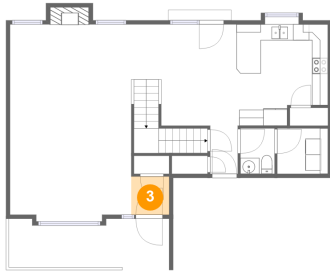
Heated: Yes
Finished: No
Enclosed: Yes
Contiguous: Yes
Permitted: Yes
Wet space: No
Addition: No
Conversion: No

2 Floor 2 - Laundry



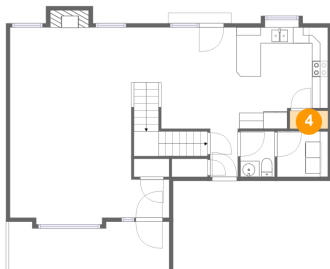
Dimensions: 6'4" x 5'8"
Area: 36 sq. ft
Counted as living area: Yes

Heated: Yes
Finished: Yes
Enclosed: Yes
Contiguous: Yes
Permitted: Yes
Wet space: No
Addition: No
Conversion: No

1725 67th Ave, Greeley, CO, United States**3 Floor 2 - Foyer**

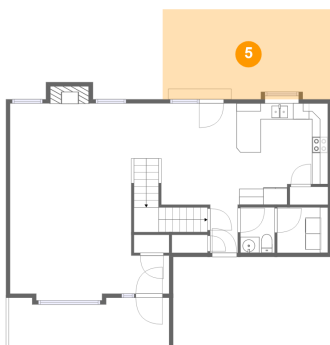
Dimensions: 4'9" x 4'9"
Area: 22 sq. ft
Counted as living area: Yes

Heated: Yes
Finished: Yes
Enclosed: Yes
Contiguous: Yes
Permitted: Yes
Wet space: No
Addition: No
Conversion: No

4 Floor 2 - Pantry

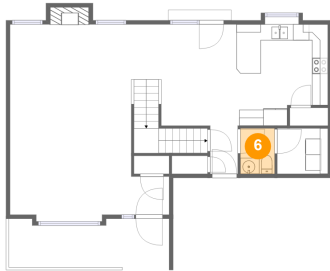
Dimensions: 4'9" x 2'3"
Area: 11 sq. ft
Counted as living area: Yes

Heated: Yes
Finished: Yes
Enclosed: Yes
Contiguous: Yes
Permitted: Yes
Wet space: No
Addition: No
Conversion: No

5 Floor 2 - Patio

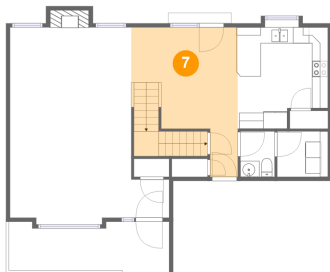
Dimensions: 21'1" x 11'2"
Area: 237 sq. ft
Counted as living area: No

Heated: No
Finished: Yes
Enclosed: No
Contiguous: Yes
Permitted: Yes
Wet space: No
Addition: No
Conversion: No

1725 67th Ave, Greeley, CO, United States**6 Floor 2 - WC**

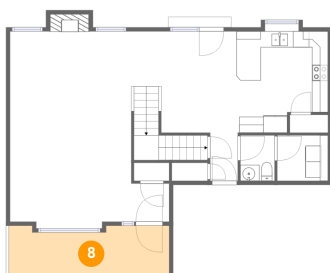
Dimensions: 4'3" x 5'8"
Area: 24 sq. ft
Counted as living area: Yes

Heated: Yes
Finished: Yes
Enclosed: Yes
Contiguous: Yes
Permitted: Yes
Wet space: Yes
Addition: No
Conversion: No

7 Floor 2 - Dining Area

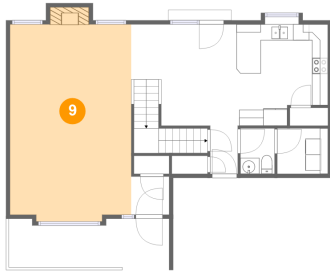
Dimensions: 13'4" x 18'7"
Area: 216 sq. ft
Counted as living area: Yes

Heated: Yes
Finished: Yes
Enclosed: Yes
Contiguous: Yes
Permitted: Yes
Wet space: No
Addition: No
Conversion: No

8 Floor 2 - Porch

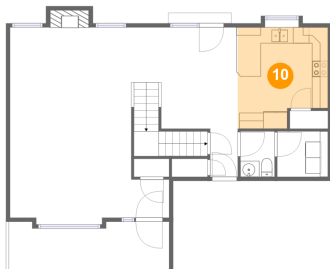
Dimensions: 20'0" x 6'5"
Area: 115 sq. ft
Counted as living area: No

Heated: No
Finished: Yes
Enclosed: No
Contiguous: Yes
Permitted: Yes
Wet space: No
Addition: No
Conversion: No

1725 67th Ave, Greeley, CO, United States**9 Floor 2 - Living Room**

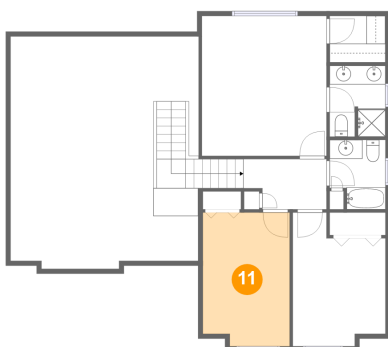
Dimensions: 15'1" x 24'6"
Area: 376 sq. ft
Counted as living area: Yes

Heated: Yes
Finished: Yes
Enclosed: Yes
Contiguous: Yes
Permitted: Yes
Wet space: No
Addition: No
Conversion: No

10 Floor 2 - Kitchen

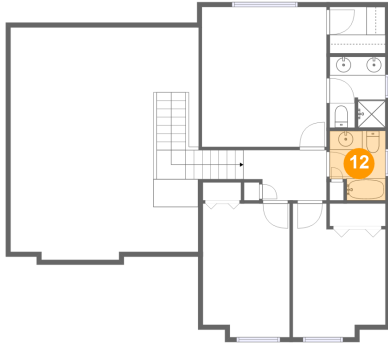
Dimensions: 11'3" x 12'8"
Area: 129 sq. ft
Counted as living area: Yes

Heated: Yes
Finished: Yes
Enclosed: Yes
Contiguous: Yes
Permitted: Yes
Wet space: No
Addition: No
Conversion: No

11 Floor 3 - Bedroom

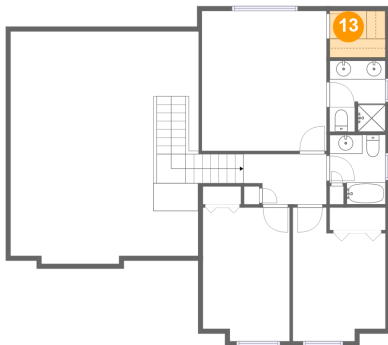
Dimensions: 9'2" x 14'2"
Area: 126 sq. ft
Counted as living area: Yes

Heated: Yes
Finished: Yes
Enclosed: Yes
Contiguous: Yes
Permitted: Yes
Wet space: No
Addition: No
Conversion: No

1725 67th Ave, Greeley, CO, United States**12 Floor 3 - Bath**

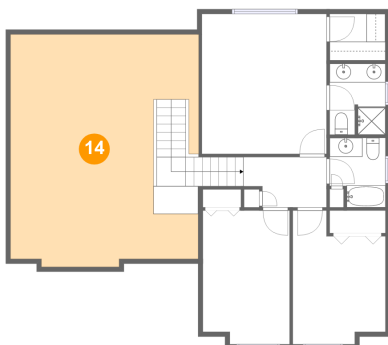
Dimensions: 5'11" x 7'4"
Area: 39 sq. ft
Counted as living area: Yes

Heated: Yes
Finished: Yes
Enclosed: Yes
Contiguous: Yes
Permitted: Yes
Wet space: Yes
Addition: No
Conversion: No

13 Floor 3 - W.I.C.

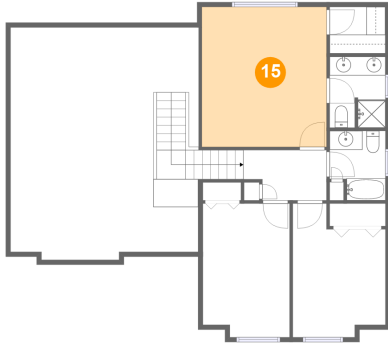
Dimensions: 5'11" x 4'11"
Area: 29 sq. ft
Counted as living area: Yes

Heated: Yes
Finished: Yes
Enclosed: Yes
Contiguous: Yes
Permitted: Yes
Wet space: No
Addition: No
Conversion: No

14 Floor 3 - Open To Below

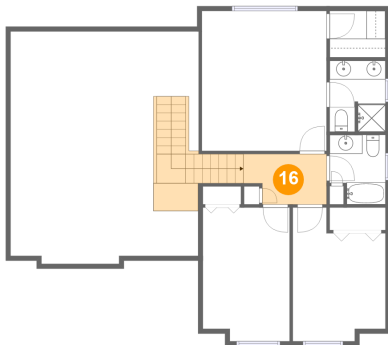
Dimensions: 19'11" x 24'6"
Area: 427 sq. ft
Counted as living area: No

Heated: No
Finished: No
Enclosed: No
Contiguous: Yes
Permitted: No
Wet space: No
Addition: No
Conversion: No

1725 67th Ave, Greeley, CO, United States**15 Floor 3 - Primary Bedroom**

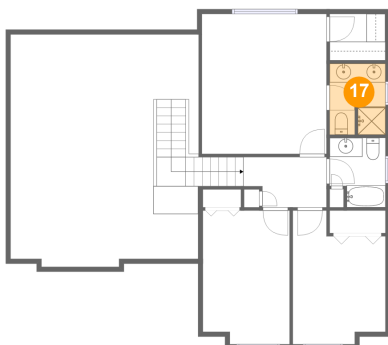
Dimensions: 13'2" x 14'10"
Area: 195 sq. ft
Counted as living area: Yes

Heated: Yes
Finished: Yes
Enclosed: Yes
Contiguous: Yes
Permitted: Yes
Wet space: No
Addition: No
Conversion: No

16 Floor 3 - Hall

Dimensions: 18'4" x 5'3"
Area: 109 sq. ft
Counted as living area: Yes

Heated: Yes
Finished: Yes
Enclosed: Yes
Contiguous: Yes
Permitted: Yes
Wet space: No
Addition: No
Conversion: No

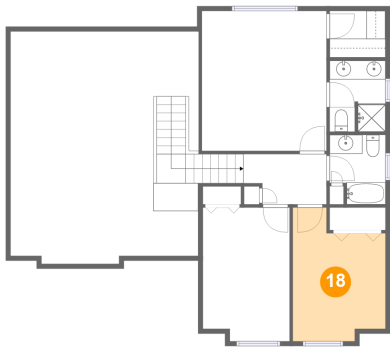
17 Floor 3 - Bath

Dimensions: 5'11" x 7'6"
Area: 43 sq. ft
Counted as living area: Yes

Heated: Yes
Finished: Yes
Enclosed: Yes
Contiguous: Yes
Permitted: Yes
Wet space: Yes
Addition: No
Conversion: No

1725 67th Ave,Greeley,CO,United States

18 Floor 3 - Bedroom



Dimensions: 9'10" x 14'2"
Area: 117 sq. ft
Counted as living area: Yes

Heated: Yes
Finished: Yes
Enclosed: Yes
Contiguous: Yes
Permitted: Yes
Wet space: No
Addition: No
Conversion: No