


# 957 Lund Lane, Batavia, Kane County, Illinois, United States, 60510



## Property summary

 **1** Garages

 **5** Bedrooms

 **2** Bathrooms

 **1** Half baths

 **3** Floors

 **3,501** Gross living area sqft

 **4,938** Total sqft

957 Lund Lane, Batavia, Kane County, Illinois, United States, 60510



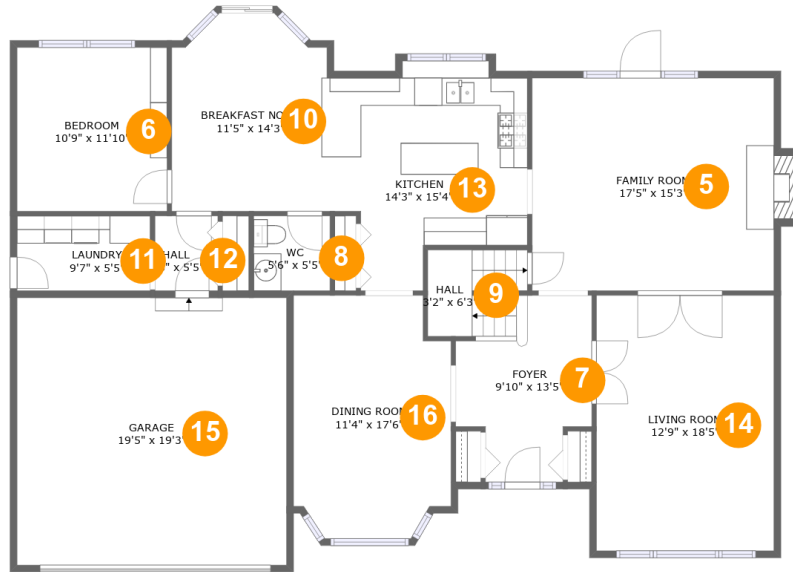
## Room dimensions

Floor 1

Total sqft: 1538 Living area: 635

#		Dimensions	sqft	Counted as living area
1	Basement	19'1" x 18'5"	306 sq. ft	Yes
2	Utility	31'10" x 15'3"	455 sq. ft	No
3	Basement	12'9" x 18'5"	235 sq. ft	Yes
4	Crawl Space	22'4" x 17'5"	391 sq. ft	No

# 957 Lund Lane, Batavia, Kane County, Illinois, United States, 60510



## Room dimensions

Floor 2

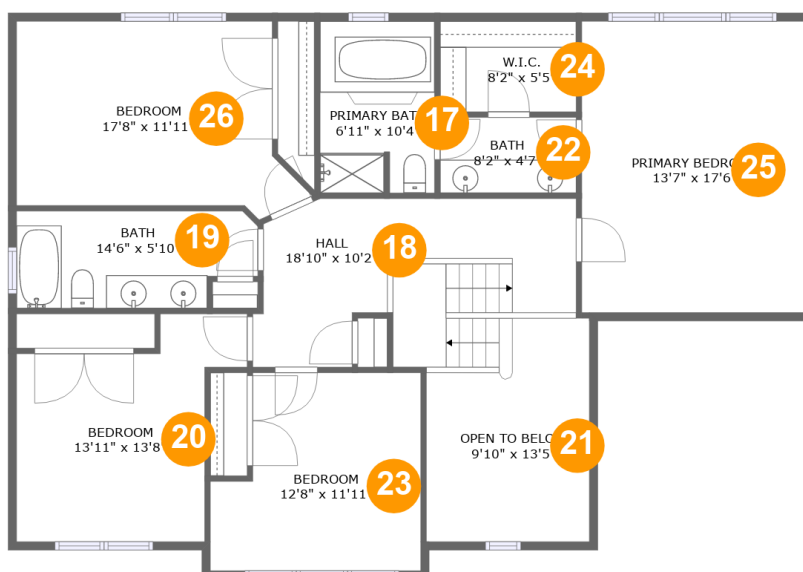
Total sqft: 1988 Living area: 1583

#		Dimensions	sqft	Counted as living area
5	Family Room	17'5" x 15'3"	274 sq. ft	Yes
6	Bedroom	10'9" x 11'10"	128 sq. ft	Yes
7	Foyer	9'10" x 13'5"	111 sq. ft	Yes
8	WC	5'6" x 5'5"	30 sq. ft	Yes
9	Hall	3'2" x 6'3"	32 sq. ft	Yes
10	Breakfast Nook	11'5" x 14'3"	150 sq. ft	Yes
11	Laundry	9'7" x 5'5"	52 sq. ft	Yes
12	Hall	4'6" x 5'5"	24 sq. ft	Yes
13	Kitchen	14'3" x 15'4"	188 sq. ft	Yes
14	Living Room	12'9" x 18'5"	235 sq. ft	Yes
15	Garage	19'5" x 19'3"	374 sq. ft	No

# 957 Lund Lane, Batavia, Kane County, Illinois, United States, 60510

#		Dimensions	sqft	Counted as living area
16	Dining Room	11'4" x 17'6"	183 sq. ft	Yes

# 957 Lund Lane, Batavia, Kane County, Illinois, United States, 60510



## Room dimensions

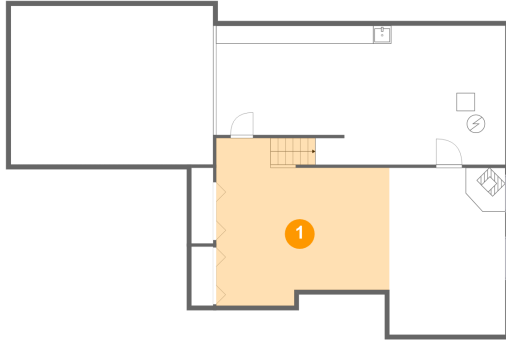
Floor 3

Total sqft: 1412 Living area: 1283

#		Dimensions	sqft	Counted as living area
17	Primary Bath	6'11" x 10'4"	70 sq. ft	Yes
18	Hall	18'10" x 10'2"	170 sq. ft	Yes
19	Bath	14'6" x 5'10"	79 sq. ft	Yes
20	Bedroom	13'11" x 13'8"	143 sq. ft	Yes
21	Open To Below	9'10" x 13'5"	118 sq. ft	No
22	Bath	8'2" x 4'7"	37 sq. ft	Yes
23	Bedroom	12'8" x 11'11"	134 sq. ft	Yes
24	W.I.C.	8'2" x 5'5"	45 sq. ft	Yes
25	Primary Bedroom	13'7" x 17'6"	238 sq. ft	Yes
26	Bedroom	17'8" x 11'11"	176 sq. ft	Yes

# 957 Lund Lane, Batavia, Kane County, Illinois, United States, 60510

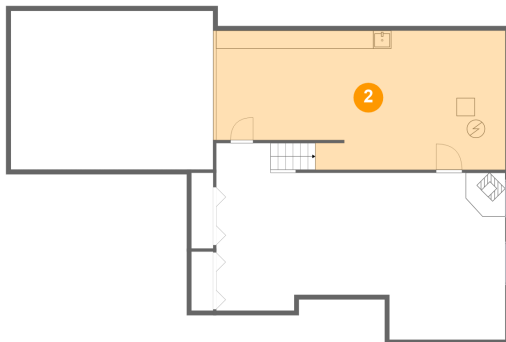
## 1 Floor 1 - Basement



**Dimensions:** 19'1" x 18'5"  
**Area:** 306 sq. ft  
**Counted as living area:** Yes

**Heated:** Yes  
**Finished:** Yes  
**Enclosed:** Yes  
**Contiguous:** Yes  
**Permitted:** Yes  
**Wet space:** No  
**Addition:** No  
**Conversion:** No

## 2 Floor 1 - Utility

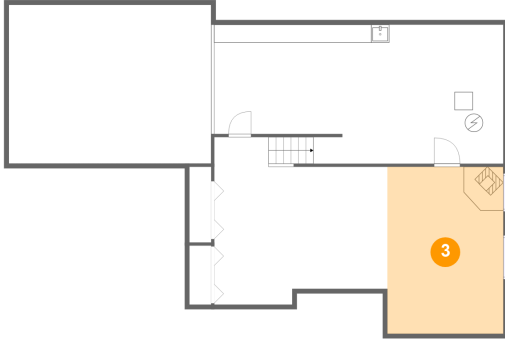


**Dimensions:** 31'10" x 15'3"  
**Area:** 455 sq. ft  
**Counted as living area:** No

**Heated:** No  
**Finished:** No  
**Enclosed:** Yes  
**Contiguous:** Yes  
**Permitted:** Yes  
**Wet space:** No  
**Addition:** No  
**Conversion:** No

# 957 Lund Lane, Batavia, Kane County, Illinois, United States, 60510

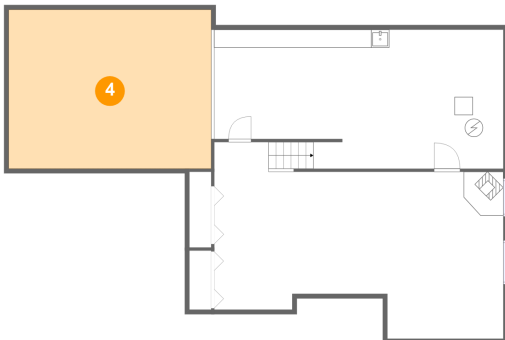
## 3 Floor 1 - Basement



Dimensions: 12'9" x 18'5"  
Area: 235 sq. ft  
Counted as living area: Yes

Heated: Yes  
Finished: Yes  
Enclosed: Yes  
Contiguous: Yes  
Permitted: Yes  
Wet space: No  
Addition: No  
Conversion: No

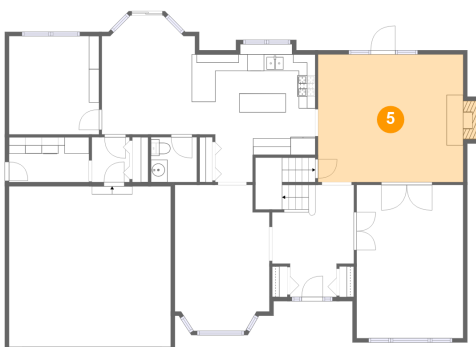
## 4 Floor 1 - Crawl Space



Dimensions: 22'4" x 17'5"  
Area: 391 sq. ft  
Counted as living area: No

Heated: No  
Finished: No  
Enclosed: No  
Contiguous: Yes  
Permitted: No  
Wet space: No  
Addition: No  
Conversion: No

## 5 Floor 2 - Family Room

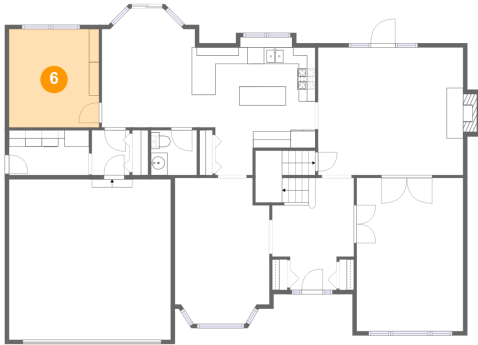


Dimensions: 17'5" x 15'3"  
Area: 274 sq. ft  
Counted as living area: Yes

Heated: Yes  
Finished: Yes  
Enclosed: Yes  
Contiguous: Yes  
Permitted: Yes  
Wet space: No  
Addition: No  
Conversion: No

# 957 Lund Lane, Batavia, Kane County, Illinois, United States, 60510

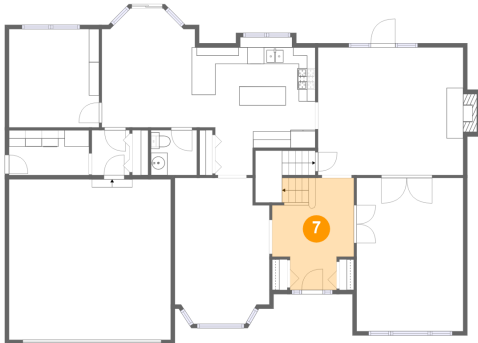
## 6 Floor 2 - Bedroom



Dimensions: 10'9" x 11'10"  
Area: 128 sq. ft  
Counted as living area: Yes

Heated: Yes  
Finished: Yes  
Enclosed: Yes  
Contiguous: Yes  
Permitted: Yes  
Wet space: No  
Addition: No  
Conversion: No

## 7 Floor 2 - Foyer



Dimensions: 9'10" x 13'5"  
Area: 111 sq. ft  
Counted as living area: Yes

Heated: Yes  
Finished: Yes  
Enclosed: Yes  
Contiguous: Yes  
Permitted: Yes  
Wet space: No  
Addition: No  
Conversion: No

## 8 Floor 2 - WC



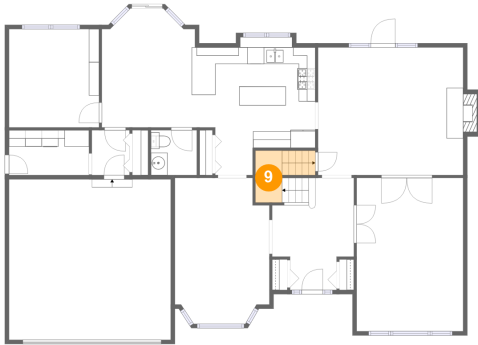
Dimensions: 5'6" x 5'5"  
Area: 30 sq. ft  
Counted as living area: Yes

Heated: Yes  
Finished: Yes  
Enclosed: Yes  
Contiguous: Yes  
Permitted: Yes  
Wet space: Yes  
Addition: No  
Conversion: No



# 957 Lund Lane, Batavia, Kane County, Illinois, United States, 60510

## 9 Floor 2 - Hall



Dimensions: 3'2" x 6'3"  
Area: 32 sq. ft  
Counted as living area: Yes

Heated: Yes  
Finished: Yes  
Enclosed: Yes  
Contiguous: Yes  
Permitted: Yes  
Wet space: No  
Addition: No  
Conversion: No

## 10 Floor 2 - Breakfast Nook



Dimensions: 11'5" x 14'3"  
Area: 150 sq. ft  
Counted as living area: Yes

Heated: Yes  
Finished: Yes  
Enclosed: Yes  
Contiguous: Yes  
Permitted: Yes  
Wet space: No  
Addition: No  
Conversion: No

## 11 Floor 2 - Laundry

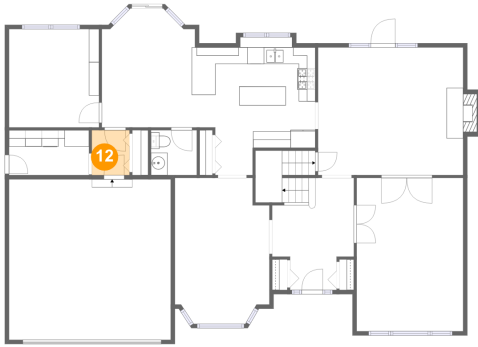


Dimensions: 9'7" x 5'5"  
Area: 52 sq. ft  
Counted as living area: Yes

Heated: Yes  
Finished: Yes  
Enclosed: Yes  
Contiguous: Yes  
Permitted: Yes  
Wet space: No  
Addition: No  
Conversion: No

# 957 Lund Lane, Batavia, Kane County, Illinois, United States, 60510

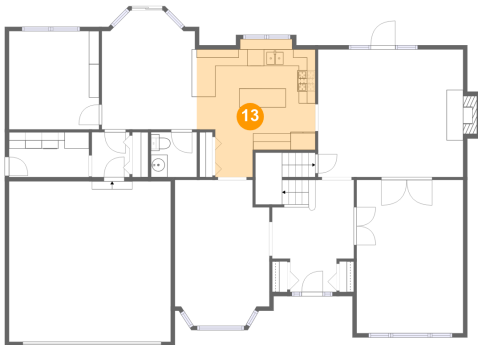
## 12 Floor 2 - Hall



Dimensions: 4'6" x 5'5"  
Area: 24 sq. ft  
Counted as living area: Yes

Heated: Yes  
Finished: Yes  
Enclosed: Yes  
Contiguous: Yes  
Permitted: Yes  
Wet space: No  
Addition: No  
Conversion: No

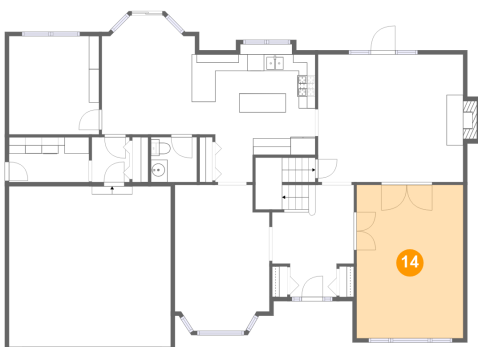
## 13 Floor 2 - Kitchen



Dimensions: 14'3" x 15'4"  
Area: 188 sq. ft  
Counted as living area: Yes

Heated: Yes  
Finished: Yes  
Enclosed: Yes  
Contiguous: Yes  
Permitted: Yes  
Wet space: No  
Addition: No  
Conversion: No

## 14 Floor 2 - Living Room

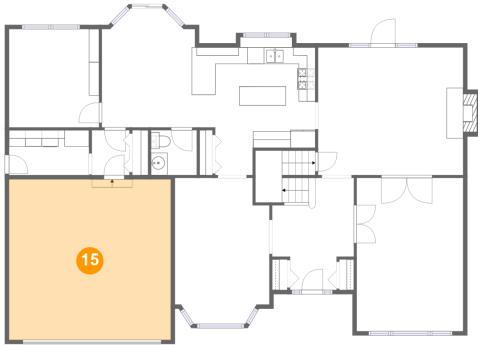


Dimensions: 12'9" x 18'5"  
Area: 235 sq. ft  
Counted as living area: Yes

Heated: Yes  
Finished: Yes  
Enclosed: Yes  
Contiguous: Yes  
Permitted: Yes  
Wet space: No  
Addition: No  
Conversion: No

957 Lund Lane, Batavia, Kane County, Illinois, United States, 60510

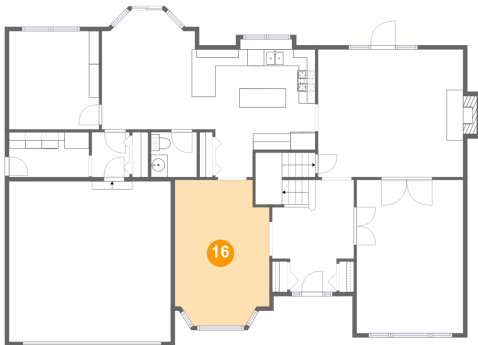
**15** Floor 2 - Garage



Dimensions: 19'5" x 19'3"  
Area: 374 sq. ft  
Counted as living area: No

Heated: No  
Finished: No  
Enclosed: Yes  
Contiguous: Yes  
Permitted: Yes  
Wet space: No  
Addition: No  
Conversion: No

**16** Floor 2 - Dining Room



Dimensions: 11'4" x 17'6"  
Area: 183 sq. ft  
Counted as living area: Yes

Heated: Yes  
Finished: Yes  
Enclosed: Yes  
Contiguous: Yes  
Permitted: Yes  
Wet space: No  
Addition: No  
Conversion: No

**17** Floor 3 - Primary Bath

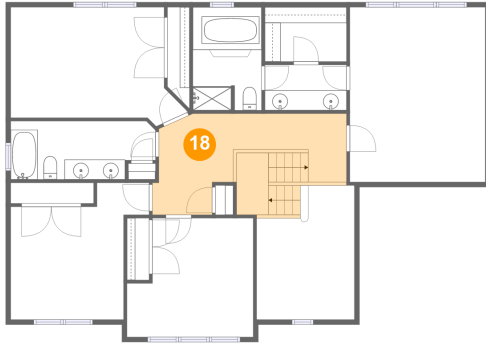


Dimensions: 6'11" x 10'4"  
Area: 70 sq. ft  
Counted as living area: Yes

Heated: Yes  
Finished: Yes  
Enclosed: Yes  
Contiguous: Yes  
Permitted: Yes  
Wet space: Yes  
Addition: No  
Conversion: No

# 957 Lund Lane, Batavia, Kane County, Illinois, United States, 60510

## 18 Floor 3 - Hall



Dimensions: 18'10" x 10'2"  
Area: 170 sq. ft  
Counted as living area: Yes

Heated: Yes  
Finished: Yes  
Enclosed: Yes  
Contiguous: Yes  
Permitted: Yes  
Wet space: No  
Addition: No  
Conversion: No

## 19 Floor 3 - Bath



Dimensions: 14'6" x 5'10"  
Area: 79 sq. ft  
Counted as living area: Yes

Heated: Yes  
Finished: Yes  
Enclosed: Yes  
Contiguous: Yes  
Permitted: Yes  
Wet space: Yes  
Addition: No  
Conversion: No

## 20 Floor 3 - Bedroom

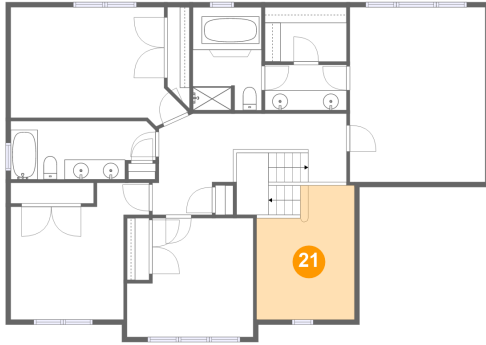


Dimensions: 13'11" x 13'8"  
Area: 143 sq. ft  
Counted as living area: Yes

Heated: Yes  
Finished: Yes  
Enclosed: Yes  
Contiguous: Yes  
Permitted: Yes  
Wet space: No  
Addition: No  
Conversion: No

# 957 Lund Lane, Batavia, Kane County, Illinois, United States, 60510

## 21 Floor 3 - Open To Below



Dimensions: 9'10" x 13'5"  
Area: 118 sq. ft  
Counted as living area: No

Heated: No  
Finished: No  
Enclosed: No  
Contiguous: Yes  
Permitted: No  
Wet space: No  
Addition: No  
Conversion: No

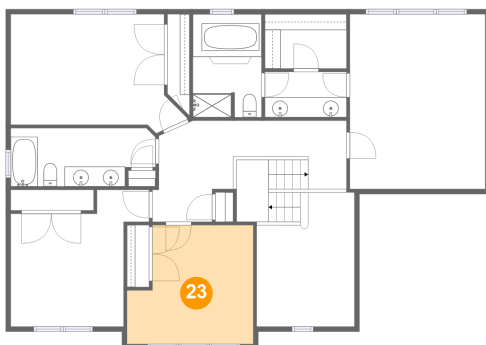
## 22 Floor 3 - Bath



Dimensions: 8'2" x 4'7"  
Area: 37 sq. ft  
Counted as living area: Yes

Heated: Yes  
Finished: Yes  
Enclosed: Yes  
Contiguous: Yes  
Permitted: Yes  
Wet space: Yes  
Addition: No  
Conversion: No

## 23 Floor 3 - Bedroom

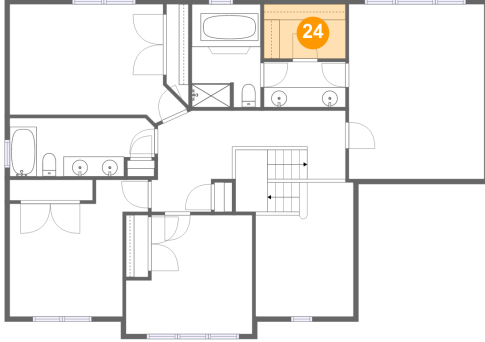


Dimensions: 12'8" x 11'11"  
Area: 134 sq. ft  
Counted as living area: Yes

Heated: Yes  
Finished: Yes  
Enclosed: Yes  
Contiguous: Yes  
Permitted: Yes  
Wet space: No  
Addition: No  
Conversion: No

# 957 Lund Lane, Batavia, Kane County, Illinois, United States, 60510

## 24 Floor 3 - W.I.C.



Dimensions: 8'2" x 5'5"  
Area: 45 sq. ft  
Counted as living area: Yes

Heated: Yes  
Finished: Yes  
Enclosed: Yes  
Contiguous: Yes  
Permitted: Yes  
Wet space: No  
Addition: No  
Conversion: No

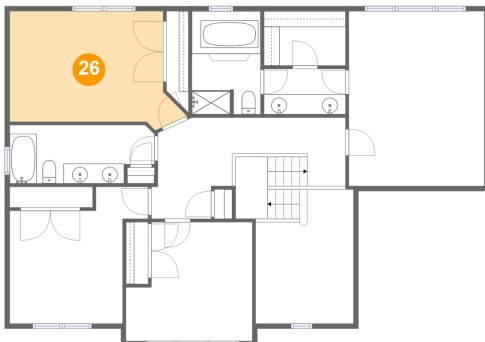
## 25 Floor 3 - Primary Bedroom



Dimensions: 13'7" x 17'6"  
Area: 238 sq. ft  
Counted as living area: Yes

Heated: Yes  
Finished: Yes  
Enclosed: Yes  
Contiguous: Yes  
Permitted: Yes  
Wet space: No  
Addition: No  
Conversion: No

## 26 Floor 3 - Bedroom



Dimensions: 17'8" x 11'11"  
Area: 176 sq. ft  
Counted as living area: Yes

Heated: Yes  
Finished: Yes  
Enclosed: Yes  
Contiguous: Yes  
Permitted: Yes  
Wet space: No  
Addition: No  
Conversion: No