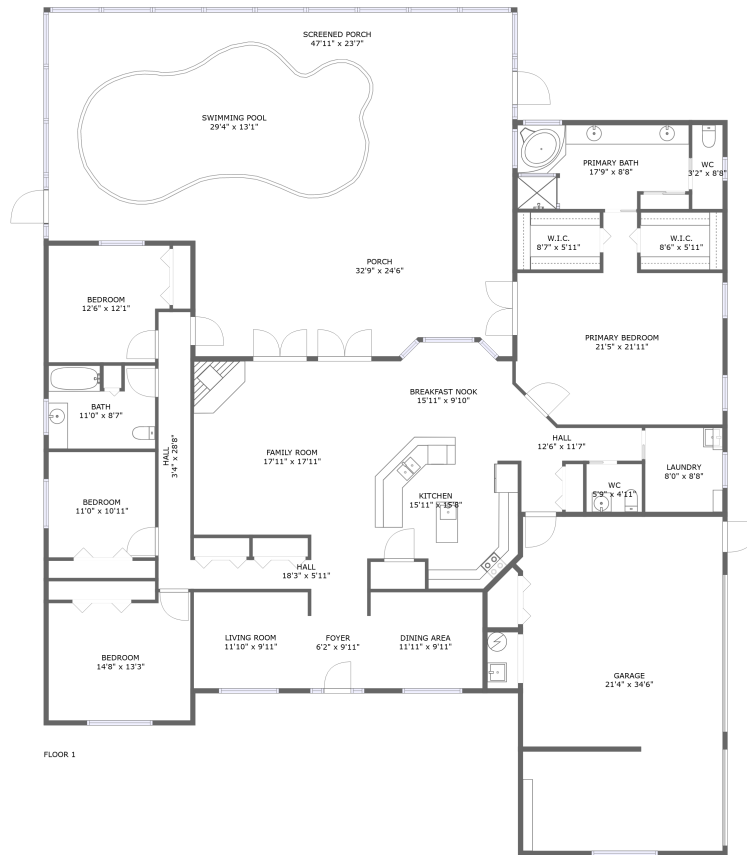



5000 Fawn Lake Blvd, Mims, FL, US



Property summary


 **1** Garages

 **4** Bedrooms

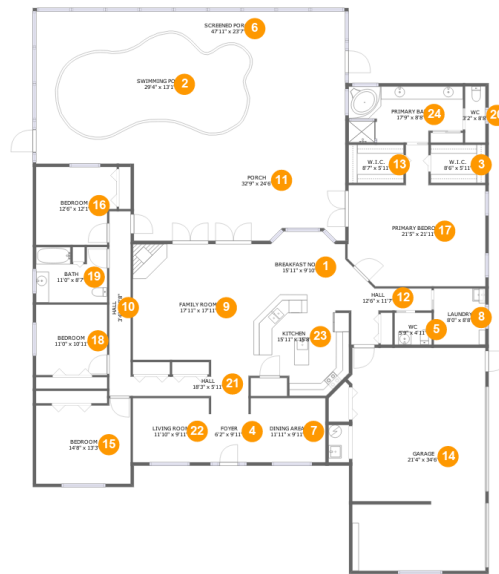
 **2** Bathrooms

 **1** Half baths

 **1** Floors

 **2,827**
Gross living
area sqft

 **4,817**
Total sqft

5000 Fawn Lake Blvd, Mims, FL, US**Room dimensions**

Floor 1

Total sqft: 4817 Living area: 2827

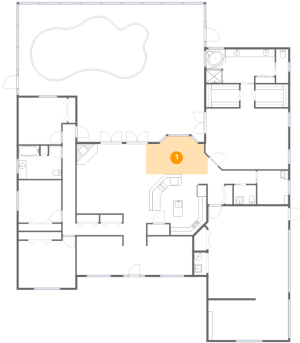
#		Dimensions	sqft	Counted as living area
1	Breakfast Nook	15'11" x 9'10"	138 sq. ft	Yes
2	Swimming Pool	29'4" x 13'1"	352 sq. ft	No
3	W.I.C.	8'6" x 5'11"	50 sq. ft	Yes
4	Foyer	6'2" x 9'11"	60 sq. ft	Yes
5	WC	5'9" x 4'11"	28 sq. ft	Yes
6	Screened Porch	47'11" x 23'7"	987 sq. ft	No
7	Dining Area	11'11" x 9'11"	118 sq. ft	Yes
8	Laundry	8'0" x 8'8"	70 sq. ft	Yes
9	Family Room	17'11" x 17'11"	322 sq. ft	Yes
10	Hall	3'4" x 28'8"	95 sq. ft	Yes
11	Porch	32'9" x 24'6"	520 sq. ft	No

5000 Fawn Lake Blvd,Mims,FL,US

#		Dimensions	sqft	Counted as living area
12	Hall	12'6" x 11'7"	71 sq. ft	Yes
13	W.I.C.	8'7" x 5'11"	51 sq. ft	Yes
14	Garage	21'4" x 34'6"	707 sq. ft	No
15	Bedroom	14'8" x 13'3"	182 sq. ft	Yes
16	Bedroom	12'6" x 12'1"	143 sq. ft	Yes
17	Primary Bedroom	21'5" x 21'11"	346 sq. ft	Yes
18	Bedroom	11'0" x 10'11"	120 sq. ft	Yes
19	Bath	11'0" x 8'7"	88 sq. ft	Yes
20	WC	3'2" x 8'8"	27 sq. ft	Yes
21	Hall	18'3" x 5'11"	72 sq. ft	Yes
22	Living Room	11'10" x 9'11"	117 sq. ft	Yes
23	Kitchen	15'11" x 15'8"	219 sq. ft	Yes
24	Primary Bath	17'9" x 8'8"	143 sq. ft	Yes

5000 Fawn Lake Blvd,Mims,FL,US

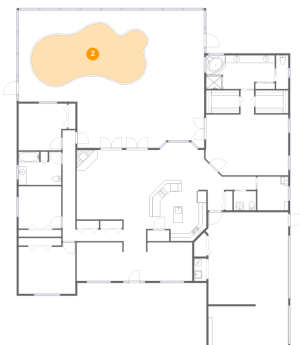
1 Floor 1 - Breakfast Nook



Dimensions: 15'11" x 9'10"
Area: 138 sq. ft
Counted as living area: Yes

Heated: Yes
Finished: Yes
Enclosed: Yes
Contiguous: Yes
Permitted: Yes
Wet space: No
Addition: No
Conversion: No

2 Floor 1 - Swimming Pool

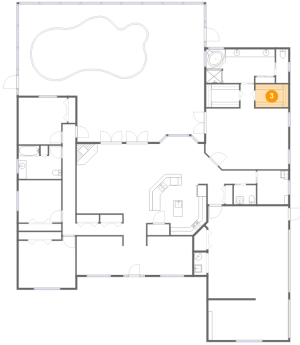


Dimensions: 29'4" x 13'1"
Area: 352 sq. ft
Counted as living area: No

Heated: No
Finished: No
Enclosed: No
Contiguous: Yes
Permitted: No
Wet space: No
Addition: No
Conversion: No

5000 Fawn Lake Blvd,Mims,FL,US

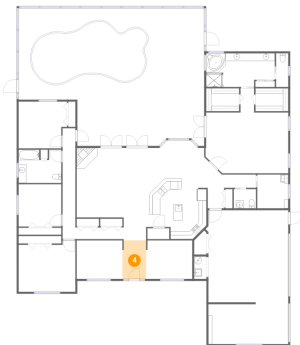
3 Floor 1 - W.I.C.



Dimensions: 8'6" x 5'11"
Area: 50 sq. ft
Counted as living area: Yes

Heated: Yes
Finished: Yes
Enclosed: Yes
Contiguous: Yes
Permitted: Yes
Wet space: No
Addition: No
Conversion: No

4 Floor 1 - Foyer



Dimensions: 6'2" x 9'11"
Area: 60 sq. ft
Counted as living area: Yes

Heated: Yes
Finished: Yes
Enclosed: Yes
Contiguous: Yes
Permitted: Yes
Wet space: No
Addition: No
Conversion: No

5 Floor 1 - WC

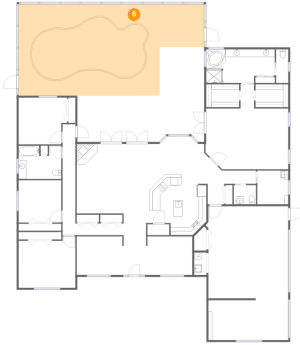


Dimensions: 5'9" x 4'11"
Area: 28 sq. ft
Counted as living area: Yes

Heated: Yes
Finished: Yes
Enclosed: Yes
Contiguous: Yes
Permitted: Yes
Wet space: Yes
Addition: No
Conversion: No

5000 Fawn Lake Blvd, Mims, FL, US

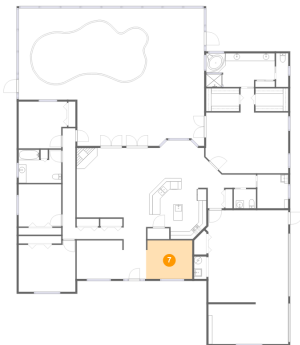
6 Floor 1 - Screened Porch



Dimensions: 47'11" x 23'7"
Area: 987 sq. ft
Counted as living area: No

Heated: No
Finished: Yes
Enclosed: No
Contiguous: Yes
Permitted: Yes
Wet space: No
Addition: No
Conversion: No

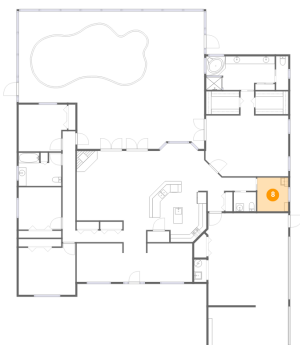
7 Floor 1 - Dining Area



Dimensions: 11'11" x 9'11"
Area: 118 sq. ft
Counted as living area: Yes

Heated: Yes
Finished: Yes
Enclosed: Yes
Contiguous: Yes
Permitted: Yes
Wet space: No
Addition: No
Conversion: No

8 Floor 1 - Laundry

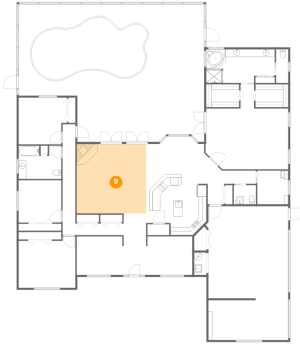


Dimensions: 8'0" x 8'8"
Area: 70 sq. ft
Counted as living area: Yes

Heated: Yes
Finished: Yes
Enclosed: Yes
Contiguous: Yes
Permitted: Yes
Wet space: No
Addition: No
Conversion: No

5000 Fawn Lake Blvd, Mims, FL, US

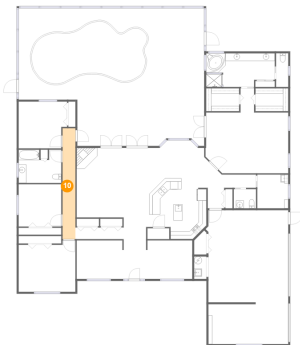
9 Floor 1 - Family Room



Dimensions: 17'11" x 17'11"
Area: 322 sq. ft
Counted as living area: Yes

Heated: Yes
Finished: Yes
Enclosed: Yes
Contiguous: Yes
Permitted: Yes
Wet space: No
Addition: No
Conversion: No

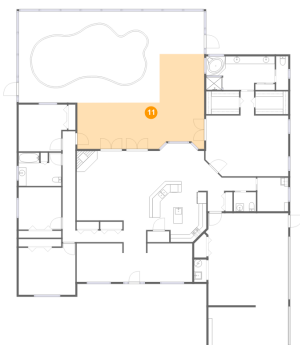
10 Floor 1 - Hall



Dimensions: 3'4" x 28'8"
Area: 95 sq. ft
Counted as living area: Yes

Heated: Yes
Finished: Yes
Enclosed: Yes
Contiguous: Yes
Permitted: Yes
Wet space: No
Addition: No
Conversion: No

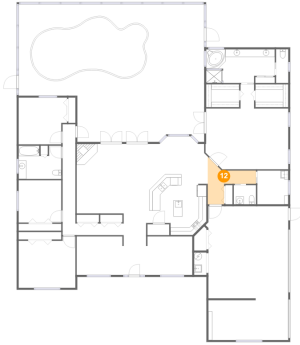
11 Floor 1 - Porch



Dimensions: 32'9" x 24'6"
Area: 520 sq. ft
Counted as living area: No

Heated: No
Finished: Yes
Enclosed: No
Contiguous: Yes
Permitted: Yes
Wet space: No
Addition: No
Conversion: No

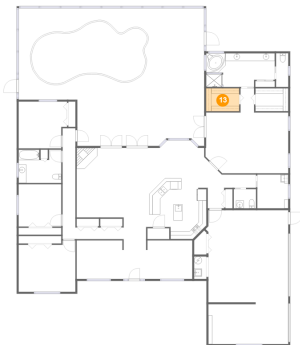
12 Floor 1 - Hall



Dimensions: 12'6" x 11'7"
Area: 71 sq. ft
Counted as living area: Yes

Heated: Yes
Finished: Yes
Enclosed: Yes
Contiguous: Yes
Permitted: Yes
Wet space: No
Addition: No
Conversion: No

13 Floor 1 - W.I.C.



Dimensions: 8'7" x 5'11"
Area: 51 sq. ft
Counted as living area: Yes

Heated: Yes
Finished: Yes
Enclosed: Yes
Contiguous: Yes
Permitted: Yes
Wet space: No
Addition: No
Conversion: No

14 Floor 1 - Garage

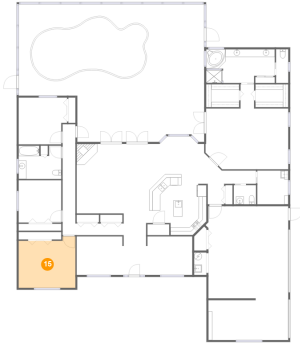


Dimensions: 21'4" x 34'6"
Area: 707 sq. ft
Counted as living area: No

Heated: No
Finished: No
Enclosed: Yes
Contiguous: Yes
Permitted: Yes
Wet space: No
Addition: No
Conversion: No

5000 Fawn Lake Blvd,Mims,FL,US

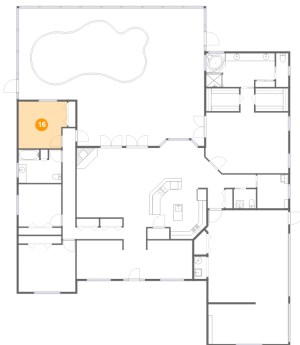
15 Floor 1 - Bedroom



Dimensions: 14'8" x 13'3"
Area: 182 sq. ft
Counted as living area: Yes

Heated: Yes
Finished: Yes
Enclosed: Yes
Contiguous: Yes
Permitted: Yes
Wet space: No
Addition: No
Conversion: No

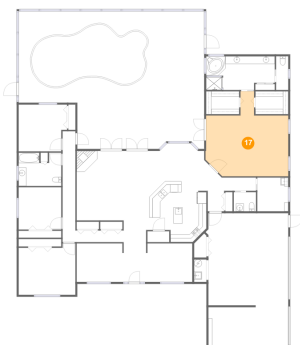
16 Floor 1 - Bedroom



Dimensions: 12'6" x 12'1"
Area: 143 sq. ft
Counted as living area: Yes

Heated: Yes
Finished: Yes
Enclosed: Yes
Contiguous: Yes
Permitted: Yes
Wet space: No
Addition: No
Conversion: No

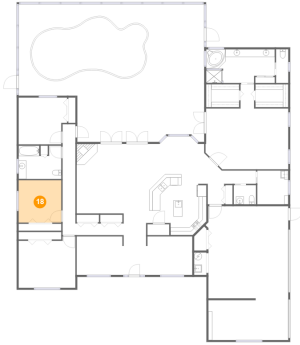
17 Floor 1 - Primary Bedroom



Dimensions: 21'5" x 21'11"
Area: 346 sq. ft
Counted as living area: Yes

Heated: Yes
Finished: Yes
Enclosed: Yes
Contiguous: Yes
Permitted: Yes
Wet space: No
Addition: No
Conversion: No

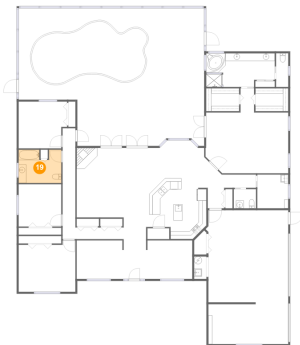
18 Floor 1 - Bedroom



Dimensions: 11'0" x 10'11"
Area: 120 sq. ft
Counted as living area: Yes

Heated: Yes
Finished: Yes
Enclosed: Yes
Contiguous: Yes
Permitted: Yes
Wet space: No
Addition: No
Conversion: No

19 Floor 1 - Bath



Dimensions: 11'0" x 8'7"
Area: 88 sq. ft
Counted as living area: Yes

Heated: Yes
Finished: Yes
Enclosed: Yes
Contiguous: Yes
Permitted: Yes
Wet space: Yes
Addition: No
Conversion: No

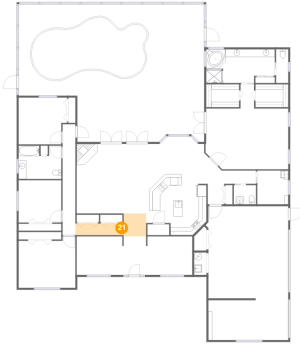
20 Floor 1 - WC



Dimensions: 3'2" x 8'8"
Area: 27 sq. ft
Counted as living area: Yes

Heated: Yes
Finished: Yes
Enclosed: Yes
Contiguous: Yes
Permitted: Yes
Wet space: Yes
Addition: No
Conversion: No

21 Floor 1 - Hall



Dimensions: 18'3" x 5'11"
Area: 72 sq. ft
Counted as living area: Yes

Heated: Yes
Finished: Yes
Enclosed: Yes
Contiguous: Yes
Permitted: Yes
Wet space: No
Addition: No
Conversion: No

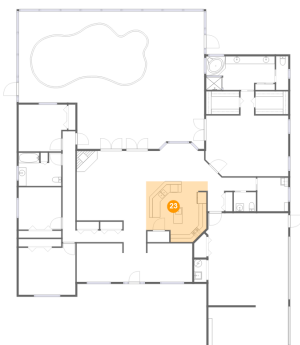
22 Floor 1 - Living Room



Dimensions: 11'10" x 9'11"
Area: 117 sq. ft
Counted as living area: Yes

Heated: Yes
Finished: Yes
Enclosed: Yes
Contiguous: Yes
Permitted: Yes
Wet space: No
Addition: No
Conversion: No

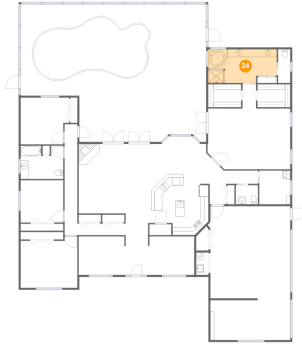
23 Floor 1 - Kitchen



Dimensions: 15'11" x 15'8"
Area: 219 sq. ft
Counted as living area: Yes

Heated: Yes
Finished: Yes
Enclosed: Yes
Contiguous: Yes
Permitted: Yes
Wet space: No
Addition: No
Conversion: No

24 Floor 1 - Primary Bath



Dimensions: 17'9" x 8'8"
Area: 143 sq. ft
Counted as living area: Yes

Heated: Yes
Finished: Yes
Enclosed: Yes
Contiguous: Yes
Permitted: Yes
Wet space: Yes
Addition: No
Conversion: No