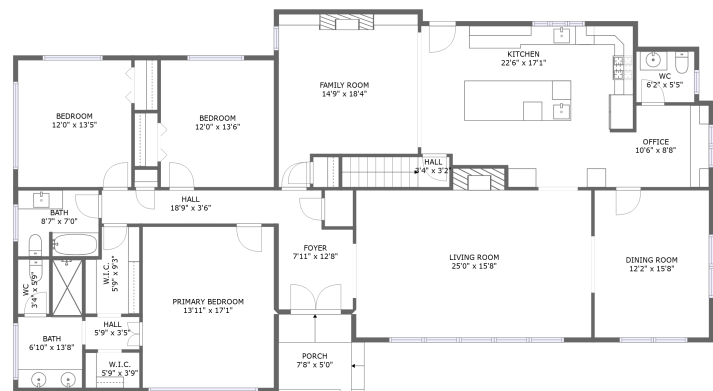
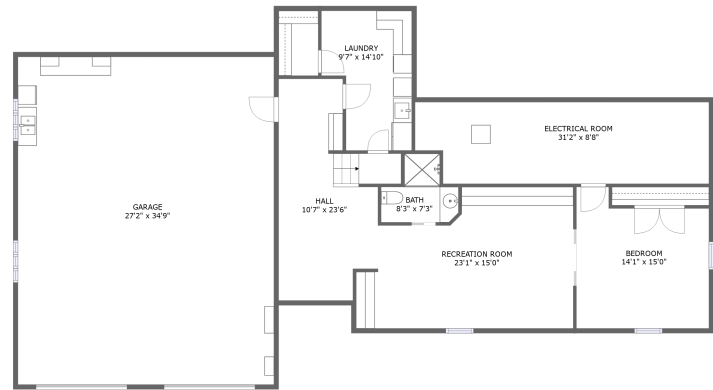


Home report

3421 Exeter Street Southwest, South Roanoke, Roanoke,  
Roanoke city, Virginia, United States, 24014





ENTRY LEVEL





LOWER LEVEL

Property summary


 **1** Garages


 **4** Bedrooms

 **3** Bathrooms

 **1** Half baths

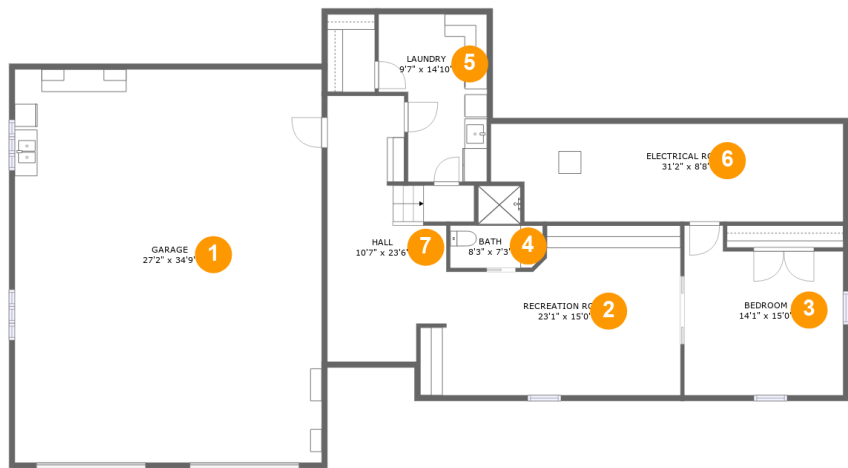
 **2** Floors

 **3,559** Gross living area sqft

 **4,896** Total sqft

Home report

3421 Exeter Street Southwest, South Roanoke, Roanoke,  
Roanoke city, Virginia, United States, 24014



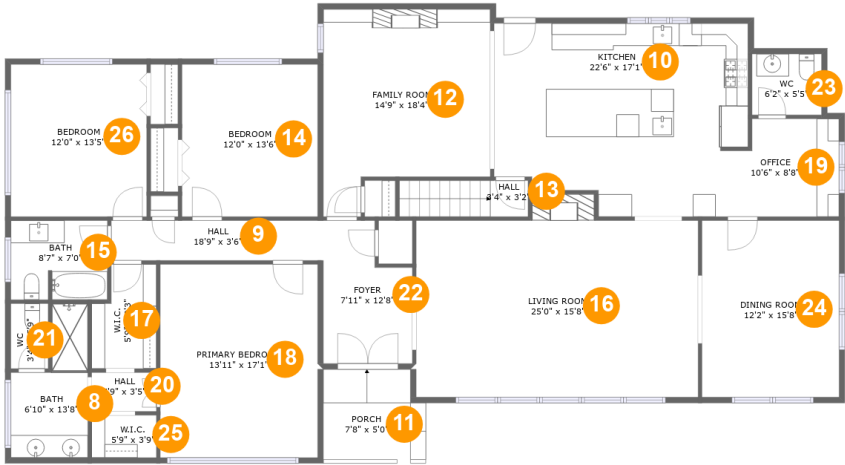
Room dimensions

Floor 1 Total sqft: 2285    Living area: 1010

#		Dimensions	sqft	Counted as living area
1	Garage	27'2" x 34'9"	945 sq. ft	No
2	Recreation Room	23'1" x 15'0"	290 sq. ft	Yes
3	Bedroom	14'1" x 15'0"	187 sq. ft	Yes
4	Bath	8'3" x 7'3"	44 sq. ft	Yes
5	Laundry	9'7" x 14'10"	122 sq. ft	Yes
6	Electrical Room	31'2" x 8'8"	260 sq. ft	No
7	Hall	10'7" x 23'6"	216 sq. ft	Yes

Home report

3421 Exeter Street Southwest, South Roanoke, Roanoke,  
Roanoke city, Virginia, United States, 24014



Room dimensions

Floor 2 Total sqft: 2611    Living area: 2549

#		Dimensions	sqft	Counted as living area
8	Bath	6'10" x 13'8"	71 sq. ft	Yes
9	Hall	18'9" x 3'6"	66 sq. ft	Yes
10	Kitchen	22'6" x 17'1"	344 sq. ft	Yes
11	Porch	7'8" x 5'0"	62 sq. ft	No
12	Family Room	14'9" x 18'4"	231 sq. ft	Yes
13	Hall	3'4" x 3'2"	36 sq. ft	Yes
14	Bedroom	12'0" x 13'6"	162 sq. ft	Yes
15	Bath	8'7" x 7'0"	59 sq. ft	Yes
16	Living Room	25'0" x 15'8"	403 sq. ft	Yes
17	W.I.C.	5'9" x 9'3"	47 sq. ft	Yes
18	Primary Bedroom	13'11" x 17'1"	239 sq. ft	Yes

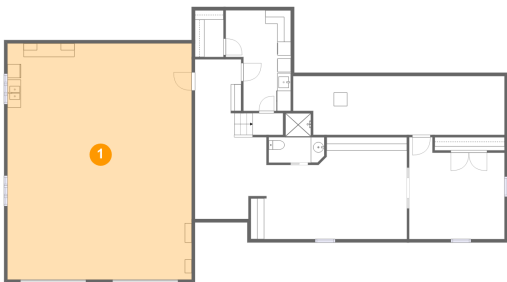
## Home report

**3421 Exeter Street Southwest, South Roanoke, Roanoke,  
Roanoke city, Virginia, United States, 24014**

#		Dimensions	sqft	Counted as living area
19	Office	10'6" x 8'8"	83 sq. ft	Yes
20	Hall	5'9" x 3'5"	20 sq. ft	Yes
21	WC	3'4" x 5'9"	19 sq. ft	Yes
22	Foyer	7'11" x 12'8"	86 sq. ft	Yes
23	WC	6'2" x 5'5"	33 sq. ft	Yes
24	Dining Room	12'2" x 15'8"	190 sq. ft	Yes
25	W.I.C.	5'9" x 3'9"	22 sq. ft	Yes
26	Bedroom	12'0" x 13'5"	162 sq. ft	Yes

3421 Exeter Street Southwest, South Roanoke, Roanoke,  
Roanoke city, Virginia, United States, 24014

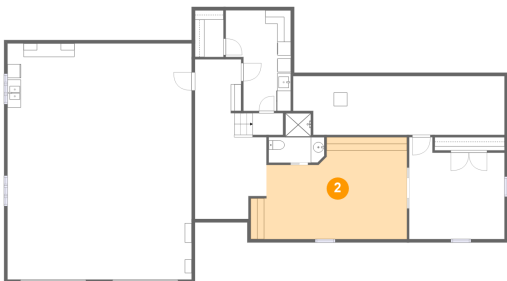
1 Floor 1 - Garage



Dimensions: 27'2" x 34'9"  
Area: 945 sq. ft  
Counted as living area: No

Heated: No  
Finished: No  
Enclosed: Yes  
Contiguous: Yes  
Permitted: Yes  
Wet space: No  
Addition: No  
Conversion: No

2 Floor 1 - Recreation Room



Dimensions: 23'1" x 15'0"  
Area: 290 sq. ft  
Counted as living area: Yes

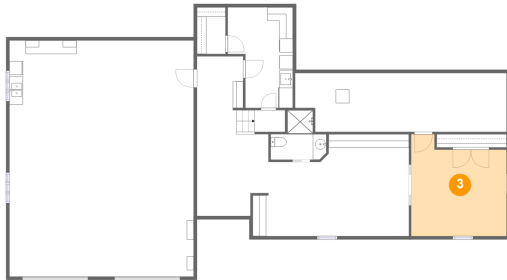
Heated: Yes  
Finished: Yes  
Enclosed: Yes  
Contiguous: Yes  
Permitted: Yes  
Wet space: No  
Addition: No  
Conversion: No

## Home report

3421 Exeter Street Southwest, South Roanoke, Roanoke,  
Roanoke city, Virginia, United States, 24014

### 3 Floor 1 - Bedroom

---

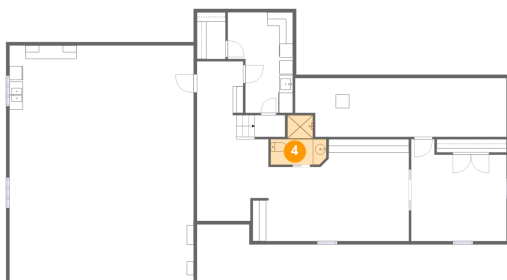


Dimensions: 14'1" x 15'0"  
Area: 187 sq. ft  
Counted as living area: Yes

Heated: Yes  
Finished: Yes  
Enclosed: Yes  
Contiguous: Yes  
Permitted: Yes  
Wet space: No  
Addition: No  
Conversion: No

### 4 Floor 1 - Bath

---

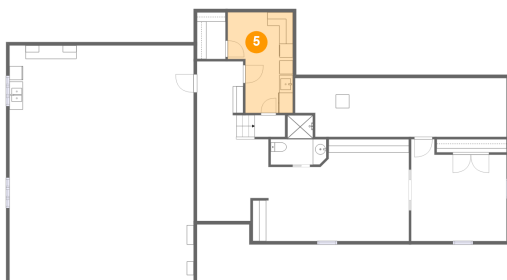


Dimensions: 8'3" x 7'3"  
Area: 44 sq. ft  
Counted as living area: Yes

Heated: Yes  
Finished: Yes  
Enclosed: Yes  
Contiguous: Yes  
Permitted: Yes  
Wet space: Yes  
Addition: No  
Conversion: No

### 5 Floor 1 - Laundry

---

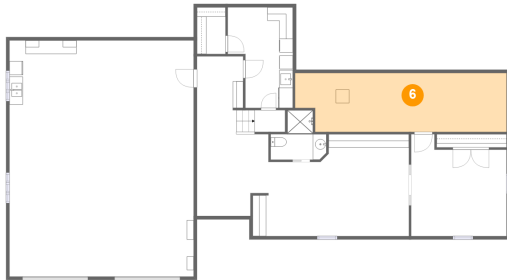


Dimensions: 9'7" x 14'10"  
Area: 122 sq. ft  
Counted as living area: Yes

Heated: Yes  
Finished: Yes  
Enclosed: Yes  
Contiguous: Yes  
Permitted: Yes  
Wet space: No  
Addition: No  
Conversion: No

3421 Exeter Street Southwest, South Roanoke, Roanoke,  
Roanoke city, Virginia, United States, 24014

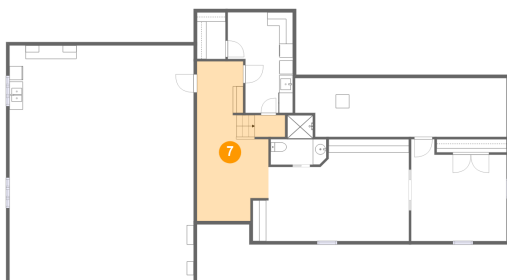
## 6 Floor 1 - Electrical Room



Dimensions: 31'2" x 8'8"  
Area: 260 sq. ft  
Counted as living area: No

Heated: No  
Finished: No  
Enclosed: Yes  
Contiguous: Yes  
Permitted: Yes  
Wet space: No  
Addition: No  
Conversion: No

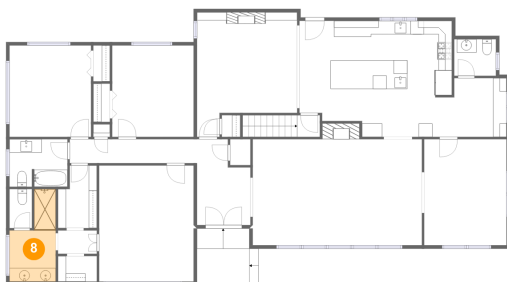
## 7 Floor 1 - Hall



Dimensions: 10'7" x 23'6"  
Area: 216 sq. ft  
Counted as living area: Yes

Heated: Yes  
Finished: Yes  
Enclosed: Yes  
Contiguous: Yes  
Permitted: Yes  
Wet space: No  
Addition: No  
Conversion: No

## 8 Floor 2 - Bath

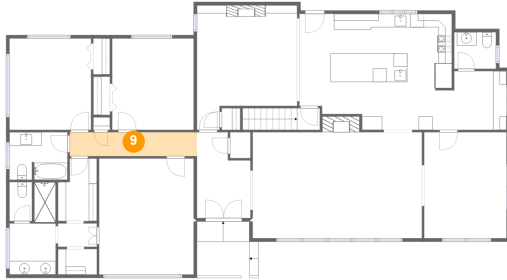


Dimensions: 6'10" x 13'8"  
Area: 71 sq. ft  
Counted as living area: Yes

Heated: Yes  
Finished: Yes  
Enclosed: Yes  
Contiguous: Yes  
Permitted: Yes  
Wet space: Yes  
Addition: No  
Conversion: No

3421 Exeter Street Southwest, South Roanoke, Roanoke,  
Roanoke city, Virginia, United States, 24014

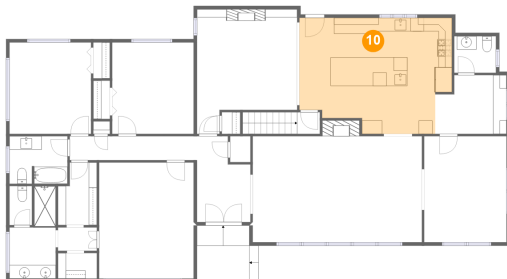
## 9 Floor 2 - Hall



Dimensions: 18'9" x 3'6"  
Area: 66 sq. ft  
Counted as living area: Yes

Heated: Yes  
Finished: Yes  
Enclosed: Yes  
Contiguous: Yes  
Permitted: Yes  
Wet space: No  
Addition: No  
Conversion: No

## 10 Floor 2 - Kitchen



Dimensions: 22'6" x 17'1"  
Area: 344 sq. ft  
Counted as living area: Yes

Heated: Yes  
Finished: Yes  
Enclosed: Yes  
Contiguous: Yes  
Permitted: Yes  
Wet space: No  
Addition: No  
Conversion: No

## 11 Floor 2 - Porch



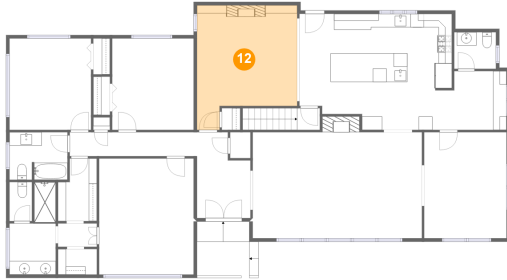
Dimensions: 7'8" x 5'0"  
Area: 62 sq. ft  
Counted as living area: No

Heated: No  
Finished: Yes  
Enclosed: No  
Contiguous: Yes  
Permitted: Yes  
Wet space: No  
Addition: No  
Conversion: No



3421 Exeter Street Southwest, South Roanoke, Roanoke,  
Roanoke city, Virginia, United States, 24014

## 12 Floor 2 - Family Room



Dimensions: 14'9" x 18'4"  
Area: 231 sq. ft  
Counted as living area: Yes

Heated: Yes  
Finished: Yes  
Enclosed: Yes  
Contiguous: Yes  
Permitted: Yes  
Wet space: No  
Addition: No  
Conversion: No

## 13 Floor 2 - Hall



Dimensions: 3'4" x 3'2"  
Area: 36 sq. ft  
Counted as living area: Yes

Heated: Yes  
Finished: Yes  
Enclosed: Yes  
Contiguous: Yes  
Permitted: Yes  
Wet space: No  
Addition: No  
Conversion: No

## 14 Floor 2 - Bedroom

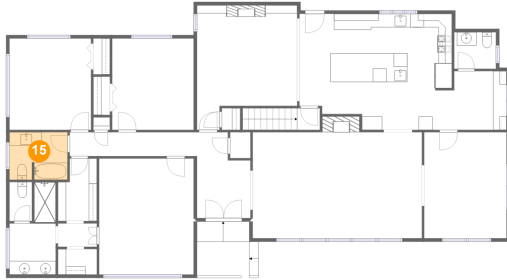


Dimensions: 12'0" x 13'6"  
Area: 162 sq. ft  
Counted as living area: Yes

Heated: Yes  
Finished: Yes  
Enclosed: Yes  
Contiguous: Yes  
Permitted: Yes  
Wet space: No  
Addition: No  
Conversion: No

3421 Exeter Street Southwest, South Roanoke, Roanoke,  
Roanoke city, Virginia, United States, 24014

## 15 Floor 2 - Bath



Dimensions: 8'7" x 7'0"  
Area: 59 sq. ft  
Counted as living area: Yes

Heated: Yes  
Finished: Yes  
Enclosed: Yes  
Contiguous: Yes  
Permitted: Yes  
Wet space: Yes  
Addition: No  
Conversion: No

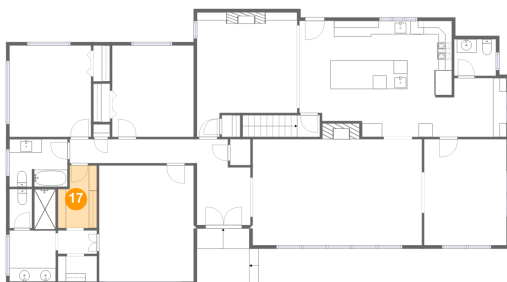
## 16 Floor 2 - Living Room



Dimensions: 25'0" x 15'8"  
Area: 403 sq. ft  
Counted as living area: Yes

Heated: Yes  
Finished: Yes  
Enclosed: Yes  
Contiguous: Yes  
Permitted: Yes  
Wet space: No  
Addition: No  
Conversion: No

## 17 Floor 2 - W.I.C.

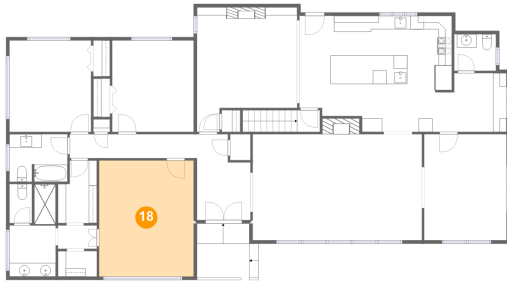


Dimensions: 5'9" x 9'3"  
Area: 47 sq. ft  
Counted as living area: Yes

Heated: Yes  
Finished: Yes  
Enclosed: Yes  
Contiguous: Yes  
Permitted: Yes  
Wet space: No  
Addition: No  
Conversion: No

3421 Exeter Street Southwest, South Roanoke, Roanoke,  
Roanoke city, Virginia, United States, 24014

## 18 Floor 2 - Primary Bedroom



Dimensions: 13'11" x 17'1"  
Area: 239 sq. ft  
Counted as living area: Yes

Heated: Yes  
Finished: Yes  
Enclosed: Yes  
Contiguous: Yes  
Permitted: Yes  
Wet space: No  
Addition: No  
Conversion: No

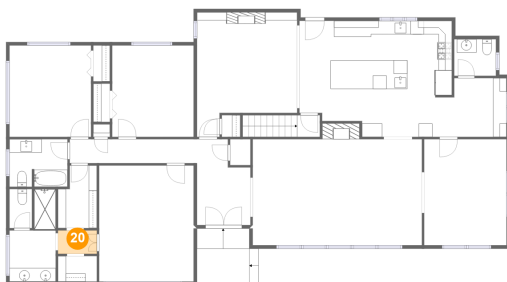
## 19 Floor 2 - Office



Dimensions: 10'6" x 8'8"  
Area: 83 sq. ft  
Counted as living area: Yes

Heated: Yes  
Finished: Yes  
Enclosed: Yes  
Contiguous: Yes  
Permitted: Yes  
Wet space: No  
Addition: No  
Conversion: No

## 20 Floor 2 - Hall

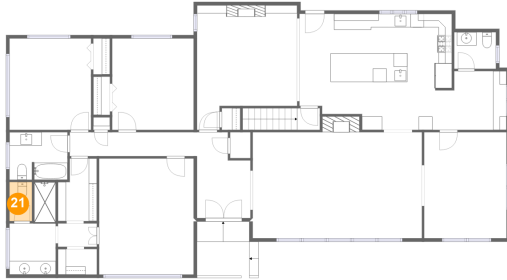


Dimensions: 5'9" x 3'5"  
Area: 20 sq. ft  
Counted as living area: Yes

Heated: Yes  
Finished: Yes  
Enclosed: Yes  
Contiguous: Yes  
Permitted: Yes  
Wet space: No  
Addition: No  
Conversion: No

3421 Exeter Street Southwest, South Roanoke, Roanoke,  
Roanoke city, Virginia, United States, 24014

## 21 Floor 2 - WC



Dimensions: 3'4" x 5'9"  
Area: 19 sq. ft  
Counted as living area: Yes

Heated: Yes  
Finished: Yes  
Enclosed: Yes  
Contiguous: Yes  
Permitted: Yes  
Wet space: Yes  
Addition: No  
Conversion: No

## 22 Floor 2 - Foyer



Dimensions: 7'11" x 12'8"  
Area: 86 sq. ft  
Counted as living area: Yes

Heated: Yes  
Finished: Yes  
Enclosed: Yes  
Contiguous: Yes  
Permitted: Yes  
Wet space: No  
Addition: No  
Conversion: No

## 23 Floor 2 - WC

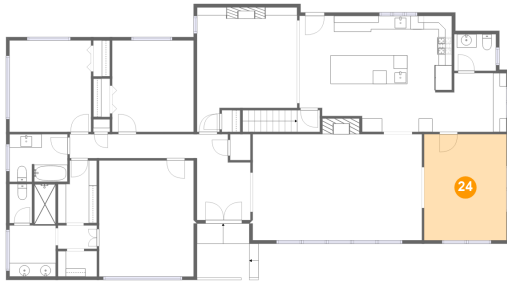


Dimensions: 6'2" x 5'5"  
Area: 33 sq. ft  
Counted as living area: Yes

Heated: Yes  
Finished: Yes  
Enclosed: Yes  
Contiguous: Yes  
Permitted: Yes  
Wet space: Yes  
Addition: No  
Conversion: No

3421 Exeter Street Southwest, South Roanoke, Roanoke,  
Roanoke city, Virginia, United States, 24014

## 24 Floor 2 - Dining Room



Dimensions: 12'2" x 15'8"  
Area: 190 sq. ft  
Counted as living area: Yes

Heated: Yes  
Finished: Yes  
Enclosed: Yes  
Contiguous: Yes  
Permitted: Yes  
Wet space: No  
Addition: No  
Conversion: No

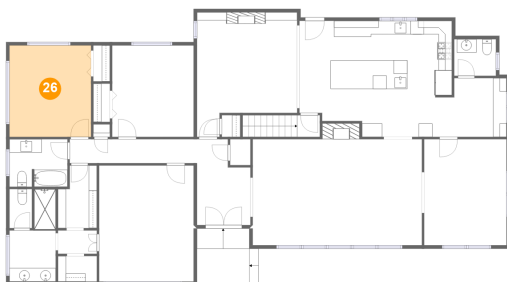
## 25 Floor 2 - W.I.C.



Dimensions: 5'9" x 3'9"  
Area: 22 sq. ft  
Counted as living area: Yes

Heated: Yes  
Finished: Yes  
Enclosed: Yes  
Contiguous: Yes  
Permitted: Yes  
Wet space: No  
Addition: No  
Conversion: No

## 26 Floor 2 - Bedroom



Dimensions: 12'0" x 13'5"  
Area: 162 sq. ft  
Counted as living area: Yes

Heated: Yes  
Finished: Yes  
Enclosed: Yes  
Contiguous: Yes  
Permitted: Yes  
Wet space: No  
Addition: No  
Conversion: No