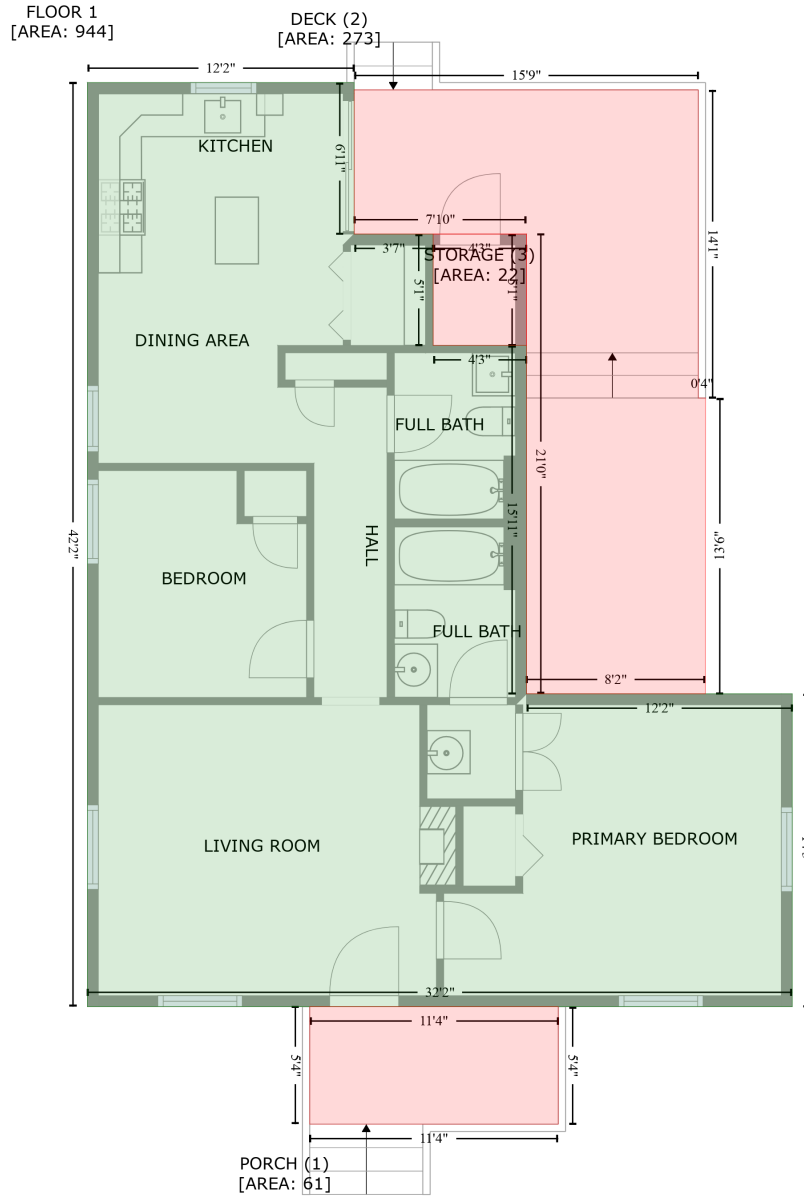


1004 North Fayetteville Avenue, Dunn, Harnett County, North Carolina, United States, 28334

Gross Living Area: 944 sq. ft



Space	Area (sq. ft)	Calculation <small>Coordinate Polygon Area Algorithm using inches</small>
FLOOR 1 (Living area)	944	$-\left((264.9 + 411.2) * (-34.2 - -34.2) + (411.2 + 411.2) * (-34.2 - 48.8) + (411.2 + 454.5) * (48.8 - 48.8) + (454.5 + 454.5) * (48.8 - 109.9) + (454.5 + 505.7) * (109.9 - 109.9) + (505.7 + 505.7) * (109.9 - 300.8) + (505.7 + 651.4) * (300.8 - 300.8) + (651.4 + 651.4) * (300.8 - 472.2) + (651.4 + 264.9) * (472.2 - 472.2) + (264.9 + 264.9) * (472.2 - -34.2)\right) * 0.5 * 0.00694$
PORCH (Non-living area)	61	$-\left((523.1 + 523.1) * (472.2 - 536.6) + (523.1 + 386.8) * (536.6 - 536.6) + (386.8 + 386.8) * (536.6 - 472.2) + (386.8 + 523.1) * (472.2 - 472.2)\right) * 0.5 * 0.00694$

1004 North Fayetteville Avenue, Dunn, Harnett County, North Carolina, United States, 28334

Gross Living Area: 944 sq. ft

Space	Area (sq. ft)	Calculation <small>Coordinate Polygon Area Algorithm using inches</small>
DECK (Non-living area)	273	$-((599.8 + 599.8) * (-30.2 - 138.7) + (599.8 + 603.8) * (138.7 - 138.7) + (603.8 + 603.7) * (138.7 - 300.8) + (603.7 + 505.7) * (300.8 - 300.8) + (505.7 + 505.7) * (300.8 - 48.8) + (505.7 + 411.2) * (48.8 - 48.8) + (411.2 + 411.2) * (48.8 - -30.2) + (411.2 + 599.8) * (-30.2 - -30.2)) * 0.5 * 0.00694$
STORAGE (Non-living area)	22	$-((505.7 + 505.7) * (48.8 - 109.9) + (505.7 + 454.5) * (109.9 - 109.9) + (454.5 + 454.5) * (109.9 - 48.8) + (454.5 + 505.7) * (48.8 - 48.8)) * 0.5 * 0.00694$