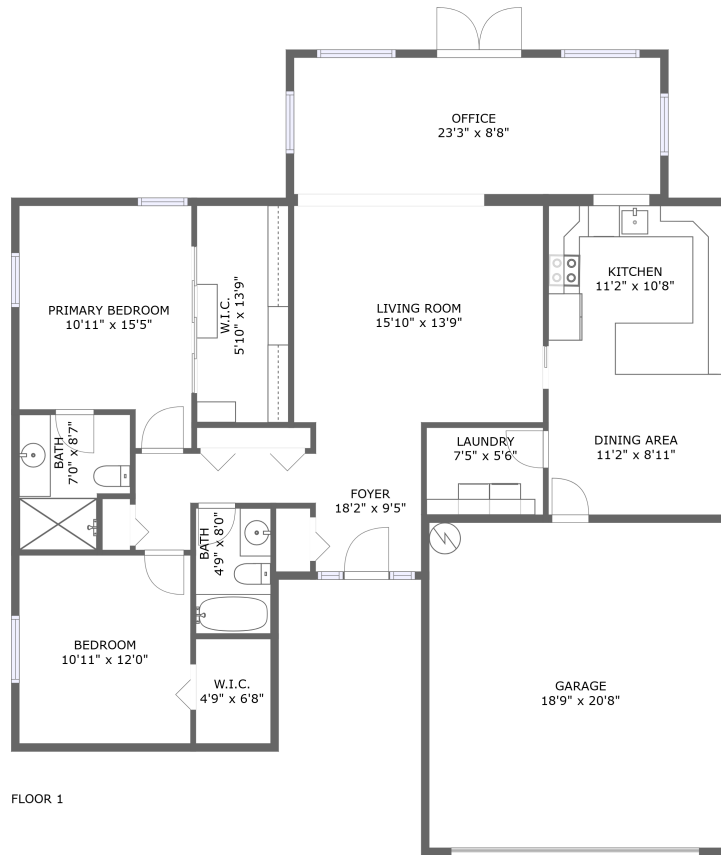


13861 Joyce Drive, Del Prado, Largo, Pinellas County, Florida, United States, 33774



Property Summary

 **1** garages

 **2** bedrooms

 **2** bathrooms

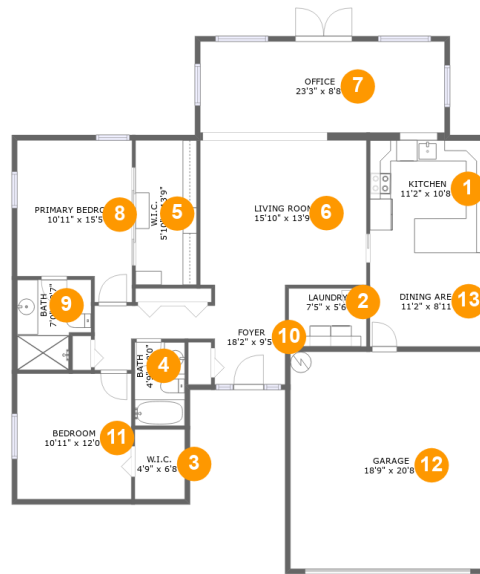
 **0** half baths

 **1** floors

 **1,455** Gross Living Area sqft

 **1,871** total sqft

13861 Joyce Drive, Del Prado, Largo, Pinellas County, Florida, United States, 33774



Room Dimensions

Floor 1

Total sqft: 1871

Living area: 1455

#	Room name	Dimensions	Area (sqft)	Counted as Living Area
1	Kitchen	11'2" x 10'8"	122 sq. ft	Yes
2	Laundry	7'5" x 5'6"	41 sq. ft	Yes
3	W.i.c.	4'9" x 6'8"	32 sq. ft	Yes
4	Bath	4'9" x 8'0"	38 sq. ft	Yes
5	W.i.c.	5'10" x 13'9"	80 sq. ft	Yes
6	Living Room	15'10" x 13'9"	218 sq. ft	Yes
7	Office	23'3" x 8'8"	202 sq. ft	Yes
8	Primary Bedroom	10'11" x 15'5"	151 sq. ft	Yes
9	Bath	7'0" x 8'7"	53 sq. ft	Yes
10	Foyer	18'2" x 9'5"	110 sq. ft	Yes
11	Bedroom	10'11" x 12'0"	130 sq. ft	Yes

Scan captured on Tue, 06 Aug 2024 16:32:05 GMT

Information is calculated by CubiCasa technology; deemed highly reliable but not guaranteed.

**13861 Joyce Drive, Del Prado, Largo, Pinellas
County, Florida, United States, 33774**

#	Room name	Dimensions	Area (sqft)	Counted as Living Area
12	Garage	18'9" x 20'8"	387 sq. ft	No
13	Dining Area	11'2" x 8'11"	99 sq. ft	Yes

13861 Joyce Drive, Del Prado, Largo, Pinellas County, Florida, United States, 33774

1 Floor 1 - Kitchen



Dimensions: 11'2" x 10'8"
Area: 122 sq. ft
Counted as Living Area:
Yes

Heated: Yes
Finished: Yes
Enclosed: Yes
Contiguous:
Yes
Permitted: Yes
Wet Space: No
Addition: No
Conversion: No

2 Floor 1 - Laundry



Dimensions: 7'5" x 5'6"
Area: 41 sq. ft
Counted as Living Area:
Yes

Heated: Yes
Finished: Yes
Enclosed: Yes
Contiguous:
Yes
Permitted: Yes
Wet Space: No
Addition: No
Conversion: No

13861 Joyce Drive, Del Prado, Largo, Pinellas County, Florida, United States, 33774

3 Floor 1 - W.i.c.



Dimensions: 4'9" x 6'8"
Area: 32 sq. ft
Counted as Living Area:
Yes

Heated: Yes
Finished: Yes
Enclosed: Yes
Contiguous:
Yes
Permitted: Yes
Wet Space: No
Addition: No
Conversion: No

4 Floor 1 - Bath



Dimensions: 4'9" x 8'0"
Area: 38 sq. ft
Counted as Living Area:
Yes

Heated: Yes
Finished: Yes
Enclosed: Yes
Contiguous:
Yes
Permitted: Yes
Wet Space: Yes
Addition: No
Conversion: No

5 Floor 1 - W.i.c.

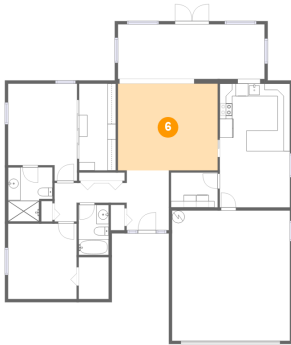


Dimensions: 5'10" x 13'9"
Area: 80 sq. ft
Counted as Living Area:
Yes

Heated: Yes
Finished: Yes
Enclosed: Yes
Contiguous:
Yes
Permitted: Yes
Wet Space: No
Addition: No
Conversion: No

13861 Joyce Drive, Del Prado, Largo, Pinellas County, Florida, United States, 33774

6 Floor 1 - Living Room



Dimensions: 15'10" x 13'9"
Area: 218 sq. ft
Counted as Living Area:
Yes

Heated: Yes
Finished: Yes
Enclosed: Yes
Contiguous:
Yes
Permitted: Yes
Wet Space: No
Addition: No
Conversion: No

7 Floor 1 - Office



Dimensions: 23'3" x 8'8"
Area: 202 sq. ft
Counted as Living Area:
Yes

Heated: Yes
Finished: Yes
Enclosed: Yes
Contiguous:
Yes
Permitted: Yes
Wet Space: No
Addition: No
Conversion: No

8 Floor 1 - Primary Bedroom



Dimensions: 10'11" x 15'5"
Area: 151 sq. ft
Counted as Living Area:
Yes

Heated: Yes
Finished: Yes
Enclosed: Yes
Contiguous:
Yes
Permitted: Yes
Wet Space: No
Addition: No
Conversion: No

13861 Joyce Drive, Del Prado, Largo, Pinellas County, Florida, United States, 33774

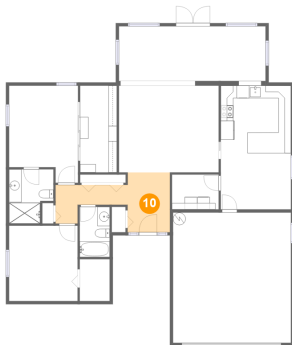
9 Floor 1 - Bath



Dimensions: 7'0" x 8'7"
Area: 53 sq. ft
Counted as Living Area:
Yes

Heated: Yes
Finished: Yes
Enclosed: Yes
Contiguous:
Yes
Permitted: Yes
Wet Space: Yes
Addition: No
Conversion: No

10 Floor 1 - Foyer



Dimensions: 18'2" x 9'5"
Area: 110 sq. ft
Counted as Living Area:
Yes

Heated: Yes
Finished: Yes
Enclosed: Yes
Contiguous:
Yes
Permitted: Yes
Wet Space: No
Addition: No
Conversion: No

11 Floor 1 - Bedroom

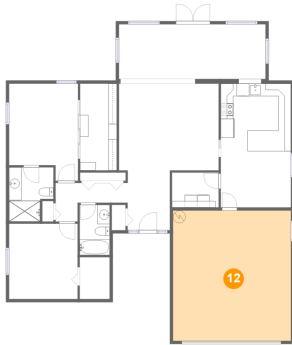


Dimensions: 10'11" x 12'0"
Area: 130 sq. ft
Counted as Living Area:
Yes

Heated: Yes
Finished: Yes
Enclosed: Yes
Contiguous:
Yes
Permitted: Yes
Wet Space: No
Addition: No
Conversion: No

13861 Joyce Drive, Del Prado, Largo, Pinellas County, Florida, United States, 33774

12 Floor 1 - Garage



Dimensions: 18'9" x 20'8"
Area: 387 sq. ft
Counted as Living Area: No

Heated: No
Finished: No
Enclosed: Yes
Contiguous: Yes
Permitted: Yes
Wet Space: No
Addition: No
Conversion: No

13 Floor 1 - Dining Area



Dimensions: 11'2" x 8'11"
Area: 99 sq. ft
Counted as Living Area: Yes

Heated: Yes
Finished: Yes
Enclosed: Yes
Contiguous: Yes
Permitted: Yes
Wet Space: No
Addition: No
Conversion: No