


200 Valdiva Street, Port Charlotte, Charlotte County, Florida, United States, 33983



Property Summary

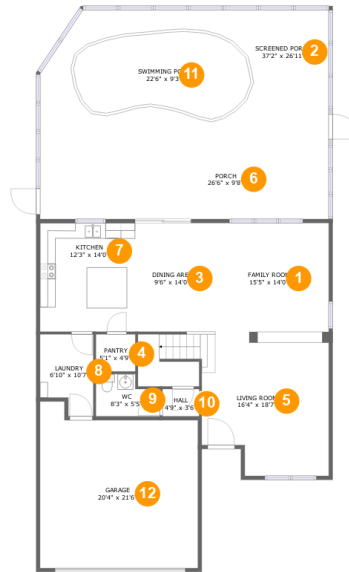
 **1** garages  **3** bedrooms  **2** bathrooms  **1** half baths

 **2** floors

 **2,377** Gross Living Area sqft

 **3,617** total sqft

200 Valdiva Street, Port Charlotte, Charlotte County, Florida, United States, 33983



Room Dimensions

Floor 1

Total sqft: 2331

Living area: 1091

#	Room name	Dimensions	Area (sqft)	Counted as Living Area
1	Family Room	15'5" x 14'0"	216 sq. ft	Yes
2	Screened Porch	37'2" x 26'11"	722 sq. ft	No
3	Dining Area	9'6" x 14'0"	133 sq. ft	Yes
4	Pantry	5'1" x 4'9"	24 sq. ft	Yes
5	Living Room	16'4" x 18'7"	334 sq. ft	Yes
6	Porch	26'6" x 9'8"	257 sq. ft	No
7	Kitchen	12'3" x 14'0"	171 sq. ft	Yes
8	Laundry	6'10" x 10'7"	64 sq. ft	Yes
9	Wc	8'3" x 5'5"	39 sq. ft	Yes
10	Hall	4'9" x 3'6"	17 sq. ft	Yes
11	Swimming Pool	22'6" x 9'3"	202 sq. ft	No

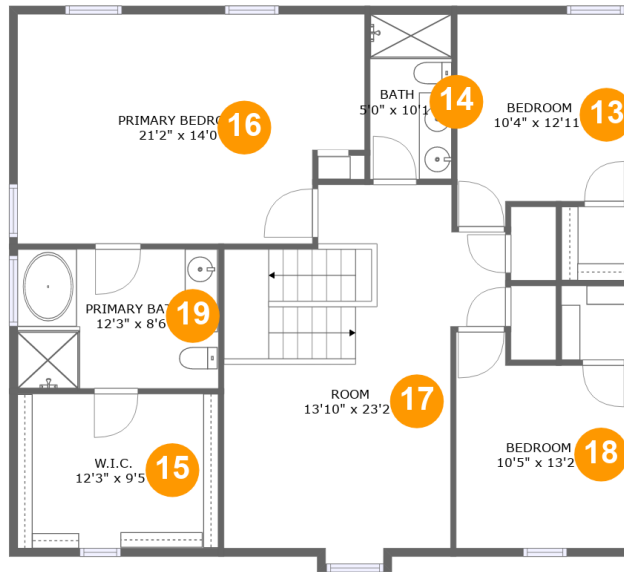
Scan captured on Tue, 18 Jun 2024 03:04:52 GMT

Information is calculated by CubiCasa technology; deemed highly reliable but not guaranteed.

**200 Valdiva Street, Port Charlotte, Charlotte
County, Florida, United States, 33983**

#	Room name	Dimensions	Area (sqft)	Counted as Living Area
12	Garage	20'4" x 21'6"	395 sq. ft	No

200 Valdiva Street, Port Charlotte, Charlotte County, Florida, United States, 33983



Room Dimensions

Floor 2

Total sqft: 1286

Living area: 1286

#	Room name	Dimensions	Area (sqft)	Counted as Living Area
13	Bedroom	10'4" x 12'11"	122 sq. ft	Yes
14	Bath	5'0" x 10'1"	50 sq. ft	Yes
15	W.i.c.	12'3" x 9'5"	115 sq. ft	Yes
16	Primary Bedroom	21'2" x 14'0"	279 sq. ft	Yes
17	Room	13'10" x 23'2"	307 sq. ft	Yes
18	Bedroom	10'5" x 13'2"	122 sq. ft	Yes
19	Primary Bath	12'3" x 8'6"	104 sq. ft	Yes

200 Valdiva Street, Port Charlotte, Charlotte County, Florida, United States, 33983

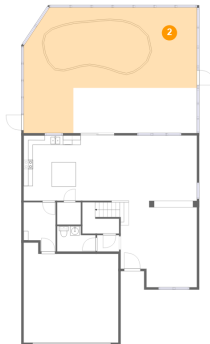
1 Floor 1 - Family Room



Dimensions: 15'5" x 14'0"
Area: 216 sq. ft
Counted as Living Area:
Yes

Heated: Yes
Finished: Yes
Enclosed: Yes
Contiguous:
Yes
Permitted: Yes
Wet Space: No
Addition: No
Conversion: No

2 Floor 1 - Screened Porch

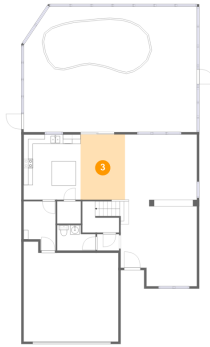


Dimensions: 37'2" x 26'11"
Area: 722 sq. ft
Counted as Living Area: No

Heated: No
Finished: Yes
Enclosed: No
Contiguous: Yes
Permitted: Yes
Wet Space: No
Addition: No
Conversion: No

200 Valdiva Street, Port Charlotte, Charlotte County, Florida, United States, 33983

3 Floor 1 - Dining Area



Dimensions: 9'6" x 14'0"
Area: 133 sq. ft
Counted as Living Area:
Yes

Heated: Yes
Finished: Yes
Enclosed: Yes
Contiguous:
Yes
Permitted: Yes
Wet Space: No
Addition: No
Conversion: No

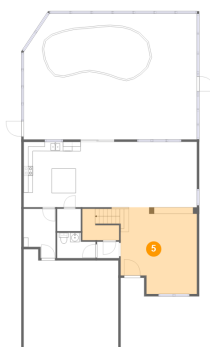
4 Floor 1 - Pantry



Dimensions: 5'1" x 4'9"
Area: 24 sq. ft
Counted as Living Area:
Yes

Heated: Yes
Finished: Yes
Enclosed: Yes
Contiguous:
Yes
Permitted: Yes
Wet Space: No
Addition: No
Conversion: No

5 Floor 1 - Living Room

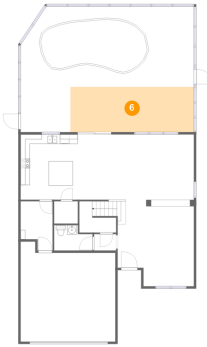


Dimensions: 16'4" x 18'7"
Area: 334 sq. ft
Counted as Living Area:
Yes

Heated: Yes
Finished: Yes
Enclosed: Yes
Contiguous:
Yes
Permitted: Yes
Wet Space: No
Addition: No
Conversion: No

200 Valdiva Street, Port Charlotte, Charlotte County, Florida, United States, 33983

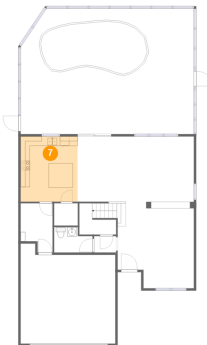
6 Floor 1 - Porch



Dimensions: 26'6" x 9'8"
Area: 257 sq. ft
Counted as Living Area: No

Heated: No
Finished: Yes
Enclosed: No
Contiguous: Yes
Permitted: Yes
Wet Space: No
Addition: No
Conversion: No

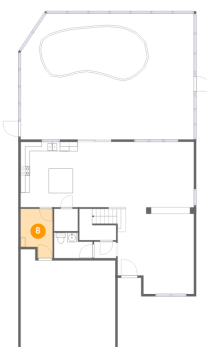
7 Floor 1 - Kitchen



Dimensions: 12'3" x 14'0"
Area: 171 sq. ft
Counted as Living Area: Yes

Heated: Yes
Finished: Yes
Enclosed: Yes
Contiguous: Yes
Permitted: Yes
Wet Space: No
Addition: No
Conversion: No

8 Floor 1 - Laundry



Dimensions: 6'10" x 10'7"
Area: 64 sq. ft
Counted as Living Area: Yes

Heated: Yes
Finished: Yes
Enclosed: Yes
Contiguous: Yes
Permitted: Yes
Wet Space: No
Addition: No
Conversion: No

200 Valdiva Street, Port Charlotte, Charlotte County, Florida, United States, 33983

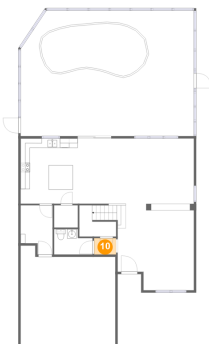
9 Floor 1 - Wc



Dimensions: 8'3" x 5'5"
Area: 39 sq. ft
Counted as Living Area:
Yes

Heated: Yes
Finished: Yes
Enclosed: Yes
Contiguous:
Yes
Permitted: Yes
Wet Space: Yes
Addition: No
Conversion: No

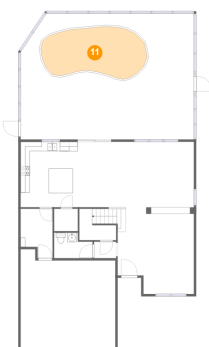
10 Floor 1 - Hall



Dimensions: 4'9" x 3'6"
Area: 17 sq. ft
Counted as Living Area:
Yes

Heated: Yes
Finished: Yes
Enclosed: Yes
Contiguous:
Yes
Permitted: Yes
Wet Space: No
Addition: No
Conversion: No

11 Floor 1 - Swimming Pool



Dimensions: 22'6" x 9'3"
Area: 202 sq. ft
Counted as Living Area: No

Heated: No
Finished: No
Enclosed: No
Contiguous: Yes
Permitted: No
Wet Space: No
Addition: No
Conversion: No

200 Valdiva Street, Port Charlotte, Charlotte County, Florida, United States, 33983

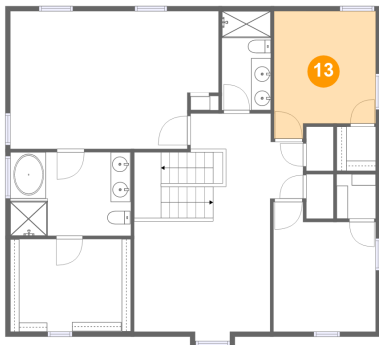
12 Floor 1 - Garage



Dimensions: 20'4" x 21'6"
Area: 395 sq. ft
Counted as Living Area: No

Heated: No
Finished: No
Enclosed: Yes
Contiguous: Yes
Permitted: Yes
Wet Space: No
Addition: No
Conversion: No

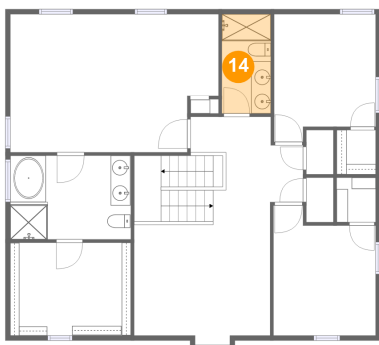
13 Floor 2 - Bedroom



Dimensions: 10'4" x 12'11"
Area: 122 sq. ft
Counted as Living Area: Yes

Heated: Yes
Finished: Yes
Enclosed: Yes
Contiguous: Yes
Permitted: Yes
Wet Space: No
Addition: No
Conversion: No

14 Floor 2 - Bath

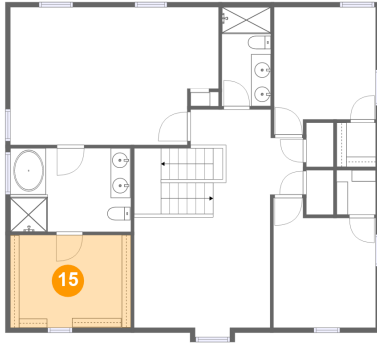


Dimensions: 5'0" x 10'1"
Area: 50 sq. ft
Counted as Living Area: Yes

Heated: Yes
Finished: Yes
Enclosed: Yes
Contiguous: Yes
Permitted: Yes
Wet Space: Yes
Addition: No
Conversion: No

200 Valdiva Street, Port Charlotte, Charlotte County, Florida, United States, 33983

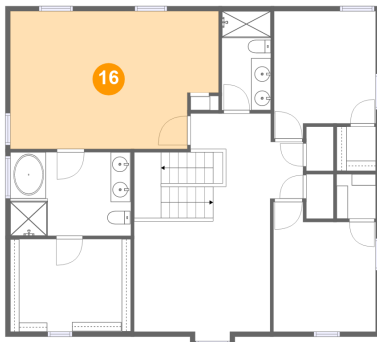
15 Floor 2 - W.i.c.



Dimensions: 12'3" x 9'5"
Area: 115 sq. ft
Counted as Living Area:
Yes

Heated: Yes
Finished: Yes
Enclosed: Yes
Contiguous:
Yes
Permitted: Yes
Wet Space: No
Addition: No
Conversion: No

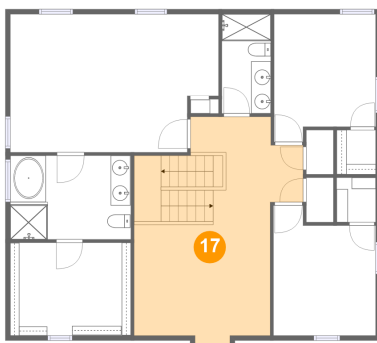
16 Floor 2 - Primary Bedroom



Dimensions: 21'2" x 14'0"
Area: 279 sq. ft
Counted as Living Area:
Yes

Heated: Yes
Finished: Yes
Enclosed: Yes
Contiguous:
Yes
Permitted: Yes
Wet Space: No
Addition: No
Conversion: No

17 Floor 2 - Room

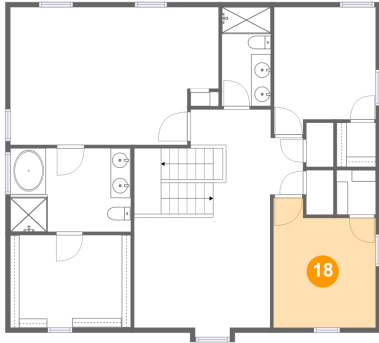


Dimensions: 13'10" x 23'2"
Area: 307 sq. ft
Counted as Living Area:
Yes

Heated: Yes
Finished: Yes
Enclosed: Yes
Contiguous:
Yes
Permitted: Yes
Wet Space: No
Addition: No
Conversion: No

200 Valdiva Street, Port Charlotte, Charlotte County, Florida, United States, 33983

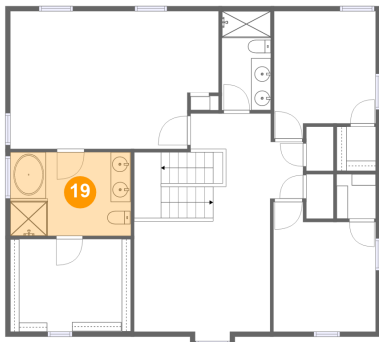
18 Floor 2 - Bedroom



Dimensions: 10'5" x 13'2"
Area: 122 sq. ft
Counted as Living Area:
Yes

Heated: Yes
Finished: Yes
Enclosed: Yes
Contiguous:
Yes
Permitted: Yes
Wet Space: No
Addition: No
Conversion: No

19 Floor 2 - Primary Bath



Dimensions: 12'3" x 8'6"
Area: 104 sq. ft
Counted as Living Area:
Yes

Heated: Yes
Finished: Yes
Enclosed: Yes
Contiguous:
Yes
Permitted: Yes
Wet Space: Yes
Addition: No
Conversion: No