

Home report

2072 Quail Run Drive, Bowling Green, Warren County, Kentucky,
United States, 42104



Total Area: 4624 sq. ft
Below Ground: 1062 sq. ft, Floor 2: 2674 sq. ft, Floor 3: 888 sq. ft
Excluded: Storage 257 sq. ft, Electrical room 17 sq. ft, Garage 449 sq. ft, Patio 263 sq. ft, Porch 207 sq. ft, Open to below 165 sq. ft, Walls: 309 sq. ft

Property summary

**3** Floors

**5** Bedrooms

**3** Bathrooms

Home report

**2072 Quail Run Drive, Bowling Green, Warren County, Kentucky,
United States, 42104**



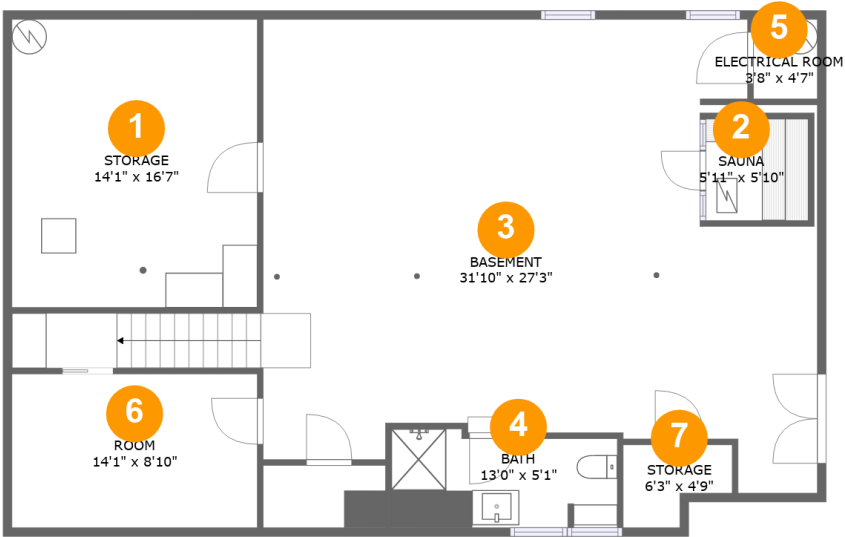
2
Half baths



1
Garages

Home report

2072 Quail Run Drive, Bowling Green, Warren County, Kentucky,
United States, 42104



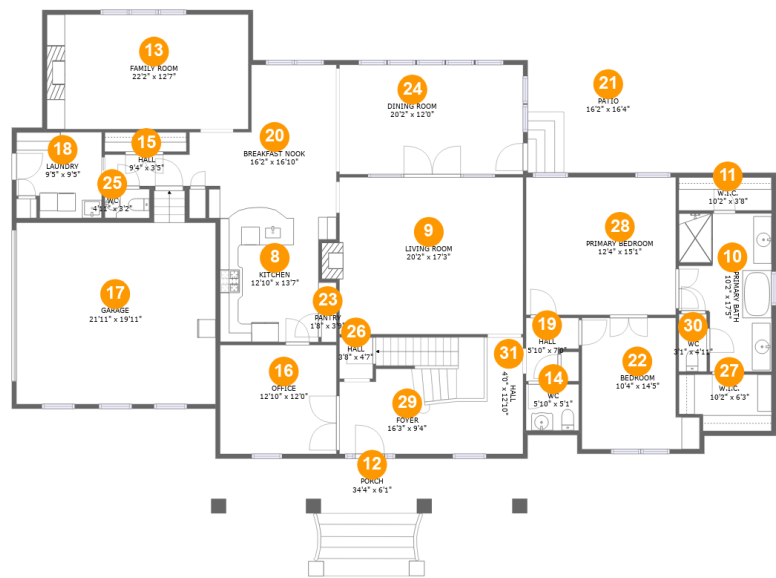
Room dimensions

Floor 1 Below ground Total:1062sqft Excluded: 274sqft

#		Max Dimensions	sqft	Included
1	Storage	14'1" x 16'7"	233 sq. ft	No
2	Sauna	5'11" x 5'10"	34 sq. ft	Yes
3	Basement	31'10" x 27'3"	762 sq. ft	Yes
4	Bath	13'0" x 5'1"	68 sq. ft	Yes
5	Electrical Room	3'8" x 4'7"	17 sq. ft	No
6	Room	14'1" x 8'10"	125 sq. ft	Yes
7	Storage	6'3" x 4'9"	24 sq. ft	No

Home report

2072 Quail Run Drive, Bowling Green, Warren County, Kentucky,
United States, 42104



Room dimensions

Floor 2 Total:2674sqft Excluded: 919sqft

#		Max Dimensions	sqft	Included
8	Kitchen	12'10" x 13'7"	157 sq. ft	Yes
9	Living Room	20'2" x 17'3"	356 sq. ft	Yes
10	Primary Bath	10'2" x 17'5"	153 sq. ft	Yes
11	W.I.C.	10'2" x 3'8"	37 sq. ft	Yes
12	Porch	34'4" x 6'1"	207 sq. ft	No
13	Family Room	22'2" x 12'7"	280 sq. ft	Yes
14	WC	5'10" x 5'1"	29 sq. ft	Yes
15	Hall	9'4" x 3'5"	32 sq. ft	Yes
16	Office	12'10" x 12'0"	153 sq. ft	Yes
17	Garage	21'11" x 19'11"	449 sq. ft	No
18	Laundry	9'5" x 9'5"	82 sq. ft	Yes

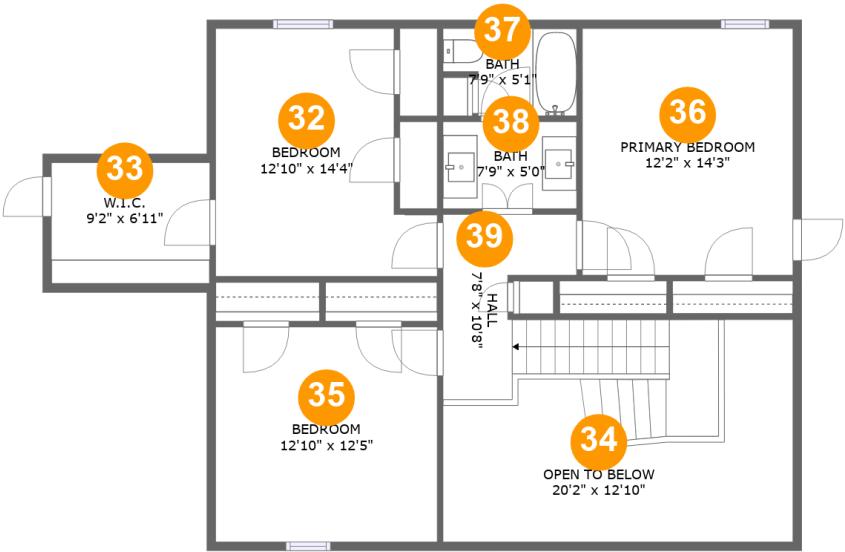
Home report

**2072 Quail Run Drive, Bowling Green, Warren County, Kentucky,
United States, 42104**

#		Max Dimensions	sqft	Included
19	Hall	5'10" x 7'0"	32 sq. ft	Yes
20	Breakfast Nook	16'2" x 16'10"	214 sq. ft	Yes
21	Patio	16'2" x 16'4"	263 sq. ft	No
22	Bedroom	10'4" x 14'5"	158 sq. ft	Yes
23	Pantry	1'8" x 3'9"	6 sq. ft	Yes
24	Dining Room	20'2" x 12'0"	243 sq. ft	Yes
25	WC	4'11" x 3'2"	16 sq. ft	Yes
26	Hall	3'8" x 4'7"	17 sq. ft	Yes
27	W.I.C.	10'2" x 6'3"	59 sq. ft	Yes
28	Primary Bedroom	12'4" x 15'1"	249 sq. ft	Yes
29	Foyer	16'3" x 9'4"	187 sq. ft	Yes
30	WC	3'1" x 4'11"	15 sq. ft	Yes
31	Hall	4'0" x 12'10"	51 sq. ft	Yes

Home report

2072 Quail Run Drive, Bowling Green, Warren County, Kentucky,
United States, 42104

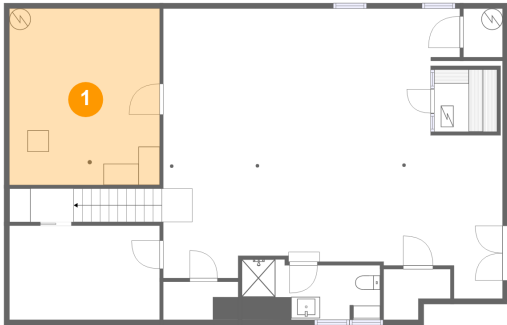


Room dimensions

Floor 3 Total:888sqft Excluded: 165sqft

#		Max Dimensions	sqft	Included
32	Bedroom	12'10" x 14'4"	156 sq. ft	Yes
33	W.I.C.	9'2" x 6'11"	64 sq. ft	Yes
34	Open To Below	20'2" x 12'10"	165 sq. ft	No
35	Bedroom	12'10" x 12'5"	159 sq. ft	Yes
36	Primary Bedroom	12'2" x 14'3"	173 sq. ft	Yes
37	Bath	7'9" x 5'1"	34 sq. ft	Yes
38	Bath	7'9" x 5'0"	39 sq. ft	Yes
39	Hall	7'8" x 10'8"	131 sq. ft	Yes

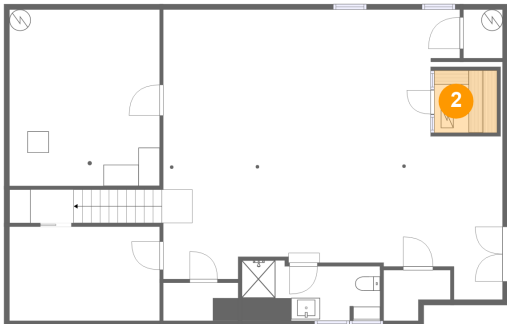
1 Floor 1 - Storage



Max Dimensions: 14'1" x 16'7"
Calculated Area: 233 sq. ft
Included: No

Heated: No
Finished: No
Enclosed: No
Contiguous: Yes
Permitted: Yes
Wet space: No
Addition: No
Conversion: No

2 Floor 1 - Sauna

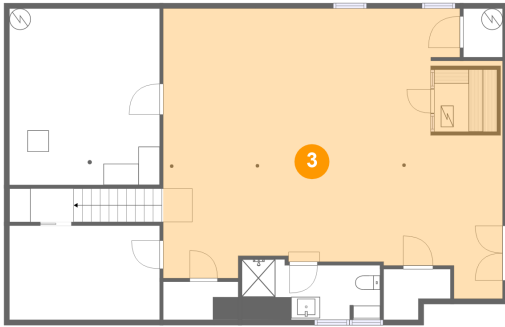


Max Dimensions: 5'11" x 5'10"
Calculated Area: 34 sq. ft
Included: Yes

Heated: Yes
Finished: Yes
Enclosed: Yes
Contiguous: Yes
Permitted: Yes
Wet space: No
Addition: No
Conversion: No

2072 Quail Run Drive, Bowling Green, Warren County, Kentucky,
United States, 42104

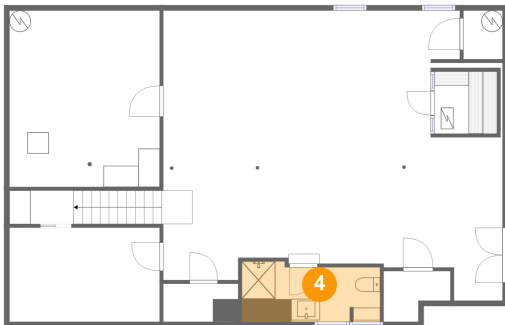
3 Floor 1 - Basement



Max Dimensions: 31'10" x 27'3"
Calculated Area: 762 sq. ft
Included: Yes

Heated: Yes
Finished: Yes
Enclosed: Yes
Contiguous: Yes
Permitted: Yes
Wet space: No
Addition: No
Conversion: No

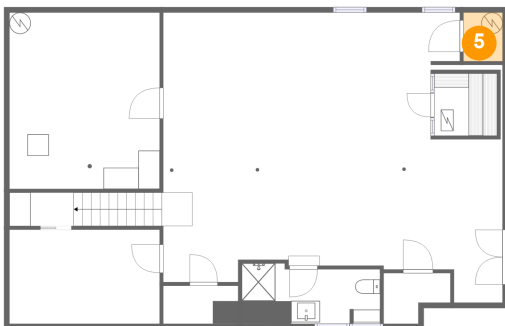
4 Floor 1 - Bath



Max Dimensions: 13'0" x 5'1"
Calculated Area: 68 sq. ft
Included: Yes

Heated: Yes
Finished: Yes
Enclosed: Yes
Contiguous: Yes
Permitted: Yes
Wet space: Yes
Addition: No
Conversion: No

5 Floor 1 - Electrical Room



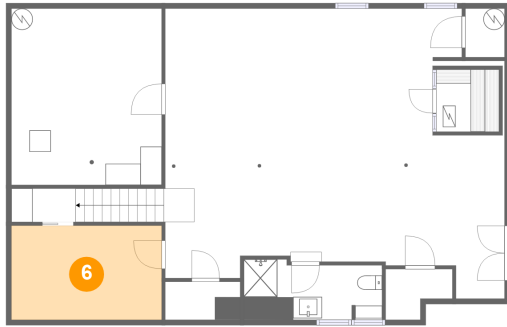
Max Dimensions: 3'8" x 4'7"
Calculated Area: 17 sq. ft
Included: No

Heated: No
Finished: No
Enclosed: Yes
Contiguous: Yes
Permitted: Yes
Wet space: No
Addition: No
Conversion: No

Home report

2072 Quail Run Drive, Bowling Green, Warren County, Kentucky,
United States, 42104

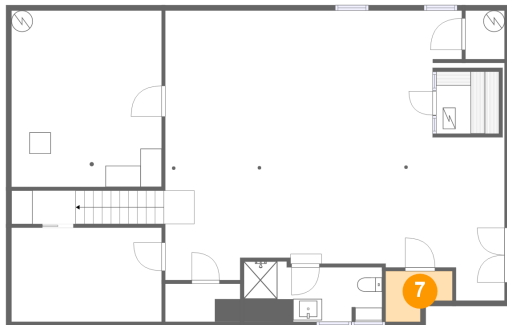
6 Floor 1 - Room



Max Dimensions: 14'1" x 8'10"
Calculated Area: 125 sq. ft
Included: Yes

Heated: Yes
Finished: Yes
Enclosed: Yes
Contiguous: Yes
Permitted: Yes
Wet space: No
Addition: No
Conversion: No

7 Floor 1 - Storage



Max Dimensions: 6'3" x 4'9"
Calculated Area: 24 sq. ft
Included: No

Heated: No
Finished: No
Enclosed: No
Contiguous: Yes
Permitted: Yes
Wet space: No
Addition: No
Conversion: No

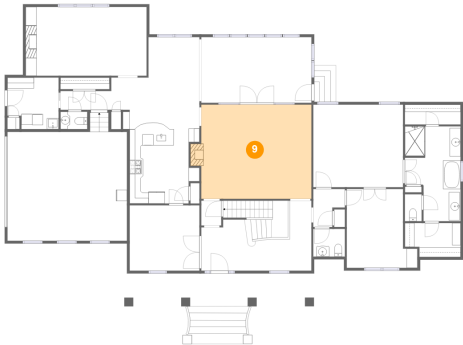
8 Floor 2 - Kitchen



Max Dimensions: 12'10" x 13'7"
Calculated Area: 157 sq. ft
Included: Yes

Heated: Yes
Finished: Yes
Enclosed: Yes
Contiguous: Yes
Permitted: Yes
Wet space: No
Addition: No
Conversion: No

9 Floor 2 - Living Room



Max Dimensions: 20'2" x 17'3"
Calculated Area: 356 sq. ft
Included: Yes

Heated: Yes
Finished: Yes
Enclosed: Yes
Contiguous: Yes
Permitted: Yes
Wet space: No
Addition: No
Conversion: No

10 Floor 2 - Primary Bath



Max Dimensions: 10'2" x 17'5"
Calculated Area: 153 sq. ft
Included: Yes

Heated: Yes
Finished: Yes
Enclosed: Yes
Contiguous: Yes
Permitted: Yes
Wet space: Yes
Addition: No
Conversion: No

11 Floor 2 - W.I.C.



Max Dimensions: 10'2" x 3'8"
Calculated Area: 37 sq. ft
Included: Yes

Heated: Yes
Finished: Yes
Enclosed: Yes
Contiguous: Yes
Permitted: Yes
Wet space: No
Addition: No
Conversion: No

Home report

2072 Quail Run Drive, Bowling Green, Warren County, Kentucky,
United States, 42104

12 Floor 2 - Porch



Max Dimensions: 34'4" x 6'1"
Calculated Area: 207 sq. ft
Included: No

Heated: No
Finished: Yes
Enclosed: No
Contiguous: Yes
Permitted: Yes
Wet space: No
Addition: No
Conversion: No

13 Floor 2 - Family Room



Max Dimensions: 22'2" x 12'7"
Calculated Area: 280 sq. ft
Included: Yes

Heated: Yes
Finished: Yes
Enclosed: Yes
Contiguous: Yes
Permitted: Yes
Wet space: No
Addition: No
Conversion: No

14 Floor 2 - WC



Max Dimensions: 5'10" x 5'1"
Calculated Area: 29 sq. ft
Included: Yes

Heated: Yes
Finished: Yes
Enclosed: Yes
Contiguous: Yes
Permitted: Yes
Wet space: Yes
Addition: No
Conversion: No

2072 Quail Run Drive, Bowling Green, Warren County, Kentucky,
United States, 42104

15 Floor 2 - Hall



Max Dimensions: 9'4" x 3'5"
Calculated Area: 32 sq. ft
Included: Yes

Heated: Yes
Finished: Yes
Enclosed: Yes
Contiguous: Yes
Permitted: Yes
Wet space: No
Addition: No
Conversion: No

16 Floor 2 - Office



Max Dimensions: 12'10" x 12'0"
Calculated Area: 153 sq. ft
Included: Yes

Heated: Yes
Finished: Yes
Enclosed: Yes
Contiguous: Yes
Permitted: Yes
Wet space: No
Addition: No
Conversion: No

17 Floor 2 - Garage



Max Dimensions: 21'11" x 19'11"
Calculated Area: 449 sq. ft
Included: No

Heated: No
Finished: No
Enclosed: Yes
Contiguous: Yes
Permitted: Yes
Wet space: No
Addition: No
Conversion: No

2072 Quail Run Drive, Bowling Green, Warren County, Kentucky,
United States, 42104

18 Floor 2 - Laundry



Max Dimensions: 9'5" x 9'5"
Calculated Area: 82 sq. ft
Included: Yes

Heated: Yes
Finished: Yes
Enclosed: Yes
Contiguous: Yes
Permitted: Yes
Wet space: No
Addition: No
Conversion: No

19 Floor 2 - Hall



Max Dimensions: 5'10" x 7'0"
Calculated Area: 32 sq. ft
Included: Yes

Heated: Yes
Finished: Yes
Enclosed: Yes
Contiguous: Yes
Permitted: Yes
Wet space: No
Addition: No
Conversion: No

20 Floor 2 - Breakfast Nook



Max Dimensions: 16'2" x 16'10"
Calculated Area: 214 sq. ft
Included: Yes

Heated: Yes
Finished: Yes
Enclosed: Yes
Contiguous: Yes
Permitted: Yes
Wet space: No
Addition: No
Conversion: No

Home report

2072 Quail Run Drive, Bowling Green, Warren County, Kentucky,
United States, 42104

21 Floor 2 - Patio



Max Dimensions: 16'2" x 16'4"
Calculated Area: 263 sq. ft
Included: No

Heated: No
Finished: Yes
Enclosed: No
Contiguous: Yes
Permitted: Yes
Wet space: No
Addition: No
Conversion: No

22 Floor 2 - Bedroom



Max Dimensions: 10'4" x 14'5"
Calculated Area: 158 sq. ft
Included: Yes

Heated: Yes
Finished: Yes
Enclosed: Yes
Contiguous: Yes
Permitted: Yes
Wet space: No
Addition: No
Conversion: No

23 Floor 2 - Pantry



Max Dimensions: 1'8" x 3'9"
Calculated Area: 6 sq. ft
Included: Yes

Heated: Yes
Finished: Yes
Enclosed: Yes
Contiguous: Yes
Permitted: Yes
Wet space: No
Addition: No
Conversion: No

Home report

2072 Quail Run Drive, Bowling Green, Warren County, Kentucky,
United States, 42104

24 Floor 2 - Dining Room



Max Dimensions: 20'2" x 12'0"
Calculated Area: 243 sq. ft
Included: Yes

Heated: Yes
Finished: Yes
Enclosed: Yes
Contiguous: Yes
Permitted: Yes
Wet space: No
Addition: No
Conversion: No

25 Floor 2 - WC



Max Dimensions: 4'11" x 3'2"
Calculated Area: 16 sq. ft
Included: Yes

Heated: Yes
Finished: Yes
Enclosed: Yes
Contiguous: Yes
Permitted: Yes
Wet space: Yes
Addition: No
Conversion: No

26 Floor 2 - Hall



Max Dimensions: 3'8" x 4'7"
Calculated Area: 17 sq. ft
Included: Yes

Heated: Yes
Finished: Yes
Enclosed: Yes
Contiguous: Yes
Permitted: Yes
Wet space: No
Addition: No
Conversion: No

Home report

2072 Quail Run Drive, Bowling Green, Warren County, Kentucky,
United States, 42104

27 Floor 2 - W.I.C.



Max Dimensions: 10'2" x 6'3"
Calculated Area: 59 sq. ft
Included: Yes

Heated: Yes
Finished: Yes
Enclosed: Yes
Contiguous: Yes
Permitted: Yes
Wet space: No
Addition: No
Conversion: No

28 Floor 2 - Primary Bedroom



Max Dimensions: 12'4" x 15'1"
Calculated Area: 249 sq. ft
Included: Yes

Heated: Yes
Finished: Yes
Enclosed: Yes
Contiguous: Yes
Permitted: Yes
Wet space: No
Addition: No
Conversion: No

29 Floor 2 - Foyer



Max Dimensions: 16'3" x 9'4"
Calculated Area: 187 sq. ft
Included: Yes

Heated: Yes
Finished: Yes
Enclosed: Yes
Contiguous: Yes
Permitted: Yes
Wet space: No
Addition: No
Conversion: No

30 Floor 2 - WC



Max Dimensions: 3'1" x 4'11"
Calculated Area: 15 sq. ft
Included: Yes

Heated: Yes
Finished: Yes
Enclosed: Yes
Contiguous: Yes
Permitted: Yes
Wet space: Yes
Addition: No
Conversion: No

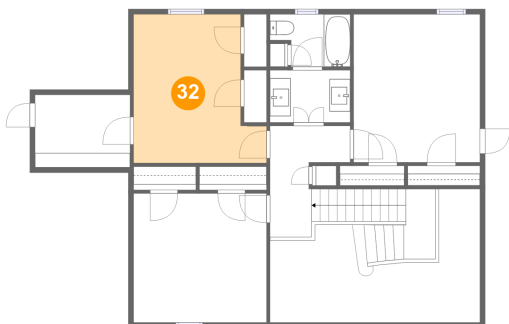
31 Floor 2 - Hall



Max Dimensions: 4'0" x 12'10"
Calculated Area: 51 sq. ft
Included: Yes

Heated: Yes
Finished: Yes
Enclosed: Yes
Contiguous: Yes
Permitted: Yes
Wet space: No
Addition: No
Conversion: No

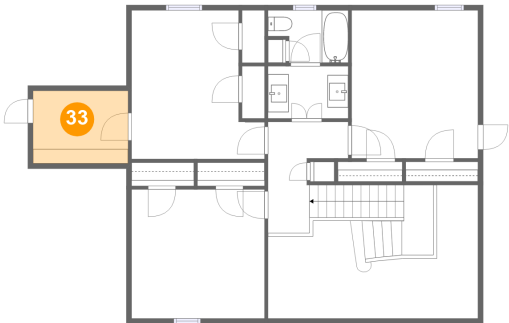
32 Floor 3 - Bedroom



Max Dimensions: 12'10" x 14'4"
Calculated Area: 156 sq. ft
Included: Yes

Heated: Yes
Finished: Yes
Enclosed: Yes
Contiguous: Yes
Permitted: Yes
Wet space: No
Addition: No
Conversion: No

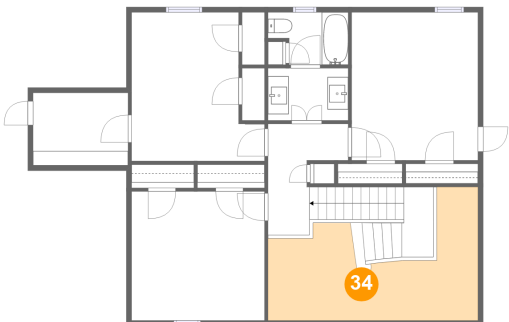
33 Floor 3 - W.I.C.



Max Dimensions: 9'2" x 6'11"
Calculated Area: 64 sq. ft
Included: Yes

Heated: Yes
Finished: Yes
Enclosed: Yes
Contiguous: Yes
Permitted: Yes
Wet space: No
Addition: No
Conversion: No

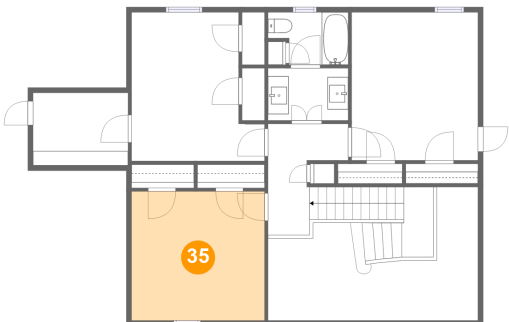
34 Floor 3 - Open To Below



Max Dimensions: 20'2" x 12'10"
Calculated Area: 165 sq. ft
Included: No

Heated: No
Finished: No
Enclosed: No
Contiguous: Yes
Permitted: No
Wet space: No
Addition: No
Conversion: No

35 Floor 3 - Bedroom



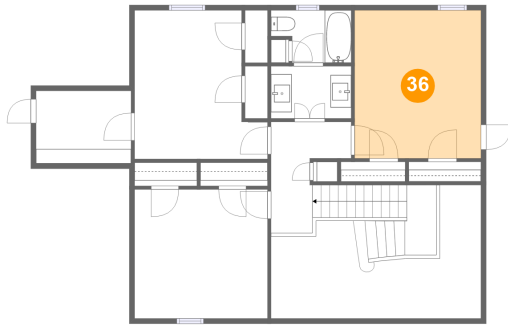
Max Dimensions: 12'10" x 12'5"
Calculated Area: 159 sq. ft
Included: Yes

Heated: Yes
Finished: Yes
Enclosed: Yes
Contiguous: Yes
Permitted: Yes
Wet space: No
Addition: No
Conversion: No

Home report

2072 Quail Run Drive, Bowling Green, Warren County, Kentucky,
United States, 42104

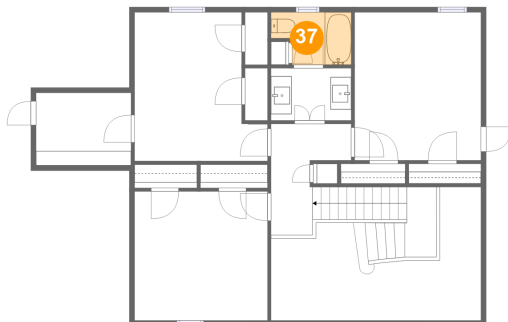
36 Floor 3 - Primary Bedroom



Max Dimensions: 12'2" x 14'3"
Calculated Area: 173 sq. ft
Included: Yes

Heated: Yes
Finished: Yes
Enclosed: Yes
Contiguous: Yes
Permitted: Yes
Wet space: No
Addition: No
Conversion: No

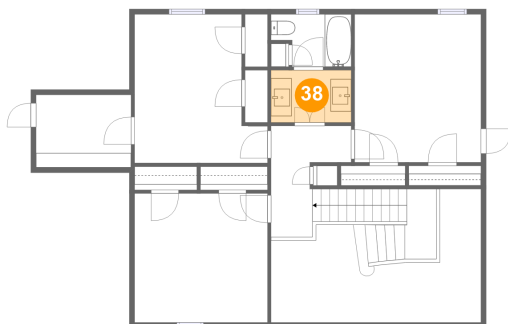
37 Floor 3 - Bath



Max Dimensions: 7'9" x 5'1"
Calculated Area: 34 sq. ft
Included: Yes

Heated: Yes
Finished: Yes
Enclosed: Yes
Contiguous: Yes
Permitted: Yes
Wet space: Yes
Addition: No
Conversion: No

38 Floor 3 - Bath



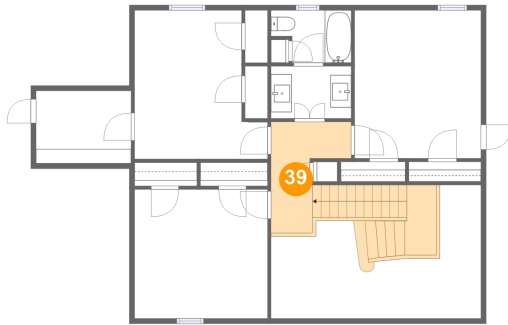
Max Dimensions: 7'9" x 5'0"
Calculated Area: 39 sq. ft
Included: Yes

Heated: Yes
Finished: Yes
Enclosed: Yes
Contiguous: Yes
Permitted: Yes
Wet space: Yes
Addition: No
Conversion: No

Home report

2072 Quail Run Drive, Bowling Green, Warren County, Kentucky,
United States, 42104

39 Floor 3 - Hall



Max Dimensions: 7'8" x
10'8"
Calculated Area: 131 sq. ft
Included: Yes

Heated: Yes
Finished: Yes
Enclosed: Yes
Contiguous:
Yes
Permitted: Yes
Wet space: No
Addition: No
Conversion: No