




430 Mountain Avenue Southwest, Old Southwest,
Roanoke, Roanoke city, Virginia, United States, 24016




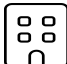
Property summary


**0**
Garages


**3**
Bedrooms

**2**
Bathrooms

**1**
Half baths

**3**
Floors

**1,786**
Gross living
area sqft

**3,136**
Total sqft

430 Mountain Avenue Southwest, Old Southwest,
Roanoke, Roanoke city, Virginia, United States, 24016

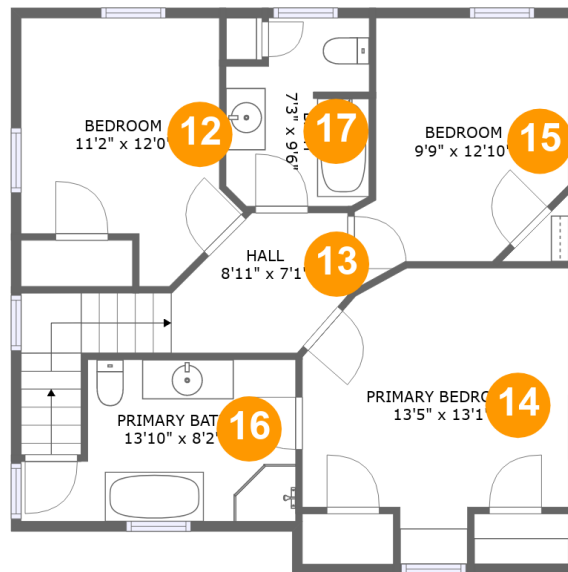


Room dimensions

Floor 1 Total sqft: 1847 Living area: 1003

#		Dimensions	sqft	Counted as living area
1	Patio	25'6" x 18'11"	648 sq. ft	No
2	Utility	5'3" x 9'9"	51 sq. ft	Yes
3	Porch	23'5" x 8'1"	167 sq. ft	No
4	Covered Deck	6'9" x 4'3"	29 sq. ft	No
5	Foyer	10'6" x 11'6"	144 sq. ft	Yes
6	WC	2'2" x 5'7"	12 sq. ft	Yes
7	Kitchen	11'3" x 10'1"	114 sq. ft	Yes
8	Living Room	13'5" x 12'3"	164 sq. ft	Yes
9	Dining Area	13'5" x 15'3"	170 sq. ft	Yes
10	Family Room	13'10" x 13'6"	187 sq. ft	Yes
11	Hall	4'0" x 5'7"	22 sq. ft	Yes

**430 Mountain Avenue Southwest, Old Southwest,
Roanoke, Roanoke city, Virginia, United States, 24016**



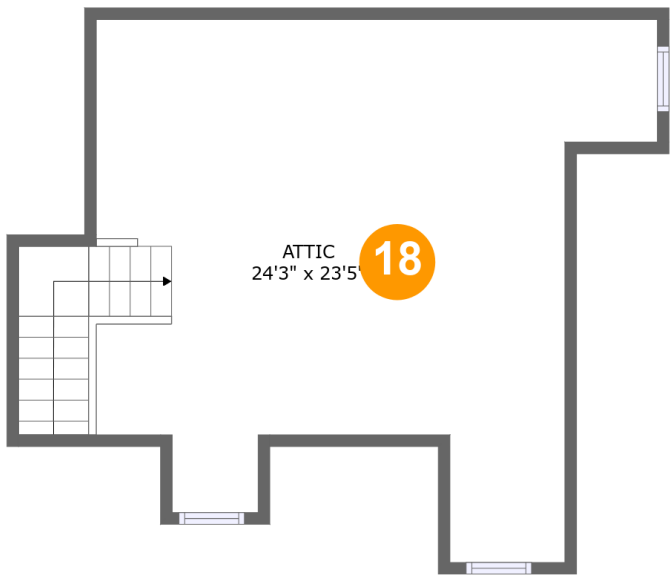
Room dimensions

Floor 2

Total sqft: 783 Living area: 783

#		Dimensions	sqft	Counted as living area
12	Bedroom	11'2" x 12'0"	117 sq. ft	Yes
13	Hall	8'11" x 7'1"	89 sq. ft	Yes
14	Primary Bedroom	13'5" x 13'1"	161 sq. ft	Yes
15	Bedroom	9'9" x 12'10"	116 sq. ft	Yes
16	Primary Bath	13'10" x 8'2"	95 sq. ft	Yes
17	Bath	7'3" x 9'6"	61 sq. ft	Yes

430 Mountain Avenue Southwest, Old Southwest,
Roanoke, Roanoke city, Virginia, United States, 24016



Room dimensions

Floor 3 Total sqft: 506 Living area: 0

#		Dimensions	sqft	Counted as living area
18	Attic	24'3" x 23'5"	303 sq. ft	No

430 Mountain Avenue Southwest, Old Southwest,
Roanoke, Roanoke city, Virginia, United States, 24016

1 Floor 1 - Patio



Dimensions: 25'6" x 18'11"
Area: 648 sq. ft
Counted as living area: No

Heated: No
Finished: Yes
Enclosed: No
Contiguous: Yes
Permitted: Yes
Wet space: No
Addition: No
Conversion: No

2 Floor 1 - Utility



Dimensions: 5'3" x 9'9"
Area: 51 sq. ft
Counted as living area: Yes

Heated: Yes
Finished: Yes
Enclosed: Yes
Contiguous: Yes
Permitted: Yes
Wet space: No
Addition: No
Conversion: No

430 Mountain Avenue Southwest, Old Southwest, Roanoke, Roanoke city, Virginia, United States, 24016

3 Floor 1 - Porch



Dimensions: 23'5" x 8'1"
Area: 167 sq. ft
Counted as living area: No

Heated: No
Finished: Yes
Enclosed: No
Contiguous: Yes
Permitted: Yes
Wet space: No
Addition: No
Conversion: No

4 Floor 1 - Covered Deck



Dimensions: 6'9" x 4'3"
Area: 29 sq. ft
Counted as living area: No

Heated: No
Finished: Yes
Enclosed: No
Contiguous: Yes
Permitted: Yes
Wet space: No
Addition: No
Conversion: No

5 Floor 1 - Foyer



Dimensions: 10'6" x 11'6"
Area: 144 sq. ft
Counted as living area: Yes

Heated: Yes
Finished: Yes
Enclosed: Yes
Contiguous: Yes
Permitted: Yes
Wet space: No
Addition: No
Conversion: No

**430 Mountain Avenue Southwest, Old Southwest,
Roanoke, Roanoke city, Virginia, United States, 24016**

6 Floor 1 - WC



Dimensions: 2'2" x 5'7"
Area: 12 sq. ft
Counted as living area: Yes

Heated: Yes
Finished: Yes
Enclosed: Yes
Contiguous: Yes
Permitted: Yes
Wet space: Yes
Addition: No
Conversion: No

7 Floor 1 - Kitchen



Dimensions: 11'3" x 10'1"
Area: 114 sq. ft
Counted as living area: Yes

Heated: Yes
Finished: Yes
Enclosed: Yes
Contiguous: Yes
Permitted: Yes
Wet space: No
Addition: No
Conversion: No

8 Floor 1 - Living Room



Dimensions: 13'5" x 12'3"
Area: 164 sq. ft
Counted as living area: Yes

Heated: Yes
Finished: Yes
Enclosed: Yes
Contiguous: Yes
Permitted: Yes
Wet space: No
Addition: No
Conversion: No

430 Mountain Avenue Southwest, Old Southwest, Roanoke, Roanoke city, Virginia, United States, 24016

9 Floor 1 - Dining Area



Dimensions: 13'5" x 15'3"
Area: 170 sq. ft
Counted as living area: Yes

Heated: Yes
Finished: Yes
Enclosed: Yes
Contiguous: Yes
Permitted: Yes
Wet space: No
Addition: No
Conversion: No

10 Floor 1 - Family Room



Dimensions: 13'10" x 13'6"
Area: 187 sq. ft
Counted as living area: Yes

Heated: Yes
Finished: Yes
Enclosed: Yes
Contiguous: Yes
Permitted: Yes
Wet space: No
Addition: No
Conversion: No

11 Floor 1 - Hall

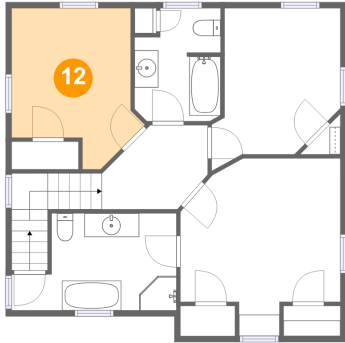


Dimensions: 4'0" x 5'7"
Area: 22 sq. ft
Counted as living area: Yes

Heated: Yes
Finished: Yes
Enclosed: Yes
Contiguous: Yes
Permitted: Yes
Wet space: No
Addition: No
Conversion: No

**430 Mountain Avenue Southwest, Old Southwest,
Roanoke, Roanoke city, Virginia, United States, 24016**

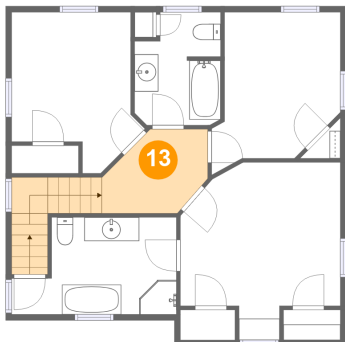
12 Floor 2 - Bedroom



Dimensions: 11'2" x 12'0"
Area: 117 sq. ft
Counted as living area: Yes

Heated: Yes
Finished: Yes
Enclosed: Yes
Contiguous: Yes
Permitted: Yes
Wet space: No
Addition: No
Conversion: No

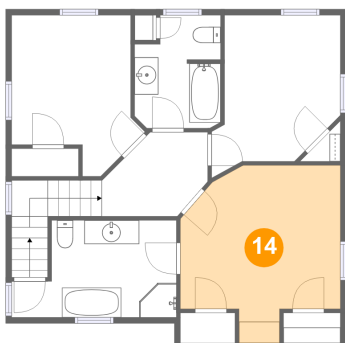
13 Floor 2 - Hall



Dimensions: 8'11" x 7'1"
Area: 89 sq. ft
Counted as living area: Yes

Heated: Yes
Finished: Yes
Enclosed: Yes
Contiguous: Yes
Permitted: Yes
Wet space: No
Addition: No
Conversion: No

14 Floor 2 - Primary Bedroom

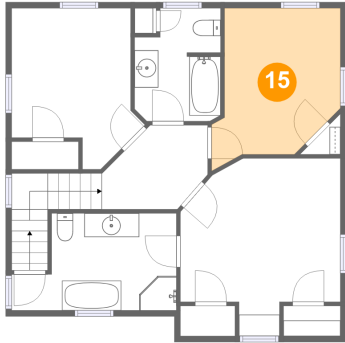


Dimensions: 13'5" x 13'1"
Area: 161 sq. ft
Counted as living area: Yes

Heated: Yes
Finished: Yes
Enclosed: Yes
Contiguous: Yes
Permitted: Yes
Wet space: No
Addition: No
Conversion: No

**430 Mountain Avenue Southwest, Old Southwest,
Roanoke, Roanoke city, Virginia, United States, 24016**

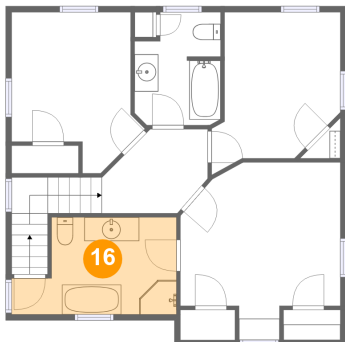
15 Floor 2 - Bedroom



Dimensions: 9'9" x 12'10"
Area: 116 sq. ft
Counted as living area: Yes

Heated: Yes
Finished: Yes
Enclosed: Yes
Contiguous: Yes
Permitted: Yes
Wet space: No
Addition: No
Conversion: No

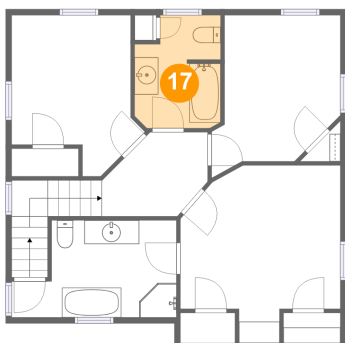
16 Floor 2 - Primary Bath



Dimensions: 13'10" x 8'2"
Area: 95 sq. ft
Counted as living area: Yes

Heated: Yes
Finished: Yes
Enclosed: Yes
Contiguous: Yes
Permitted: Yes
Wet space: Yes
Addition: No
Conversion: No

17 Floor 2 - Bath

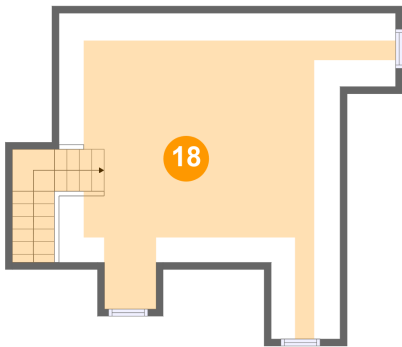


Dimensions: 7'3" x 9'6"
Area: 61 sq. ft
Counted as living area: Yes

Heated: Yes
Finished: Yes
Enclosed: Yes
Contiguous: Yes
Permitted: Yes
Wet space: Yes
Addition: No
Conversion: No

430 Mountain Avenue Southwest, Old Southwest,
Roanoke, Roanoke city, Virginia, United States, 24016

18 Floor 3 - Attic



Dimensions: 24'3" x 23'5"
Area: 303 sq. ft
Counted as living area: No

Heated: No
Finished: No
Enclosed: Yes
Contiguous: Yes
Permitted: Yes
Wet space: No
Addition: No
Conversion: No