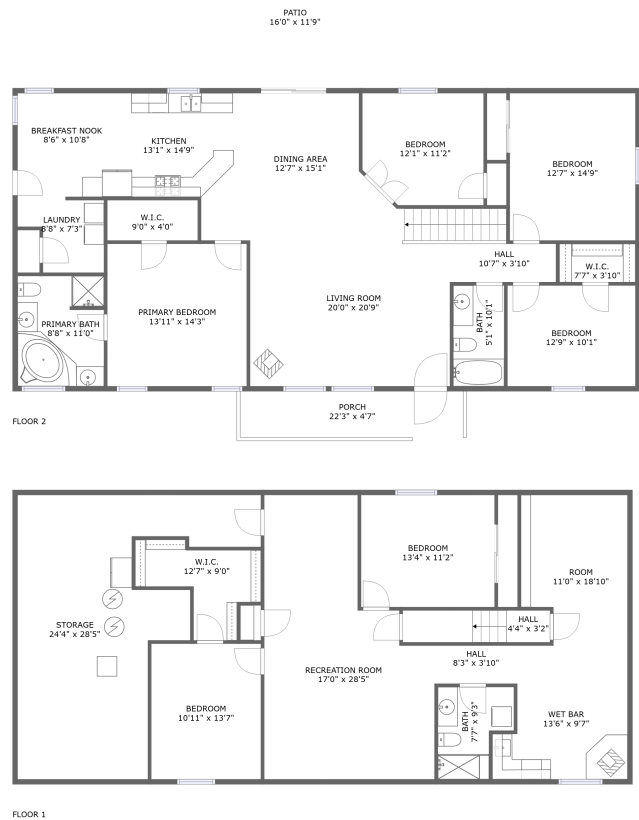




Home report


37506 County Road 69, Briggsdale, Weld County, Colorado,
United States, 80611




Property summary

 **0** Garages

 **6** Bedrooms

 **3** Bathrooms

 **0** Half baths

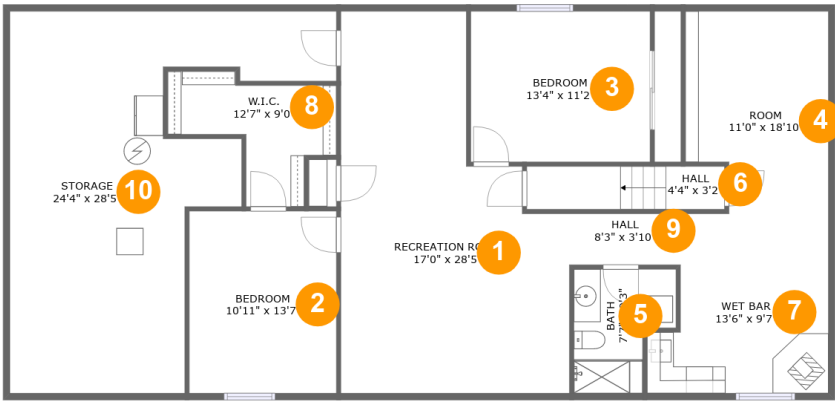
 **2** Floors

 **3,253** Gross living area sqft

 **4,016** Total sqft

Home report

37506 County Road 69, Briggsdale, Weld County, Colorado,
United States, 80611



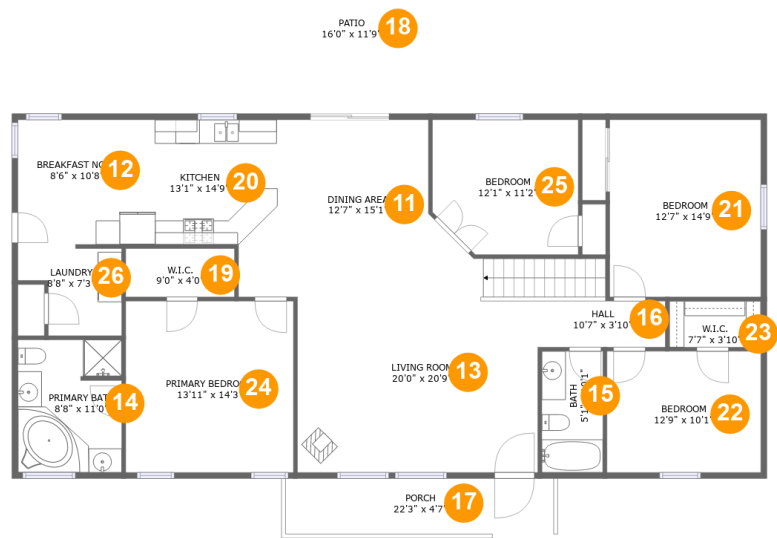
Room dimensions

Floor 1 Total sqft: 1823 Living area: 1352

#		Dimensions	sqft	Counted as living area
1	Recreation Room	17'0" x 28'5"	383 sq. ft	Yes
2	Bedroom	10'11" x 13'7"	148 sq. ft	Yes
3	Bedroom	13'4" x 11'2"	150 sq. ft	Yes
4	Room	11'0" x 18'10"	190 sq. ft	Yes
5	Bath	7'7" x 9'3"	58 sq. ft	Yes
6	Hall	4'4" x 3'2"	47 sq. ft	Yes
7	Wet Bar	13'6" x 9'7"	117 sq. ft	Yes
8	W.I.C.	12'7" x 9'0"	78 sq. ft	Yes
9	Hall	8'3" x 3'10"	31 sq. ft	Yes
10	Storage	24'4" x 28'5"	437 sq. ft	No

Home report

37506 County Road 69, Briggsdale, Weld County, Colorado,
United States, 80611



Room dimensions

Floor 2 Total sqft: 2193 Living area: 1901

#		Dimensions	sqft	Counted as living area
11	Dining Area	12'7" x 15'1"	189 sq. ft	Yes
12	Breakfast Nook	8'6" x 10'8"	89 sq. ft	Yes
13	Living Room	20'0" x 20'9"	343 sq. ft	Yes
14	Primary Bath	8'8" x 11'0"	94 sq. ft	Yes
15	Bath	5'1" x 10'1"	51 sq. ft	Yes
16	Hall	10'7" x 3'10"	41 sq. ft	Yes
17	Porch	22'3" x 4'7"	103 sq. ft	No
18	Patio	16'0" x 11'9"	189 sq. ft	No
19	W.I.C.	9'0" x 4'0"	36 sq. ft	Yes
20	Kitchen	13'1" x 14'9"	150 sq. ft	Yes
21	Bedroom	12'7" x 14'9"	185 sq. ft	Yes

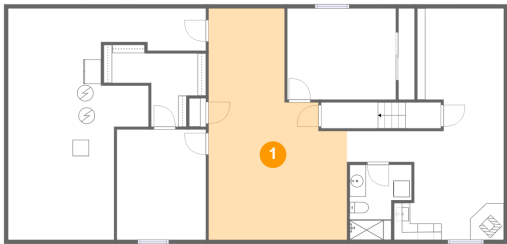
Home report

**37506 County Road 69, Briggsdale, Weld County, Colorado,
United States, 80611**

#		Dimensions	sqft	Counted as living area
22	Bedroom	12'9" x 10'1"	129 sq. ft	Yes
23	W.I.C.	7'7" x 3'10"	29 sq. ft	Yes
24	Primary Bedroom	13'11" x 14'3"	198 sq. ft	Yes
25	Bedroom	12'1" x 11'2"	129 sq. ft	Yes
26	Laundry	8'8" x 7'3"	51 sq. ft	Yes

37506 County Road 69, Briggsdale, Weld County, Colorado,
United States, 80611

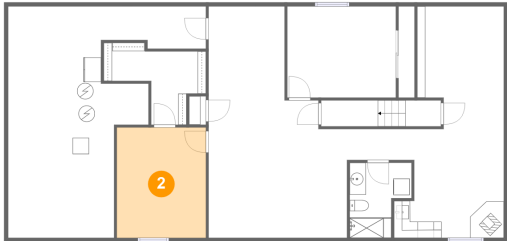
1 Floor 1 - Recreation Room



Dimensions: 17'0" x 28'5"
Area: 383 sq. ft
Counted as living area: Yes

Heated: Yes
Finished: Yes
Enclosed: Yes
Contiguous: Yes
Permitted: Yes
Wet space: No
Addition: No
Conversion: No

2 Floor 1 - Bedroom



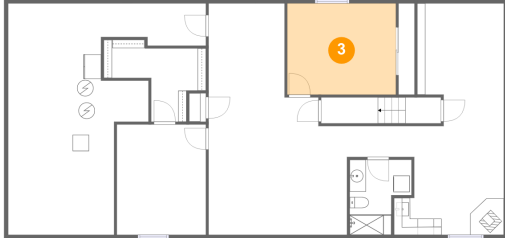
Dimensions: 10'11" x 13'7"
Area: 148 sq. ft
Counted as living area: Yes

Heated: Yes
Finished: Yes
Enclosed: Yes
Contiguous: Yes
Permitted: Yes
Wet space: No
Addition: No
Conversion: No

Home report

37506 County Road 69, Briggsdale, Weld County, Colorado,
United States, 80611

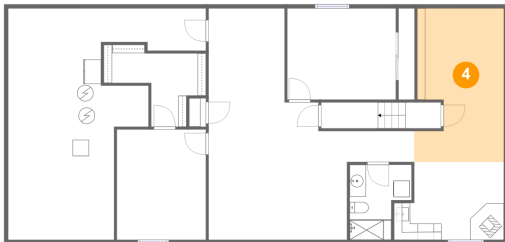
3 Floor 1 - Bedroom



Dimensions: 13'4" x 11'2"
Area: 150 sq. ft
Counted as living area: Yes

Heated: Yes
Finished: Yes
Enclosed: Yes
Contiguous: Yes
Permitted: Yes
Wet space: No
Addition: No
Conversion: No

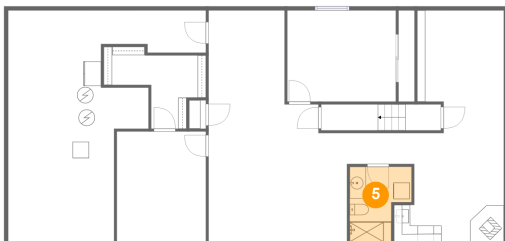
4 Floor 1 - Room



Dimensions: 11'0" x 18'10"
Area: 190 sq. ft
Counted as living area: Yes

Heated: Yes
Finished: Yes
Enclosed: Yes
Contiguous: Yes
Permitted: Yes
Wet space: No
Addition: No
Conversion: No

5 Floor 1 - Bath

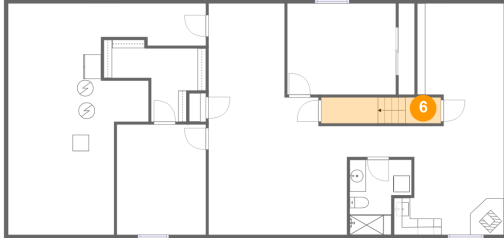


Dimensions: 7'7" x 9'3"
Area: 58 sq. ft
Counted as living area: Yes

Heated: Yes
Finished: Yes
Enclosed: Yes
Contiguous: Yes
Permitted: Yes
Wet space: Yes
Addition: No
Conversion: No

37506 County Road 69, Briggsdale, Weld County, Colorado,
United States, 80611

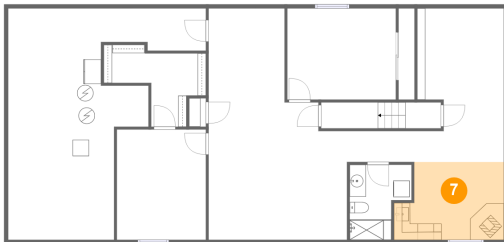
6 Floor 1 - Hall



Dimensions: 4'4" x 3'2"
Area: 47 sq. ft
Counted as living area: Yes

Heated: Yes
Finished: Yes
Enclosed: Yes
Contiguous: Yes
Permitted: Yes
Wet space: No
Addition: No
Conversion: No

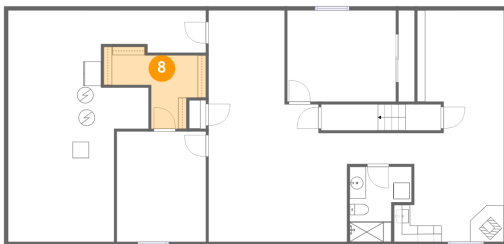
7 Floor 1 - Wet Bar



Dimensions: 13'6" x 9'7"
Area: 117 sq. ft
Counted as living area: Yes

Heated: Yes
Finished: Yes
Enclosed: Yes
Contiguous: Yes
Permitted: Yes
Wet space: No
Addition: No
Conversion: No

8 Floor 1 - W.I.C.



Dimensions: 12'7" x 9'0"
Area: 78 sq. ft
Counted as living area: Yes

Heated: Yes
Finished: Yes
Enclosed: Yes
Contiguous: Yes
Permitted: Yes
Wet space: No
Addition: No
Conversion: No

Home report

37506 County Road 69, Briggsdale, Weld County, Colorado,
United States, 80611

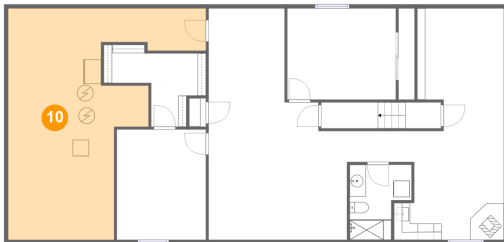
9 Floor 1 - Hall



Dimensions: 8'3" x 3'10"
Area: 31 sq. ft
Counted as living area: Yes

Heated: Yes
Finished: Yes
Enclosed: Yes
Contiguous: Yes
Permitted: Yes
Wet space: No
Addition: No
Conversion: No

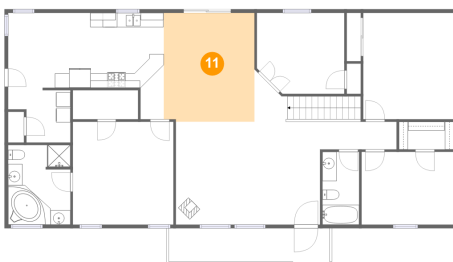
10 Floor 1 - Storage



Dimensions: 24'4" x 28'5"
Area: 437 sq. ft
Counted as living area: No

Heated: No
Finished: No
Enclosed: No
Contiguous: Yes
Permitted: Yes
Wet space: No
Addition: No
Conversion: No

11 Floor 2 - Dining Area



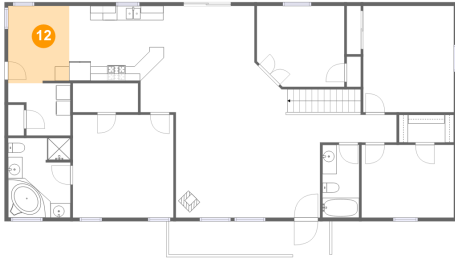
Dimensions: 12'7" x 15'1"
Area: 189 sq. ft
Counted as living area: Yes

Heated: Yes
Finished: Yes
Enclosed: Yes
Contiguous: Yes
Permitted: Yes
Wet space: No
Addition: No
Conversion: No

Home report

37506 County Road 69, Briggsdale, Weld County, Colorado,
United States, 80611

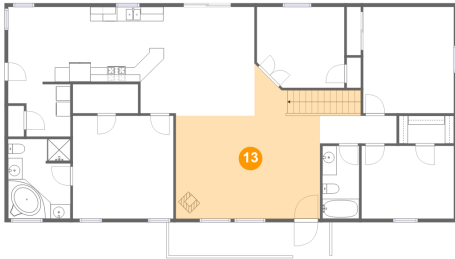
12 Floor 2 - Breakfast Nook



Dimensions: 8'6" x 10'8"
Area: 89 sq. ft
Counted as living area: Yes

Heated: Yes
Finished: Yes
Enclosed: Yes
Contiguous: Yes
Permitted: Yes
Wet space: No
Addition: No
Conversion: No

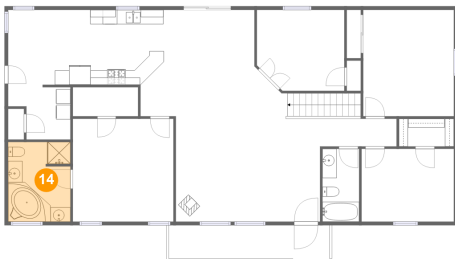
13 Floor 2 - Living Room



Dimensions: 20'0" x 20'9"
Area: 343 sq. ft
Counted as living area: Yes

Heated: Yes
Finished: Yes
Enclosed: Yes
Contiguous: Yes
Permitted: Yes
Wet space: No
Addition: No
Conversion: No

14 Floor 2 - Primary Bath



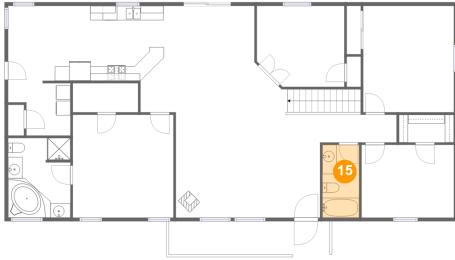
Dimensions: 8'8" x 11'0"
Area: 94 sq. ft
Counted as living area: Yes

Heated: Yes
Finished: Yes
Enclosed: Yes
Contiguous: Yes
Permitted: Yes
Wet space: Yes
Addition: No
Conversion: No

Home report

37506 County Road 69, Briggsdale, Weld County, Colorado,
United States, 80611

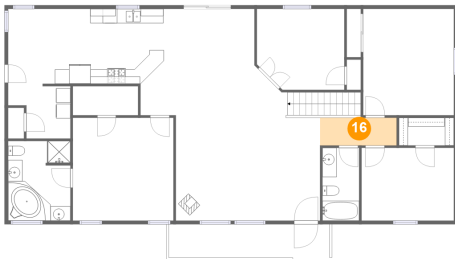
15 Floor 2 - Bath



Dimensions: 5'1" x 10'1"
Area: 51 sq. ft
Counted as living area: Yes

Heated: Yes
Finished: Yes
Enclosed: Yes
Contiguous: Yes
Permitted: Yes
Wet space: Yes
Addition: No
Conversion: No

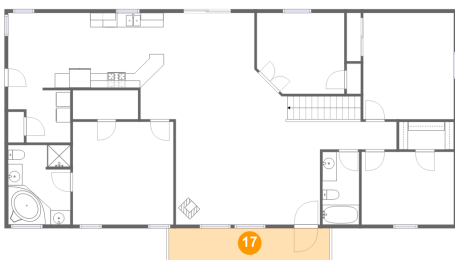
16 Floor 2 - Hall



Dimensions: 10'7" x 3'10"
Area: 41 sq. ft
Counted as living area: Yes

Heated: Yes
Finished: Yes
Enclosed: Yes
Contiguous: Yes
Permitted: Yes
Wet space: No
Addition: No
Conversion: No

17 Floor 2 - Porch



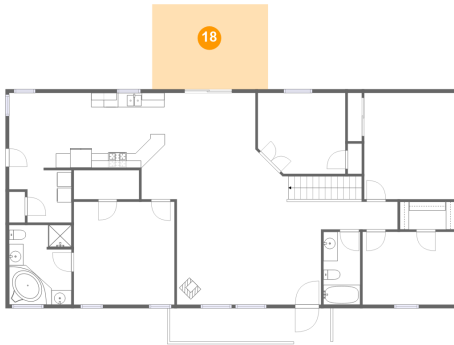
Dimensions: 22'3" x 4'7"
Area: 103 sq. ft
Counted as living area: No

Heated: No
Finished: Yes
Enclosed: No
Contiguous: Yes
Permitted: Yes
Wet space: No
Addition: No
Conversion: No

Home report

37506 County Road 69, Briggsdale, Weld County, Colorado,
United States, 80611

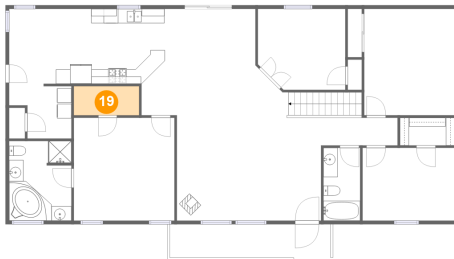
18 Floor 2 - Patio



Dimensions: 16'0" x 11'9"
Area: 189 sq. ft
Counted as living area: No

Heated: No
Finished: Yes
Enclosed: No
Contiguous: Yes
Permitted: Yes
Wet space: No
Addition: No
Conversion: No

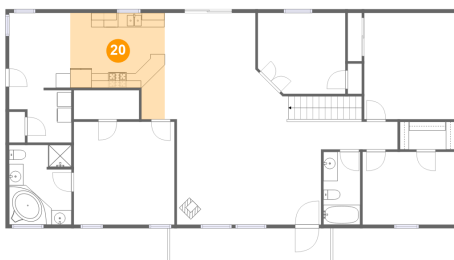
19 Floor 2 - W.I.C.



Dimensions: 9'0" x 4'0"
Area: 36 sq. ft
Counted as living area: Yes

Heated: Yes
Finished: Yes
Enclosed: Yes
Contiguous: Yes
Permitted: Yes
Wet space: No
Addition: No
Conversion: No

20 Floor 2 - Kitchen



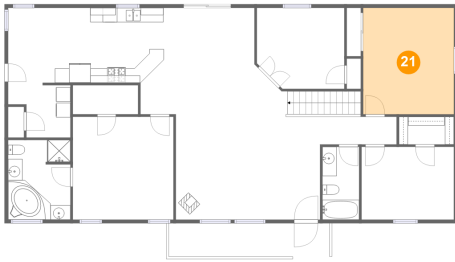
Dimensions: 13'1" x 14'9"
Area: 150 sq. ft
Counted as living area: Yes

Heated: Yes
Finished: Yes
Enclosed: Yes
Contiguous: Yes
Permitted: Yes
Wet space: No
Addition: No
Conversion: No

Home report

37506 County Road 69, Briggsdale, Weld County, Colorado,
United States, 80611

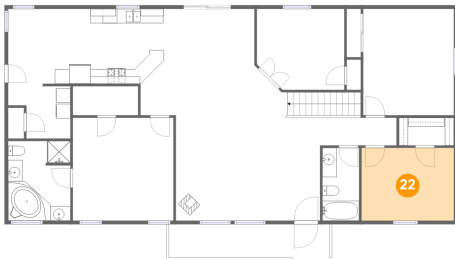
21 Floor 2 - Bedroom



Dimensions: 12'7" x 14'9"
Area: 185 sq. ft
Counted as living area: Yes

Heated: Yes
Finished: Yes
Enclosed: Yes
Contiguous: Yes
Permitted: Yes
Wet space: No
Addition: No
Conversion: No

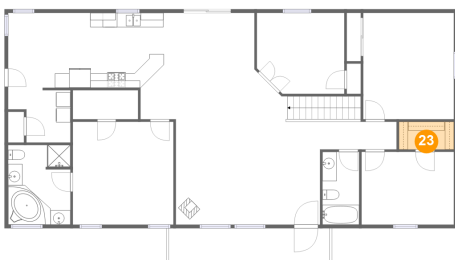
22 Floor 2 - Bedroom



Dimensions: 12'9" x 10'1"
Area: 129 sq. ft
Counted as living area: Yes

Heated: Yes
Finished: Yes
Enclosed: Yes
Contiguous: Yes
Permitted: Yes
Wet space: No
Addition: No
Conversion: No

23 Floor 2 - W.I.C.



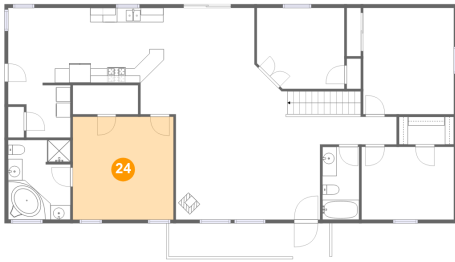
Dimensions: 7'7" x 3'10"
Area: 29 sq. ft
Counted as living area: Yes

Heated: Yes
Finished: Yes
Enclosed: Yes
Contiguous: Yes
Permitted: Yes
Wet space: No
Addition: No
Conversion: No

Home report

37506 County Road 69, Briggsdale, Weld County, Colorado,
United States, 80611

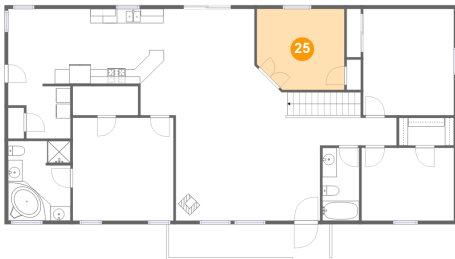
24 Floor 2 - Primary Bedroom



Dimensions: 13'11" x 14'3"
Area: 198 sq. ft
Counted as living area: Yes

Heated: Yes
Finished: Yes
Enclosed: Yes
Contiguous: Yes
Permitted: Yes
Wet space: No
Addition: No
Conversion: No

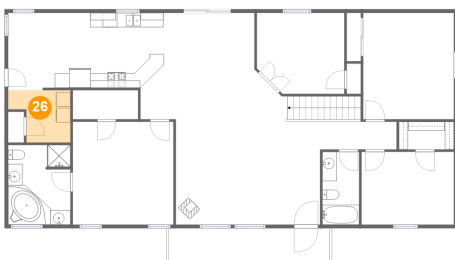
25 Floor 2 - Bedroom



Dimensions: 12'1" x 11'2"
Area: 129 sq. ft
Counted as living area: Yes

Heated: Yes
Finished: Yes
Enclosed: Yes
Contiguous: Yes
Permitted: Yes
Wet space: No
Addition: No
Conversion: No

26 Floor 2 - Laundry



Dimensions: 8'8" x 7'3"
Area: 51 sq. ft
Counted as living area: Yes

Heated: Yes
Finished: Yes
Enclosed: Yes
Contiguous: Yes
Permitted: Yes
Wet space: No
Addition: No
Conversion: No