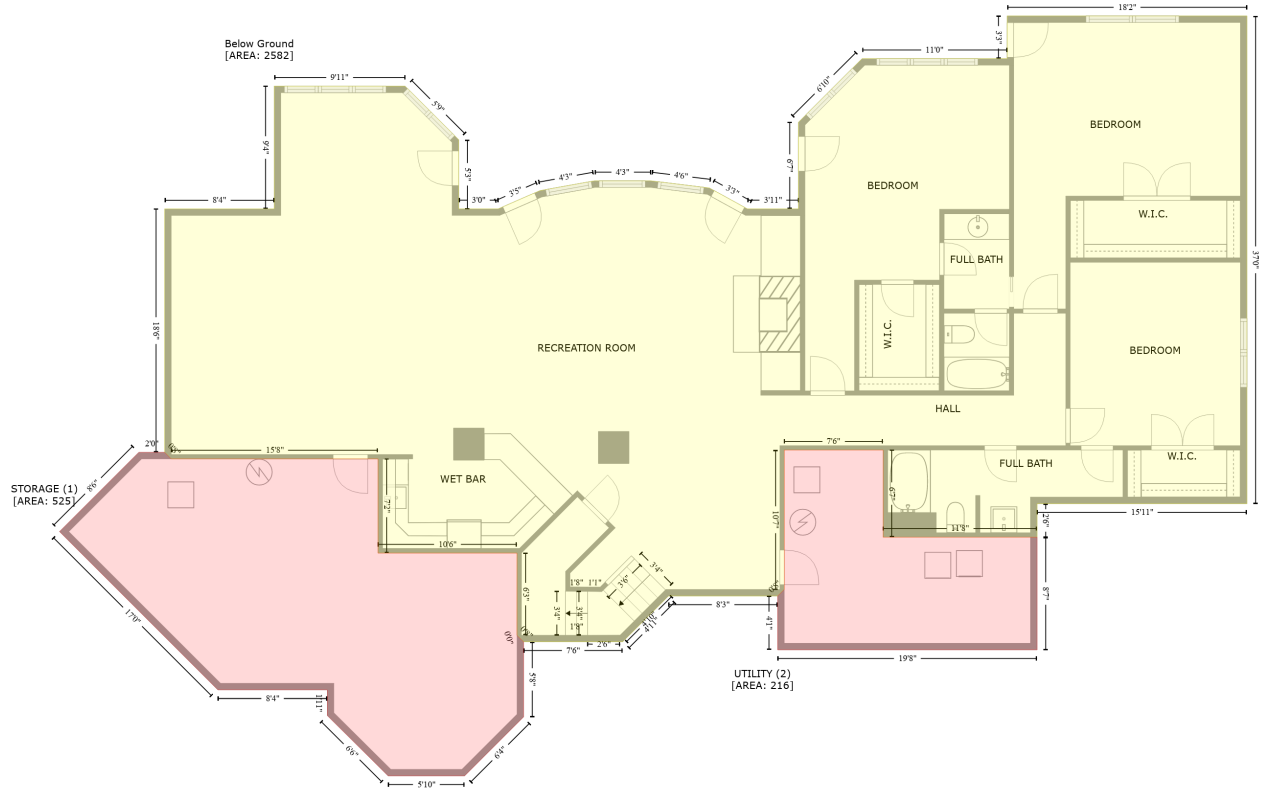


Mahomet, Champaign County, Illinois, United States, 61853

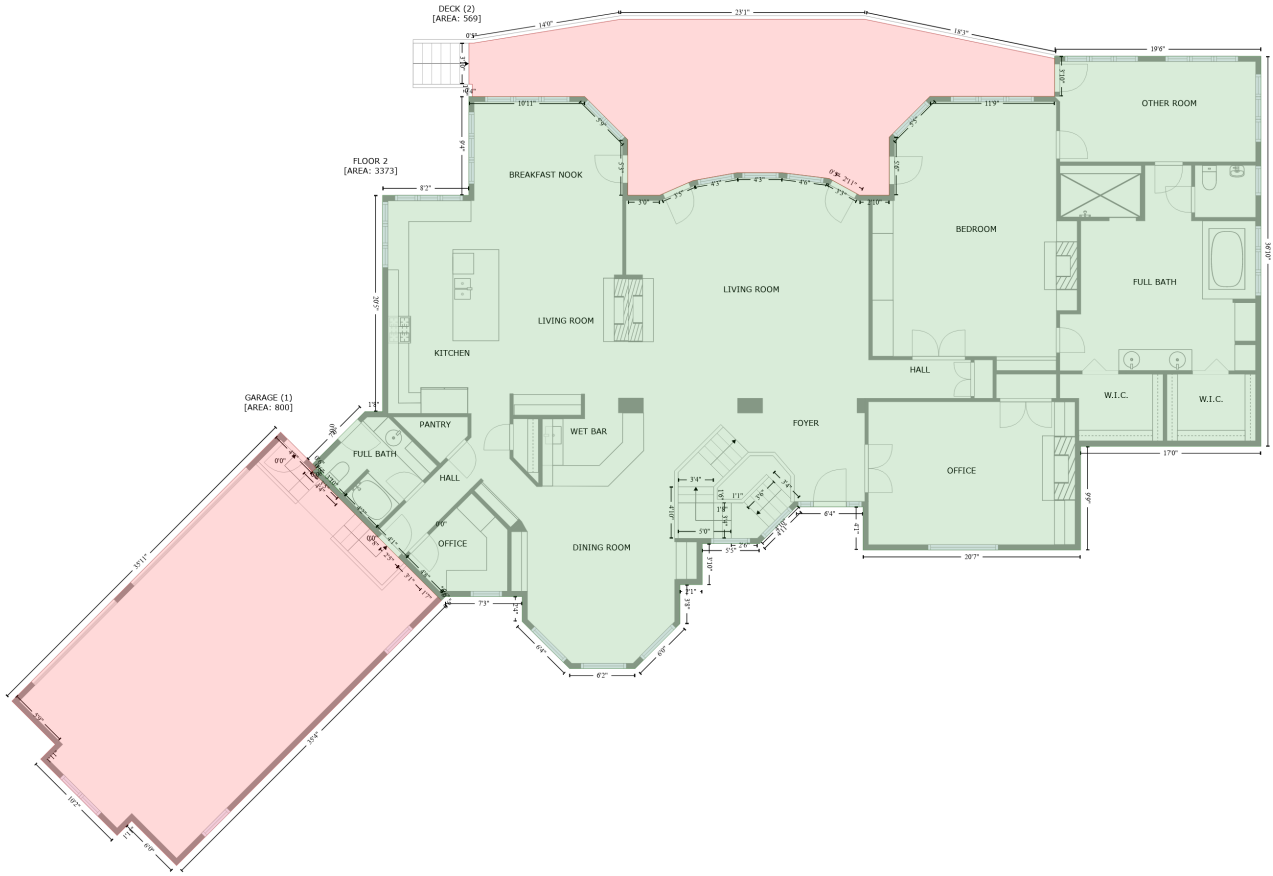
Gross Living Area: 3373 sq. ft



Space	Area (sq. ft)	Calculation
Below Ground (Living area)	2582	Coordinate Polygon Area Algorithm using inches $-((1408.2 + 1408.2) * (39.7 - 484) + (1408.2 + 1217.1) * (484 - 484) + (1217.1 + 1217.1) * (484 - 514.4) + (1217.1 + 1076.9) * (514.4 - 514.4) + (1076.9 + 1076.9) * (514.4 - 435.1) + (1076.9 + 987) * (435.1 - 435.1) + (987 + 987) * (435.1 - 562) + (987 + 981) * (562 - 568) + (981 + 881.6) * (568 - 568) + (881.6 + 839.9) * (568 - 609.7) + (839.9 + 749.7) * (609.7 - 609.7) + (749.7 + 743.7) * (609.7 - 603.7) + (743.7 + 743.6) * (603.7 - 603.7) + (743.6 + 743.6) * (603.7 - 528.9) + (743.6 + 617.2) * (528.9 - 528.9) + (617.2 + 617.2) * (528.9 - 443.2) + (617.2 + 429) * (443.2 - 443.2) + (429 + 423) * (443.2 - 437.2) + (423 + 423) * (437.2 - 215.5) + (423 + 522.7) * (215.5 - 215.5) + (522.7 + 522.7) * (215.5 - 103.7) + (522.7 + 641.8) * (103.7 - 103.7) + (641.8 + 690.6) * (103.7 - 152.5) + (690.6 + 690.6) * (152.5 - 215.4) + (690.6 + 726.6) * (215.4 - 215.4) + (726.6 + 764.5) * (215.4 - 198.9) + (764.5 + 814.3) * (198.9 - 189.9) + (814.3 + 865.5) * (189.9 - 189.9) + (865.5 + 918.8) * (189.9 - 196.5) + (918.8 + 953.3) * (196.5 - 215.4) + (953.3 + 999.8) * (215.4 - 215.4) + (999.8 + 999.8) * (215.4 - 136.6) + (999.8 + 1057.8) * (136.6 - 78.7) + (1057.8 + 1189.9) * (78.7 - 78.7) + (1189.9 + 1189.9) * (78.7 - 39.7) + (1189.9 + 1408.2) * (39.7 - 39.7)) * 0.5 * 0.00694$
STORAGE (Non-living area)	525	$-((423 + 429) * (437.2 - 443.2) + (429 + 617.2) * (443.2 - 443.2) + (617.2 + 617.2) * (443.2 - 528.9) + (617.2 + 743.6) * (528.9 - 528.9) + (743.6 + 743.6) * (528.9 - 603.7) + (743.6 + 743.7) * (603.7 - 603.9) + (743.7 + 749.7) * (603.9 - 609.7) + (749.7 + 749.7) * (609.7 - 678.1) + (749.7 + 696) * (678.1 - 731.9) + (696 + 626.4) * (731.9 - 731.9) + (626.4 + 571) * (731.9 - 676.8) + (571 + 571) * (676.8 - 653.5) + (571 + 471.4) * (653.5 - 653.5) + (471.4 + 327.2) * (653.5 - 509.4) + (327.2 + 399.4) * (509.4 - 437.2) + (399.4 + 423) * (437.2 - 437.2)) * 0.5 * 0.00694$
UTILITY (Non-living area)	216	$-((1076.9 + 1076.9) * (435.1 - 514.4) + (1076.9 + 1217.1) * (514.4 - 514.4) + (1217.1 + 1217.1) * (514.4 - 617) + (1217.1 + 981) * (617 - 617) + (981 + 981) * (617 - 568) + (981 + 987) * (568 - 562) + (987 + 987) * (562 - 435.1) + (987 + 1076.9) * (435.1 - 435.1)) * 0.5 * 0.00694$

Mahomet, Champaign County, Illinois, United States, 61853

Gross Living Area: 3373 sq. ft



Space	Area (sq. ft)	Calculation
FLOOR 2 (Living area)	3373	Coordinate Polygon Area Algorithm using inches $-((337.7 + 337.6) * (524 - 524) + (337.6 + 333.4) * (524 - 519.7) + (333.4 + 392.6) * (519.7 - 460.4) + (392.6 + 412.7) * (460.4 - 460.4) + (412.7 + 412.7) * (460.4 - 215.5) + (412.7 + 510.5) * (215.5 - 215.5) + (510.5 + 510.5) * (215.5 - 103.7) + (510.5 + 641.8) * (103.7 - 103.7) + (641.8 + 690.6) * (103.7 - 152.5) + (690.6 + 690.6) * (152.5 - 215.4) + (690.6 + 726.6) * (215.4 - 215.4) + (726.6 + 764.5) * (215.4 - 198.9) + (764.5 + 814.3) * (198.9 - 189.9) + (814.3 + 865.5) * (189.9 - 189.9) + (865.5 + 918.8) * (189.9 - 196.5) + (918.8 + 953.3) * (196.5 - 215.4) + (953.3 + 986.9) * (215.4 - 215.4) + (986.9 + 986.9) * (215.4 - 149.6) + (986.9 + 1032.9) * (149.6 - 103.5) + (1032.9 + 1174.2) * (103.5 - 103.5) + (1174.2 + 1174.2) * (103.5 - 58) + (1174.2 + 1408.2) * (58 - 58) + (1408.2 + 1408.2) * (58 - 499.7) + (1408.2 + 1203.7) * (499.7 - 499.7) + (1203.7 + 1203.7) * (499.7 - 617) + (1203.7 + 957.2) * (617 - 617) + (957.2 + 957.2) * (617 - 568.1) + (957.2 + 881.6) * (568.1 - 568.1) + (881.6 + 839.9) * (568.1 - 609.8) + (839.9 + 775) * (609.8 - 609.8) + (775 + 775) * (609.8 - 656.3) + (775 + 749.7) * (656.3 - 656.3) + (749.7 + 749.7) * (656.3 - 700.5) + (749.7 + 698.9) * (700.5 - 751.3) + (698.9 + 624.6) * (751.3 - 751.3) + (624.6 + 571) * (751.3 - 698.1) + (571 + 571) * (698.1 - 669.8) + (571 + 483.9) * (669.8 - 669.8) + (483.9 + 479.4) * (669.8 - 674.3) + (479.4 + 475.2) * (674.3 - 670) + (475.2 + 475.2) * (670 - 669.9) + (475.2 + 435.4) * (669.9 - 630.3) + (435.4 + 401) * (630.3 - 595.9) + (401 + 401.2) * (595.9 - 595.9) + (401.2 + 365.6) * (595.9 - 560.4) + (365.6 + 333.4) * (560.4 - 528.3) + (333.4 + 337.6) * (528.3 - 524) + (337.6 + 366.8) * (524 - 553.2) + (366.8 + 366.9) * (553.2 - 553.5) + (366.9 + 337.7) * (553.5 - 524)) * 0.5 * 0.00694$

Mahomet, Champaign County, Illinois, United States, 61853

Gross Living Area: 3373 sq. ft

Space	Area (sq. ft)	Calculation <small>Coordinate Polygon Area Algorithm using inches</small>
GARAGE (Non-living area)	800	$-\left((297.2 + 337.6) * (483.6 - 524) + (337.6 + 333.4) * (524 - 528.3) + (333.4 + 329.1) * (528.3 - 524) + (329.1 + 328.9) * (524 - 524) + (328.9 + 365.6) * (524 - 560.4) + (365.6 + 401.1) * (560.4 - 595.9) + (401.1 + 401) * (595.9 - 595.9) + (401 + 415) * (595.9 - 609.8) + (415 + 435.4) * (609.8 - 630.3) + (435.4 + 461.4) * (630.3 - 656.3) + (461.4 + 475.2) * (656.3 - 670) + (475.2 + 479.4) * (670 - 674.3) + (479.4 + 179.3) * (674.3 - 974.4) + (179.3 + 128.5) * (974.4 - 923.7) + (128.5 + 111.9) * (923.7 - 940.3) + (111.9 + 25.2) * (940.3 - 853.8) + (25.2 + 41.8) * (853.8 - 837.2) + (41.8 + -7.4) * (837.2 - 788.1) + (-7.4 + 297.2) * (788.1 - 483.6)\right) * 0.5 * 0.00694$
DECK (Non-living area)	569	$-\left((959.3 + 1174.2) * (16.2 - 60.6) + (1174.2 + 1174.2) * (60.6 - 103.5) + (1174.2 + 1032.9) * (103.5 - 103.5) + (1032.9 + 986.9) * (103.5 - 149.6) + (986.9 + 986.9) * (149.6 - 215.4) + (986.9 + 953.3) * (215.4 - 215.4) + (953.3 + 923) * (215.4 - 198.9) + (923 + 918.8) * (198.9 - 196.5) + (918.8 + 865.5) * (196.5 - 189.9) + (865.5 + 814.3) * (189.9 - 189.9) + (814.3 + 764.5) * (189.9 - 198.9) + (764.5 + 726.6) * (198.9 - 215.4) + (726.6 + 690.6) * (215.4 - 215.4) + (690.6 + 690.6) * (215.4 - 152.5) + (690.6 + 641.8) * (152.5 - 103.7) + (641.8 + 514.5) * (103.7 - 103.7) + (514.5 + 514.5) * (103.7 - 89.7) + (514.5 + 510.8) * (89.7 - 89.5) + (510.8 + 510.8) * (89.5 - 43.1) + (510.8 + 516.1) * (43.1 - 43.1) + (516.1 + 682) * (43.1 - 16.2) + (682 + 959.3) * (16.2 - 16.2)\right) * 0.5 * 0.00694$