


225 Sconset Drive, Penhook, Franklin County, Virginia, United States, 24137



Property summary


 **0** Garages

 **6** Bedrooms

 **3** Bathrooms

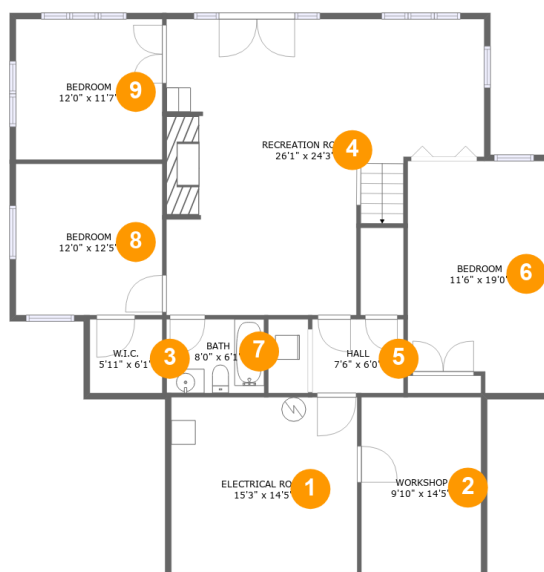
 **1** Half baths

 **3** Floors

 **3,698** Gross living area sqft

 **4,468** Total sqft

225 Sconset Drive, Penhook, Franklin County, Virginia, United States, 24137



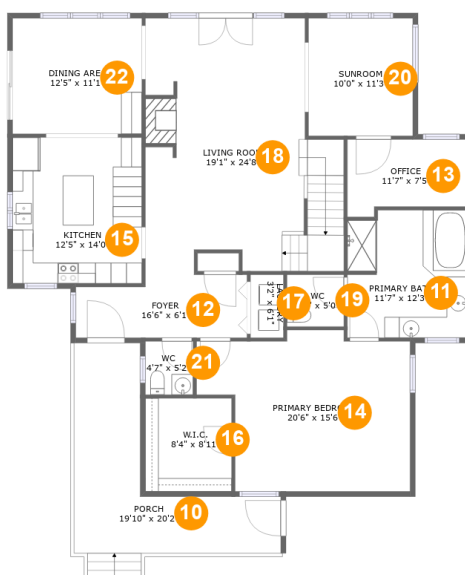
Room dimensions

Floor 1

Total sqft: 1709 Living area: 1314

#		Dimensions	sqft	Counted as living area
1	Room	15'3" x 14'5"	220 sq. ft	No
2	Recreation Room	9'10" x 14'5"	142 sq. ft	No
3	Cl	5'11" x 6'1"	36 sq. ft	Yes
4	Recreation Room	26'1" x 24'3"	517 sq. ft	Yes
5	Hall	7'6" x 6'0"	46 sq. ft	Yes
6	Bedroom	11'6" x 19'0"	209 sq. ft	Yes
7	Bath	8'0" x 6'1"	49 sq. ft	Yes
8	Bedroom	12'0" x 12'5"	150 sq. ft	Yes
9	Bedroom	12'0" x 11'7"	139 sq. ft	Yes

225 Sconset Drive, Penhook, Franklin County, Virginia, United States, 24137



Room dimensions

Floor 2

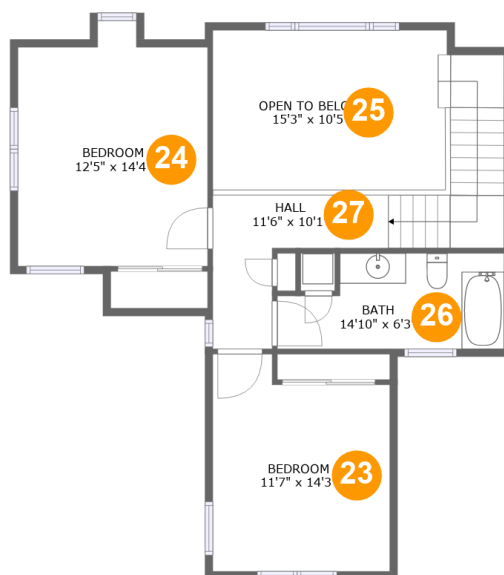
Total sqft: 1921 Living area: 1719

#		Dimensions	sqft	Counted as living area
10	Outdoor	19'10" x 20'2"	202 sq. ft	No
11	Bath	11'7" x 12'3"	138 sq. ft	Yes
12	Entry	16'6" x 6'1"	92 sq. ft	Yes
13	Office	11'7" x 7'5"	77 sq. ft	Yes
14	Bedroom	20'6" x 15'6"	268 sq. ft	Yes
15	Kitchen	12'5" x 14'0"	175 sq. ft	Yes
16	Cl	8'4" x 8'11"	74 sq. ft	Yes
17	Utility	3'2" x 6'1"	19 sq. ft	Yes
18	Living Room	19'1" x 24'8"	410 sq. ft	Yes
19	Bath	5'6" x 5'0"	27 sq. ft	Yes
20	Room	10'0" x 11'3"	114 sq. ft	Yes

**225 Sconset Drive, Penhook, Franklin County,
Virginia, United States, 24137**

#		Dimensions	sqft	Counted as living area
21	Bath	4'7" x 5'2"	24 sq. ft	Yes
22	Dining Room	12'5" x 11'1"	138 sq. ft	Yes

225 Sconset Drive, Penhook, Franklin County, Virginia, United States, 24137



Room dimensions

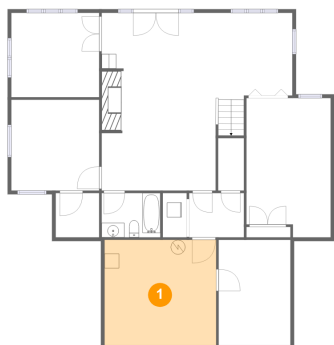
Floor 3

Total sqft: 838 Living area: 665

#		Dimensions	sqft	Counted as living area
23	Bedroom	11'7" x 14'3"	150 sq. ft	Yes
24	Bedroom	12'5" x 14'4"	178 sq. ft	Yes
25	Open To Below	15'3" x 10'5"	158 sq. ft	No
26	Bath	14'10" x 6'3"	82 sq. ft	Yes
27	Hall	11'6" x 10'1"	134 sq. ft	Yes

225 Sconset Drive, Penhook, Franklin County, Virginia, United States, 24137

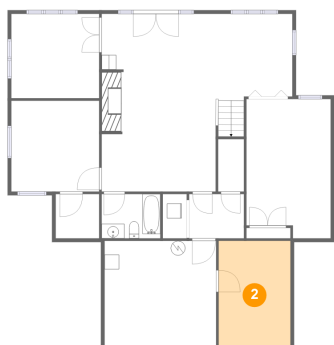
1 Floor 1 - Room



Dimensions: 15'3" x 14'5"
Area: 220 sq. ft
Counted as living area: No

Heated: No
Finished: No
Enclosed: Yes
Contiguous: Yes
Permitted: Yes
Wet space: No
Addition: No
Conversion: No

2 Floor 1 - Recreation Room

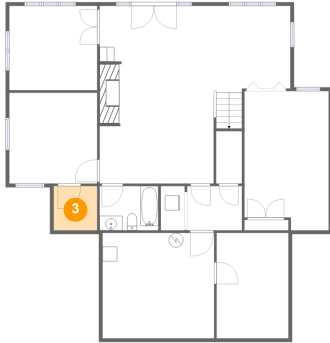


Dimensions: 9'10" x 14'5"
Area: 142 sq. ft
Counted as living area: No

Heated: No
Finished: No
Enclosed: Yes
Contiguous: No
Permitted: Yes
Wet space: No
Addition: No
Conversion: No

**225 Sconset Drive, Penhook, Franklin County,
Virginia, United States, 24137**

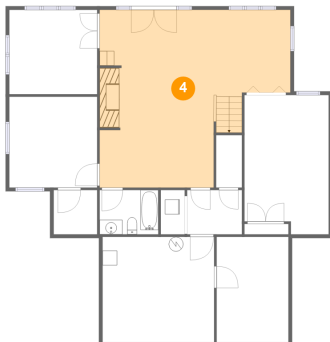
3 Floor 1 - Cl



Dimensions: 5'11" x 6'1"
Area: 36 sq. ft
Counted as living area: Yes

Heated: Yes
Finished: Yes
Enclosed: Yes
Contiguous: Yes
Permitted: Yes
Wet space: No
Addition: No
Conversion: No

4 Floor 1 - Recreation Room



Dimensions: 26'1" x 24'3"
Area: 517 sq. ft
Counted as living area: Yes

Heated: Yes
Finished: Yes
Enclosed: Yes
Contiguous: Yes
Permitted: Yes
Wet space: No
Addition: No
Conversion: No

5 Floor 1 - Hall

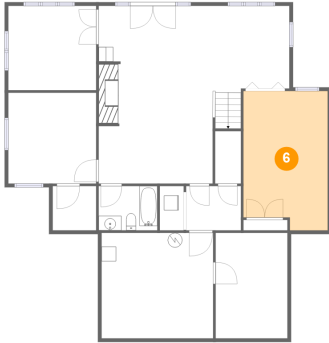


Dimensions: 7'6" x 6'0"
Area: 46 sq. ft
Counted as living area: Yes

Heated: Yes
Finished: Yes
Enclosed: Yes
Contiguous: Yes
Permitted: Yes
Wet space: No
Addition: No
Conversion: No

**225 Sconset Drive, Penhook, Franklin County,
Virginia, United States, 24137**

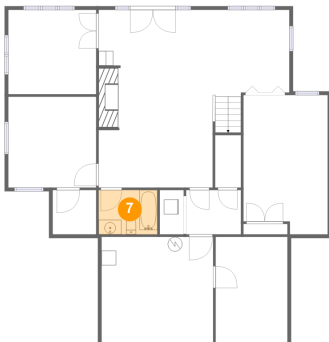
6 Floor 1 - Bedroom



Dimensions: 11'6" x 19'0"
Area: 209 sq. ft
Counted as living area: Yes

Heated: Yes
Finished: Yes
Enclosed: Yes
Contiguous: Yes
Permitted: Yes
Wet space: No
Addition: No
Conversion: No

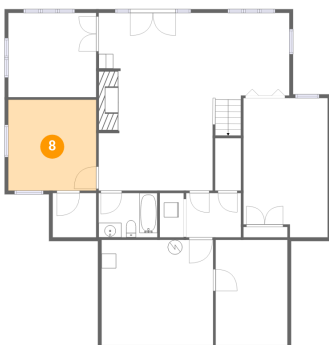
7 Floor 1 - Bath



Dimensions: 8'0" x 6'1"
Area: 49 sq. ft
Counted as living area: Yes

Heated: Yes
Finished: Yes
Enclosed: Yes
Contiguous: Yes
Permitted: Yes
Wet space: Yes
Addition: No
Conversion: No

8 Floor 1 - Bedroom

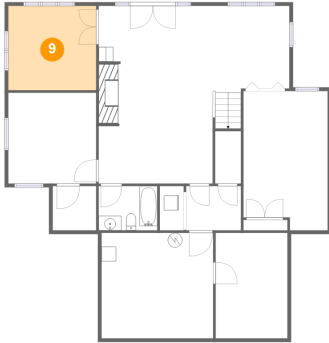


Dimensions: 12'0" x 12'5"
Area: 150 sq. ft
Counted as living area: Yes

Heated: Yes
Finished: Yes
Enclosed: Yes
Contiguous: Yes
Permitted: Yes
Wet space: No
Addition: No
Conversion: No

225 Sconset Drive, Penhook, Franklin County, Virginia, United States, 24137

9 Floor 1 - Bedroom



Dimensions: 12'0" x 11'7"
Area: 139 sq. ft
Counted as living area: Yes

Heated: Yes
Finished: Yes
Enclosed: Yes
Contiguous: Yes
Permitted: Yes
Wet space: No
Addition: No
Conversion: No

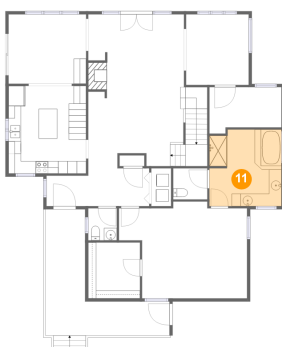
10 Floor 2 - Outdoor



Dimensions: 19'10" x 20'2"
Area: 202 sq. ft
Counted as living area: No

Heated: No
Finished: Yes
Enclosed: No
Contiguous: Yes
Permitted: Yes
Wet space: No
Addition: No
Conversion: No

11 Floor 2 - Bath

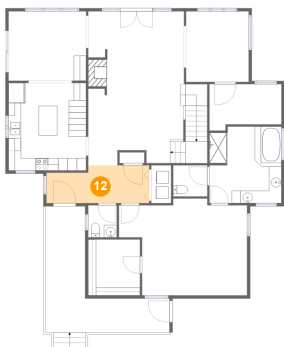


Dimensions: 11'7" x 12'3"
Area: 138 sq. ft
Counted as living area: Yes

Heated: Yes
Finished: Yes
Enclosed: Yes
Contiguous: Yes
Permitted: Yes
Wet space: Yes
Addition: No
Conversion: No

225 Sconset Drive, Penhook, Franklin County,
Virginia, United States, 24137

12 Floor 2 - Entry



Dimensions: 16'6" x 6'1"
Area: 92 sq. ft
Counted as living area: Yes

Heated: Yes
Finished: Yes
Enclosed: Yes
Contiguous: Yes
Permitted: Yes
Wet space: No
Addition: No
Conversion: No

13 Floor 2 - Office



Dimensions: 11'7" x 7'5"
Area: 77 sq. ft
Counted as living area: Yes

Heated: Yes
Finished: Yes
Enclosed: Yes
Contiguous: Yes
Permitted: Yes
Wet space: No
Addition: No
Conversion: No

14 Floor 2 - Bedroom

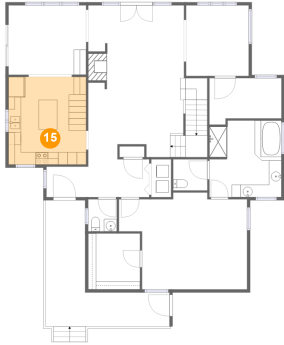


Dimensions: 20'6" x 15'6"
Area: 268 sq. ft
Counted as living area: Yes

Heated: Yes
Finished: Yes
Enclosed: Yes
Contiguous: Yes
Permitted: Yes
Wet space: No
Addition: No
Conversion: No

**225 Sconset Drive, Penhook, Franklin County,
Virginia, United States, 24137**

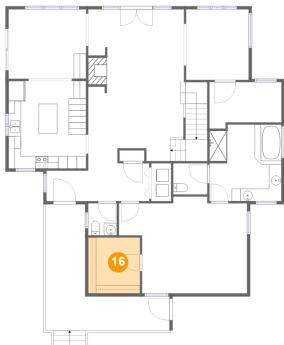
15 Floor 2 - Kitchen



Dimensions: 12'5" x 14'0"
Area: 175 sq. ft
Counted as living area: Yes

Heated: Yes
Finished: Yes
Enclosed: Yes
Contiguous: Yes
Permitted: Yes
Wet space: No
Addition: No
Conversion: No

16 Floor 2 - Cl



Dimensions: 8'4" x 8'11"
Area: 74 sq. ft
Counted as living area: Yes

Heated: Yes
Finished: Yes
Enclosed: Yes
Contiguous: Yes
Permitted: Yes
Wet space: No
Addition: No
Conversion: No

17 Floor 2 - Utility



Dimensions: 3'2" x 6'1"
Area: 19 sq. ft
Counted as living area: Yes

Heated: Yes
Finished: Yes
Enclosed: Yes
Contiguous: Yes
Permitted: Yes
Wet space: No
Addition: No
Conversion: No

**225 Sconset Drive, Penhook, Franklin County,
Virginia, United States, 24137**

18 Floor 2 - Living Room



Dimensions: 19'1" x 24'8"
Area: 410 sq. ft
Counted as living area: Yes

Heated: Yes
Finished: Yes
Enclosed: Yes
Contiguous: Yes
Permitted: Yes
Wet space: No
Addition: No
Conversion: No

19 Floor 2 - Bath



Dimensions: 5'6" x 5'0"
Area: 27 sq. ft
Counted as living area: Yes

Heated: Yes
Finished: Yes
Enclosed: Yes
Contiguous: Yes
Permitted: Yes
Wet space: Yes
Addition: No
Conversion: No

20 Floor 2 - Room

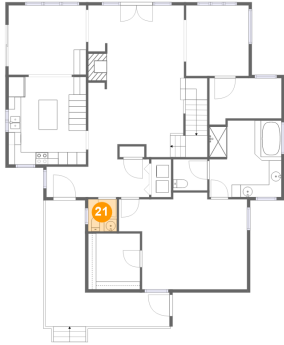


Dimensions: 10'0" x 11'3"
Area: 114 sq. ft
Counted as living area: Yes

Heated: Yes
Finished: Yes
Enclosed: Yes
Contiguous: Yes
Permitted: Yes
Wet space: No
Addition: No
Conversion: No

**225 Sconset Drive, Penhook, Franklin County,
Virginia, United States, 24137**

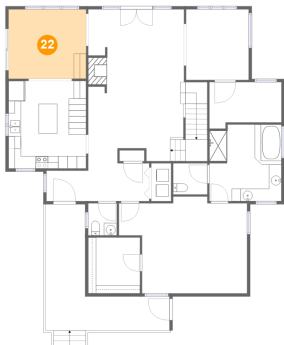
21 Floor 2 - Bath



Dimensions: 4'7" x 5'2"
Area: 24 sq. ft
Counted as living area: Yes

Heated: Yes
Finished: Yes
Enclosed: Yes
Contiguous: Yes
Permitted: Yes
Wet space: Yes
Addition: No
Conversion: No

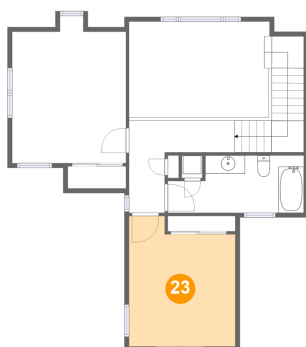
22 Floor 2 - Dining Room



Dimensions: 12'5" x 11'1"
Area: 138 sq. ft
Counted as living area: Yes

Heated: Yes
Finished: Yes
Enclosed: Yes
Contiguous: Yes
Permitted: Yes
Wet space: No
Addition: No
Conversion: No

23 Floor 3 - Bedroom

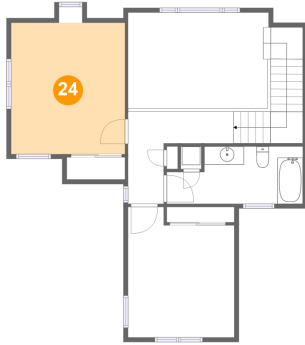


Dimensions: 11'7" x 14'3"
Area: 150 sq. ft
Counted as living area: Yes

Heated: Yes
Finished: Yes
Enclosed: Yes
Contiguous: Yes
Permitted: Yes
Wet space: No
Addition: No
Conversion: No

**225 Sconset Drive, Penhook, Franklin County,
Virginia, United States, 24137**

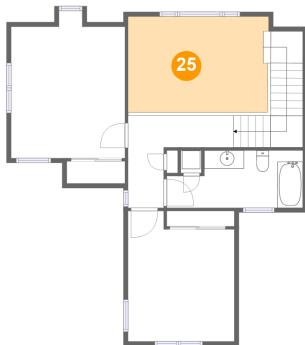
24 Floor 3 - Bedroom



Dimensions: 12'5" x 14'4"
Area: 178 sq. ft
Counted as living area: Yes

Heated: Yes
Finished: Yes
Enclosed: Yes
Contiguous: Yes
Permitted: Yes
Wet space: No
Addition: No
Conversion: No

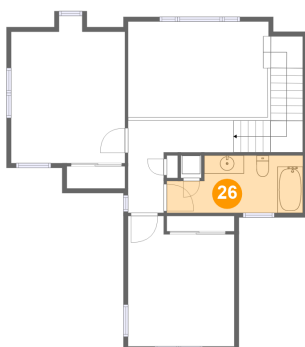
25 Floor 3 - Open To Below



Dimensions: 15'3" x 10'5"
Area: 158 sq. ft
Counted as living area: No

Heated: No
Finished: No
Enclosed: No
Contiguous: Yes
Permitted: No
Wet space: No
Addition: No
Conversion: No

26 Floor 3 - Bath

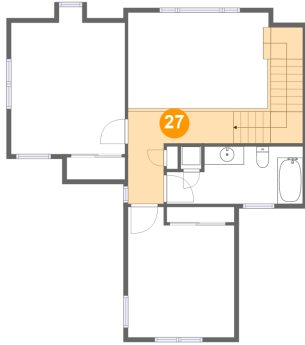


Dimensions: 14'10" x 6'3"
Area: 82 sq. ft
Counted as living area: Yes

Heated: Yes
Finished: Yes
Enclosed: Yes
Contiguous: Yes
Permitted: Yes
Wet space: Yes
Addition: No
Conversion: No

**225 Sconset Drive, Penhook, Franklin County,
Virginia, United States, 24137**

27 Floor 3 - Hall



Dimensions: 11'6" x 10'1"
Area: 134 sq. ft
Counted as living area: Yes

Heated: Yes
Finished: Yes
Enclosed: Yes
Contiguous: Yes
Permitted: Yes
Wet space: No
Addition: No
Conversion: No