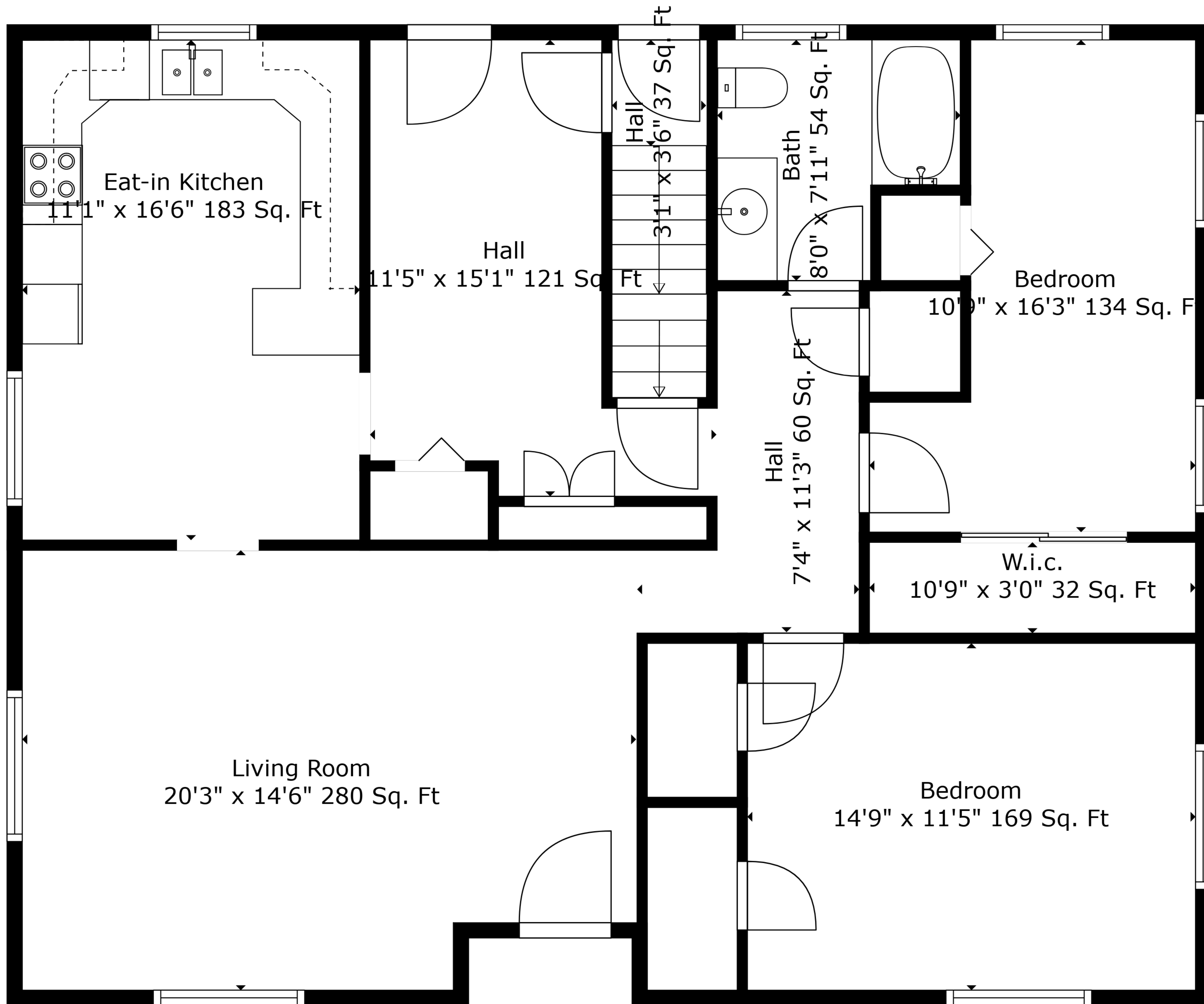


Basement  
38'8" x 31'3" 896 Sq. Ft

**TOTAL: 1727 sq. ft**  
BELOW GROUND: 0 sq. ft, FLOOR 2: 1198 sq. ft, FLOOR 3: 529 sq. ft  
EXCLUDED AREAS: BASEMENT: 896 sq. ft, LOW CEILING: 80 sq. ft

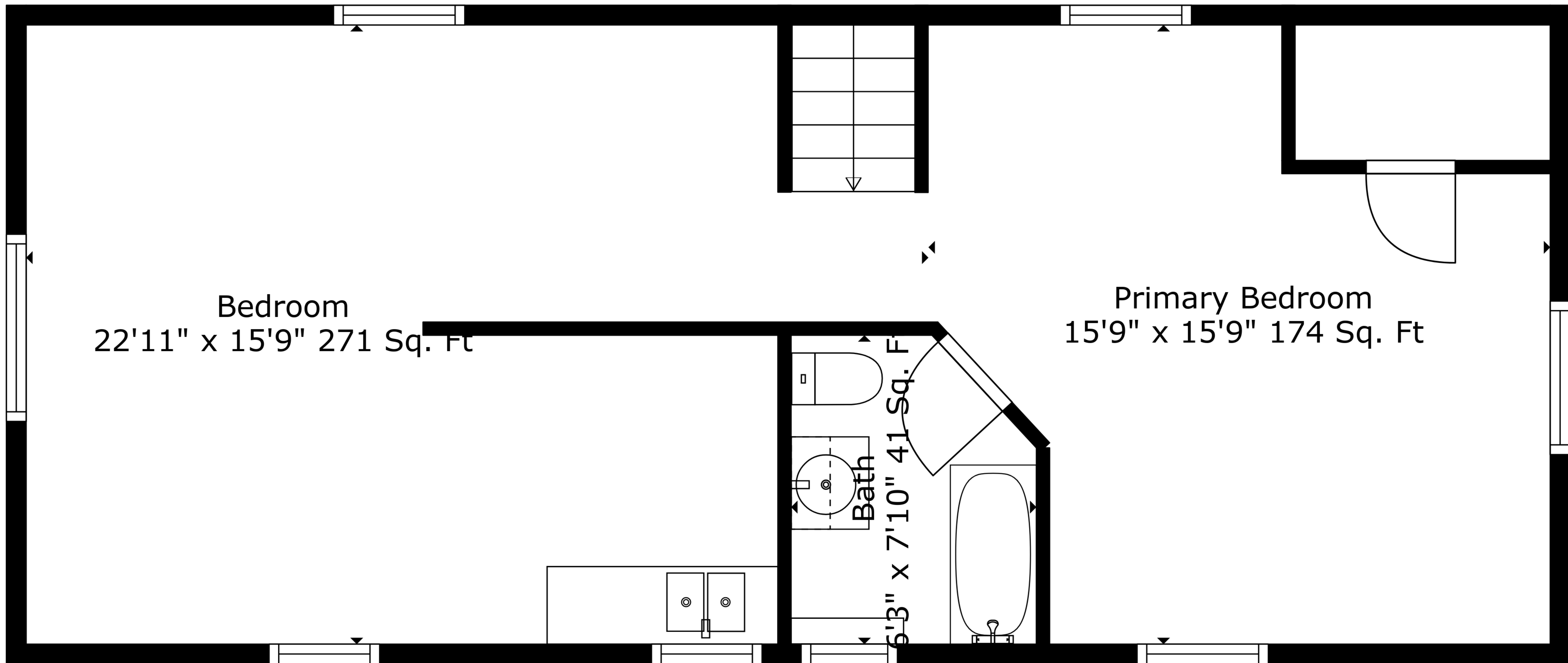
Measurements Are Deemed Highly Reliable But Not Guaranteed.



**TOTAL: 1727 sq. ft**

BELOW GROUND: 0 sq. ft, FLOOR 2: 1198 sq. ft, FLOOR 3: 529 sq. ft  
 EXCLUDED AREAS: BASEMENT: 896 sq. ft, LOW CEILING: 80 sq. ft

Measurements Are Deemed Highly Reliable But Not Guaranteed.



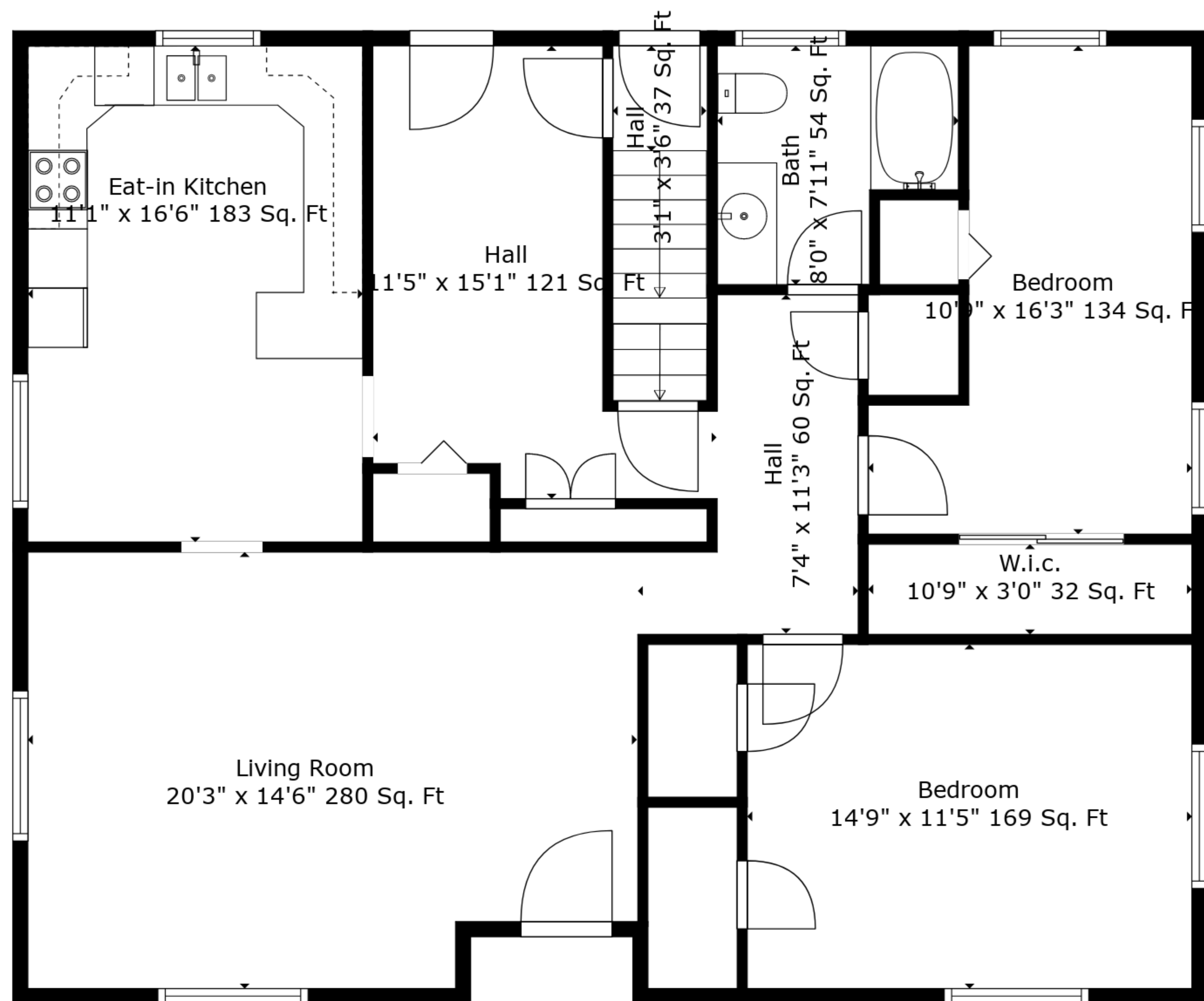
Bedroom  
22'11" x 15'9" 271 Sq. Ft

Primary Bedroom  
15'9" x 15'9" 174 Sq. Ft

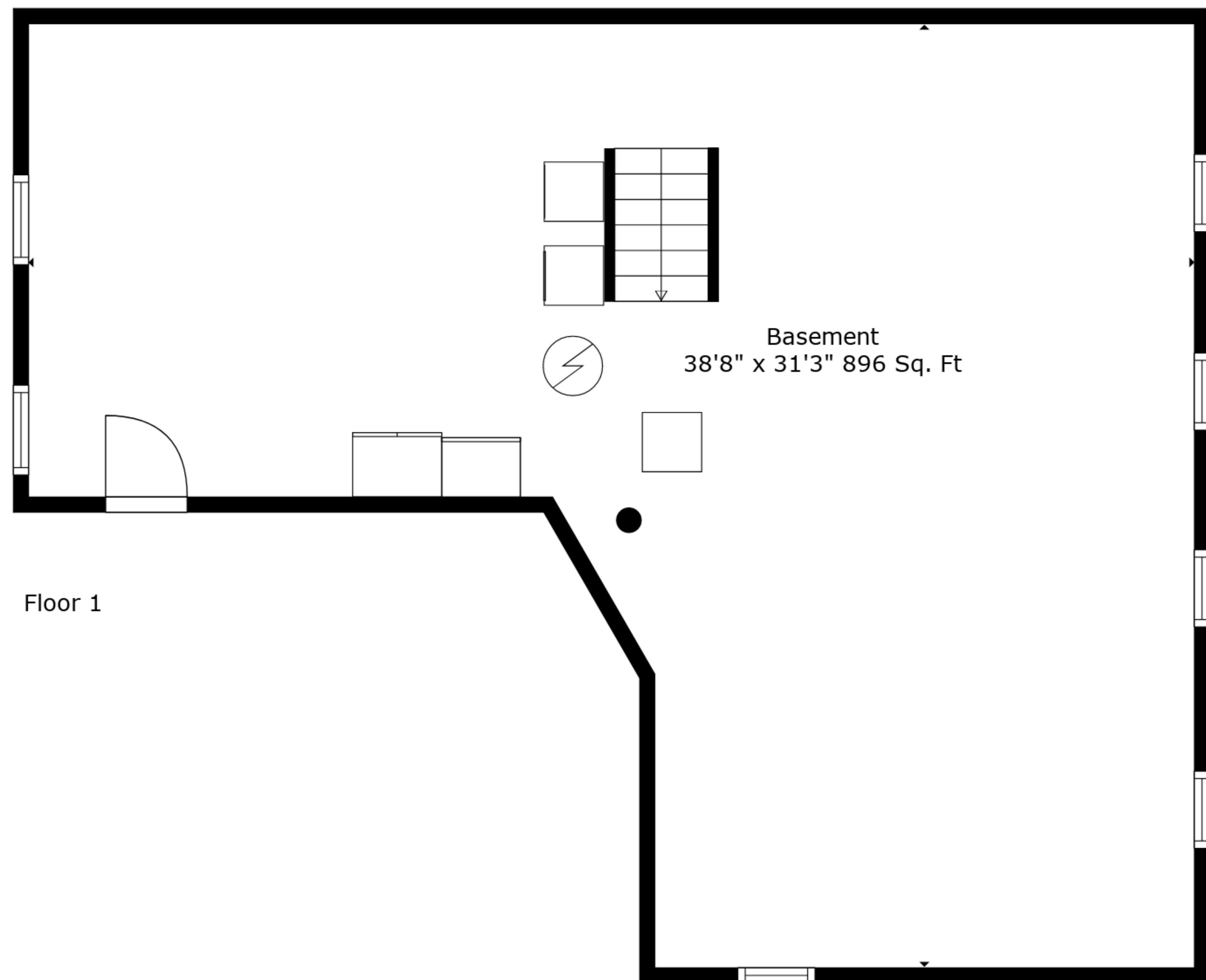
Bath  
6'3" x 7'10" 41 Sq. Ft

**TOTAL: 1727 sq. ft**  
BELOW GROUND: 0 sq. ft, FLOOR 2: 1198 sq. ft, FLOOR 3: 529 sq. ft  
EXCLUDED AREAS: BASEMENT: 896 sq. ft, LOW CEILING: 80 sq. ft

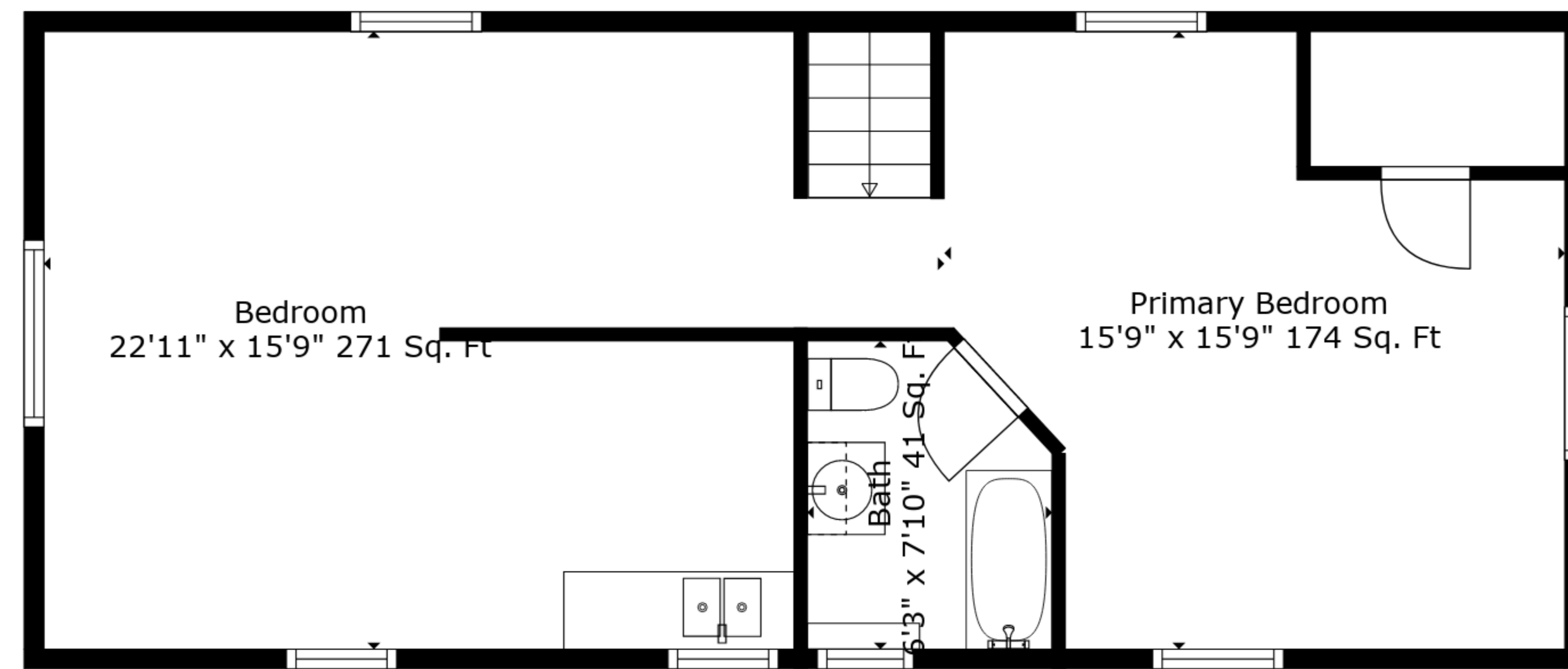
Measurements Are Deemed Highly Reliable But Not Guaranteed.



Floor 2



Floor 1



Floor 3

**TOTAL: 1727 sq. ft**  
 BELOW GROUND: 0 sq. ft, FLOOR 2: 1198 sq. ft, FLOOR 3: 529 sq. ft  
 EXCLUDED AREAS: BASEMENT: 896 sq. ft, LOW CEILING: 80 sq. ft

Measurements Are Deemed Highly Reliable But Not Guaranteed.