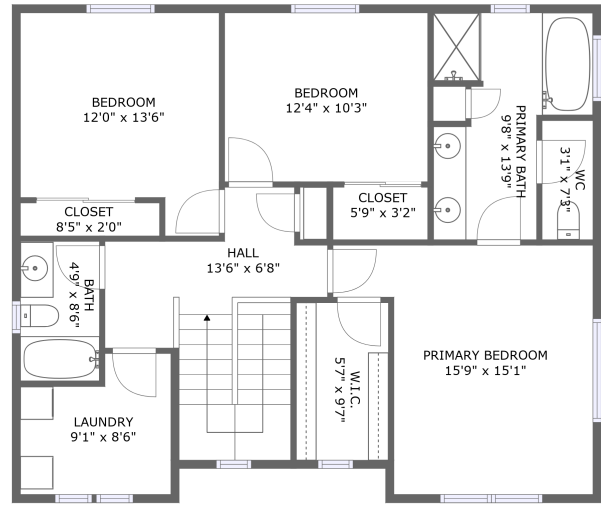


# 3435 Oakcrest Drive, Forest Grove, Washington County, Oregon, United States, 97116



FLOOR 1




FLOOR 2

## Property Summary

 **1** garages

 **3** bedrooms

 **2** bathrooms

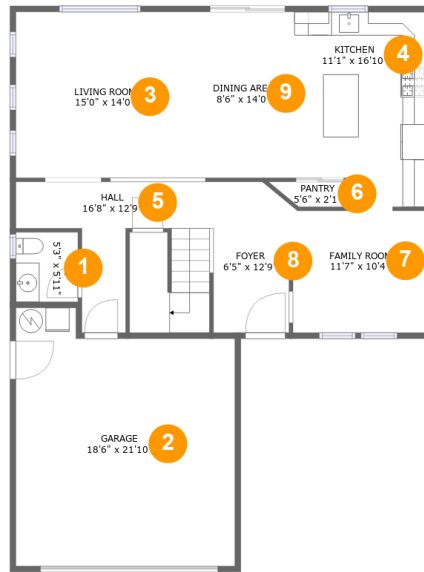
 **1** half baths

 **2** floors

 **2,026** Gross Living Area sqft

 **2,437** total sqft

# 3435 Oakcrest Drive, Forest Grove, Washington County, Oregon, United States, 97116



## Room Dimensions

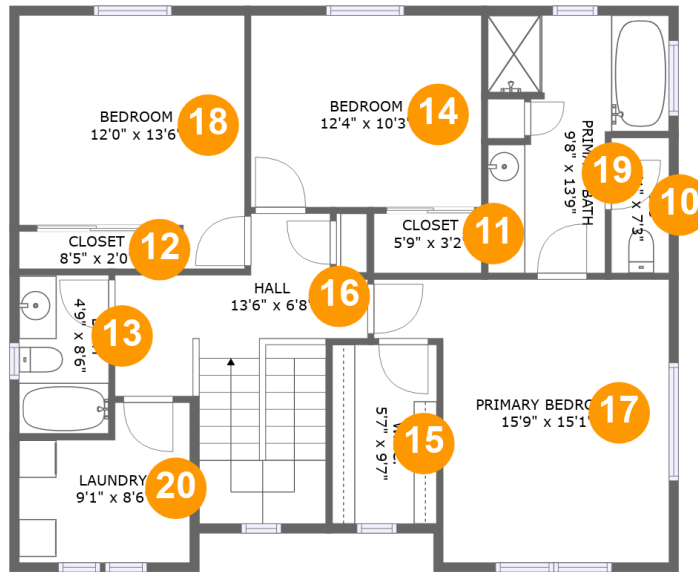
Floor 1

Total sqft: 1387

Living area: 976

#	Room name	Dimensions	Area (sqft)	Counted as Living Area
1	Wc	5'3" x 5'11"	31 sq. ft	Yes
2	Garage	18'6" x 21'10"	369 sq. ft	No
3	Living Room	15'0" x 14'0"	210 sq. ft	Yes
4	Kitchen	11'1" x 16'10"	172 sq. ft	Yes
5	Hall	16'8" x 12'9"	159 sq. ft	Yes
6	Pantry	5'6" x 2'1"	12 sq. ft	No
7	Family Room	11'7" x 10'4"	119 sq. ft	Yes
8	Foyer	6'5" x 12'9"	79 sq. ft	Yes
9	Dining Area	8'6" x 14'0"	120 sq. ft	Yes

**3435 Oakcrest Drive, Forest Grove, Washington County, Oregon, United States, 97116**



**Room Dimensions**

**Floor 2**

**Total sqft: 1050**

**Living area: 1050**

#	Room name	Dimensions	Area (sqft)	Counted as Living Area
10	Wc	3'1" x 7'3"	22 sq. ft	Yes
11	Closet	5'9" x 3'2"	18 sq. ft	Yes
12	Closet	8'5" x 2'0"	17 sq. ft	Yes
13	Bath	4'9" x 8'6"	40 sq. ft	Yes
14	Bedroom	12'4" x 10'3"	126 sq. ft	Yes
15	W.i.c.	5'7" x 9'7"	53 sq. ft	Yes
16	Hall	13'6" x 6'8"	140 sq. ft	Yes
17	Primary Bedroom	15'9" x 15'1"	194 sq. ft	Yes
18	Bedroom	12'0" x 13'6"	142 sq. ft	Yes
19	Primary Bath	9'8" x 13'9"	101 sq. ft	Yes
20	Laundry	9'1" x 8'6"	68 sq. ft	Yes

# 3435 Oakcrest Drive, Forest Grove, Washington County, Oregon, United States, 97116

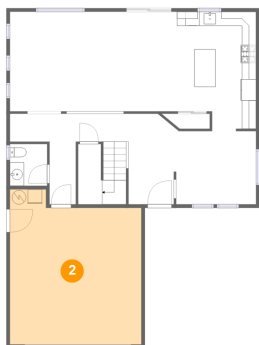
## 1 Floor 1 - Wc



Dimensions: 5'3" x 5'11"  
Area: 31 sq. ft  
Counted as Living Area:  
Yes

Heated: Yes  
Finished: Yes  
Enclosed: Yes  
Contiguous:  
Yes  
Permitted: Yes  
Wet Space: Yes  
Addition: No  
Conversion: No

## 2 Floor 1 - Garage



Dimensions: 18'6" x 21'10"  
Area: 369 sq. ft  
Counted as Living Area: No

Heated: No  
Finished: No  
Enclosed: Yes  
Contiguous: Yes  
Permitted: Yes  
Wet Space: No  
Addition: No  
Conversion: No

# 3435 Oakcrest Drive, Forest Grove, Washington County, Oregon, United States, 97116

## 3 Floor 1 - Living Room



Dimensions: 15'0" x 14'0"  
Area: 210 sq. ft  
Counted as Living Area:  
Yes

Heated: Yes  
Finished: Yes  
Enclosed: Yes  
Contiguous:  
Yes  
Permitted: Yes  
Wet Space: No  
Addition: No  
Conversion: No

## 4 Floor 1 - Kitchen



Dimensions: 11'1" x 16'10"  
Area: 172 sq. ft  
Counted as Living Area:  
Yes

Heated: Yes  
Finished: Yes  
Enclosed: Yes  
Contiguous:  
Yes  
Permitted: Yes  
Wet Space: No  
Addition: No  
Conversion: No

## 5 Floor 1 - Hall



Dimensions: 16'8" x 12'9"  
Area: 159 sq. ft  
Counted as Living Area:  
Yes

Heated: Yes  
Finished: Yes  
Enclosed: Yes  
Contiguous:  
Yes  
Permitted: Yes  
Wet Space: No  
Addition: No  
Conversion: No

# 3435 Oakcrest Drive, Forest Grove, Washington County, Oregon, United States, 97116

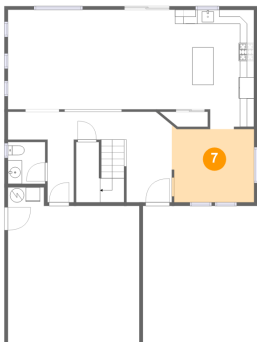
## 6 Floor 1 - Pantry



Dimensions: 5'6" x 2'1"  
Area: 12 sq. ft  
Counted as Living Area: No

Heated: Yes  
Finished: Yes  
Enclosed: Yes  
Contiguous: No  
Permitted: Yes  
Wet Space: No  
Addition: No  
Conversion: No

## 7 Floor 1 - Family Room



Dimensions: 11'7" x 10'4"  
Area: 119 sq. ft  
Counted as Living Area:  
Yes

Heated: Yes  
Finished: Yes  
Enclosed: Yes  
Contiguous:  
Yes  
Permitted: Yes  
Wet Space: No  
Addition: No  
Conversion: No

## 8 Floor 1 - Foyer

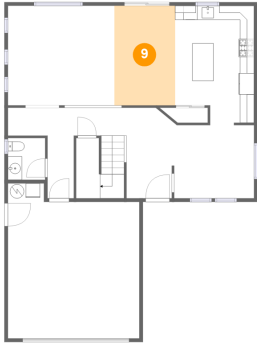


Dimensions: 6'5" x 12'9"  
Area: 79 sq. ft  
Counted as Living Area:  
Yes

Heated: Yes  
Finished: Yes  
Enclosed: Yes  
Contiguous:  
Yes  
Permitted: Yes  
Wet Space: No  
Addition: No  
Conversion: No

# 3435 Oakcrest Drive, Forest Grove, Washington County, Oregon, United States, 97116

## 9 Floor 1 - Dining Area



Dimensions: 8'6" x 14'0"  
Area: 120 sq. ft  
Counted as Living Area:  
Yes

Heated: Yes  
Finished: Yes  
Enclosed: Yes  
Contiguous:  
Yes  
Permitted: Yes  
Wet Space: No  
Addition: No  
Conversion: No

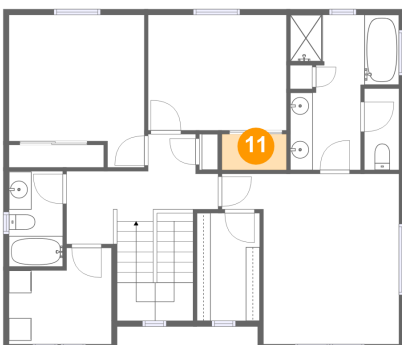
## 10 Floor 2 - Wc



Dimensions: 3'1" x 7'3"  
Area: 22 sq. ft  
Counted as Living Area:  
Yes

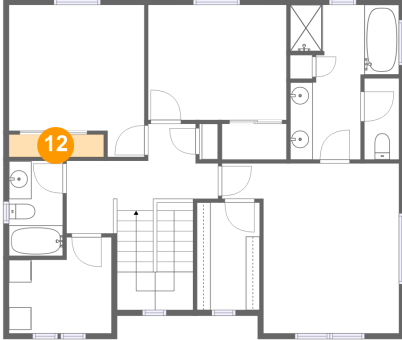
Heated: Yes  
Finished: Yes  
Enclosed: Yes  
Contiguous:  
Yes  
Permitted: Yes  
Wet Space: Yes  
Addition: No  
Conversion: No

## 11 Floor 2 - Closet



Dimensions: 5'9" x 3'2"  
Area: 18 sq. ft  
Counted as Living Area:  
Yes

Heated: Yes  
Finished: Yes  
Enclosed: Yes  
Contiguous:  
Yes  
Permitted: Yes  
Wet Space: No  
Addition: No  
Conversion: No

**3435 Oakcrest Drive, Forest Grove, Washington  
County, Oregon, United States, 97116****12 Floor 2 - Closet**

Dimensions: 8'5" x 2'0"  
Area: 17 sq. ft  
Counted as Living Area:  
Yes

Heated: Yes  
Finished: Yes  
Enclosed: Yes  
Contiguous:  
Yes  
Permitted: Yes  
Wet Space: No  
Addition: No  
Conversion: No

**13 Floor 2 - Bath**

Dimensions: 4'9" x 8'6"  
Area: 40 sq. ft  
Counted as Living Area:  
Yes

Heated: Yes  
Finished: Yes  
Enclosed: Yes  
Contiguous:  
Yes  
Permitted: Yes  
Wet Space: Yes  
Addition: No  
Conversion: No

**14 Floor 2 - Bedroom**

Dimensions: 12'4" x 10'3"  
Area: 126 sq. ft  
Counted as Living Area:  
Yes

Heated: Yes  
Finished: Yes  
Enclosed: Yes  
Contiguous:  
Yes  
Permitted: Yes  
Wet Space: No  
Addition: No  
Conversion: No



**3435 Oakcrest Drive, Forest Grove, Washington  
County, Oregon, United States, 97116****15 Floor 2 - W.i.c.**

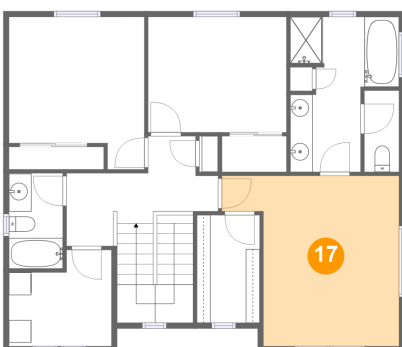
Dimensions: 5'7" x 9'7"  
Area: 53 sq. ft  
Counted as Living Area:  
Yes

Heated: Yes  
Finished: Yes  
Enclosed: Yes  
Contiguous:  
Yes  
Permitted: Yes  
Wet Space: No  
Addition: No  
Conversion: No

**16 Floor 2 - Hall**

Dimensions: 13'6" x 6'8"  
Area: 140 sq. ft  
Counted as Living Area:  
Yes

Heated: Yes  
Finished: Yes  
Enclosed: Yes  
Contiguous:  
Yes  
Permitted: Yes  
Wet Space: No  
Addition: No  
Conversion: No

**17 Floor 2 - Primary Bedroom**

Dimensions: 15'9" x 15'1"  
Area: 194 sq. ft  
Counted as Living Area:  
Yes

Heated: Yes  
Finished: Yes  
Enclosed: Yes  
Contiguous:  
Yes  
Permitted: Yes  
Wet Space: No  
Addition: No  
Conversion: No

# 3435 Oakcrest Drive, Forest Grove, Washington County, Oregon, United States, 97116

## 18 Floor 2 - Bedroom



Dimensions: 12'0" x 13'6"  
Area: 142 sq. ft  
Counted as Living Area:  
Yes

Heated: Yes  
Finished: Yes  
Enclosed: Yes  
Contiguous:  
Yes  
Permitted: Yes  
Wet Space: No  
Addition: No  
Conversion: No

## 19 Floor 2 - Primary Bath



Dimensions: 9'8" x 13'9"  
Area: 101 sq. ft  
Counted as Living Area:  
Yes

Heated: Yes  
Finished: Yes  
Enclosed: Yes  
Contiguous:  
Yes  
Permitted: Yes  
Wet Space: Yes  
Addition: No  
Conversion: No

## 20 Floor 2 - Laundry



Dimensions: 9'1" x 8'6"  
Area: 68 sq. ft  
Counted as Living Area:  
Yes

Heated: Yes  
Finished: Yes  
Enclosed: Yes  
Contiguous:  
Yes  
Permitted: Yes  
Wet Space: No  
Addition: No  
Conversion: No