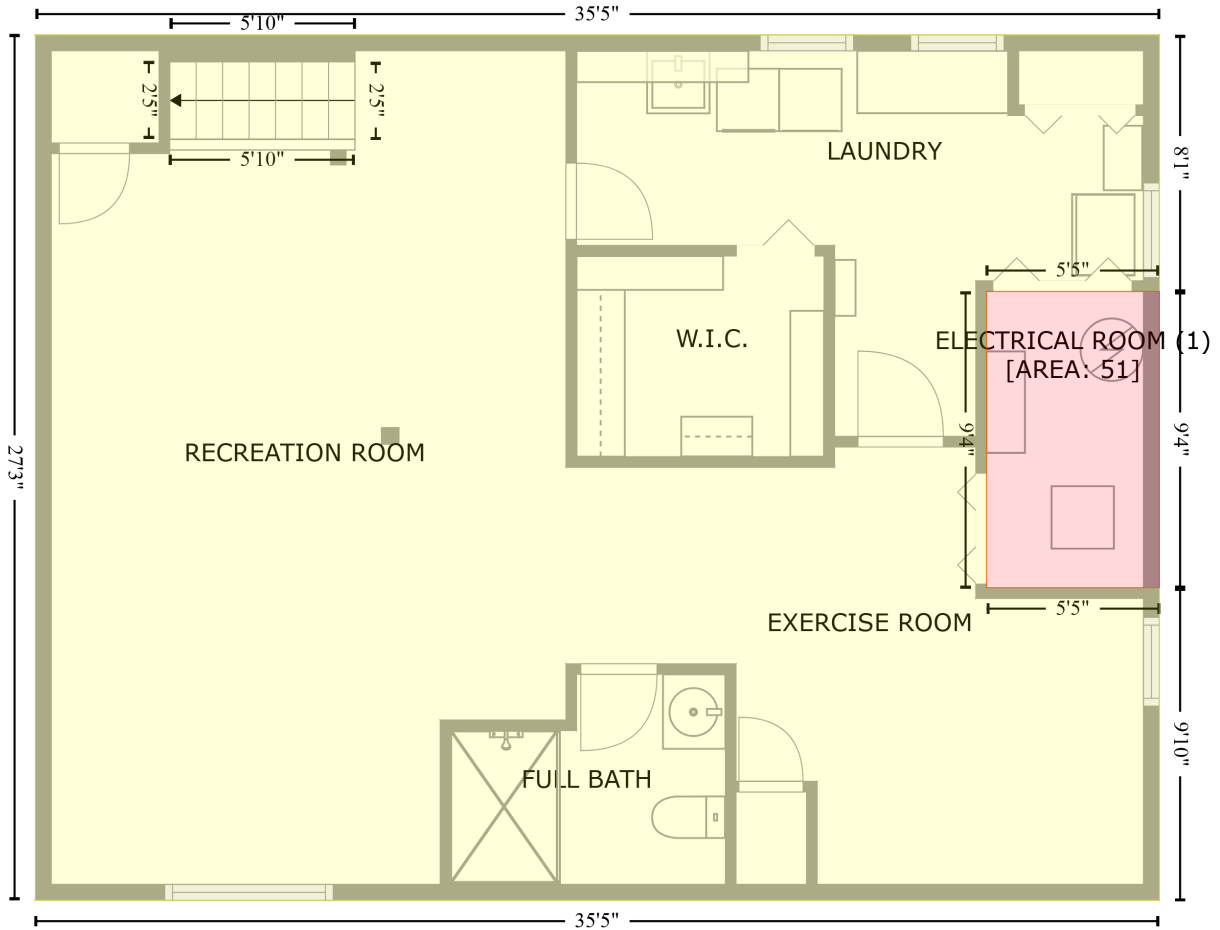


6002 Seabrook Road, Lanham, Prince George's County, Maryland, United States, 20706

Gross Living Area: 1353 sq. ft

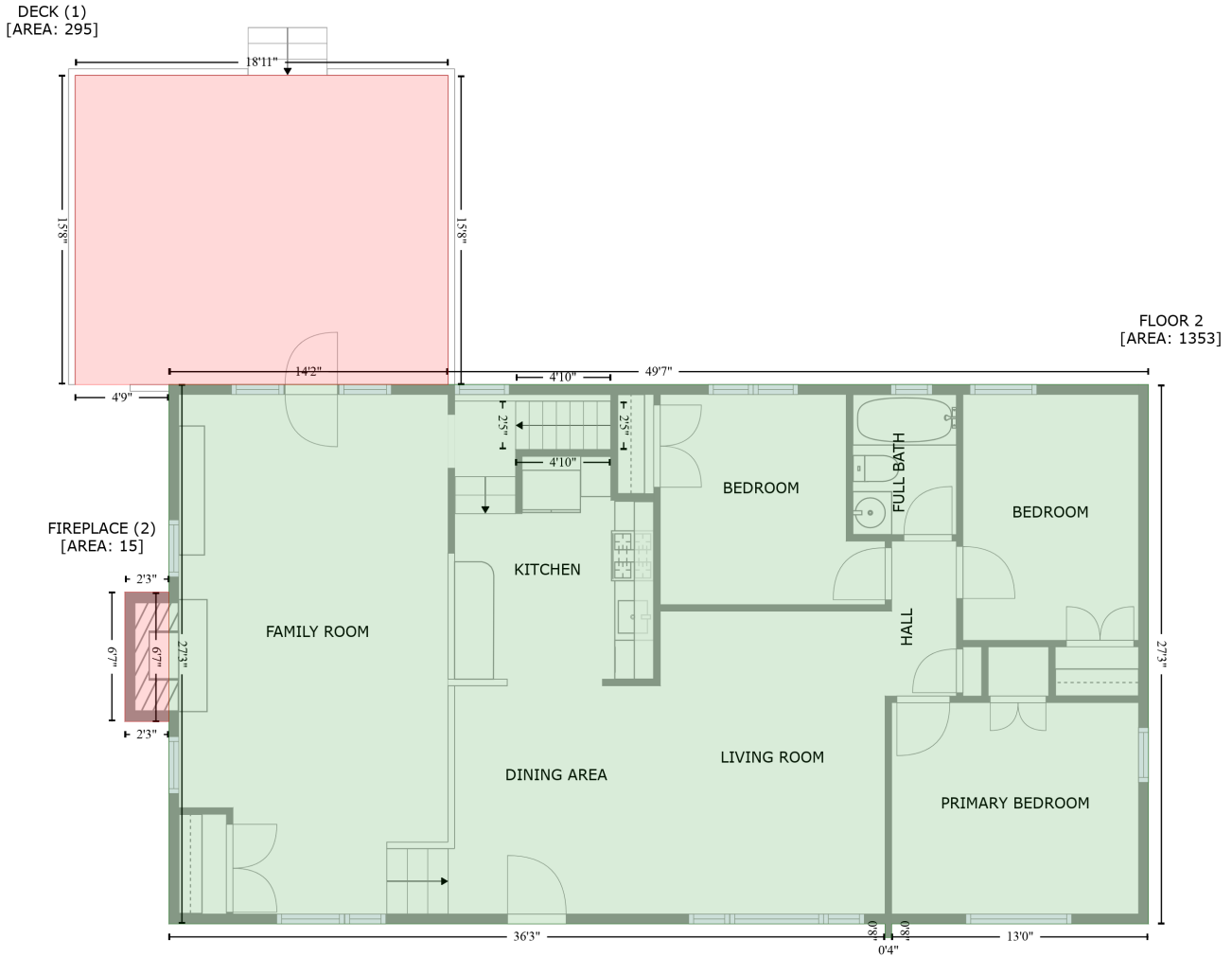
FLOOR 1
[AREA: 916]



Space	Area (sq. ft)	Calculation <small>Coordinate Polygon Area Algorithm using inches</small>
FLOOR 1 (Living area)	916	$-((649.2 + 649.2) * (327 - 424) + (649.2 + 583.7) * (424 - 424) + (583.7 + 583.7) * (424 - 536.2) + (583.7 + 649.2) * (536.2 - 536.2) + (649.2 + 649.2) * (536.2 - 654.4) + (649.2 + 223.7) * (654.4 - 654.4) + (223.7 + 223.7) * (654.4 - 327) + (223.7 + 649.2) * (327 - 327)) * 0.5 * 0.00694$
ELECTRICAL ROOM (Non-living area)	51	$-((649.2 + 649.2) * (424 - 536.2) + (649.2 + 583.7) * (536.2 - 536.2) + (583.7 + 583.7) * (536.2 - 424) + (583.7 + 649.2) * (424 - 424)) * 0.5 * 0.00694$

6002 Seabrook Road, Lanham, Prince George's County, Maryland, United States, 20706

Gross Living Area: 1353 sq. ft



Space	Area (sq. ft)	Calculation <small>Coordinate Polygon Area Algorithm using inches</small>
FLOOR 2 (Living area)	1353	$-\left((651 + 651) * (328.3 - 655.7) + (651 + 495) * (655.7 - 655.7) + (495 + 495) * (655.7 - 664) + (495 + 491) * (664 - 664) + (491 + 491) * (664 - 655.7) + (491 + 56) * (655.7 - 655.7) + (56 + 56) * (655.7 - 328.3) + (56 + 651) * (328.3 - 328.3)\right) * 0.5 * 0.00694$
DECK (Non-living area)	295	$-\left((225.6 + 225.6) * (140.6 - 328.3) + (225.6 + 56) * (328.3 - 328.3) + (56 + 56) * (328.3 - 328.3) + (56 + -1) * (328.3 - 328.4) + (-1 + -1) * (328.4 - 140.6) + (-1 + 225.6) * (140.6 - 140.6)\right) * 0.5 * 0.00694$
FIREPLACE (Non-living area)	15	$-\left((56 + 56) * (454.3 - 532.9) + (56 + 29.2) * (532.9 - 532.9) + (29.2 + 29.2) * (532.9 - 454.3) + (29.2 + 56) * (454.3 - 454.3)\right) * 0.5 * 0.00694$