



# INDUSTRIAL ZONING

1715 WATSON AVE.  
YPSILANTI, MI 48198

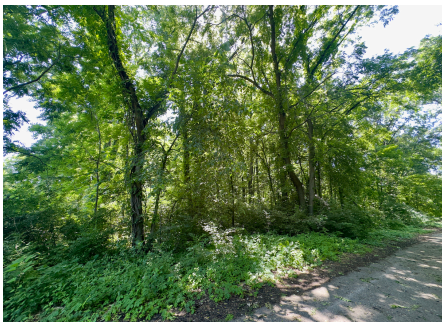
OFFERED AT **\$16,000**

TYPE INDUSTRIAL | COMMERCIAL

SIZE +/- 0.27 ACRES

## PROPERTY OVERVIEW

Offered is a 0.27-acre, densely wooded, vacant lot located in Ypsilanti Charter Township, MI. Zoned for Light Commercial/Industrial use, this property features flexible zoning language that allows for a wide range of development options. Enjoy excellent connectivity with easy access off I-94 Exit 186 (Willow Run Airport/W) and convenient access to Willow Run Airport and YCUA—with noted dead ends at I-94. Buyer/Buyer's Agent to verify all details, confirm zoning language and intended use with Ypsilanti Township.



*Mitchell Gonzales*

Licensed Realtor®

(989) 414-0232

Michigan RE License  
#6501465077



RESULTS THAT MOVE YOU