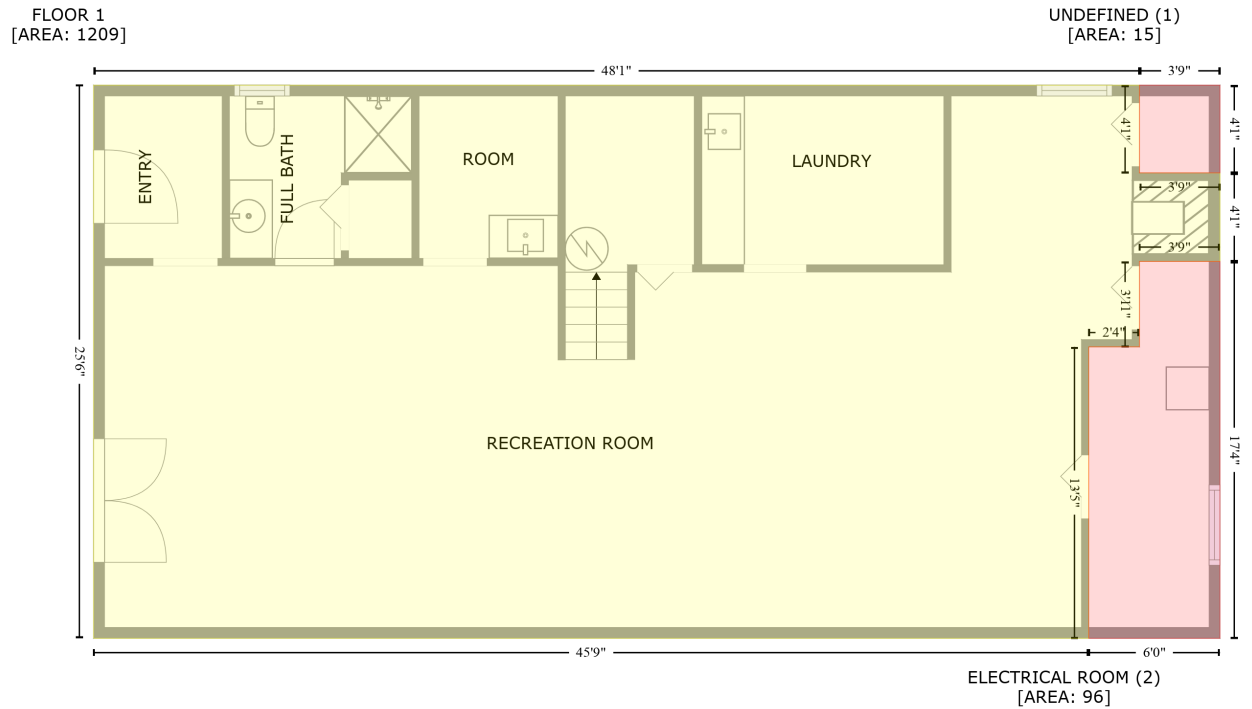


9575 Old Lanesville Road, Georgetown, Floyd County, Indiana, United States, 47122

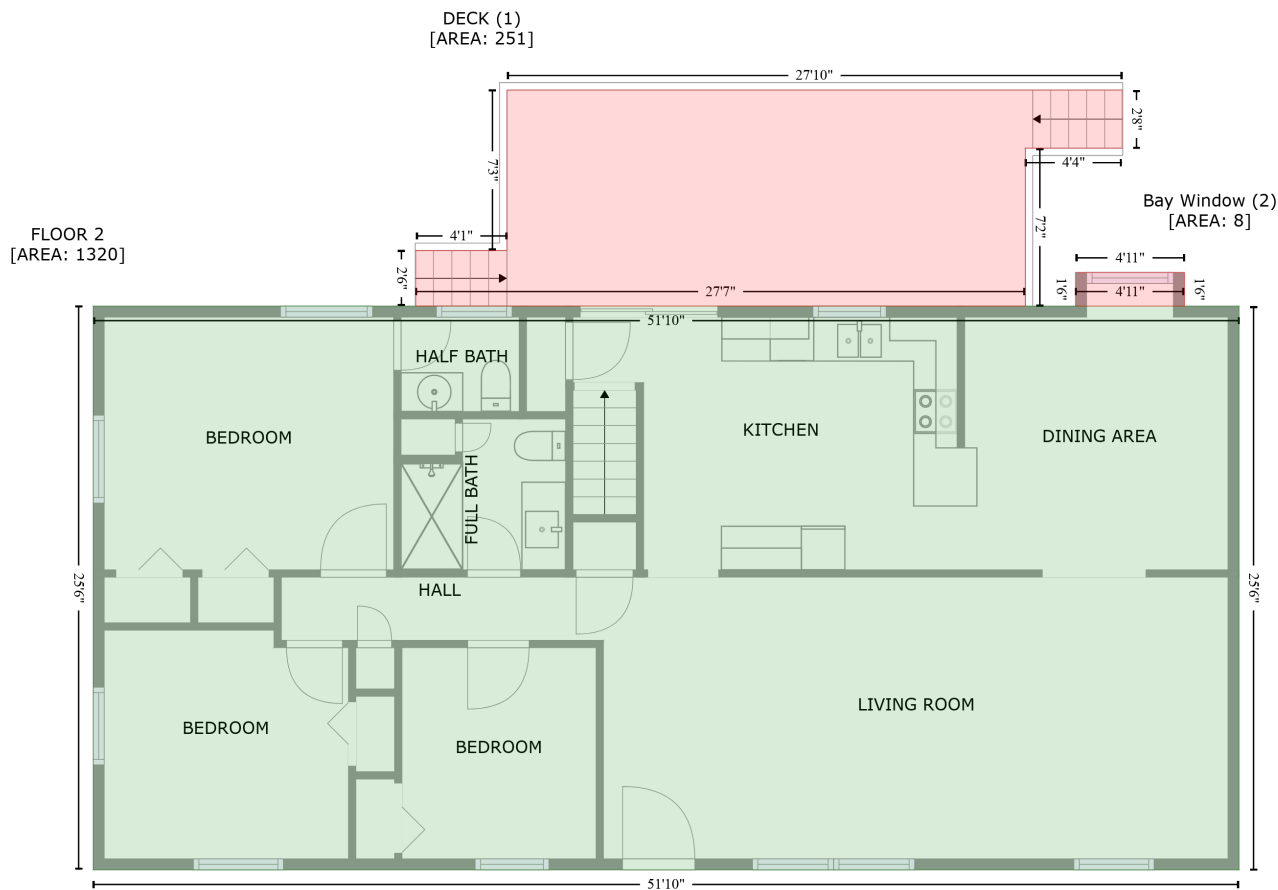
Gross Living Area: 1320 sq. ft



Space	Area (sq. ft)	Calculation <small>Coordinate Polygon Area Algorithm using inches</small>
FLOOR 1 (Living area)	1209	$-\left((622.5 + 622.5) * (116.1 - 164.6) + (622.5 + 667) * (164.6 - 164.6) + (667 + 667) * (164.6 - 213.5) + (667 + 622.5) * (213.5 - 213.5) + (622.5 + 622.5) * (213.5 - 260.7) + (622.5 + 594.5) * (260.7 - 260.7) + (594.5 + 594.5) * (260.7 - 421.8) + (594.5 + 45.1) * (421.8 - 421.8) + (45.1 + 45.1) * (421.8 - 116.1) + (45.1 + 622.5) * (116.1 - 116.1)\right) * 0.5 * 0.00694$
UNDEFINED (Non-living area)	15	$-\left((667 + 667) * (116.1 - 164.6) + (667 + 622.5) * (164.6 - 164.6) + (622.5 + 622.5) * (164.6 - 116.1) + (622.5 + 667) * (116.1 - 116.1)\right) * 0.5 * 0.00694$
ELECTRICAL ROOM (Non-living area)	96	$-\left((667 + 667) * (213.5 - 421.8) + (667 + 594.5) * (421.8 - 421.8) + (594.5 + 594.5) * (421.8 - 260.7) + (594.5 + 622.5) * (260.7 - 260.7) + (622.5 + 622.5) * (260.7 - 213.5) + (622.5 + 667) * (213.5 - 213.5)\right) * 0.5 * 0.00694$

9575 Old Lanesville Road, Georgetown, Floyd County, Indiana, United States, 47122

Gross Living Area: 1320 sq. ft



Space	Area (sq. ft)	Calculation <small>Coordinate Polygon Area Algorithm using inches</small>
FLOOR 2 (Living area)	1320	$-((624.9 + 624.9) * (20.1 - 325.8) + (624.9 + 3.1) * (325.8 - 325.8) + (3.1 + 3.1) * (325.8 - 20.1) + (3.1 + 624.9) * (20.1 - 20.1)) * 0.5 * 0.00694$
DECK (Non-living area)	251	$-((561.4 + 561.4) * (-97.1 - -65.6) + (561.4 + 508.9) * (-65.6 - -65.6) + (508.9 + 508.9) * (-65.6 - 20.1) + (508.9 + 178.2) * (20.1 - 20.1) + (178.2 + 178.2) * (20.1 - -10.1) + (178.2 + 227.6) * (-10.1 - -10.1) + (227.6 + 227.6) * (-10.1 - -97.1) + (227.6 + 561.4) * (-97.1 - -97.1)) * 0.5 * 0.00694$
Bay Window (Non-living area)	8	$-((595.3 + 595.3) * (1.8 - 20.1) + (595.3 + 536.2) * (20.1 - 20.1) + (536.2 + 536.2) * (20.1 - 1.8) + (536.2 + 595.3) * (1.8 - 1.8)) * 0.5 * 0.00694$