

Home report

2610 King Street Northeast, Roanoke, Virginia 24012, United States




Total Area: 2094 sq. ft


Below Ground: 975 sq. ft, Floor 2: 1119 sq. ft

Excluded: Utility 88 sq. ft, Porch 114 sq. ft, Walls: 146 sq. ft

Property summary

 **2** Floors

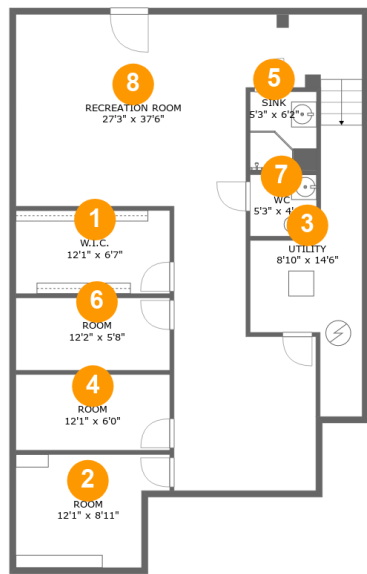
 **3** Bedrooms

 **2** Bathrooms

 **2** Half baths

Home report

2610 King Street Northeast, Roanoke, Virginia 24012, United States



Room dimensions

Floor 1 Below ground

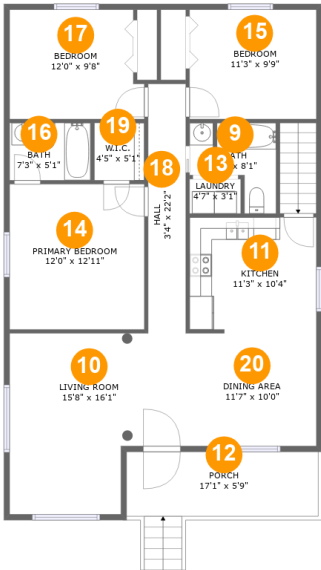
Total:975sqft

Excluded: 88sqft

#		Max Dimensions	sqft	Included
1	W.I.C.	12'1" x 6'7"	80 sq. ft	Yes
2	Room	12'1" x 8'11"	95 sq. ft	Yes
3	Utility	8'10" x 14'6"	88 sq. ft	No
4	Room	12'1" x 6'0"	72 sq. ft	Yes
5	Sink	5'3" x 6'2"	32 sq. ft	Yes
6	Room	12'2" x 5'8"	69 sq. ft	Yes
7	WC	5'3" x 4'10"	25 sq. ft	Yes
8	Recreation Room	27'3" x 37'6"	559 sq. ft	Yes

Home report

2610 King Street Northeast, Roanoke, Virginia 24012, United States



Room dimensions

Floor 2

Total:1119sqft

Excluded: 114sqft

#		Max Dimensions	sqft	Included
9	Bath	7'8" x 8'1"	45 sq. ft	Yes
10	Living Room	15'8" x 16'1"	218 sq. ft	Yes
11	Kitchen	11'3" x 10'4"	115 sq. ft	Yes
12	Porch	17'1" x 5'9"	114 sq. ft	No
13	Laundry	4'7" x 3'1"	14 sq. ft	Yes
14	Primary Bedroom	12'0" x 12'11"	155 sq. ft	Yes
15	Bedroom	11'3" x 9'9"	110 sq. ft	Yes
16	Bath	7'3" x 5'1"	37 sq. ft	Yes
17	Bedroom	12'0" x 9'8"	110 sq. ft	Yes
18	Hall	3'4" x 22'2"	74 sq. ft	Yes
19	W.I.C.	4'5" x 5'1"	23 sq. ft	Yes

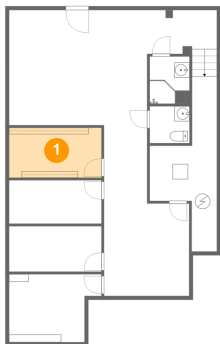
Home report

2610 King Street Northeast, Roanoke, Virginia 24012, United States

#		Max Dimensions	sqft	Included
20	Dining Area	11'7" x 10'0"	117 sq. ft	Yes

2610 King Street Northeast, Roanoke, Virginia 24012, United States

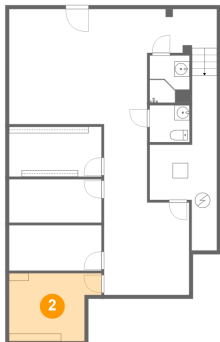
1 Floor 1 - W.I.C.



Max Dimensions: 12'1" x 6'7"
Calculated Area: 80 sq. ft
Included: Yes

Heated: Yes
Finished: Yes
Enclosed: Yes
Contiguous: Yes
Permitted: Yes
Wet space: No
Addition: No
Conversion: No

2 Floor 1 - Room

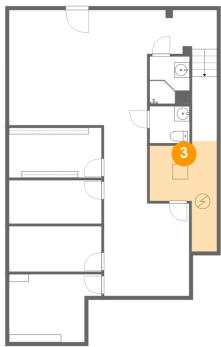


Max Dimensions: 12'1" x 8'11"
Calculated Area: 95 sq. ft
Included: Yes

Heated: Yes
Finished: Yes
Enclosed: Yes
Contiguous: Yes
Permitted: Yes
Wet space: No
Addition: No
Conversion: No

2610 King Street Northeast, Roanoke, Virginia 24012, United States

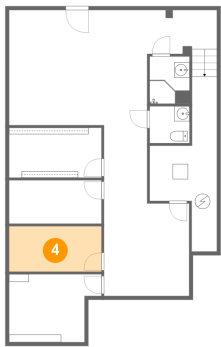
3 Floor 1 - Utility



Max Dimensions: 8'10" x 14'6"
Calculated Area: 88 sq. ft
Included: No

Heated: Yes
Finished: No
Enclosed: Yes
Contiguous: Yes
Permitted: Yes
Wet space: No
Addition: No
Conversion: No

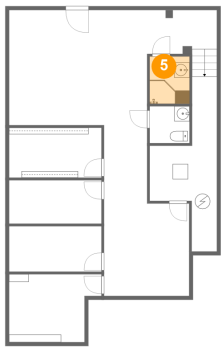
4 Floor 1 - Room



Max Dimensions: 12'1" x 6'0"
Calculated Area: 72 sq. ft
Included: Yes

Heated: Yes
Finished: Yes
Enclosed: Yes
Contiguous: Yes
Permitted: Yes
Wet space: No
Addition: No
Conversion: No

5 Floor 1 - Sink

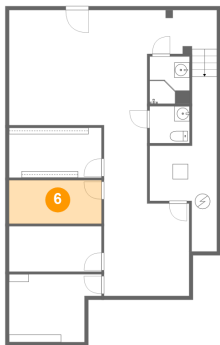


Max Dimensions: 5'3" x 6'2"
Calculated Area: 32 sq. ft
Included: Yes

Heated: Yes
Finished: Yes
Enclosed: Yes
Contiguous: Yes
Permitted: Yes
Wet space: Yes
Addition: No
Conversion: No

2610 King Street Northeast, Roanoke, Virginia 24012, United States

6 Floor 1 - Room



Max Dimensions: 12'2" x 5'8"
Calculated Area: 69 sq. ft
Included: Yes

Heated: Yes
Finished: Yes
Enclosed: Yes
Contiguous: Yes
Permitted: Yes
Wet space: No
Addition: No
Conversion: No

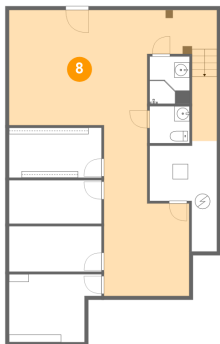
7 Floor 1 - WC



Max Dimensions: 5'3" x 4'10"
Calculated Area: 25 sq. ft
Included: Yes

Heated: Yes
Finished: Yes
Enclosed: Yes
Contiguous: Yes
Permitted: Yes
Wet space: Yes
Addition: No
Conversion: No

8 Floor 1 - Recreation Room



Max Dimensions: 27'3" x 37'6"
Calculated Area: 559 sq. ft
Included: Yes

Heated: Yes
Finished: Yes
Enclosed: Yes
Contiguous: Yes
Permitted: Yes
Wet space: No
Addition: No
Conversion: No

2610 King Street Northeast, Roanoke, Virginia 24012, United States

9 Floor 2 - Bath



Max Dimensions: 7'8" x 8'1"
Calculated Area: 45 sq. ft
Included: Yes

Heated: Yes
Finished: Yes
Enclosed: Yes
Contiguous: Yes
Permitted: Yes
Wet space: Yes
Addition: No
Conversion: No

10 Floor 2 - Living Room



Max Dimensions: 15'8" x 16'1"
Calculated Area: 218 sq. ft
Included: Yes

Heated: Yes
Finished: Yes
Enclosed: Yes
Contiguous: Yes
Permitted: Yes
Wet space: No
Addition: No
Conversion: No

11 Floor 2 - Kitchen



Max Dimensions: 11'3" x 10'4"
Calculated Area: 115 sq. ft
Included: Yes

Heated: Yes
Finished: Yes
Enclosed: Yes
Contiguous: Yes
Permitted: Yes
Wet space: No
Addition: No
Conversion: No

2610 King Street Northeast, Roanoke, Virginia 24012, United States

12 Floor 2 - Porch



Max Dimensions: 17'1" x 5'9"
Calculated Area: 114 sq. ft
Included: No

Heated: No
Finished: Yes
Enclosed: No
Contiguous: Yes
Permitted: Yes
Wet space: No
Addition: No
Conversion: No

13 Floor 2 - Laundry



Max Dimensions: 4'7" x 3'1"
Calculated Area: 14 sq. ft
Included: Yes

Heated: Yes
Finished: Yes
Enclosed: Yes
Contiguous: Yes
Permitted: Yes
Wet space: No
Addition: No
Conversion: No

14 Floor 2 - Primary Bedroom



Max Dimensions: 12'0" x 12'11"
Calculated Area: 155 sq. ft
Included: Yes

Heated: Yes
Finished: Yes
Enclosed: Yes
Contiguous: Yes
Permitted: Yes
Wet space: No
Addition: No
Conversion: No

2610 King Street Northeast, Roanoke, Virginia 24012, United States

15 Floor 2 - Bedroom



Max Dimensions: 11'3" x 9'9"
Calculated Area: 110 sq. ft
Included: Yes

Heated: Yes
Finished: Yes
Enclosed: Yes
Contiguous: Yes
Permitted: Yes
Wet space: No
Addition: No
Conversion: No

16 Floor 2 - Bath



Max Dimensions: 7'3" x 5'1"
Calculated Area: 37 sq. ft
Included: Yes

Heated: Yes
Finished: Yes
Enclosed: Yes
Contiguous: Yes
Permitted: Yes
Wet space: Yes
Addition: No
Conversion: No

17 Floor 2 - Bedroom

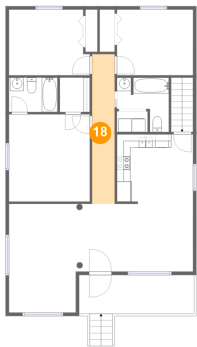


Max Dimensions: 12'0" x 9'8"
Calculated Area: 110 sq. ft
Included: Yes

Heated: Yes
Finished: Yes
Enclosed: Yes
Contiguous: Yes
Permitted: Yes
Wet space: No
Addition: No
Conversion: No

2610 King Street Northeast, Roanoke, Virginia 24012, United States

18 Floor 2 - Hall



Max Dimensions: 3'4" x 22'2"
Calculated Area: 74 sq. ft
Included: Yes

Heated: Yes
Finished: Yes
Enclosed: Yes
Contiguous: Yes
Permitted: Yes
Wet space: No
Addition: No
Conversion: No

19 Floor 2 - W.I.C.



Max Dimensions: 4'5" x 5'1"
Calculated Area: 23 sq. ft
Included: Yes

Heated: Yes
Finished: Yes
Enclosed: Yes
Contiguous: Yes
Permitted: Yes
Wet space: No
Addition: No
Conversion: No

20 Floor 2 - Dining Area



Max Dimensions: 11'7" x 10'0"
Calculated Area: 117 sq. ft
Included: Yes

Heated: Yes
Finished: Yes
Enclosed: Yes
Contiguous: Yes
Permitted: Yes
Wet space: No
Addition: No
Conversion: No