

Home data report

12 Quinn Forest Dr,Bracebridge,ON,CA



**Total Area: 1334 sq. ft**

Below Ground: 0 sq. ft, 1st Floor: 601 sq. ft, 2nd Floor: 733 sq. ft

Excluded: Utility 92 sq. ft, Laundry 138 sq. ft, Bedroom 259 sq. ft, Office 66 sq. ft, Garage 365 sq. ft, Porch 38 sq. ft, Walls: 213 sq. ft

Property summary

 **3** Floors

 **4** Bedrooms

 **2** Bathrooms

Home data report

**12 Quinn Forest Dr, Bracebridge, ON, CA**



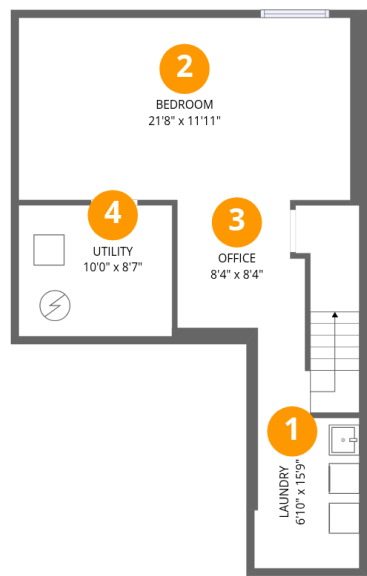
**1**  
Half baths



**1**  
Garages

Home data report

12 Quinn Forest Dr,Bracebridge,ON,CA



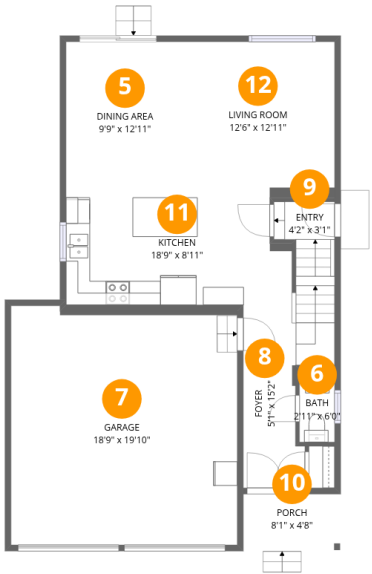
Room dimensions

Floor 1 Below grade Total:0sqft Excluded: 555sqft

#		Dimensions	sqft	Counted as living area
1	Laundry	6'10" x 15'9"	132 sq. ft	No
2	Bedroom	21'8" x 11'11"	259 sq. ft	No
3	Office	8'4" x 8'4"	66 sq. ft	No
4	Utility	10'0" x 8'7"	86 sq. ft	No

Home data report

12 Quinn Forest Dr,Bracebridge,ON,CA



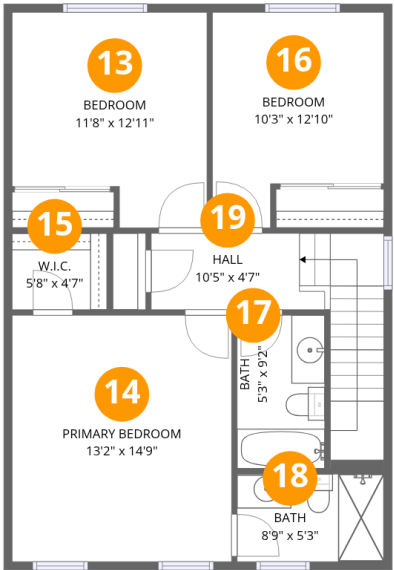
Room dimensions

Floor 2 Total:601sqft    Excluded: 403sqft

#		Dimensions	sqft	Counted as living area
5	Dining Area	9'9" x 12'11"	126 sq. ft	Yes
6	Bath	2'11" x 6'0"	18 sq. ft	Yes
7	Garage	18'9" x 19'10"	365 sq. ft	No
8	Foyer	5'1" x 15'2"	84 sq. ft	Yes
9	Entry	4'2" x 3'1"	17 sq. ft	Yes
10	Porch	8'1" x 4'8"	38 sq. ft	No
11	Kitchen	18'9" x 8'11"	176 sq. ft	Yes
12	Living Room	12'6" x 12'11"	162 sq. ft	Yes

Home data report

12 Quinn Forest Dr,Bracebridge,ON,CA

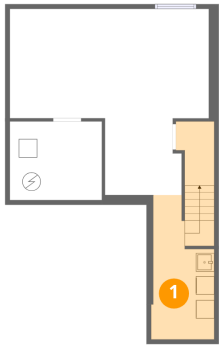


Room dimensions

Floor 3 Total:733sqft   Excluded: 0sqft

#		Dimensions	sqft	Counted as living area
13	Bedroom	11'8" x 12'11"	135 sq. ft	Yes
14	Primary Bedroom	13'2" x 14'9"	194 sq. ft	Yes
15	W.I.C.	5'8" x 4'7"	26 sq. ft	Yes
16	Bedroom	10'3" x 12'10"	114 sq. ft	Yes
17	Bath	5'3" x 9'2"	48 sq. ft	Yes
18	Bath	8'9" x 5'3"	46 sq. ft	Yes
19	Hall	10'5" x 4'7"	94 sq. ft	Yes

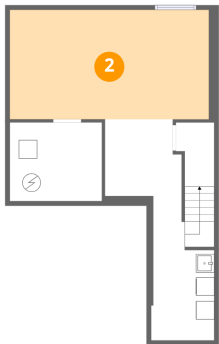
1 Floor 1 - Laundry



Dimensions: 6'10" x 15'9"  
Area: 132 sq. ft  
Counted as living area: No

Heated: Yes  
Finished: No  
Enclosed: Yes  
Contiguous: Yes  
Permitted: Yes  
Wet space: No  
Addition: No  
Conversion: No

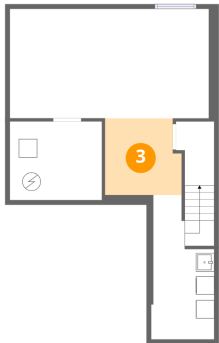
2 Floor 1 - Bedroom



Dimensions: 21'8" x 11'11"  
Area: 259 sq. ft  
Counted as living area: No

Heated: Yes  
Finished: No  
Enclosed: Yes  
Contiguous: Yes  
Permitted: Yes  
Wet space: No  
Addition: No  
Conversion: No

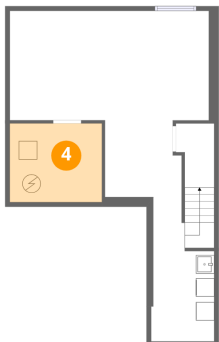
3 Floor 1 - Office



Dimensions: 8'4" x 8'4"  
Area: 66 sq. ft  
Counted as living area: No

Heated: Yes  
Finished: No  
Enclosed: Yes  
Contiguous: Yes  
Permitted: Yes  
Wet space: No  
Addition: No  
Conversion: No

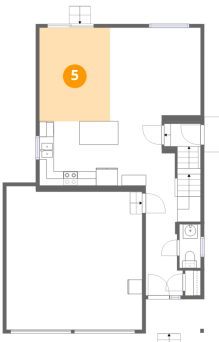
4 Floor 1 - Utility



Dimensions: 10'0" x 8'7"  
Area: 86 sq. ft  
Counted as living area: No

Heated: Yes  
Finished: No  
Enclosed: Yes  
Contiguous: Yes  
Permitted: Yes  
Wet space: No  
Addition: No  
Conversion: No

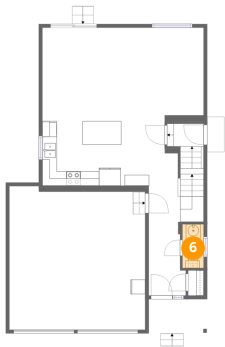
5 Floor 2 - Dining Area



Dimensions: 9'9" x 12'11"  
Area: 126 sq. ft  
Counted as living area: Yes

Heated: Yes  
Finished: Yes  
Enclosed: Yes  
Contiguous: Yes  
Permitted: Yes  
Wet space: No  
Addition: No  
Conversion: No

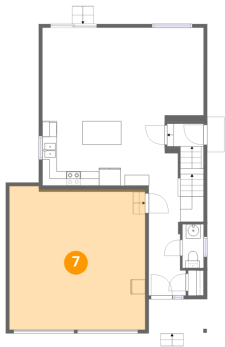
6 Floor 2 - Bath



Dimensions: 2'11" x 6'0"  
Area: 18 sq. ft  
Counted as living area: Yes

Heated: Yes  
Finished: Yes  
Enclosed: Yes  
Contiguous: Yes  
Permitted: Yes  
Wet space: Yes  
Addition: No  
Conversion: No

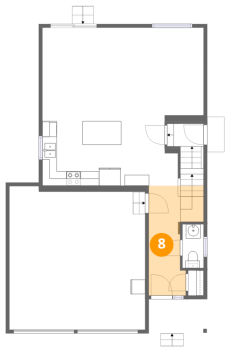
7 Floor 2 - Garage



Dimensions: 18'9" x 19'10"  
Area: 365 sq. ft  
Counted as living area: No

Heated: No  
Finished: No  
Enclosed: Yes  
Contiguous: Yes  
Permitted: Yes  
Wet space: No  
Addition: No  
Conversion: No

8 Floor 2 - Foyer

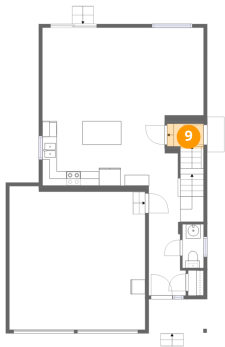


Dimensions: 5'1" x 15'2"  
Area: 84 sq. ft  
Counted as living area: Yes

Heated: Yes  
Finished: Yes  
Enclosed: Yes  
Contiguous: Yes  
Permitted: Yes  
Wet space: No  
Addition: No  
Conversion: No



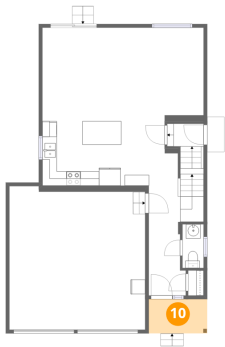
9 Floor 2 - Entry



Dimensions: 4'2" x 3'1"  
Area: 17 sq. ft  
Counted as living area: Yes

Heated: Yes  
Finished: Yes  
Enclosed: Yes  
Contiguous: Yes  
Permitted: Yes  
Wet space: No  
Addition: No  
Conversion: No

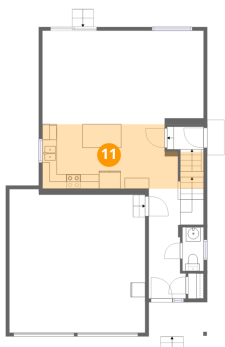
10 Floor 2 - Porch



Dimensions: 8'1" x 4'8"  
Area: 38 sq. ft  
Counted as living area: No

Heated: No  
Finished: No  
Enclosed: No  
Contiguous: Yes  
Permitted: Yes  
Wet space: No  
Addition: No  
Conversion: No

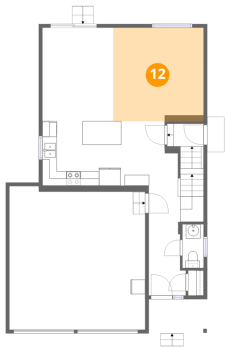
11 Floor 2 - Kitchen



Dimensions: 18'9" x 8'11"  
Area: 176 sq. ft  
Counted as living area: Yes

Heated: Yes  
Finished: Yes  
Enclosed: Yes  
Contiguous: Yes  
Permitted: Yes  
Wet space: No  
Addition: No  
Conversion: No

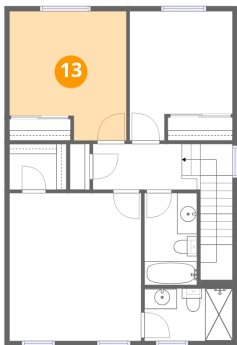
12 Floor 2 - Living Room



Dimensions: 12'6" x 12'11"  
Area: 162 sq. ft  
Counted as living area: Yes

Heated: Yes  
Finished: Yes  
Enclosed: Yes  
Contiguous: Yes  
Permitted: Yes  
Wet space: No  
Addition: No  
Conversion: No

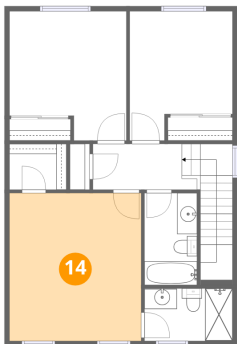
13 Floor 3 - Bedroom



Dimensions: 11'8" x 12'11"  
Area: 135 sq. ft  
Counted as living area: Yes

Heated: Yes  
Finished: Yes  
Enclosed: Yes  
Contiguous: Yes  
Permitted: Yes  
Wet space: No  
Addition: No  
Conversion: No

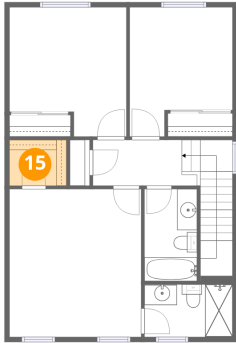
14 Floor 3 - Primary Bedroom



Dimensions: 13'2" x 14'9"  
Area: 194 sq. ft  
Counted as living area: Yes

Heated: Yes  
Finished: Yes  
Enclosed: Yes  
Contiguous: Yes  
Permitted: Yes  
Wet space: No  
Addition: No  
Conversion: No

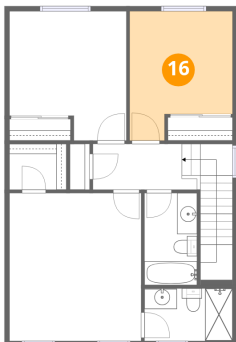
### 15 Floor 3 - W.I.C.



Dimensions: 5'8" x 4'7"  
Area: 26 sq. ft  
Counted as living area: Yes

Heated: Yes  
Finished: Yes  
Enclosed: Yes  
Contiguous: Yes  
Permitted: Yes  
Wet space: No  
Addition: No  
Conversion: No

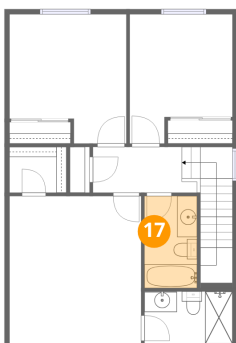
### 16 Floor 3 - Bedroom



Dimensions: 10'3" x 12'10"  
Area: 114 sq. ft  
Counted as living area: Yes

Heated: Yes  
Finished: Yes  
Enclosed: Yes  
Contiguous: Yes  
Permitted: Yes  
Wet space: No  
Addition: No  
Conversion: No

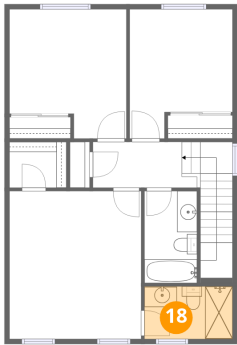
### 17 Floor 3 - Bath



Dimensions: 5'3" x 9'2"  
Area: 48 sq. ft  
Counted as living area: Yes

Heated: Yes  
Finished: Yes  
Enclosed: Yes  
Contiguous: Yes  
Permitted: Yes  
Wet space: Yes  
Addition: No  
Conversion: No

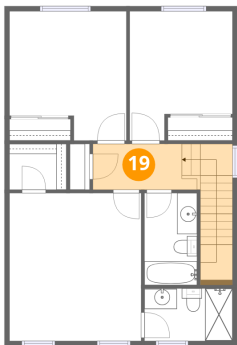
18 Floor 3 - Bath



Dimensions: 8'9" x 5'3"  
Area: 46 sq. ft  
Counted as living area: Yes

Heated: Yes  
Finished: Yes  
Enclosed: Yes  
Contiguous: Yes  
Permitted: Yes  
Wet space: Yes  
Addition: No  
Conversion: No

19 Floor 3 - Hall



Dimensions: 10'5" x 4'7"  
Area: 94 sq. ft  
Counted as living area: Yes

Heated: Yes  
Finished: Yes  
Enclosed: Yes  
Contiguous: Yes  
Permitted: Yes  
Wet space: No  
Addition: No  
Conversion: No