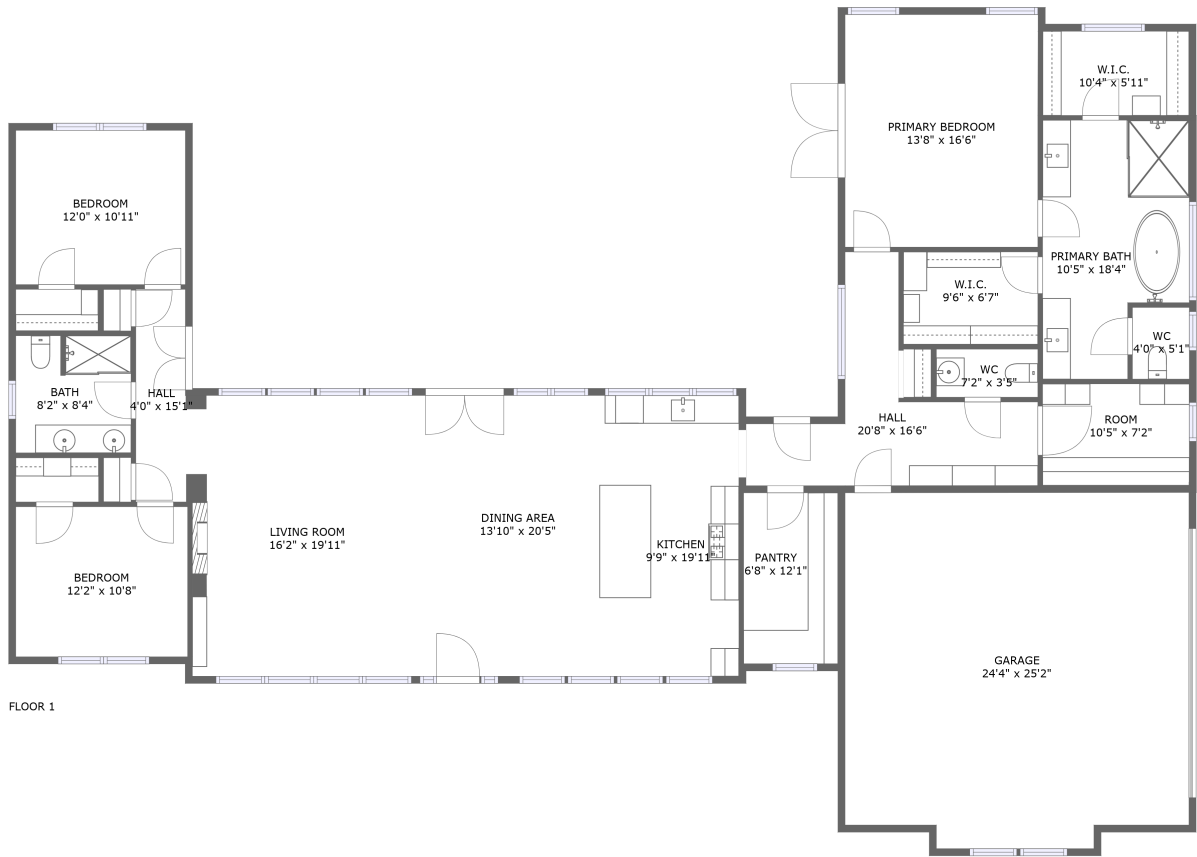


Home report

7315 Sundance Drive North, Joshua, Johnson County, Texas,
United States, 76058




Total Area: 2145 sq. ft

Floor 1: 2145 sq. ft

Excluded: Garage 592 sq. ft, Walls: 184 sq. ft

Property summary

 1 Floors

 3 Bedrooms

 2 Bathrooms

Home report

**7315 Sundance Drive North, Joshua, Johnson County, Texas,
United States, 76058**



1
Half baths



1
Garages

Home report

7315 Sundance Drive North, Joshua, Johnson County, Texas,
United States, 76058



Room dimensions

Floor 1 Total:2145sqft Excluded: 592sqft

#		Max Dimensions	sqft	Included
1	Bedroom	12'0" x 10'11"	131 sq. ft	Yes
2	WC	4'0" x 5'1"	20 sq. ft	Yes
3	Pantry	6'8" x 12'1"	81 sq. ft	Yes
4	Garage	24'4" x 25'2"	592 sq. ft	No
5	Dining Area	13'10" x 20'5"	278 sq. ft	Yes
6	Room	10'5" x 7'2"	75 sq. ft	Yes
7	Bath	8'2" x 8'4"	67 sq. ft	Yes
8	W.I.C.	10'4" x 5'11"	62 sq. ft	Yes
9	W.I.C.	9'6" x 6'7"	62 sq. ft	Yes
10	Living Room	16'2" x 19'11"	316 sq. ft	Yes
11	Primary Bath	10'5" x 18'4"	167 sq. ft	Yes

Home report

**7315 Sundance Drive North, Joshua, Johnson County, Texas,
United States, 76058**

#		Max Dimensions	sqft	Included
12	Bedroom	12'2" x 10'8"	129 sq. ft	Yes
13	Primary Bedroom	13'8" x 16'6"	225 sq. ft	Yes
14	WC	7'2" x 3'5"	24 sq. ft	Yes
15	Kitchen	9'9" x 19'11"	180 sq. ft	Yes
16	Hall	20'8" x 16'6"	152 sq. ft	Yes
17	Hall	4'0" x 15'1"	55 sq. ft	Yes

7315 Sundance Drive North, Joshua, Johnson County, Texas,
United States, 76058

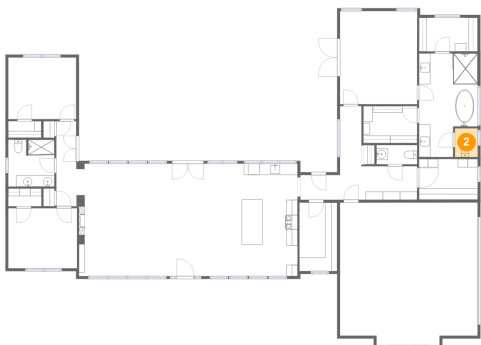
1 Floor 1 - Bedroom



Max Dimensions: 12'0" x 10'11"
Calculated Area: 131 sq. ft
Included: Yes

Heated: Yes
Finished: Yes
Enclosed: Yes
Contiguous: Yes
Permitted: Yes
Wet space: No
Addition: No
Conversion: No

2 Floor 1 - WC

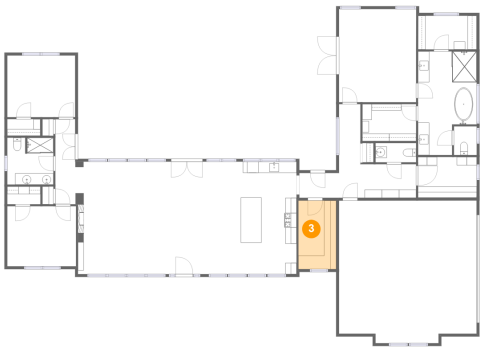


Max Dimensions: 4'0" x 5'1"
Calculated Area: 20 sq. ft
Included: Yes

Heated: Yes
Finished: Yes
Enclosed: Yes
Contiguous: Yes
Permitted: Yes
Wet space: Yes
Addition: No
Conversion: No

7315 Sundance Drive North, Joshua, Johnson County, Texas,
United States, 76058

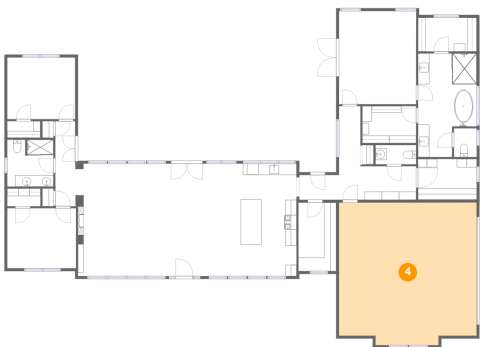
3 Floor 1 - Pantry



Max Dimensions: 6'8" x 12'1"
Calculated Area: 81 sq. ft
Included: Yes

Heated: Yes
Finished: Yes
Enclosed: Yes
Contiguous: Yes
Permitted: Yes
Wet space: No
Addition: No
Conversion: No

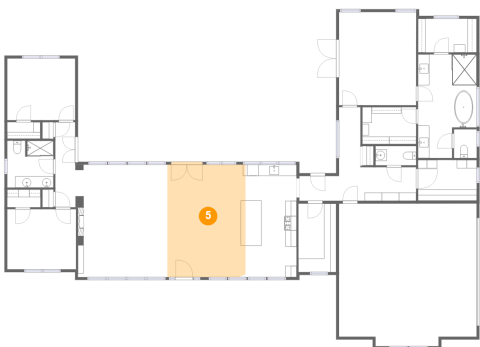
4 Floor 1 - Garage



Max Dimensions: 24'4" x 25'2"
Calculated Area: 592 sq. ft
Included: No

Heated: No
Finished: No
Enclosed: Yes
Contiguous: Yes
Permitted: Yes
Wet space: No
Addition: No
Conversion: No

5 Floor 1 - Dining Area

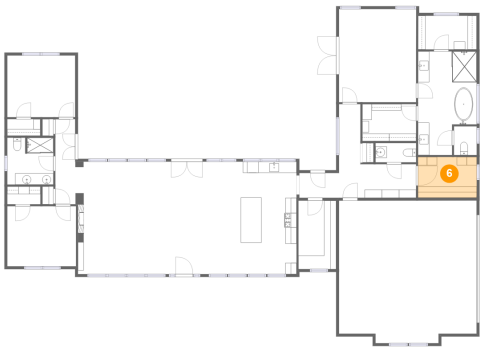


Max Dimensions: 13'10" x 20'5"
Calculated Area: 278 sq. ft
Included: Yes

Heated: Yes
Finished: Yes
Enclosed: Yes
Contiguous: Yes
Permitted: Yes
Wet space: No
Addition: No
Conversion: No

7315 Sundance Drive North, Joshua, Johnson County, Texas,
United States, 76058

6 Floor 1 - Room



Max Dimensions: 10'5" x 7'2"
Calculated Area: 75 sq. ft
Included: Yes

Heated: Yes
Finished: Yes
Enclosed: Yes
Contiguous: Yes
Permitted: Yes
Wet space: No
Addition: No
Conversion: No

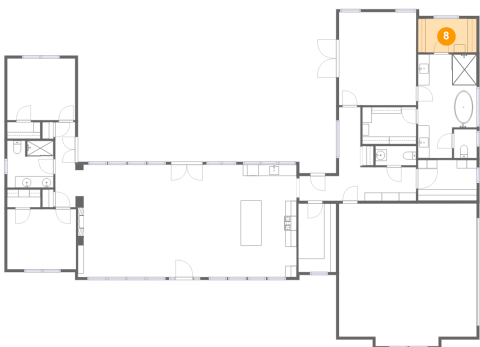
7 Floor 1 - Bath



Max Dimensions: 8'2" x 8'4"
Calculated Area: 67 sq. ft
Included: Yes

Heated: Yes
Finished: Yes
Enclosed: Yes
Contiguous: Yes
Permitted: Yes
Wet space: Yes
Addition: No
Conversion: No

8 Floor 1 - W.I.C.

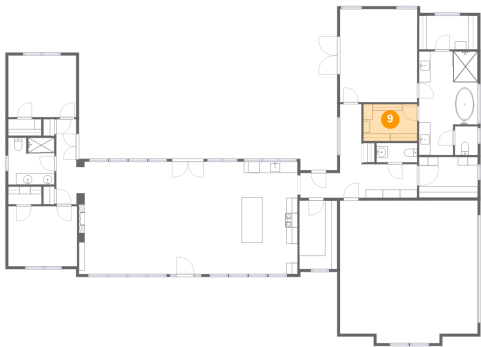


Max Dimensions: 10'4" x 5'11"
Calculated Area: 62 sq. ft
Included: Yes

Heated: Yes
Finished: Yes
Enclosed: Yes
Contiguous: Yes
Permitted: Yes
Wet space: No
Addition: No
Conversion: No

7315 Sundance Drive North, Joshua, Johnson County, Texas,
United States, 76058

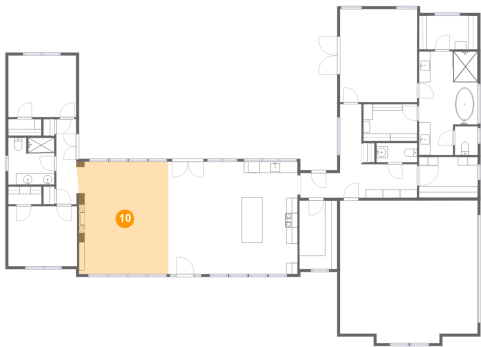
9 Floor 1 - W.I.C.



Max Dimensions: 9'6" x 6'7"
Calculated Area: 62 sq. ft
Included: Yes

Heated: Yes
Finished: Yes
Enclosed: Yes
Contiguous: Yes
Permitted: Yes
Wet space: No
Addition: No
Conversion: No

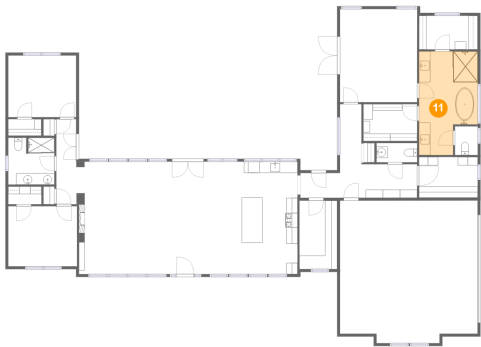
10 Floor 1 - Living Room



Max Dimensions: 16'2" x 19'11"
Calculated Area: 316 sq. ft
Included: Yes

Heated: Yes
Finished: Yes
Enclosed: Yes
Contiguous: Yes
Permitted: Yes
Wet space: No
Addition: No
Conversion: No

11 Floor 1 - Primary Bath



Max Dimensions: 10'5" x 18'4"
Calculated Area: 167 sq. ft
Included: Yes

Heated: Yes
Finished: Yes
Enclosed: Yes
Contiguous: Yes
Permitted: Yes
Wet space: Yes
Addition: No
Conversion: No

7315 Sundance Drive North, Joshua, Johnson County, Texas,
United States, 76058

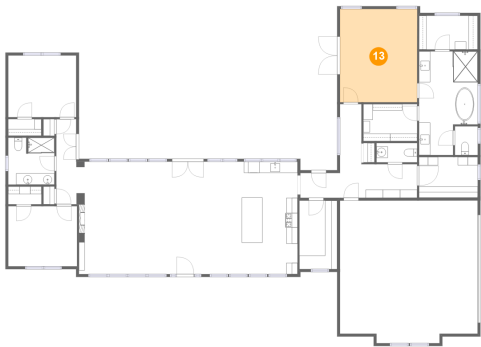
12 Floor 1 - Bedroom



Max Dimensions: 12'2" x 10'8"
Calculated Area: 129 sq. ft
Included: Yes

Heated: Yes
Finished: Yes
Enclosed: Yes
Contiguous: Yes
Permitted: Yes
Wet space: No
Addition: No
Conversion: No

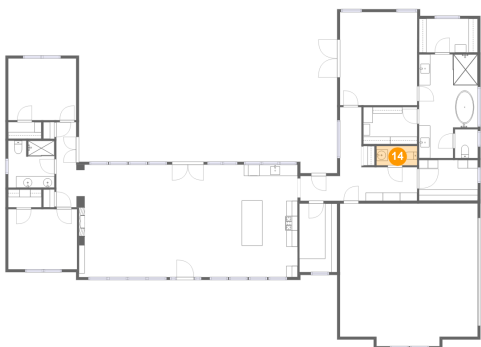
13 Floor 1 - Primary Bedroom



Max Dimensions: 13'8" x 16'6"
Calculated Area: 225 sq. ft
Included: Yes

Heated: Yes
Finished: Yes
Enclosed: Yes
Contiguous: Yes
Permitted: Yes
Wet space: No
Addition: No
Conversion: No

14 Floor 1 - WC

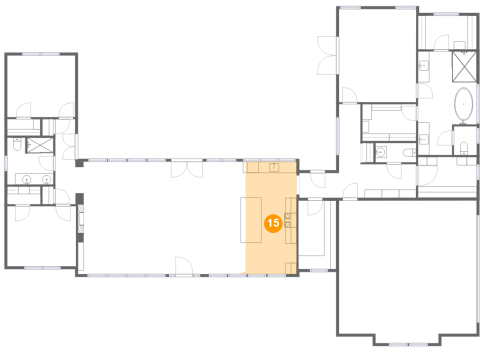


Max Dimensions: 7'2" x 3'5"
Calculated Area: 24 sq. ft
Included: Yes

Heated: Yes
Finished: Yes
Enclosed: Yes
Contiguous: Yes
Permitted: Yes
Wet space: Yes
Addition: No
Conversion: No

7315 Sundance Drive North, Joshua, Johnson County, Texas,
United States, 76058

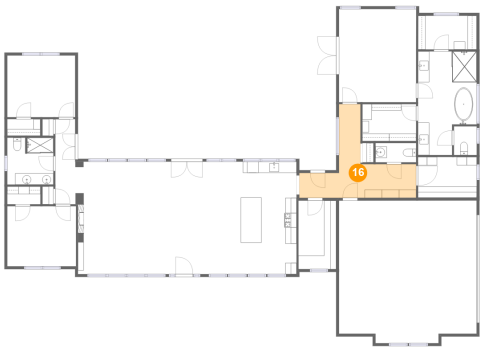
15 Floor 1 - Kitchen



Max Dimensions: 9'9" x 19'11"
Calculated Area: 180 sq. ft
Included: Yes

Heated: Yes
Finished: Yes
Enclosed: Yes
Contiguous: Yes
Permitted: Yes
Wet space: No
Addition: No
Conversion: No

16 Floor 1 - Hall



Max Dimensions: 20'8" x 16'6"
Calculated Area: 152 sq. ft
Included: Yes

Heated: Yes
Finished: Yes
Enclosed: Yes
Contiguous: Yes
Permitted: Yes
Wet space: No
Addition: No
Conversion: No

17 Floor 1 - Hall



Max Dimensions: 4'0" x 15'1"
Calculated Area: 55 sq. ft
Included: Yes

Heated: Yes
Finished: Yes
Enclosed: Yes
Contiguous: Yes
Permitted: Yes
Wet space: No
Addition: No
Conversion: No