



Home report


2737 Russlen Drive, Robin Hood Park, Salem, Roanoke County,  
Virginia, United States, 24153





Property summary


 **1** Garages


 **4** Bedrooms

 **2** Bathrooms

 **1** Half baths

 **3** Floors

 **2,160** Gross living area sqft

 **4,757** Total sqft

Home report

2737 Russlen Drive, Robin Hood Park, Salem, Roanoke County,  
Virginia, United States, 24153



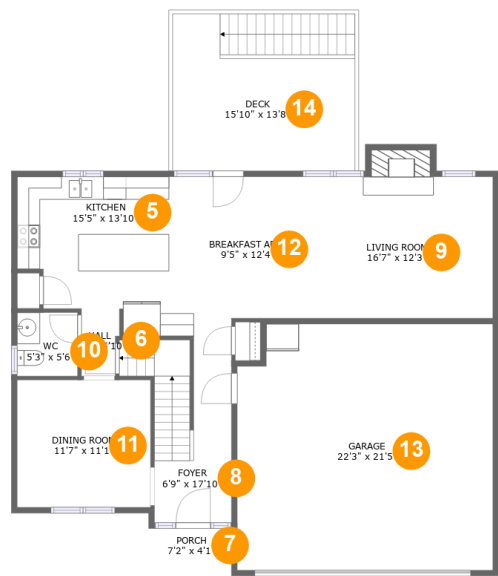
Room dimensions

Floor 1 Total sqft: 1848    Living area: 0

#		Dimensions	sqft	Counted as living area
1	Covered Patio	16'0" x 9'7"	154 sq. ft	No
2	Storage	21'5" x 20'8"	442 sq. ft	No
3	Basement	40'6" x 30'1"	837 sq. ft	No
4	Patio	34'4" x 13'11"	324 sq. ft	No

Home report

2737 Russlen Drive, Robin Hood Park, Salem, Roanoke County,  
Virginia, United States, 24153



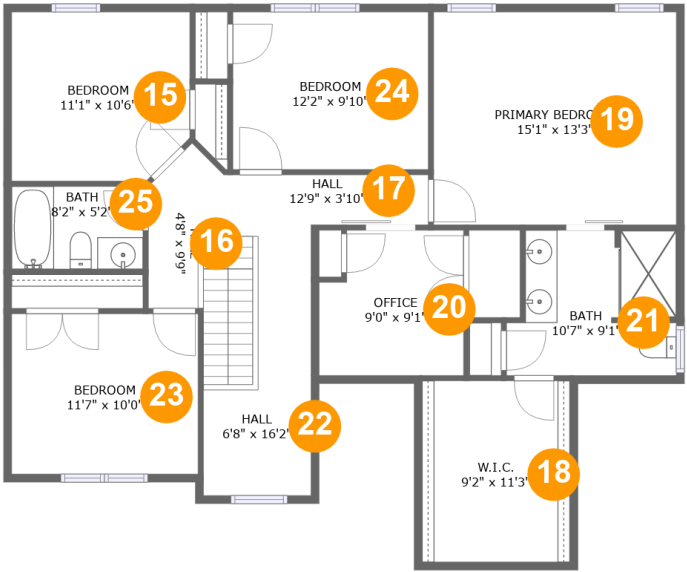
Room dimensions

Floor 2 Total sqft: 1657    Living area: 908

#		Dimensions	sqft	Counted as living area
5	Kitchen	15'5" x 13'10"	184 sq. ft	Yes
6	Hall	3'3" x 5'10"	18 sq. ft	Yes
7	Porch	7'2" x 4'1"	30 sq. ft	No
8	Foyer	6'9" x 17'10"	120 sq. ft	Yes
9	Living Room	16'7" x 12'3"	217 sq. ft	Yes
10	WC	5'3" x 5'6"	29 sq. ft	Yes
11	Dining Room	11'7" x 11'1"	129 sq. ft	Yes
12	Breakfast Area	9'5" x 12'4"	116 sq. ft	Yes
13	Garage	22'3" x 21'5"	468 sq. ft	No
14	Deck	15'10" x 13'8"	213 sq. ft	No

Home report

2737 Russlen Drive, Robin Hood Park, Salem, Roanoke County,  
Virginia, United States, 24153

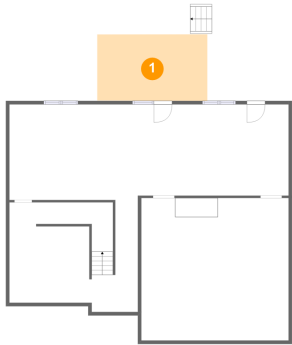


Room dimensions

Floor 3 Total sqft: 1252    Living area: 1252

#		Dimensions	sqft	Counted as living area
15	Bedroom	11'1" x 10'6"	113 sq. ft	Yes
16	Hall	4'8" x 9'9"	37 sq. ft	Yes
17	Hall	12'9" x 3'10"	44 sq. ft	Yes
18	W.I.C.	9'2" x 11'3"	104 sq. ft	Yes
19	Primary Bedroom	15'1" x 13'3"	200 sq. ft	Yes
20	Office	9'0" x 9'1"	76 sq. ft	Yes
21	Bath	10'7" x 9'1"	87 sq. ft	Yes
22	Hall	6'8" x 16'2"	108 sq. ft	Yes
23	Bedroom	11'7" x 10'0"	116 sq. ft	Yes
24	Bedroom	12'2" x 9'10"	119 sq. ft	Yes
25	Bath	8'2" x 5'2"	42 sq. ft	Yes

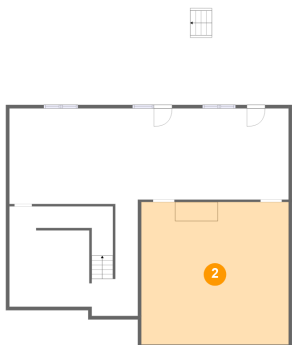
1 Floor 1 - Covered Patio



Dimensions: 16'0" x 9'7"  
Area: 154 sq. ft  
Counted as living area: No

Heated: No  
Finished: Yes  
Enclosed: No  
Contiguous: Yes  
Permitted: Yes  
Wet space: No  
Addition: No  
Conversion: No

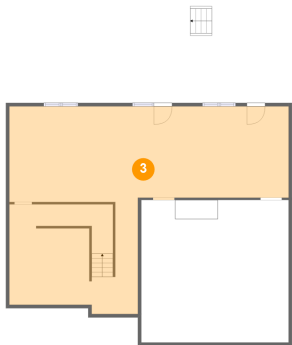
2 Floor 1 - Storage



Dimensions: 21'5" x 20'8"  
Area: 442 sq. ft  
Counted as living area: No

Heated: No  
Finished: No  
Enclosed: No  
Contiguous: Yes  
Permitted: Yes  
Wet space: No  
Addition: No  
Conversion: No

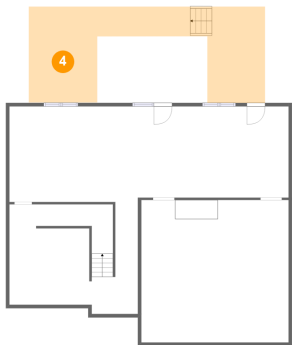
3 Floor 1 - Basement



Dimensions: 40'6" x 30'1"  
Area: 837 sq. ft  
Counted as living area: No

Heated: Yes  
Finished: No  
Enclosed: Yes  
Contiguous: Yes  
Permitted: Yes  
Wet space: No  
Addition: No  
Conversion: No

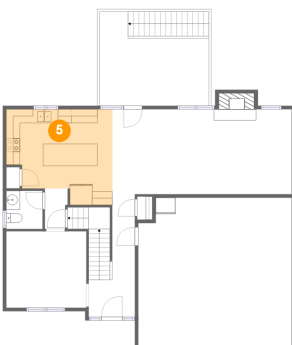
4 Floor 1 - Patio



Dimensions: 34'4" x 13'11"  
Area: 324 sq. ft  
Counted as living area: No

Heated: No  
Finished: Yes  
Enclosed: No  
Contiguous: Yes  
Permitted: Yes  
Wet space: No  
Addition: No  
Conversion: No

5 Floor 2 - Kitchen



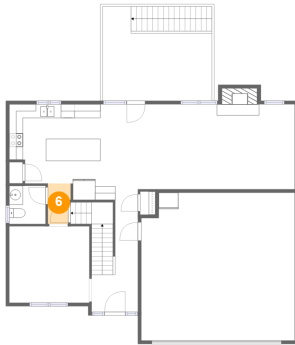
Dimensions: 15'5" x 13'10"  
Area: 184 sq. ft  
Counted as living area: Yes

Heated: Yes  
Finished: Yes  
Enclosed: Yes  
Contiguous: Yes  
Permitted: Yes  
Wet space: No  
Addition: No  
Conversion: No

## Home report

2737 Russlen Drive, Robin Hood Park, Salem, Roanoke County, Virginia, United States, 24153

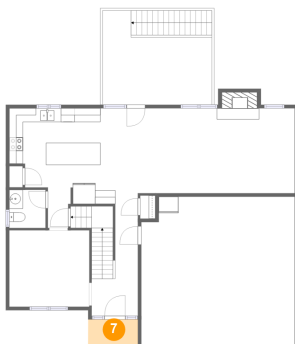
### 6 Floor 2 - Hall



Dimensions: 3'3" x 5'10"  
Area: 18 sq. ft  
Counted as living area: Yes

Heated: Yes  
Finished: Yes  
Enclosed: Yes  
Contiguous: Yes  
Permitted: Yes  
Wet space: No  
Addition: No  
Conversion: No

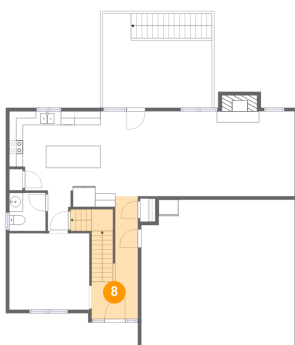
### 7 Floor 2 - Porch



Dimensions: 7'2" x 4'1"  
Area: 30 sq. ft  
Counted as living area: No

Heated: No  
Finished: Yes  
Enclosed: No  
Contiguous: Yes  
Permitted: Yes  
Wet space: No  
Addition: No  
Conversion: No

### 8 Floor 2 - Foyer

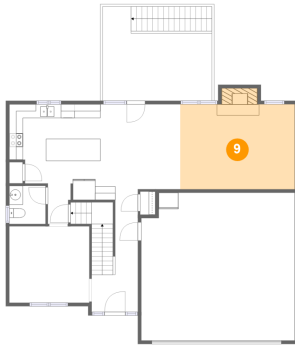


Dimensions: 6'9" x 17'10"  
Area: 120 sq. ft  
Counted as living area: Yes

Heated: Yes  
Finished: Yes  
Enclosed: Yes  
Contiguous: Yes  
Permitted: Yes  
Wet space: No  
Addition: No  
Conversion: No

2737 Russlen Drive, Robin Hood Park, Salem, Roanoke County,  
Virginia, United States, 24153

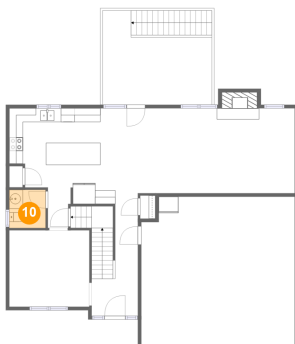
## 9 Floor 2 - Living Room



Dimensions: 16'7" x 12'3"  
Area: 217 sq. ft  
Counted as living area: Yes

Heated: Yes  
Finished: Yes  
Enclosed: Yes  
Contiguous: Yes  
Permitted: Yes  
Wet space: No  
Addition: No  
Conversion: No

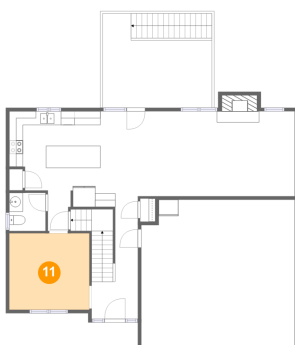
## 10 Floor 2 - WC



Dimensions: 5'3" x 5'6"  
Area: 29 sq. ft  
Counted as living area: Yes

Heated: Yes  
Finished: Yes  
Enclosed: Yes  
Contiguous: Yes  
Permitted: Yes  
Wet space: Yes  
Addition: No  
Conversion: No

## 11 Floor 2 - Dining Room



Dimensions: 11'7" x 11'1"  
Area: 129 sq. ft  
Counted as living area: Yes

Heated: Yes  
Finished: Yes  
Enclosed: Yes  
Contiguous: Yes  
Permitted: Yes  
Wet space: No  
Addition: No  
Conversion: No

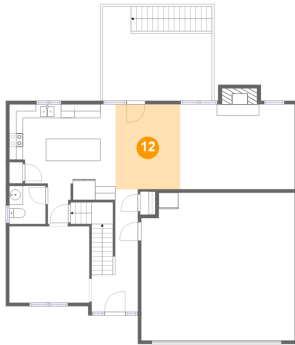


## Home report

2737 Russlen Drive, Robin Hood Park, Salem, Roanoke County, Virginia, United States, 24153

### 12 Floor 2 - Breakfast Area

---

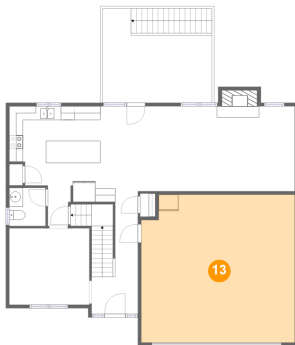


Dimensions: 9'5" x 12'4"  
Area: 116 sq. ft  
Counted as living area: Yes

Heated: Yes  
Finished: Yes  
Enclosed: Yes  
Contiguous: Yes  
Permitted: Yes  
Wet space: No  
Addition: No  
Conversion: No

### 13 Floor 2 - Garage

---

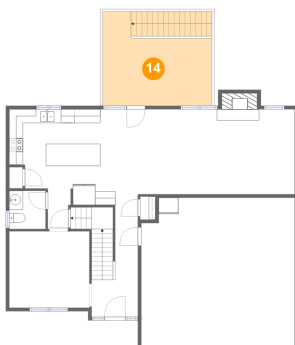


Dimensions: 22'3" x 21'5"  
Area: 468 sq. ft  
Counted as living area: No

Heated: No  
Finished: No  
Enclosed: Yes  
Contiguous: Yes  
Permitted: Yes  
Wet space: No  
Addition: No  
Conversion: No

### 14 Floor 2 - Deck

---



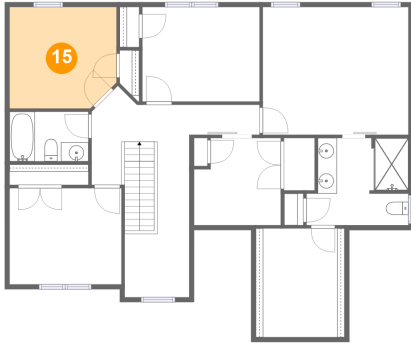
Dimensions: 15'10" x 13'8"  
Area: 213 sq. ft  
Counted as living area: No

Heated: No  
Finished: Yes  
Enclosed: No  
Contiguous: Yes  
Permitted: Yes  
Wet space: No  
Addition: No  
Conversion: No

## Home report

2737 Russlen Drive, Robin Hood Park, Salem, Roanoke County,  
Virginia, United States, 24153

### 15 Floor 3 - Bedroom



Dimensions: 11'1" x 10'6"  
Area: 113 sq. ft  
Counted as living area: Yes

Heated: Yes  
Finished: Yes  
Enclosed: Yes  
Contiguous: Yes  
Permitted: Yes  
Wet space: No  
Addition: No  
Conversion: No

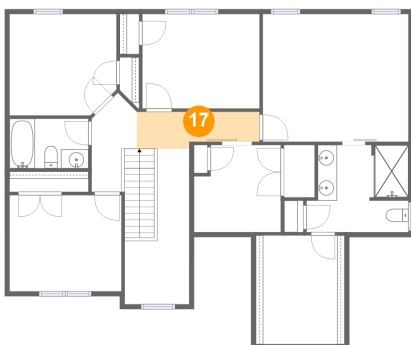
### 16 Floor 3 - Hall



Dimensions: 4'8" x 9'9"  
Area: 37 sq. ft  
Counted as living area: Yes

Heated: Yes  
Finished: Yes  
Enclosed: Yes  
Contiguous: Yes  
Permitted: Yes  
Wet space: No  
Addition: No  
Conversion: No

### 17 Floor 3 - Hall



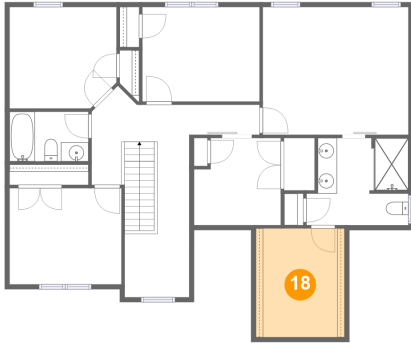
Dimensions: 12'9" x 3'10"  
Area: 44 sq. ft  
Counted as living area: Yes

Heated: Yes  
Finished: Yes  
Enclosed: Yes  
Contiguous: Yes  
Permitted: Yes  
Wet space: No  
Addition: No  
Conversion: No

## Home report

2737 Russlen Drive, Robin Hood Park, Salem, Roanoke County, Virginia, United States, 24153

### 18 Floor 3 - W.I.C.



Dimensions: 9'2" x 11'3"  
Area: 104 sq. ft  
Counted as living area: Yes

Heated: Yes  
Finished: Yes  
Enclosed: Yes  
Contiguous: Yes  
Permitted: Yes  
Wet space: No  
Addition: No  
Conversion: No

### 19 Floor 3 - Primary Bedroom



Dimensions: 15'1" x 13'3"  
Area: 200 sq. ft  
Counted as living area: Yes

Heated: Yes  
Finished: Yes  
Enclosed: Yes  
Contiguous: Yes  
Permitted: Yes  
Wet space: No  
Addition: No  
Conversion: No

### 20 Floor 3 - Office



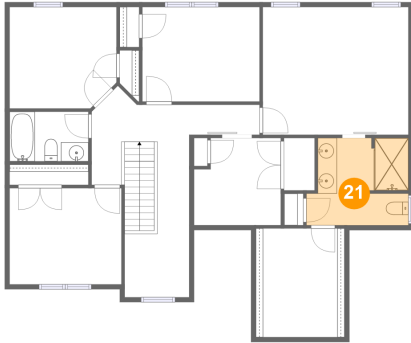
Dimensions: 9'0" x 9'1"  
Area: 76 sq. ft  
Counted as living area: Yes

Heated: Yes  
Finished: Yes  
Enclosed: Yes  
Contiguous: Yes  
Permitted: Yes  
Wet space: No  
Addition: No  
Conversion: No

## Home report

2737 Russlen Drive, Robin Hood Park, Salem, Roanoke County,  
Virginia, United States, 24153

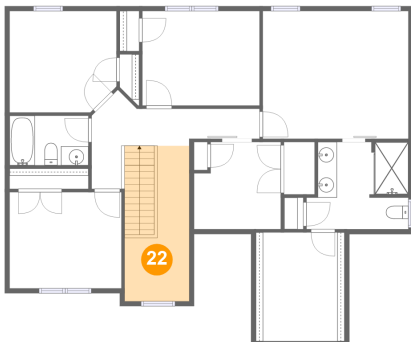
### 21 Floor 3 - Bath



Dimensions: 10'7" x 9'1"  
Area: 87 sq. ft  
Counted as living area: Yes

Heated: Yes  
Finished: Yes  
Enclosed: Yes  
Contiguous: Yes  
Permitted: Yes  
Wet space: Yes  
Addition: No  
Conversion: No

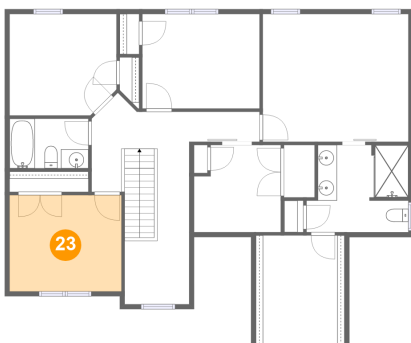
### 22 Floor 3 - Hall



Dimensions: 6'8" x 16'2"  
Area: 108 sq. ft  
Counted as living area: Yes

Heated: Yes  
Finished: Yes  
Enclosed: Yes  
Contiguous: Yes  
Permitted: Yes  
Wet space: No  
Addition: No  
Conversion: No

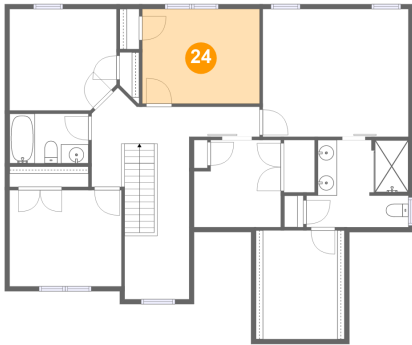
### 23 Floor 3 - Bedroom



Dimensions: 11'7" x 10'0"  
Area: 116 sq. ft  
Counted as living area: Yes

Heated: Yes  
Finished: Yes  
Enclosed: Yes  
Contiguous: Yes  
Permitted: Yes  
Wet space: No  
Addition: No  
Conversion: No

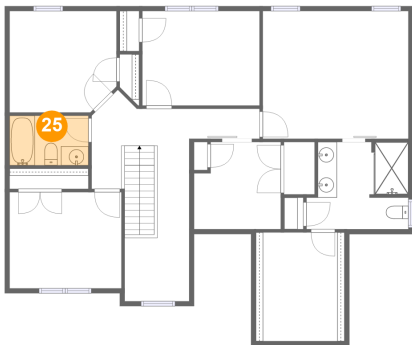
24 Floor 3 - Bedroom



Dimensions: 12'2" x 9'10"  
Area: 119 sq. ft  
Counted as living area: Yes

Heated: Yes  
Finished: Yes  
Enclosed: Yes  
Contiguous: Yes  
Permitted: Yes  
Wet space: No  
Addition: No  
Conversion: No

25 Floor 3 - Bath



Dimensions: 8'2" x 5'2"  
Area: 42 sq. ft  
Counted as living area: Yes

Heated: Yes  
Finished: Yes  
Enclosed: Yes  
Contiguous: Yes  
Permitted: Yes  
Wet space: Yes  
Addition: No  
Conversion: No