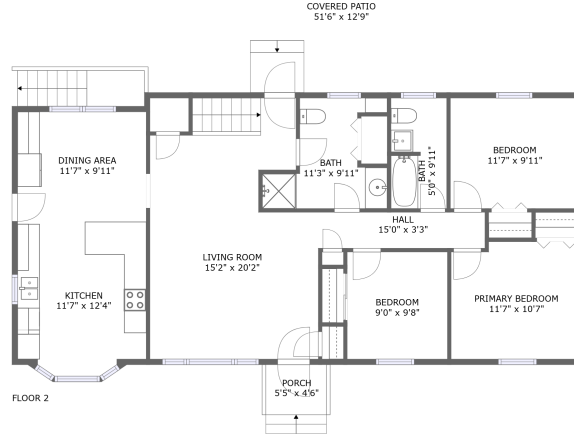



2823 Sample Avenue Southeast, Garden City, Roanoke, Roanoke, Virginia, United States,



Property Summary

 **0** garages

 **5** bedrooms

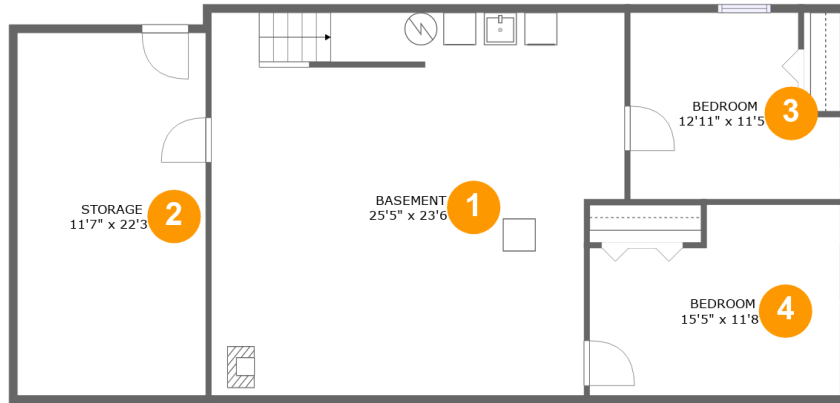
 **2** bathrooms

 **0** half baths

 **2** floors

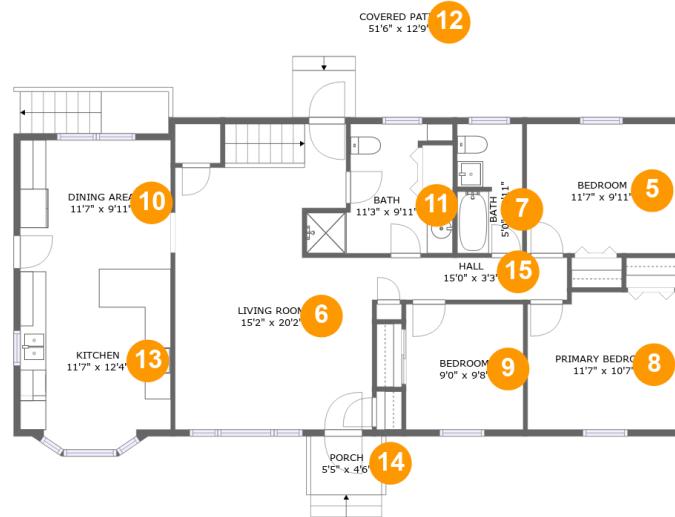
 **2,021** Gross Living Area sqft

 **3,205** total sqft

**2823 Sample Avenue Southeast, Garden City,
Roanoke, Roanoke, Virginia, United States,****Room Dimensions****Floor 1****Total sqft: 1248****Living area: 773**

#	Room name	Dimensions	Area (sqft)	Counted as Living Area
1	Basement	25'5" x 23'6"	566 sq. ft	Yes
2	Storage	11'7" x 22'3"	258 sq. ft	No
3	Bedroom	12'11" x 11'5"	131 sq. ft	Yes
4	Bedroom	15'5" x 11'8"	161 sq. ft	No

2823 Sample Avenue Southeast, Garden City, Roanoke, Roanoke, Virginia, United States,



Room Dimensions

Floor 2

Total sqft: 1957

Living area: 1248

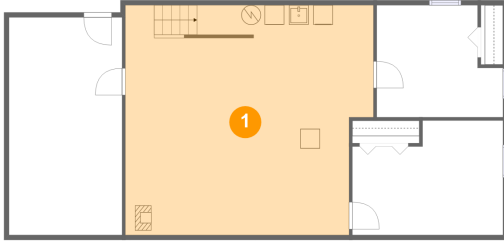
#	Room name	Dimensions	Area (sqft)	Counted as Living Area
5	Bedroom	11'7" x 9'11"	115 sq. ft	Yes
6	Living Room	15'2" x 20'2"	310 sq. ft	Yes
7	Bath	5'0" x 9'11"	49 sq. ft	Yes
8	Primary Bedroom	11'7" x 10'7"	119 sq. ft	Yes
9	Bedroom	9'0" x 9'8"	87 sq. ft	Yes
10	Dining Area	11'7" x 9'11"	115 sq. ft	Yes
11	Bath	11'3" x 9'11"	76 sq. ft	Yes
12	Covered Patio	51'6" x 12'9"	674 sq. ft	No
13	Kitchen	11'7" x 12'4"	143 sq. ft	Yes
14	Porch	5'5" x 4'6"	25 sq. ft	No
15	Hall	15'0" x 3'3"	49 sq. ft	Yes

Scan captured on Mon, 26 Aug 2024 20:21:38 GMT

Information is calculated by CubiCasa technology; deemed highly reliable but not guaranteed.

2823 Sample Avenue Southeast, Garden City, Roanoke, Roanoke, Virginia, United States,

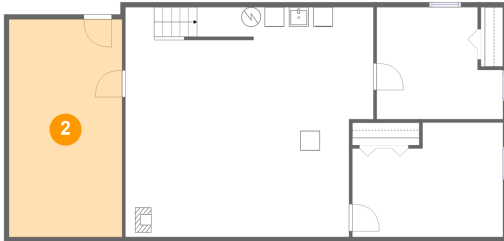
1 Floor 1 - Basement



Dimensions: 25'5" x 23'6"
Area: 566 sq. ft
Counted as Living Area:
Yes

Heated: Yes
Finished: Yes
Enclosed: Yes
Contiguous:
Yes
Permitted: Yes
Wet Space: No
Addition: No
Conversion: No

2 Floor 1 - Storage

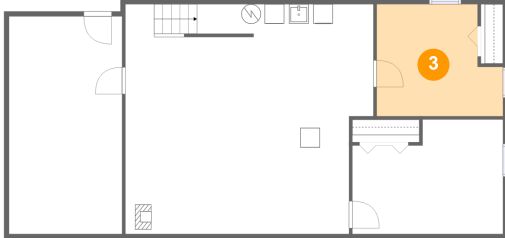


Dimensions: 11'7" x 22'3"
Area: 258 sq. ft
Counted as Living Area: No

Heated: No
Finished: No
Enclosed: No
Contiguous: Yes
Permitted: Yes
Wet Space: No
Addition: No
Conversion: No

**2823 Sample Avenue Southeast, Garden City,
Roanoke, Roanoke, Virginia, United States,**

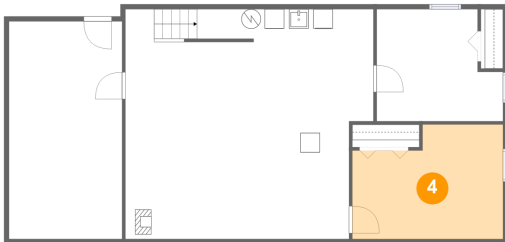
3 Floor 1 - Bedroom



Dimensions: 12'11" x 11'5"
Area: 131 sq. ft
Counted as Living Area:
Yes

Heated: Yes
Finished: Yes
Enclosed: Yes
Contiguous:
Yes
Permitted: Yes
Wet Space: No
Addition: No
Conversion: No

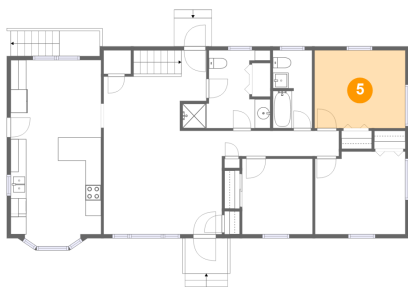
4 Floor 1 - Bedroom



Dimensions: 15'5" x 11'8"
Area: 161 sq. ft
Counted as Living Area: No

Heated: Yes
Finished: Yes
Enclosed: Yes
Contiguous: Yes
Permitted: Yes
Wet Space: No
Addition: No
Conversion: No

5 Floor 2 - Bedroom

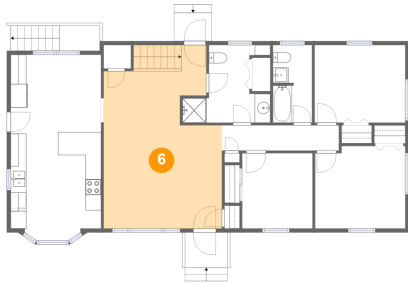


Dimensions: 11'7" x 9'11"
Area: 115 sq. ft
Counted as Living Area:
Yes

Heated: Yes
Finished: Yes
Enclosed: Yes
Contiguous:
Yes
Permitted: Yes
Wet Space: No
Addition: No
Conversion: No

2823 Sample Avenue Southeast, Garden City, Roanoke, Roanoke, Virginia, United States,

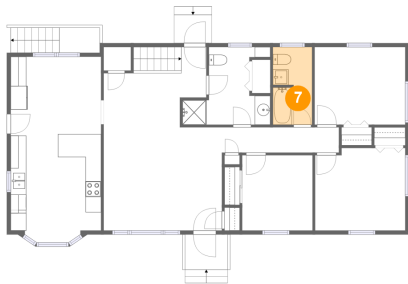
6 Floor 2 - Living Room



Dimensions: 15'2" x 20'2"
Area: 310 sq. ft
Counted as Living Area:
Yes

Heated: Yes
Finished: Yes
Enclosed: Yes
Contiguous:
Yes
Permitted: Yes
Wet Space: No
Addition: No
Conversion: No

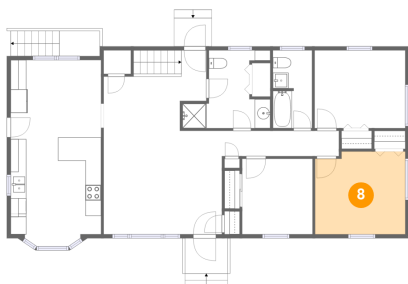
7 Floor 2 - Bath



Dimensions: 5'0" x 9'11"
Area: 49 sq. ft
Counted as Living Area:
Yes

Heated: Yes
Finished: Yes
Enclosed: Yes
Contiguous:
Yes
Permitted: Yes
Wet Space: Yes
Addition: No
Conversion: No

8 Floor 2 - Primary Bedroom

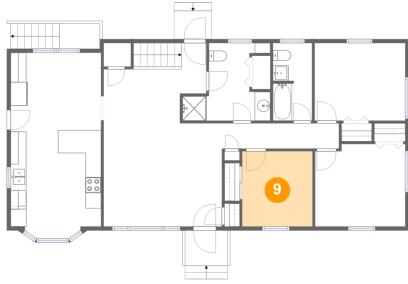


Dimensions: 11'7" x 10'7"
Area: 119 sq. ft
Counted as Living Area:
Yes

Heated: Yes
Finished: Yes
Enclosed: Yes
Contiguous:
Yes
Permitted: Yes
Wet Space: No
Addition: No
Conversion: No

2823 Sample Avenue Southeast, Garden City, Roanoke, Roanoke, Virginia, United States,

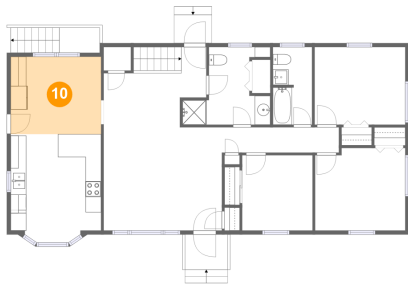
9 Floor 2 - Bedroom



Dimensions: 9'0" x 9'8"
Area: 87 sq. ft
Counted as Living Area:
Yes

Heated: Yes
Finished: Yes
Enclosed: Yes
Contiguous:
Yes
Permitted: Yes
Wet Space: No
Addition: No
Conversion: No

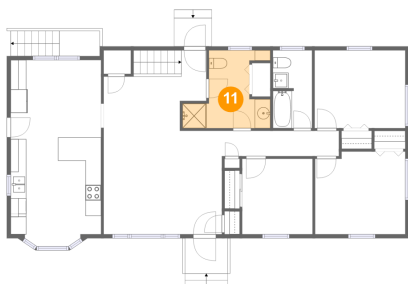
10 Floor 2 - Dining Area



Dimensions: 11'7" x 9'11"
Area: 115 sq. ft
Counted as Living Area:
Yes

Heated: Yes
Finished: Yes
Enclosed: Yes
Contiguous:
Yes
Permitted: Yes
Wet Space: No
Addition: No
Conversion: No

11 Floor 2 - Bath

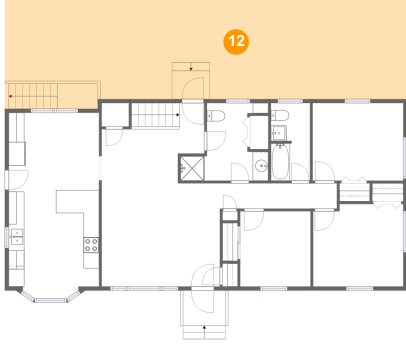


Dimensions: 11'3" x 9'11"
Area: 76 sq. ft
Counted as Living Area:
Yes

Heated: Yes
Finished: Yes
Enclosed: Yes
Contiguous:
Yes
Permitted: Yes
Wet Space: Yes
Addition: No
Conversion: No

2823 Sample Avenue Southeast, Garden City, Roanoke, Roanoke, Virginia, United States,

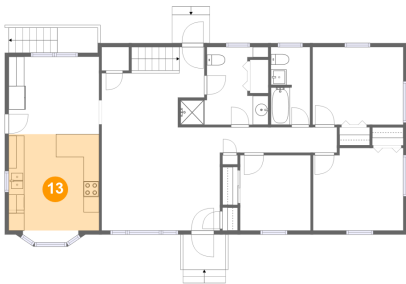
12 Floor 2 - Covered Patio



Dimensions: 51'6" x 12'9"
Area: 674 sq. ft
Counted as Living Area: No

Heated: No
Finished: Yes
Enclosed: No
Contiguous: Yes
Permitted: Yes
Wet Space: No
Addition: No
Conversion: No

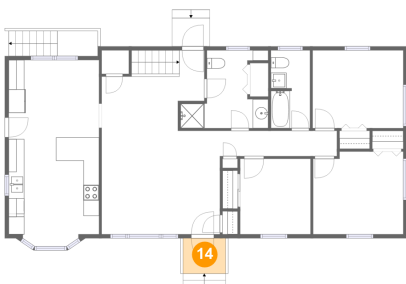
13 Floor 2 - Kitchen



Dimensions: 11'7" x 12'4"
Area: 143 sq. ft
Counted as Living Area:
Yes

Heated: Yes
Finished: Yes
Enclosed: Yes
Contiguous:
Yes
Permitted: Yes
Wet Space: No
Addition: No
Conversion: No

14 Floor 2 - Porch

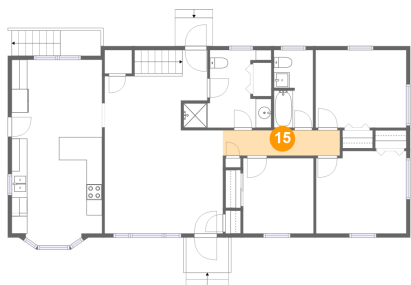


Dimensions: 5'5" x 4'6"
Area: 25 sq. ft
Counted as Living Area: No

Heated: No
Finished: Yes
Enclosed: No
Contiguous: Yes
Permitted: Yes
Wet Space: No
Addition: No
Conversion: No

2823 Sample Avenue Southeast, Garden City, Roanoke, Roanoke, Virginia, United States,

15 Floor 2 - Hall



Dimensions: 15'0" x 3'3"
Area: 49 sq. ft
Counted as Living Area:
Yes

Heated: Yes
Finished: Yes
Enclosed: Yes
Contiguous:
Yes
Permitted: Yes
Wet Space: No
Addition: No
Conversion: No