

Home data report

1490 Green Ave,Glenshaw,PA,US



Total Area: 1779 sq. ft

Below Ground: 482 sq. ft, 1st Floor: 825 sq. ft, 2nd Floor: 472 sq. ft

Excluded: Storage 108 sq. ft, Garage 262 sq. ft, Porch 63 sq. ft, Deck 238 sq. ft, Low ceiling 7 sq. ft, Walls: 190 sq. ft

Property summary

 **3** Floors

 **3** Bedrooms

 **1** Bathrooms

Home data report

**1490 Green Ave,Glenshaw,PA,US**



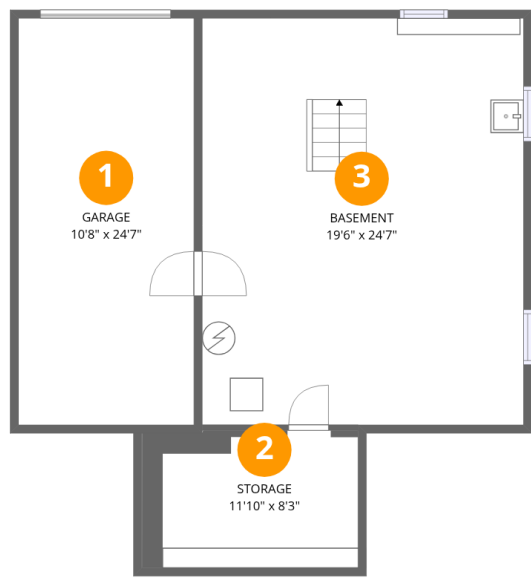
**1**  
Half baths



**1**  
Garages

Home data report

1490 Green Ave,Glenshaw,PA,US



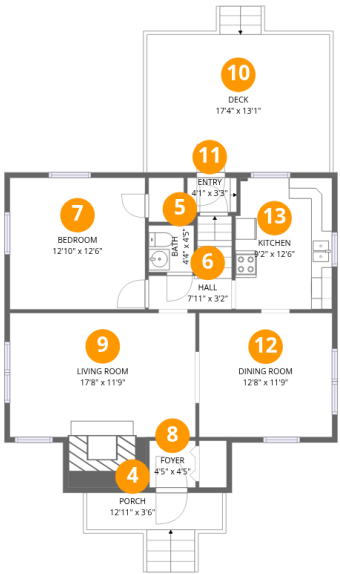
Room dimensions

Floor 1 Below grade Total:482sqft Excluded: 370sqft

#		Dimensions	sqft	Counted as living area
1	Garage	10'8" x 24'7"	262 sq. ft	No
2	Storage	11'10" x 8'3"	108 sq. ft	No
3	Basement	19'6" x 24'7"	479 sq. ft	Yes

Home data report

1490 Green Ave,Glenshaw,PA,US



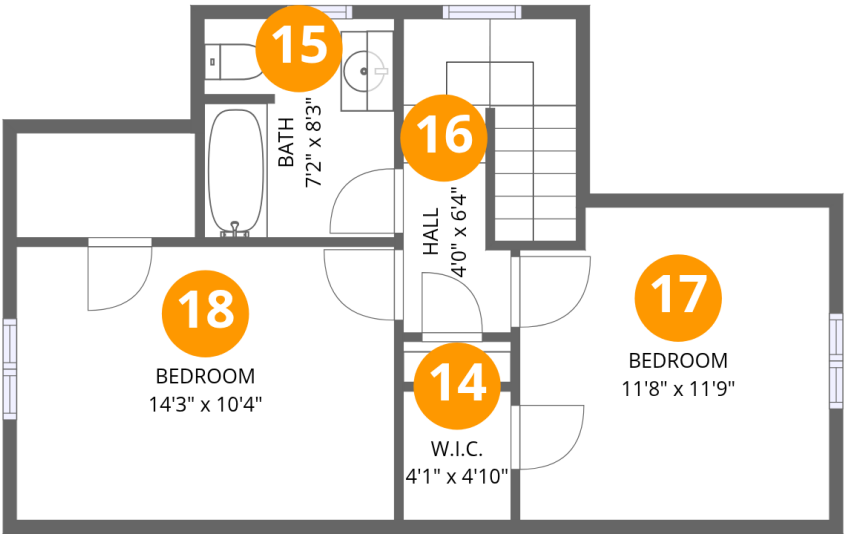
Room dimensions

Floor 2 Total:825sqft Excluded: 301sqft

#		Dimensions	sqft	Counted as living area
4	Porch	12'11" x 3'6"	63 sq. ft	No
5	Bath	4'4" x 4'5"	19 sq. ft	Yes
6	Hall	7'11" x 3'2"	44 sq. ft	Yes
7	Bedroom	12'10" x 12'6"	160 sq. ft	Yes
8	Foyer	4'5" x 4'5"	19 sq. ft	Yes
9	Living Room	17'8" x 11'9"	243 sq. ft	Yes
10	Deck	17'4" x 13'1"	238 sq. ft	No
11	Entry	4'1" x 3'3"	16 sq. ft	Yes
12	Dining Room	12'8" x 11'9"	149 sq. ft	Yes
13	Kitchen	9'2" x 12'6"	113 sq. ft	Yes

Home data report

1490 Green Ave,Glenshaw,PA,US

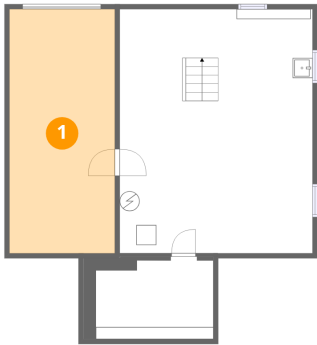


Room dimensions

Floor 3 Total:472sqft Excluded: 7sqft

#		Dimensions	sqft	Counted as living area
14	W.I.C.	4'1" x 4'10"	20 sq. ft	Yes
15	Bath	7'2" x 8'3"	58 sq. ft	Yes
16	Hall	4'0" x 6'4"	66 sq. ft	Yes
17	Bedroom	11'8" x 11'9"	133 sq. ft	Yes
18	Bedroom	14'3" x 10'4"	146 sq. ft	Yes

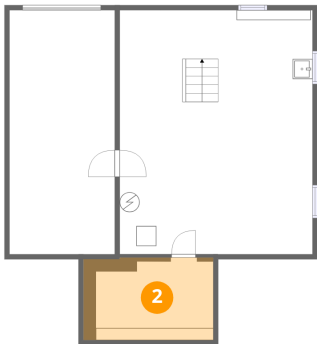
1 Floor 1 - Garage



Dimensions: 10'8" x 24'7"  
Area: 262 sq. ft  
Counted as living area: No

Heated: No  
Finished: No  
Enclosed: Yes  
Contiguous: Yes  
Permitted: Yes  
Wet space: No  
Addition: No  
Conversion: No

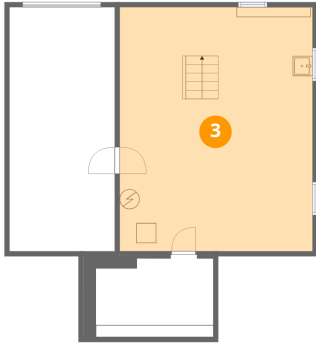
2 Floor 1 - Storage



Dimensions: 11'10" x 8'3"  
Area: 108 sq. ft  
Counted as living area: No

Heated: No  
Finished: No  
Enclosed: No  
Contiguous: Yes  
Permitted: Yes  
Wet space: No  
Addition: No  
Conversion: No

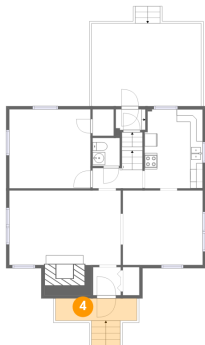
### 3 Floor 1 - Basement



Dimensions: 19'6" x 24'7"  
Area: 479 sq. ft  
Counted as living area: No

Heated: Yes  
Finished: Yes  
Enclosed: Yes  
Contiguous: No  
Permitted: Yes  
Wet space: No  
Addition: No  
Conversion: No

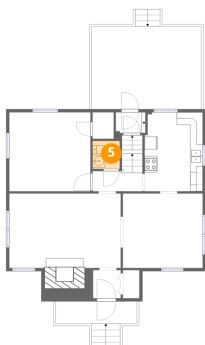
### 4 Floor 2 - Porch



Dimensions: 12'11" x 3'6"  
Area: 63 sq. ft  
Counted as living area: No

Heated: No  
Finished: No  
Enclosed: No  
Contiguous: Yes  
Permitted: Yes  
Wet space: No  
Addition: No  
Conversion: No

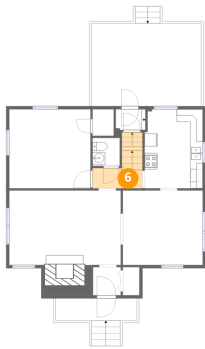
### 5 Floor 2 - Bath



Dimensions: 4'4" x 4'5"  
Area: 19 sq. ft  
Counted as living area: Yes

Heated: Yes  
Finished: Yes  
Enclosed: Yes  
Contiguous: Yes  
Permitted: Yes  
Wet space: Yes  
Addition: No  
Conversion: No

6 Floor 2 - Hall



Dimensions: 7'11" x 3'2"  
Area: 44 sq. ft  
Counted as living area: Yes

Heated: Yes  
Finished: Yes  
Enclosed: Yes  
Contiguous: Yes  
Permitted: Yes  
Wet space: No  
Addition: No  
Conversion: No

7 Floor 2 - Bedroom



Dimensions: 12'10" x 12'6"  
Area: 160 sq. ft  
Counted as living area: Yes

Heated: Yes  
Finished: Yes  
Enclosed: Yes  
Contiguous: Yes  
Permitted: Yes  
Wet space: No  
Addition: No  
Conversion: No

8 Floor 2 - Foyer



Dimensions: 4'5" x 4'5"  
Area: 19 sq. ft  
Counted as living area: Yes

Heated: Yes  
Finished: Yes  
Enclosed: Yes  
Contiguous: Yes  
Permitted: Yes  
Wet space: No  
Addition: No  
Conversion: No



9 Floor 2 - Living Room



Dimensions: 17'8" x 11'9"  
Area: 243 sq. ft  
Counted as living area: Yes

Heated: Yes  
Finished: Yes  
Enclosed: Yes  
Contiguous: Yes  
Permitted: Yes  
Wet space: No  
Addition: No  
Conversion: No

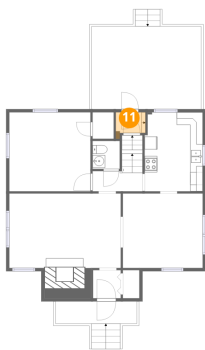
10 Floor 2 - Deck



Dimensions: 17'4" x 13'1"  
Area: 238 sq. ft  
Counted as living area: No

Heated: No  
Finished: No  
Enclosed: No  
Contiguous: Yes  
Permitted: Yes  
Wet space: No  
Addition: No  
Conversion: No

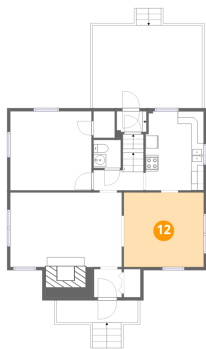
11 Floor 2 - Entry



Dimensions: 4'1" x 3'3"  
Area: 16 sq. ft  
Counted as living area: Yes

Heated: Yes  
Finished: Yes  
Enclosed: Yes  
Contiguous: Yes  
Permitted: Yes  
Wet space: No  
Addition: No  
Conversion: No

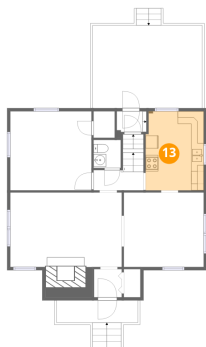
## 12 Floor 2 - Dining Room



Dimensions: 12'8" x 11'9"  
Area: 149 sq. ft  
Counted as living area: Yes

Heated: Yes  
Finished: Yes  
Enclosed: Yes  
Contiguous: Yes  
Permitted: Yes  
Wet space: No  
Addition: No  
Conversion: No

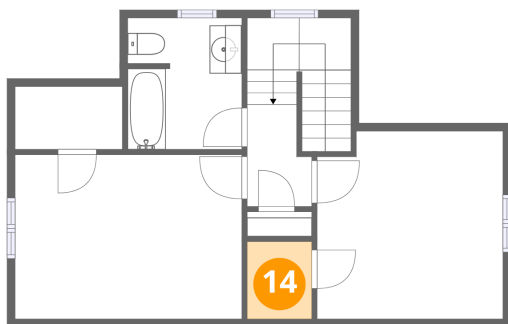
## 13 Floor 2 - Kitchen



Dimensions: 9'2" x 12'6"  
Area: 113 sq. ft  
Counted as living area: Yes

Heated: Yes  
Finished: Yes  
Enclosed: Yes  
Contiguous: Yes  
Permitted: Yes  
Wet space: No  
Addition: No  
Conversion: No

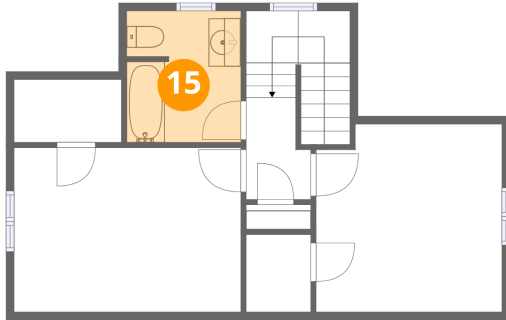
## 14 Floor 3 - W.I.C.



Dimensions: 4'1" x 4'10"  
Area: 20 sq. ft  
Counted as living area: Yes

Heated: Yes  
Finished: Yes  
Enclosed: Yes  
Contiguous: Yes  
Permitted: Yes  
Wet space: No  
Addition: No  
Conversion: No

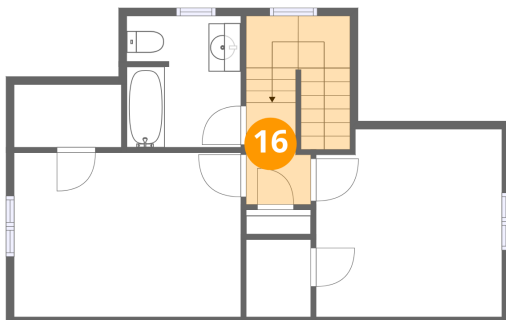
### 15 Floor 3 - Bath



Dimensions: 7'2" x 8'3"  
Area: 58 sq. ft  
Counted as living area: Yes

Heated: Yes  
Finished: Yes  
Enclosed: Yes  
Contiguous: Yes  
Permitted: Yes  
Wet space: Yes  
Addition: No  
Conversion: No

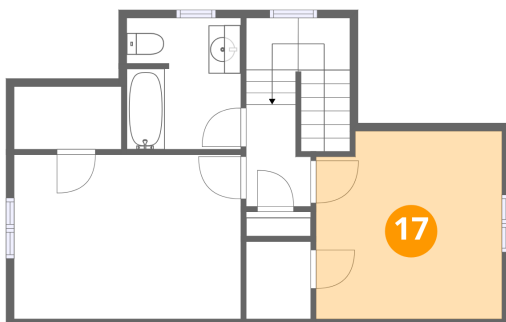
### 16 Floor 3 - Hall



Dimensions: 4'0" x 6'4"  
Area: 66 sq. ft  
Counted as living area: Yes

Heated: Yes  
Finished: Yes  
Enclosed: Yes  
Contiguous: Yes  
Permitted: Yes  
Wet space: No  
Addition: No  
Conversion: No

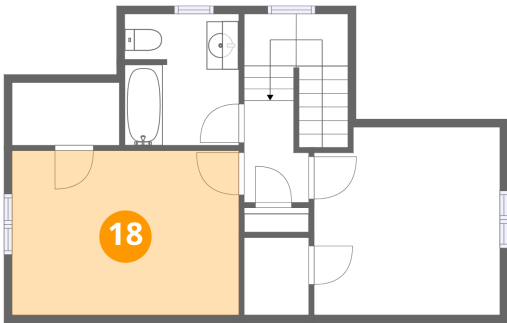
### 17 Floor 3 - Bedroom



Dimensions: 11'8" x 11'9"  
Area: 133 sq. ft  
Counted as living area: Yes

Heated: Yes  
Finished: Yes  
Enclosed: Yes  
Contiguous: Yes  
Permitted: Yes  
Wet space: No  
Addition: No  
Conversion: No

18 Floor 3 - Bedroom



Dimensions: 14'3" x 10'4"  
Area: 146 sq. ft  
Counted as living area: Yes

Heated: Yes  
Finished: Yes  
Enclosed: Yes  
Contiguous: Yes  
Permitted: Yes  
Wet space: No  
Addition: No  
Conversion: No