

 **1**
Garages



5 Bedrooms



5 Bathrooms



1 Half baths



2 Floors

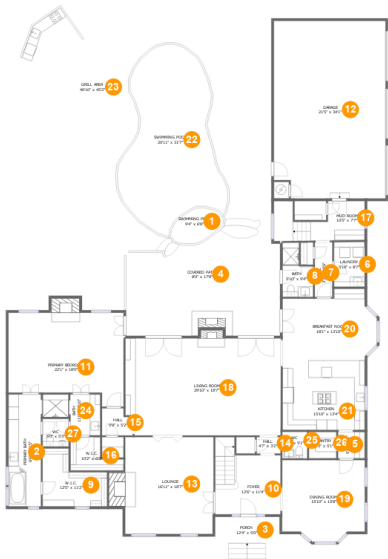


5,329
Gross living
area sqft



8,550
Total sqft

6475 Glendora Avenue, Preston Hollow, Dallas, Dallas
County, Texas, United States, 75230



Room dimensions

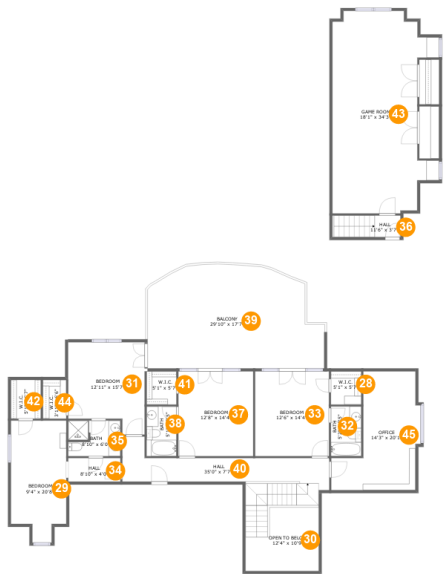
Floor 1 Total sqft: 5673 Living area: 3108

#		Dimensions	sqft	Counted as living area
1	Swimming Pool	9'4" x 6'8"	49 sq. ft	No
2	Primary Bath	6'6" x 21'5"	135 sq. ft	Yes
3	Porch	12'4" x 5'0"	55 sq. ft	No
4	Covered Patio	8'0" x 17'8"	512 sq. ft	No
5	Hall	5'1" x 5'1"	26 sq. ft	Yes
6	Laundry	5'10" x 8'7"	51 sq. ft	Yes
7	Hall	3'3" x 10'6"	35 sq. ft	Yes
8	Bath	5'10" x 9'4"	49 sq. ft	Yes
9	W.I.C.	12'5" x 11'2"	104 sq. ft	Yes
10	Foyer	12'6" x 11'4"	155 sq. ft	Yes
11	Primary Bedroom	22'1" x 18'0"	365 sq. ft	Yes

**6475 Glendora Avenue, Preston Hollow, Dallas, Dallas
County, Texas, United States, 75230**

#		Dimensions	sqft	Counted as living area
12	Garage	21'5" x 34'1"	720 sq. ft	No
13	Lounge	16'11" x 18'7"	335 sq. ft	Yes
14	Hall	4'7" x 3'2"	14 sq. ft	Yes
15	Hall	5'9" x 5'2"	28 sq. ft	Yes
16	W.I.C.	10'2" x 6'5"	46 sq. ft	Yes
17	Mud Room	10'5" x 7'7"	106 sq. ft	Yes
18	Living Room	29'10" x 18'7"	557 sq. ft	Yes
19	Dining Room	15'10" x 15'8"	231 sq. ft	Yes
20	Breakfast Nook	18'1" x 13'10"	216 sq. ft	Yes
21	Kitchen	15'10" x 13'4"	211 sq. ft	Yes
22	Swimming Pool	20'11" x 31'7"	513 sq. ft	No
23	Grill Area	46'10" x 45'2"	1756 sq. ft	No
24	Bath	11'0" x 7'10"	68 sq. ft	Yes
25	WC	4'9" x 5'1"	24 sq. ft	Yes
26	Pantry	5'3" x 5'1"	27 sq. ft	Yes
27	WC	5'0" x 5'3"	27 sq. ft	Yes

6475 Glendora Avenue, Preston Hollow, Dallas, Dallas
County, Texas, United States, 75230



Room dimensions

Floor 2 Total sqft: 2877 Living area: 2221

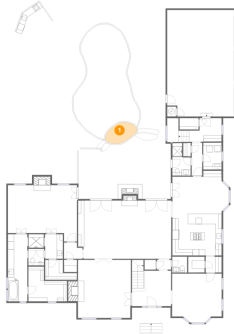
#		Dimensions	sqft	Counted as living area
28	W.I.C.	5'1" x 5'7"	29 sq. ft	Yes
29	Bedroom	9'4" x 20'8"	174 sq. ft	Yes
30	Open To Below	12'4" x 10'9"	113 sq. ft	No
31	Bedroom	12'11" x 15'7"	177 sq. ft	Yes
32	Bath	5'2" x 8'5"	43 sq. ft	Yes
33	Bedroom	12'6" x 14'4"	179 sq. ft	Yes
34	Hall	8'10" x 4'0"	35 sq. ft	Yes
35	Bath	8'10" x 6'0"	51 sq. ft	Yes
36	Hall	11'6" x 3'7"	42 sq. ft	Yes
37	Bedroom	12'8" x 14'4"	181 sq. ft	Yes
38	Bath	5'1" x 8'5"	42 sq. ft	Yes

**6475 Glendora Avenue, Preston Hollow, Dallas, Dallas
County, Texas, United States, 75230**

#		Dimensions	sqft	Counted as living area
39	Balcony	29'10" x 17'7"	464 sq. ft	No
40	Hall	35'0" x 7'7"	230 sq. ft	Yes
41	W.I.C.	5'1" x 5'7"	28 sq. ft	Yes
42	W.I.C.	5'1" x 6'7"	33 sq. ft	Yes
43	Game Room	18'1" x 34'3"	508 sq. ft	Yes
44	W.I.C.	3'11" x 6'6"	26 sq. ft	Yes
45	Office	14'3" x 20'1"	212 sq. ft	Yes

**6475 Glendora Avenue, Preston Hollow, Dallas, Dallas
County, Texas, United States, 75230**

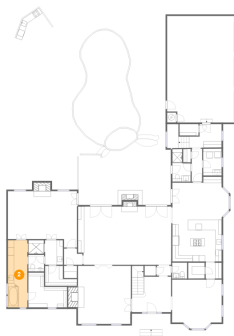
1 Floor 1 - Swimming Pool



Dimensions: 9'4" x 6'8"
Area: 49 sq. ft
Counted as living area: No

Heated: No
Finished: No
Enclosed: No
Contiguous: Yes
Permitted: No
Wet space: No
Addition: No
Conversion: No

2 Floor 1 - Primary Bath

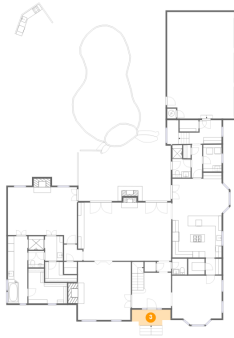


Dimensions: 6'6" x 21'5"
Area: 135 sq. ft
Counted as living area: Yes

Heated: Yes
Finished: Yes
Enclosed: Yes
Contiguous: Yes
Permitted: Yes
Wet space: Yes
Addition: No
Conversion: No

**6475 Glendora Avenue, Preston Hollow, Dallas, Dallas
County, Texas, United States, 75230**

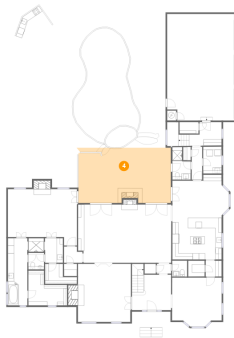
3 Floor 1 - Porch



Dimensions: 12'4" x 5'0"
Area: 55 sq. ft
Counted as living area: No

Heated: No
Finished: Yes
Enclosed: No
Contiguous: Yes
Permitted: Yes
Wet space: No
Addition: No
Conversion: No

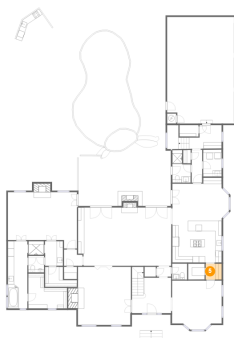
4 Floor 1 - Covered Patio



Dimensions: 8'0" x 17'8"
Area: 512 sq. ft
Counted as living area: No

Heated: No
Finished: Yes
Enclosed: No
Contiguous: Yes
Permitted: Yes
Wet space: No
Addition: No
Conversion: No

5 Floor 1 - Hall

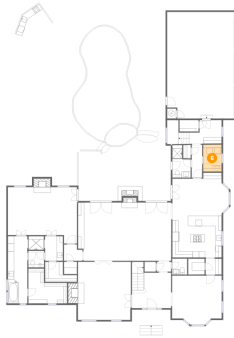


Dimensions: 5'1" x 5'1"
Area: 26 sq. ft
Counted as living area: Yes

Heated: Yes
Finished: Yes
Enclosed: Yes
Contiguous: Yes
Permitted: Yes
Wet space: No
Addition: No
Conversion: No

**6475 Glendora Avenue, Preston Hollow, Dallas, Dallas
County, Texas, United States, 75230**

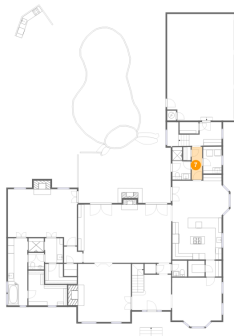
6 Floor 1 - Laundry



Dimensions: 5'10" x 8'7"
Area: 51 sq. ft
Counted as living area: Yes

Heated: Yes
Finished: Yes
Enclosed: Yes
Contiguous: Yes
Permitted: Yes
Wet space: No
Addition: No
Conversion: No

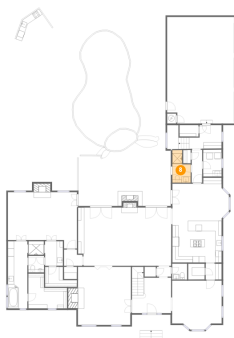
7 Floor 1 - Hall



Dimensions: 3'3" x 10'6"
Area: 35 sq. ft
Counted as living area: Yes

Heated: Yes
Finished: Yes
Enclosed: Yes
Contiguous: Yes
Permitted: Yes
Wet space: No
Addition: No
Conversion: No

8 Floor 1 - Bath

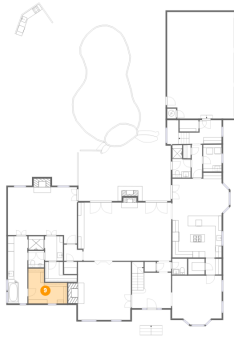


Dimensions: 5'10" x 9'4"
Area: 49 sq. ft
Counted as living area: Yes

Heated: Yes
Finished: Yes
Enclosed: Yes
Contiguous: Yes
Permitted: Yes
Wet space: Yes
Addition: No
Conversion: No

**6475 Glendora Avenue, Preston Hollow, Dallas, Dallas
County, Texas, United States, 75230**

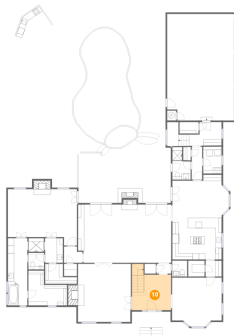
9 Floor 1 - W.I.C.



Dimensions: 12'5" x 11'2"
Area: 104 sq. ft
Counted as living area: Yes

Heated: Yes
Finished: Yes
Enclosed: Yes
Contiguous: Yes
Permitted: Yes
Wet space: No
Addition: No
Conversion: No

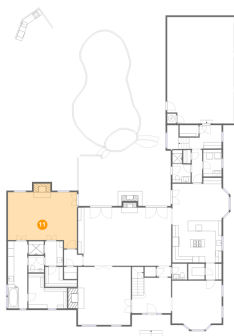
10 Floor 1 - Foyer



Dimensions: 12'6" x 11'4"
Area: 155 sq. ft
Counted as living area: Yes

Heated: Yes
Finished: Yes
Enclosed: Yes
Contiguous: Yes
Permitted: Yes
Wet space: No
Addition: No
Conversion: No

11 Floor 1 - Primary Bedroom

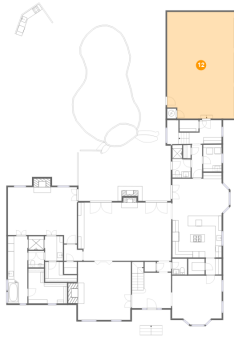


Dimensions: 22'1" x 18'0"
Area: 365 sq. ft
Counted as living area: Yes

Heated: Yes
Finished: Yes
Enclosed: Yes
Contiguous: Yes
Permitted: Yes
Wet space: No
Addition: No
Conversion: No

**6475 Glendora Avenue, Preston Hollow, Dallas, Dallas
County, Texas, United States, 75230**

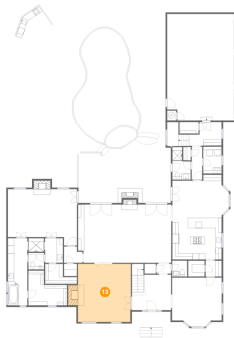
12 Floor 1 - Garage



Dimensions: 21'5" x 34'1"
Area: 720 sq. ft
Counted as living area: No

Heated: No
Finished: No
Enclosed: Yes
Contiguous: Yes
Permitted: Yes
Wet space: No
Addition: No
Conversion: No

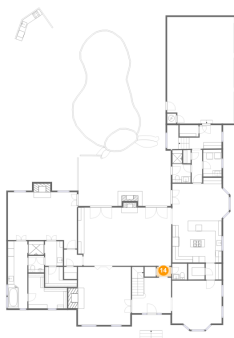
13 Floor 1 - Lounge



Dimensions: 16'11" x 18'7"
Area: 335 sq. ft
Counted as living area: Yes

Heated: Yes
Finished: Yes
Enclosed: Yes
Contiguous: Yes
Permitted: Yes
Wet space: No
Addition: No
Conversion: No

14 Floor 1 - Hall

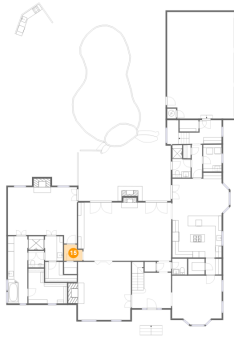


Dimensions: 4'7" x 3'2"
Area: 14 sq. ft
Counted as living area: Yes

Heated: Yes
Finished: Yes
Enclosed: Yes
Contiguous: Yes
Permitted: Yes
Wet space: No
Addition: No
Conversion: No

**6475 Glendora Avenue, Preston Hollow, Dallas, Dallas
County, Texas, United States, 75230**

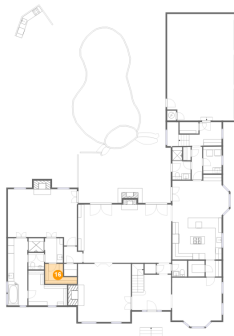
15 Floor 1 - Hall



Dimensions: 5'9" x 5'2"
Area: 28 sq. ft
Counted as living area: Yes

Heated: Yes
Finished: Yes
Enclosed: Yes
Contiguous: Yes
Permitted: Yes
Wet space: No
Addition: No
Conversion: No

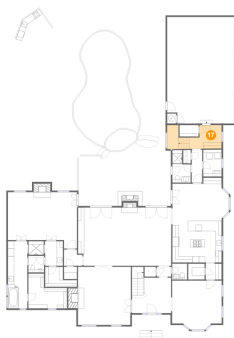
16 Floor 1 - W.I.C.



Dimensions: 10'2" x 6'5"
Area: 46 sq. ft
Counted as living area: Yes

Heated: Yes
Finished: Yes
Enclosed: Yes
Contiguous: Yes
Permitted: Yes
Wet space: No
Addition: No
Conversion: No

17 Floor 1 - Mud Room

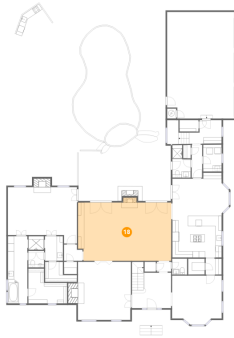


Dimensions: 10'5" x 7'7"
Area: 106 sq. ft
Counted as living area: Yes

Heated: Yes
Finished: Yes
Enclosed: Yes
Contiguous: Yes
Permitted: Yes
Wet space: No
Addition: No
Conversion: No

**6475 Glendora Avenue, Preston Hollow, Dallas, Dallas
County, Texas, United States, 75230**

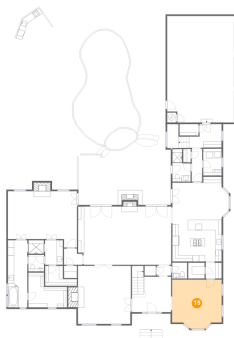
18 Floor 1 - Living Room



Dimensions: 29'10" x 18'7"
Area: 557 sq. ft
Counted as living area: Yes

Heated: Yes
Finished: Yes
Enclosed: Yes
Contiguous: Yes
Permitted: Yes
Wet space: No
Addition: No
Conversion: No

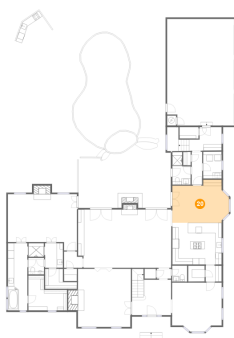
19 Floor 1 - Dining Room



Dimensions: 15'10" x 15'8"
Area: 231 sq. ft
Counted as living area: Yes

Heated: Yes
Finished: Yes
Enclosed: Yes
Contiguous: Yes
Permitted: Yes
Wet space: No
Addition: No
Conversion: No

20 Floor 1 - Breakfast Nook

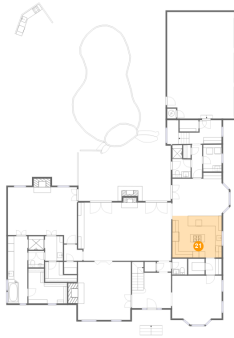


Dimensions: 18'1" x 13'10"
Area: 216 sq. ft
Counted as living area: Yes

Heated: Yes
Finished: Yes
Enclosed: Yes
Contiguous: Yes
Permitted: Yes
Wet space: No
Addition: No
Conversion: No

**6475 Glendora Avenue, Preston Hollow, Dallas, Dallas
County, Texas, United States, 75230**

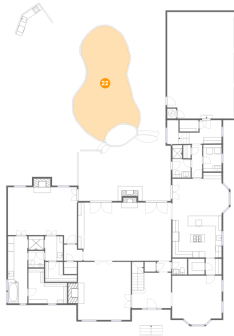
21 Floor 1 - Kitchen



Dimensions: 15'10" x 13'4"
Area: 211 sq. ft
Counted as living area: Yes

Heated: Yes
Finished: Yes
Enclosed: Yes
Contiguous: Yes
Permitted: Yes
Wet space: No
Addition: No
Conversion: No

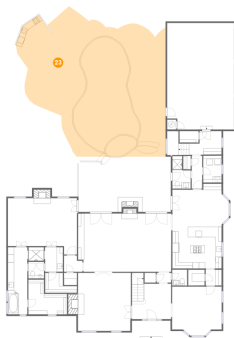
22 Floor 1 - Swimming Pool



Dimensions: 20'11" x 31'7"
Area: 513 sq. ft
Counted as living area: No

Heated: No
Finished: No
Enclosed: No
Contiguous: Yes
Permitted: No
Wet space: No
Addition: No
Conversion: No

23 Floor 1 - Grill Area

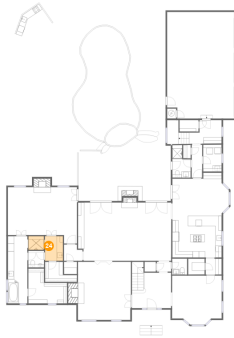


Dimensions: 46'10" x 45'2"
Area: 1756 sq. ft
Counted as living area: No

Heated: No
Finished: Yes
Enclosed: No
Contiguous: Yes
Permitted: Yes
Wet space: No
Addition: No
Conversion: No

**6475 Glendora Avenue, Preston Hollow, Dallas, Dallas
County, Texas, United States, 75230**

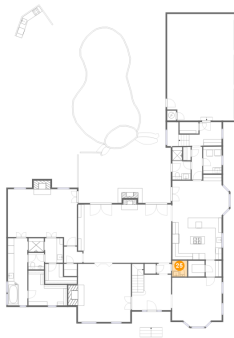
24 Floor 1 - Bath



Dimensions: 11'0" x 7'10"
Area: 68 sq. ft
Counted as living area: Yes

Heated: Yes
Finished: Yes
Enclosed: Yes
Contiguous: Yes
Permitted: Yes
Wet space: Yes
Addition: No
Conversion: No

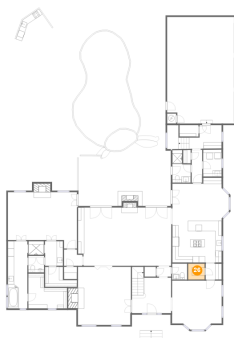
25 Floor 1 - WC



Dimensions: 4'9" x 5'1"
Area: 24 sq. ft
Counted as living area: Yes

Heated: Yes
Finished: Yes
Enclosed: Yes
Contiguous: Yes
Permitted: Yes
Wet space: Yes
Addition: No
Conversion: No

26 Floor 1 - Pantry

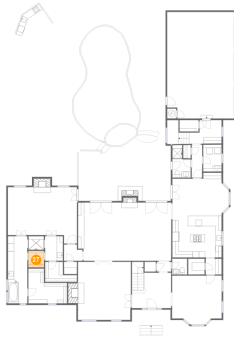


Dimensions: 5'3" x 5'1"
Area: 27 sq. ft
Counted as living area: Yes

Heated: Yes
Finished: Yes
Enclosed: Yes
Contiguous: Yes
Permitted: Yes
Wet space: No
Addition: No
Conversion: No

6475 Glendora Avenue, Preston Hollow, Dallas, Dallas
County, Texas, United States, 75230

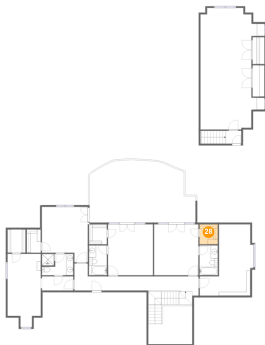
27 Floor 1 - WC



Dimensions: 5'0" x 5'3"
Area: 27 sq. ft
Counted as living area: Yes

Heated: Yes
Finished: Yes
Enclosed: Yes
Contiguous: Yes
Permitted: Yes
Wet space: Yes
Addition: No
Conversion: No

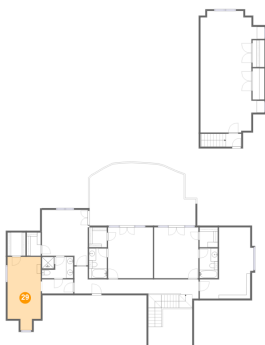
28 Floor 2 - W.I.C.



Dimensions: 5'1" x 5'7"
Area: 29 sq. ft
Counted as living area: Yes

Heated: Yes
Finished: Yes
Enclosed: Yes
Contiguous: Yes
Permitted: Yes
Wet space: No
Addition: No
Conversion: No

29 Floor 2 - Bedroom

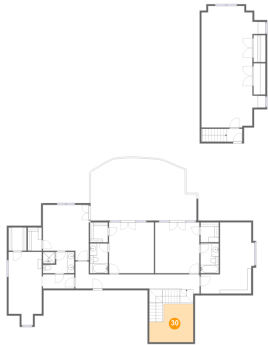


Dimensions: 9'4" x 20'8"
Area: 174 sq. ft
Counted as living area: Yes

Heated: Yes
Finished: Yes
Enclosed: Yes
Contiguous: Yes
Permitted: Yes
Wet space: No
Addition: No
Conversion: No

6475 Glendora Avenue, Preston Hollow, Dallas, Dallas
County, Texas, United States, 75230

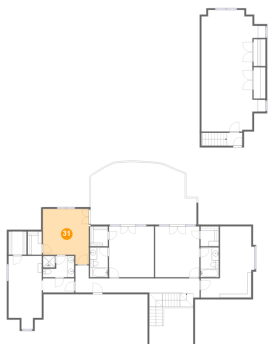
30 Floor 2 - Open To Below



Dimensions: 12'4" x 10'9"
Area: 113 sq. ft
Counted as living area: No

Heated: No
Finished: No
Enclosed: No
Contiguous: Yes
Permitted: No
Wet space: No
Addition: No
Conversion: No

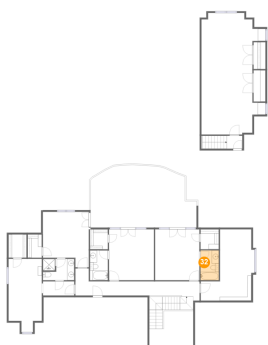
31 Floor 2 - Bedroom



Dimensions: 12'11" x 15'7"
Area: 177 sq. ft
Counted as living area: Yes

Heated: Yes
Finished: Yes
Enclosed: Yes
Contiguous: Yes
Permitted: Yes
Wet space: No
Addition: No
Conversion: No

32 Floor 2 - Bath

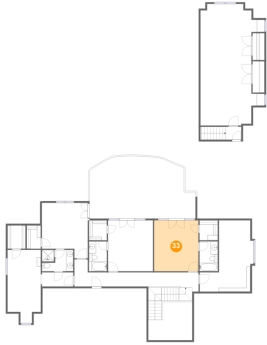


Dimensions: 5'2" x 8'5"
Area: 43 sq. ft
Counted as living area: Yes

Heated: Yes
Finished: Yes
Enclosed: Yes
Contiguous: Yes
Permitted: Yes
Wet space: Yes
Addition: No
Conversion: No

6475 Glendora Avenue, Preston Hollow, Dallas, Dallas
County, Texas, United States, 75230

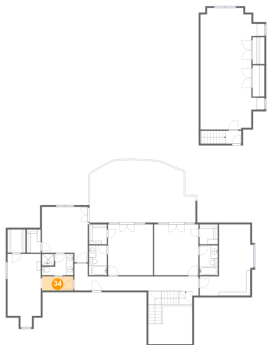
33 Floor 2 - Bedroom



Dimensions: 12'6" x 14'4"
Area: 179 sq. ft
Counted as living area: Yes

Heated: Yes
Finished: Yes
Enclosed: Yes
Contiguous: Yes
Permitted: Yes
Wet space: No
Addition: No
Conversion: No

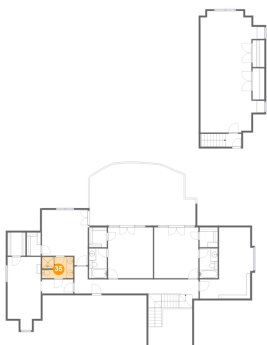
34 Floor 2 - Hall



Dimensions: 8'10" x 4'0"
Area: 35 sq. ft
Counted as living area: Yes

Heated: Yes
Finished: Yes
Enclosed: Yes
Contiguous: Yes
Permitted: Yes
Wet space: No
Addition: No
Conversion: No

35 Floor 2 - Bath

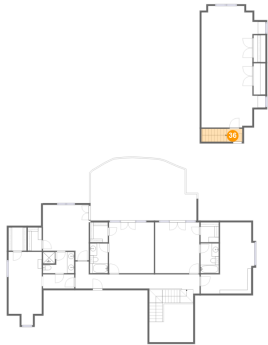


Dimensions: 8'10" x 6'0"
Area: 51 sq. ft
Counted as living area: Yes

Heated: Yes
Finished: Yes
Enclosed: Yes
Contiguous: Yes
Permitted: Yes
Wet space: Yes
Addition: No
Conversion: No

6475 Glendora Avenue, Preston Hollow, Dallas, Dallas
County, Texas, United States, 75230

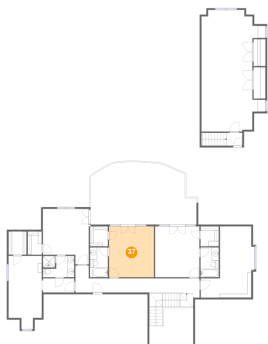
36 Floor 2 - Hall



Dimensions: 11'6" x 3'7"
Area: 42 sq. ft
Counted as living area: Yes

Heated: Yes
Finished: Yes
Enclosed: Yes
Contiguous: Yes
Permitted: Yes
Wet space: No
Addition: No
Conversion: No

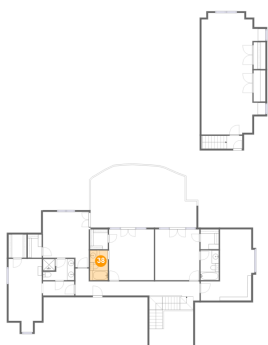
37 Floor 2 - Bedroom



Dimensions: 12'8" x 14'4"
Area: 181 sq. ft
Counted as living area: Yes

Heated: Yes
Finished: Yes
Enclosed: Yes
Contiguous: Yes
Permitted: Yes
Wet space: No
Addition: No
Conversion: No

38 Floor 2 - Bath

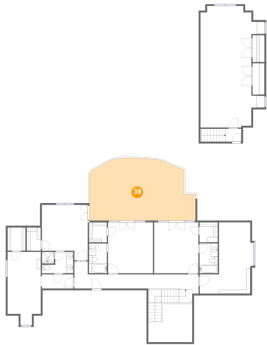


Dimensions: 5'1" x 8'5"
Area: 42 sq. ft
Counted as living area: Yes

Heated: Yes
Finished: Yes
Enclosed: Yes
Contiguous: Yes
Permitted: Yes
Wet space: Yes
Addition: No
Conversion: No

**6475 Glendora Avenue, Preston Hollow, Dallas, Dallas
County, Texas, United States, 75230**

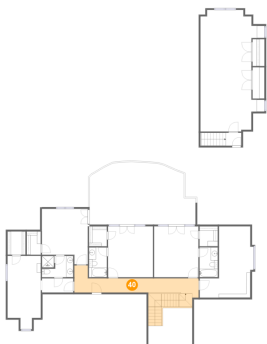
39 Floor 2 - Balcony



Dimensions: 29'10" x 17'7"
Area: 464 sq. ft
Counted as living area: No

Heated: No
Finished: Yes
Enclosed: No
Contiguous: Yes
Permitted: Yes
Wet space: No
Addition: No
Conversion: No

40 Floor 2 - Hall



Dimensions: 35'0" x 7'7"
Area: 230 sq. ft
Counted as living area: Yes

Heated: Yes
Finished: Yes
Enclosed: Yes
Contiguous: Yes
Permitted: Yes
Wet space: No
Addition: No
Conversion: No

41 Floor 2 - W.I.C.

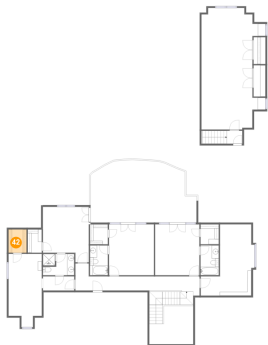


Dimensions: 5'1" x 5'7"
Area: 28 sq. ft
Counted as living area: Yes

Heated: Yes
Finished: Yes
Enclosed: Yes
Contiguous: Yes
Permitted: Yes
Wet space: No
Addition: No
Conversion: No

6475 Glendora Avenue, Preston Hollow, Dallas, Dallas
County, Texas, United States, 75230

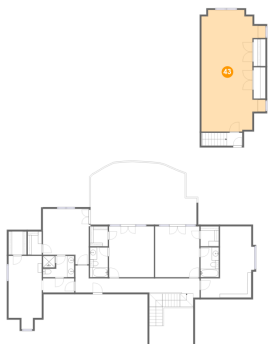
42 Floor 2 - W.I.C.



Dimensions: 5'1" x 6'7"
Area: 33 sq. ft
Counted as living area: Yes

Heated: Yes
Finished: Yes
Enclosed: Yes
Contiguous: Yes
Permitted: Yes
Wet space: No
Addition: No
Conversion: No

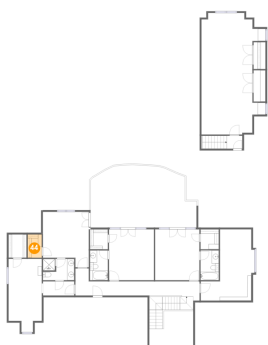
43 Floor 2 - Game Room



Dimensions: 18'1" x 34'3"
Area: 508 sq. ft
Counted as living area: Yes

Heated: Yes
Finished: Yes
Enclosed: Yes
Contiguous: Yes
Permitted: Yes
Wet space: No
Addition: No
Conversion: No

44 Floor 2 - W.I.C.

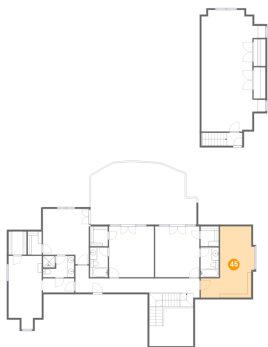


Dimensions: 3'11" x 6'6"
Area: 26 sq. ft
Counted as living area: Yes

Heated: Yes
Finished: Yes
Enclosed: Yes
Contiguous: Yes
Permitted: Yes
Wet space: No
Addition: No
Conversion: No

6475 Glendora Avenue, Preston Hollow, Dallas, Dallas
County, Texas, United States, 75230

45 Floor 2 - Office



Dimensions: 14'3" x 20'1"
Area: 212 sq. ft
Counted as living area: Yes

Heated: Yes
Finished: Yes
Enclosed: Yes
Contiguous: Yes
Permitted: Yes
Wet space: No
Addition: No
Conversion: No